

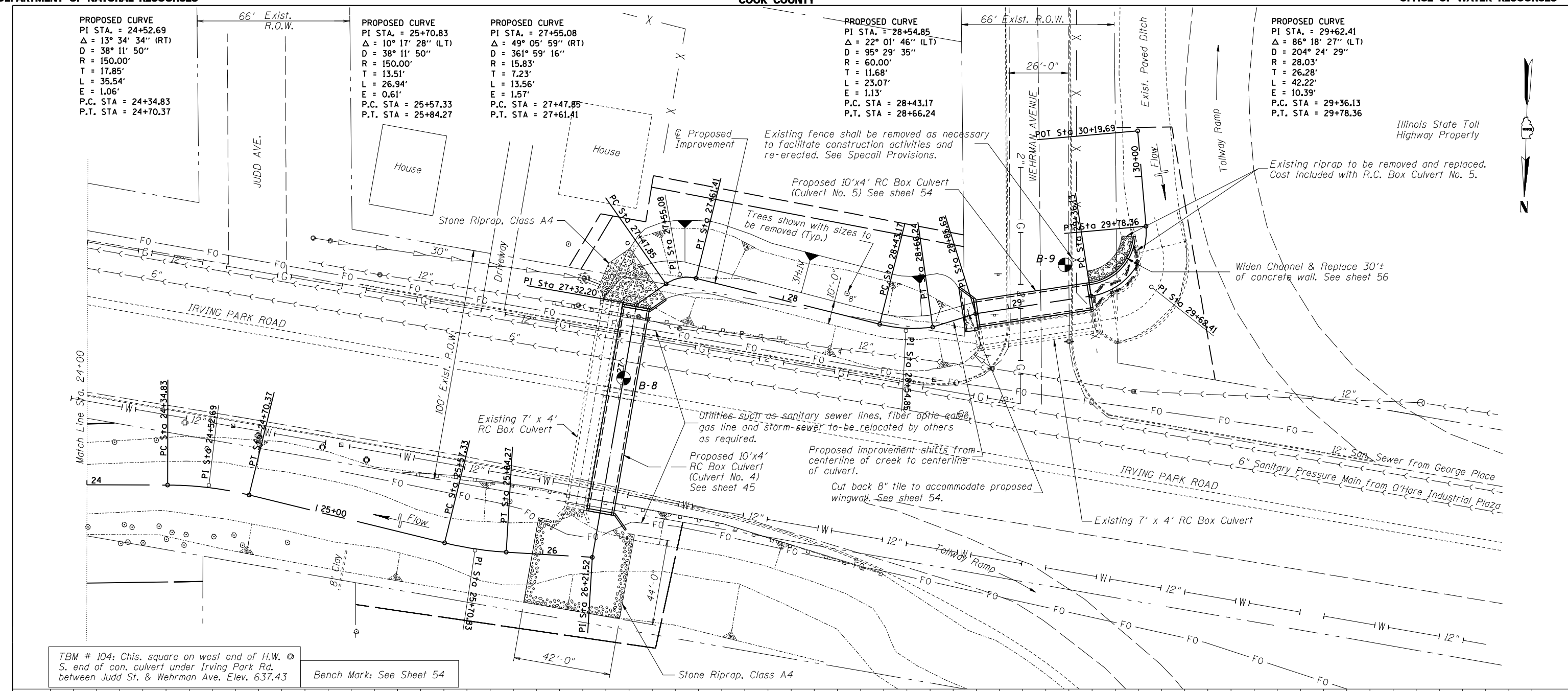
PROPOSED CURVE
PI STA. = 24+52.69
Δ = 13° 34' 34" (RT)
D = 38° 11' 50"
R = 150.00'
T = 17.85'
L = 35.54'
E = 1.06'
P.C. STA = 24+34.83
P.T. STA = 24+70.37

PROPOSED CURVE
PI STA. = 25+70.83
Δ = 10° 17' 28" (LT)
D = 38° 11' 50"
R = 150.00'
T = 13.51'
L = 26.94'
E = 0.61'
P.C. STA = 25+57.33
P.T. STA = 25+84.27

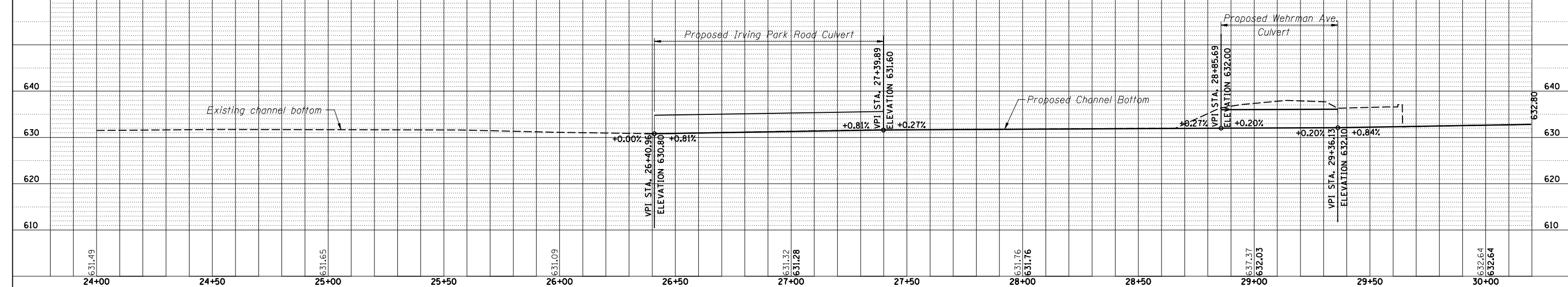
PROPOSED CURVE
PI STA. = 27+55.08
Δ = 49° 05' 59" (RT)
D = 361° 59' 16"
R = 15.83'
T = 7.23'
L = 13.56'
E = 1.57'
P.C. STA = 27+47.85
P.T. STA = 27+61.41

PROPOSED CURVE
PI STA. = 28+54.85
Δ = 22° 01' 46" (LT)
D = 95° 29' 35"
R = 60.00'
T = 11.68'
L = 23.07'
E = 1.13'
P.C. STA = 28+43.17
P.T. STA = 28+66.24

PROPOSED CURVE
PI STA. = 29+62.41
Δ = 86° 18' 27" (LT)
D = 204° 24' 29"
R = 28.03'
T = 26.28'
L = 42.22'
E = 10.39'
P.C. STA = 29+36.13
P.T. STA = 29+78.36



TBM # 104: Chis. square on west end of H.W. S. end of con. culvert under Irving Park Rd. between Judd St. & Wehrman Ave. Elev. 637.43
Bench Mark: See Sheet 54



O:\DwrProj\proj\Projects\Crystal Creek\JF\Plan and profile 5.dgn

11:43:10 AM

1/29/2010

DESIGNED BY: TMM
DRAWN BY: RLP, JJF
CHECKED BY: JJF
CHECKED BY: RLP