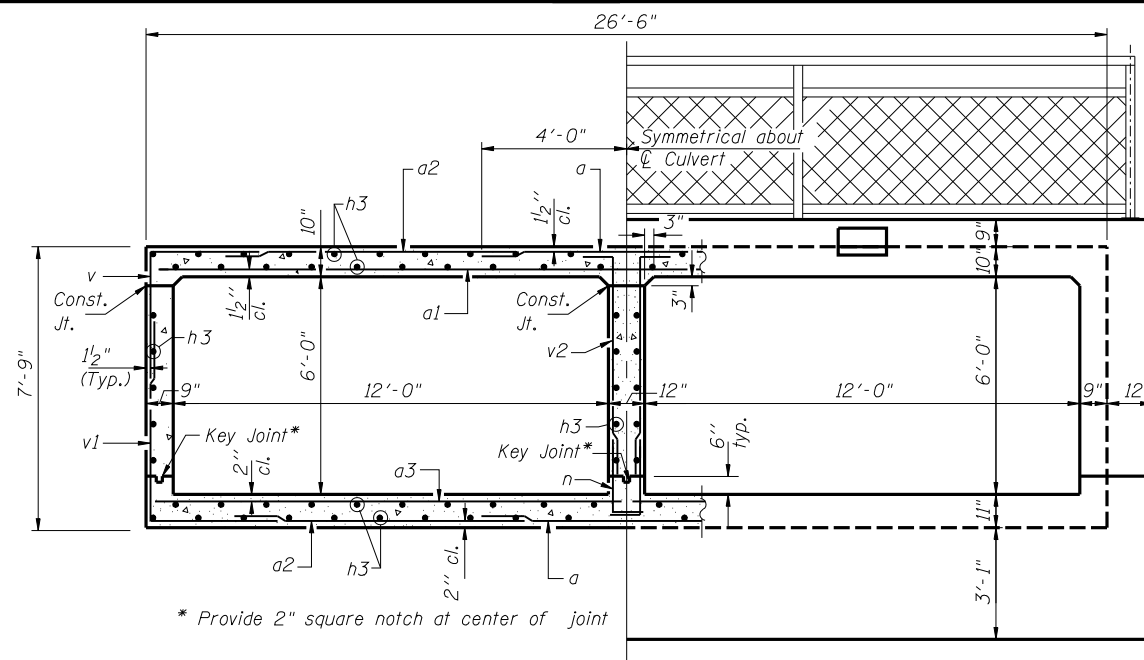


LONG. SECTION

Note: Cut longitudinal and transverse reinforcement bars in top slab as necessary to clear opening by 2".

BAR v, v1, v2, d & n

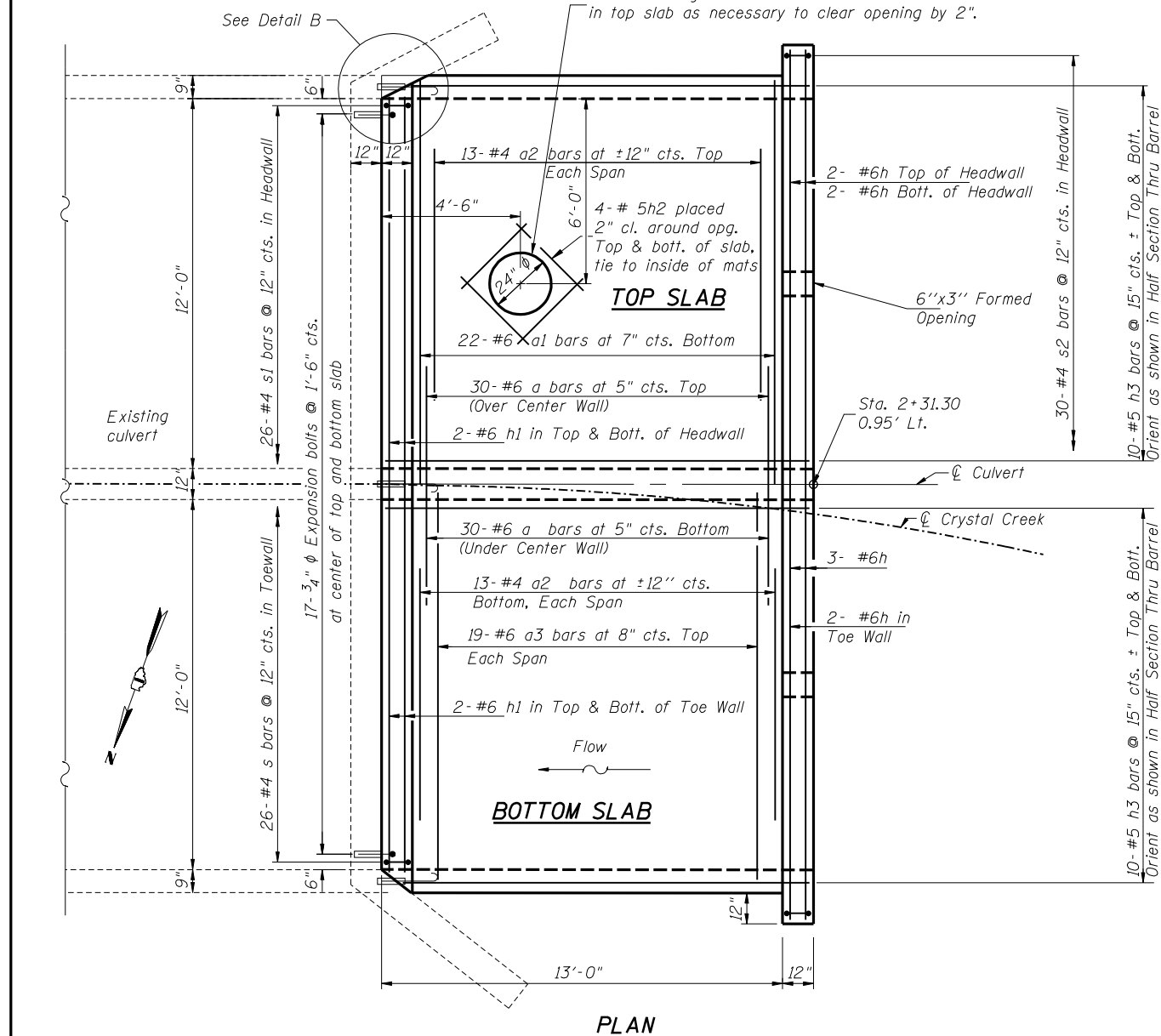
| Bar | A | B |
|-----|-------|-------|
| d | 3'-9" | 1'-9" |
| n | 2'-0" | 10" |
| v | 3'-6" | 3'-0" |
| v1 | 5'-6" | 3'-6" |
| v2 | 6'-0" | 10" |



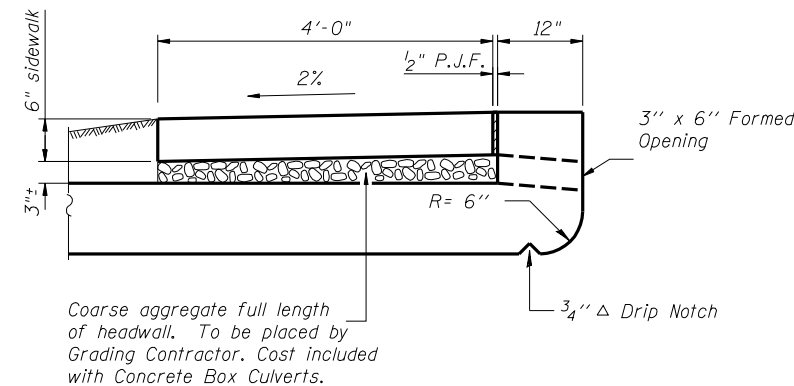
HALF SECTION THRU BARREL

HALF END ELEVATION

* Provide 2" square notch at center of joint

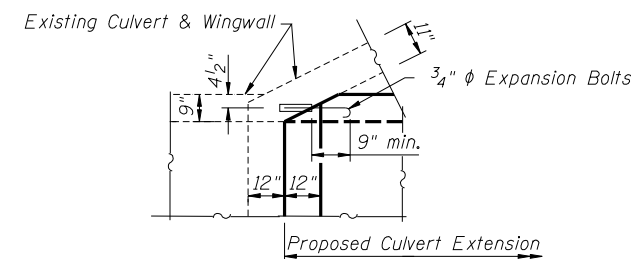


PLAN

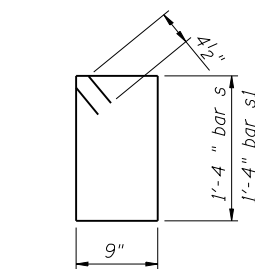


Coarse aggregate full length of headwall. To be placed by Grading Contractor. Cost included with Concrete Box Culverts.

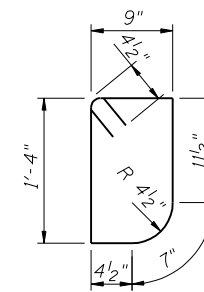
DRAIN DETAIL AT UPSTREAM END



DETAIL B



BARS s & s1



BAR s2

BILL OF MATERIAL

| Bar | No. | Size | Length | Shape |
|-----------------------|-----|------|---------|-------|
| a | 60 | #6 | 8'-0" | — |
| a1 | 22 | #6 | 26'-0" | — |
| a2 | 52 | #4 | 8'-0" | — |
| a3 | 38 | #6 | 13'-0" | — |
| d | 26 | #4 | 5'-6" | └ |
| h | 9 | #6 | 28'-3" | — |
| h1 | 8 | #6 | 25'-2" | — |
| h2 | 8 | #5 | 3'-0" | — |
| h3 | 100 | #5 | 13'-9" | — |
| n | 30 | #5 | 2'-10" | └ |
| s | 26 | #4 | 4'-11" | └ |
| s1 | 26 | #4 | 4'-11" | └ |
| s2 | 30 | #4 | 4'-9" | └ |
| v | 44 | #5 | 6'-6" | └ |
| v1 | 44 | #5 | 9'-0" | └ |
| v2 | 30 | #5 | 6'-10" | └ |
| Concrete Box Culverts | | | Cu. Yd. | 36.2 |
| Reinforcement Bars | | | Pound | 6,120 |
| Expansion Bolts 3/4" | | | Each | 49 |