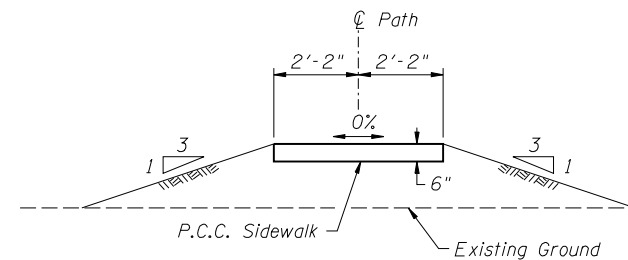
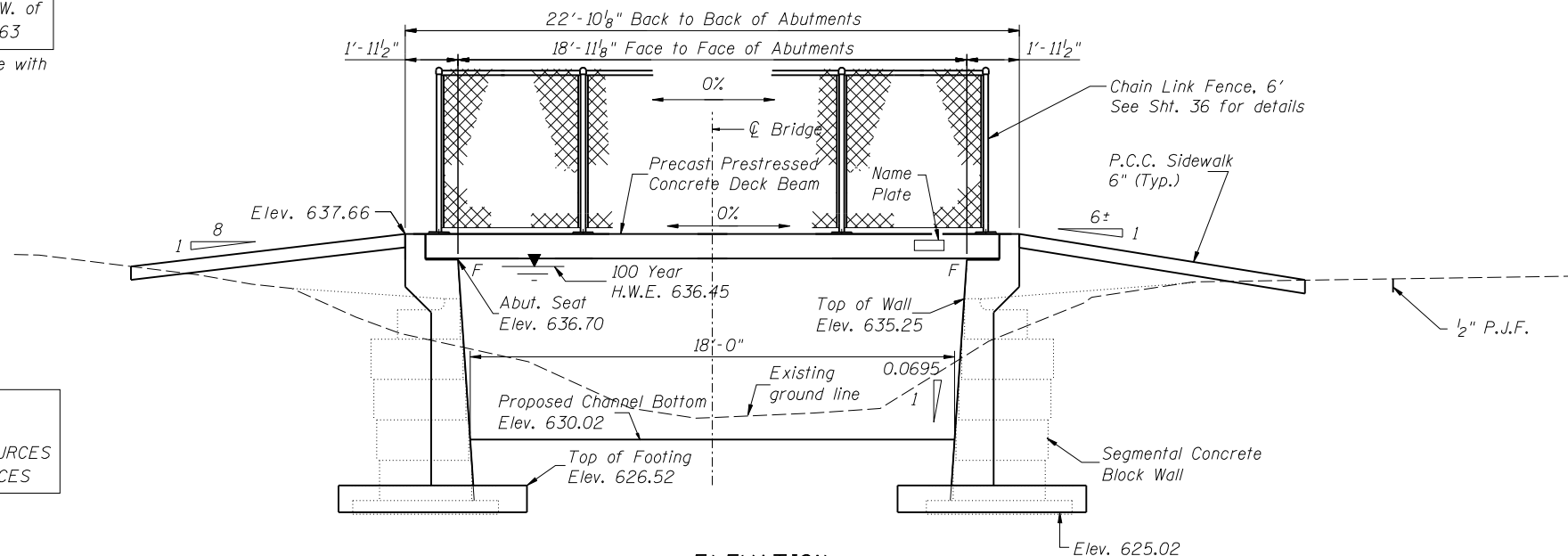


TBM # 105: Chis. square @ of D.S. H.W. of  
culvert under Montrose Ave. Elev. 635.63

Existing Structure: Red brick footbridge with  
concrete deck, 27' length.

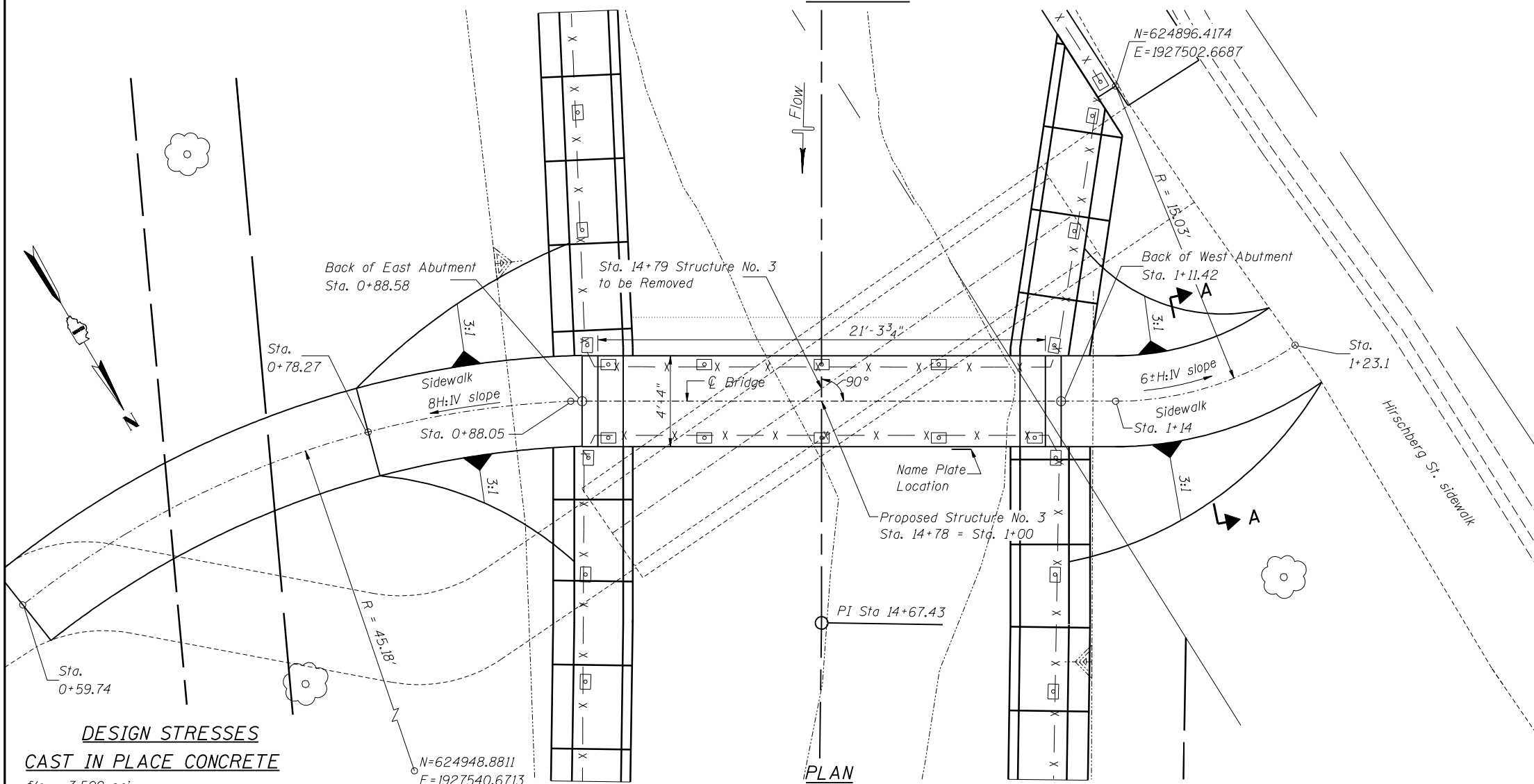
CRYSTAL CREEK  
BUILT 2010 BY  
IL. DEPT. OF NATURAL RESOURCES  
OFFICE OF WATER RESOURCES

**NAME PLATE**  
(See Standard 515001)

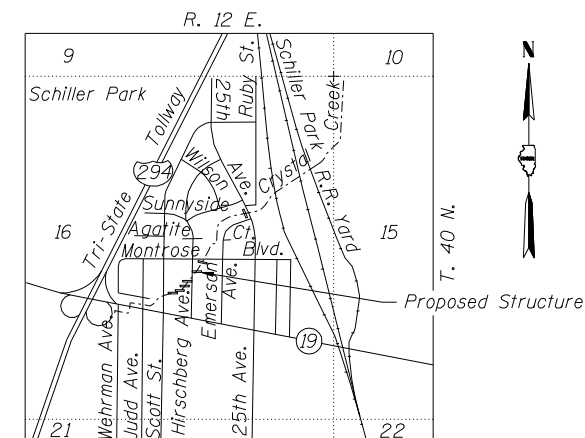


**ELEVATION**

**SECTION A-A**



**PLAN**



**LOCATION SKETCH**

**TOTAL BILL OF MATERIAL**

Item	Unit	Total
Precast Prestressed Concrete Deck Beams (11" depth)	Sq Ft	92
Reinforcement Bars, Epoxy Coated	Pound	1,540
Concrete Structures	Cu Yd	8.6
Stone Face Finish	Sq Ft	90
Chain Link Fence, 6'	Foot	41
Name Plates	Each	1
Portland Cement Concrete Sidewalk 6 Inch	Sq Ft	174

**DESIGN STRESSES**  
**CAST IN PLACE CONCRETE**

$f'_c = 3,500$  psi  
 $f_y = 60,000$  psi (reinforcement)

**PRECAST PRESTRESSED UNITS**

$f'_c = 5,000$  psi  
 $f''_{ci} = 4,000$  psi  
 $f'_s = 270,000$  psi ( $\frac{1}{2}$ "  $\phi$  strand)  
 $f'_{si} = 201,960$  psi ( $\frac{1}{2}$ "  $\phi$  strand)

**DESIGN SPECIFICATIONS**

2002 AASHTO Load Factor Design and  
Guide Specifications for design of  
Pedestrian Bridges Published by  
AASHTO, August 1997

**LOADING**

Pedestrian Live Load = 85 psf

**SEISMIC DATA**

SPC = A  
A = 0.05g  
Site Coefficient (S) = 1.0

Designed By TMM Checked By JUF  
 Drawn By JUF Checked By RLP  
 0:\Dwr\Proj\Imp\Projects\Crystal Creek\JUF\Structure No 3 General Plan and Elevation.dgn  
 1/29/2010 12:04:54 PM