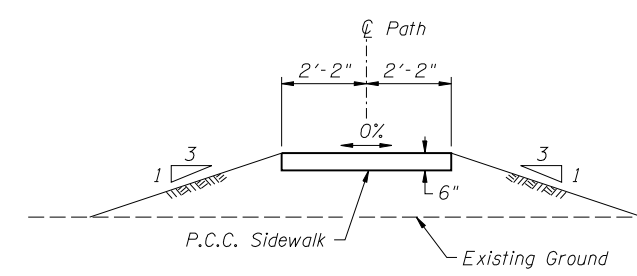
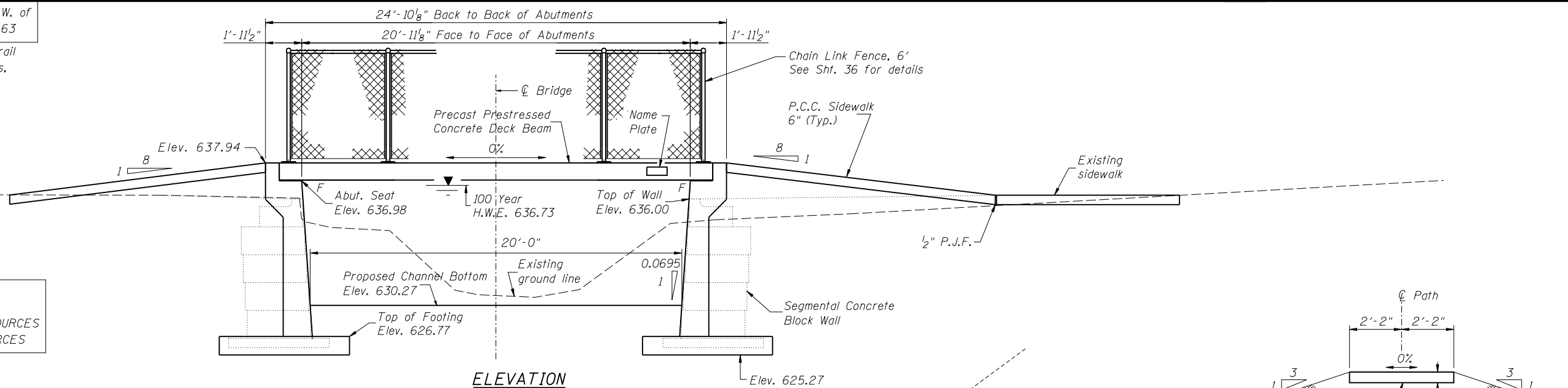


TBM # 105: Chis. square  $\odot$  of D.S. H.W. of  
culvert under Montrose Ave. Elev. 635.63

Existing Structure: Red-stained wood rail  
footbridge with longitudinal deck boards,  
23' length.

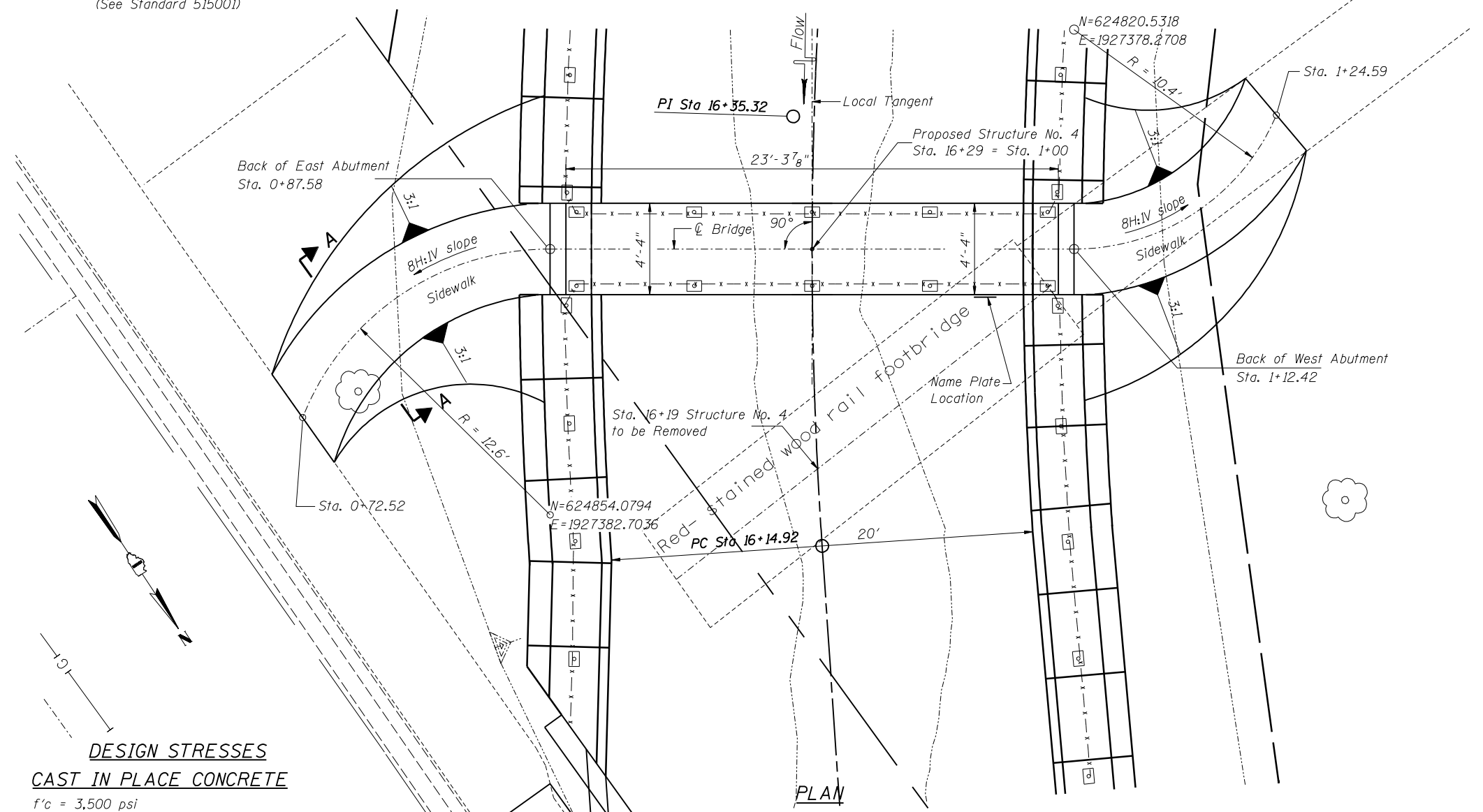
CRYSTAL CREEK  
BUILT 2010 BY  
IL. DEPT. OF NATURAL RESOURCES  
OFFICE OF WATER RESOURCES

**NAME PLATE**  
(See Standard 515001)

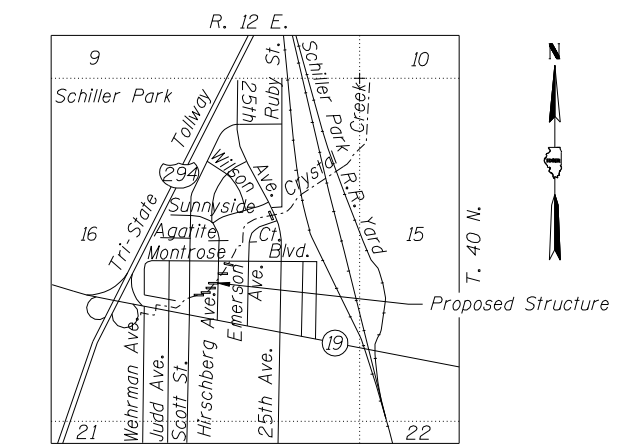


**ELEVATION**

**SECTION A-A**



**PLAN**



**LOCATION SKETCH**

**DESIGN STRESSES**

**CAST IN PLACE CONCRETE**

$f'c = 3,500$  psi  
 $f_y = 60,000$  psi (reinforcement)

**PRECAST PRESTRESSED UNITS**

$f'c = 5,000$  psi  
 $f''ci = 4,000$  psi  
 $f's = 270,000$  psi ( $1/2$ "  $\phi$  strand)  
 $f'si = 201,960$  psi ( $1/2$ "  $\phi$  strand)

**DESIGN SPECIFICATIONS**

2002 AASHTO Load Factor Design and  
Guide Specifications for design of  
Pedestrian Bridges Published by  
AASHTO, August 1997

**LOADING**

Pedestrian Live Load = 85 psf

**SEISMIC DATA**

SPC = A  
A = 0.05g  
Site Coefficient (S) = 1.0

**TOTAL BILL OF MATERIAL**

| Item  | Unit  | Total |
|---|-------|-------|
| Precast Prestressed Concrete Deck Beams (11" depth) | Sq Ft | 101   |
| Reinforcement Bars, Epoxy Coated                    | Pound | 1,540 |
| Concrete Structures                                 | Cu Yd | 8.6   |
| Stone Face Finish                                   | Sq Ft | 90    |
| Chain Link Fence, 6'                                | Foot  | 45    |
| Name Plates   | Each  | 1     |
| Portland Cement Concrete Sidewalk 6 Inch            | Sq Ft | 116   |

Designed By TMM Checked By JUF  
 Drawn By JUF Checked By RLP  
 0:\Dwr\Proj\Imp\Projects\Crystal\_Creek\JUF\Structure No 4 General Plan and Elevation.dgn  
 1/29/2010 12:05:38 PM