

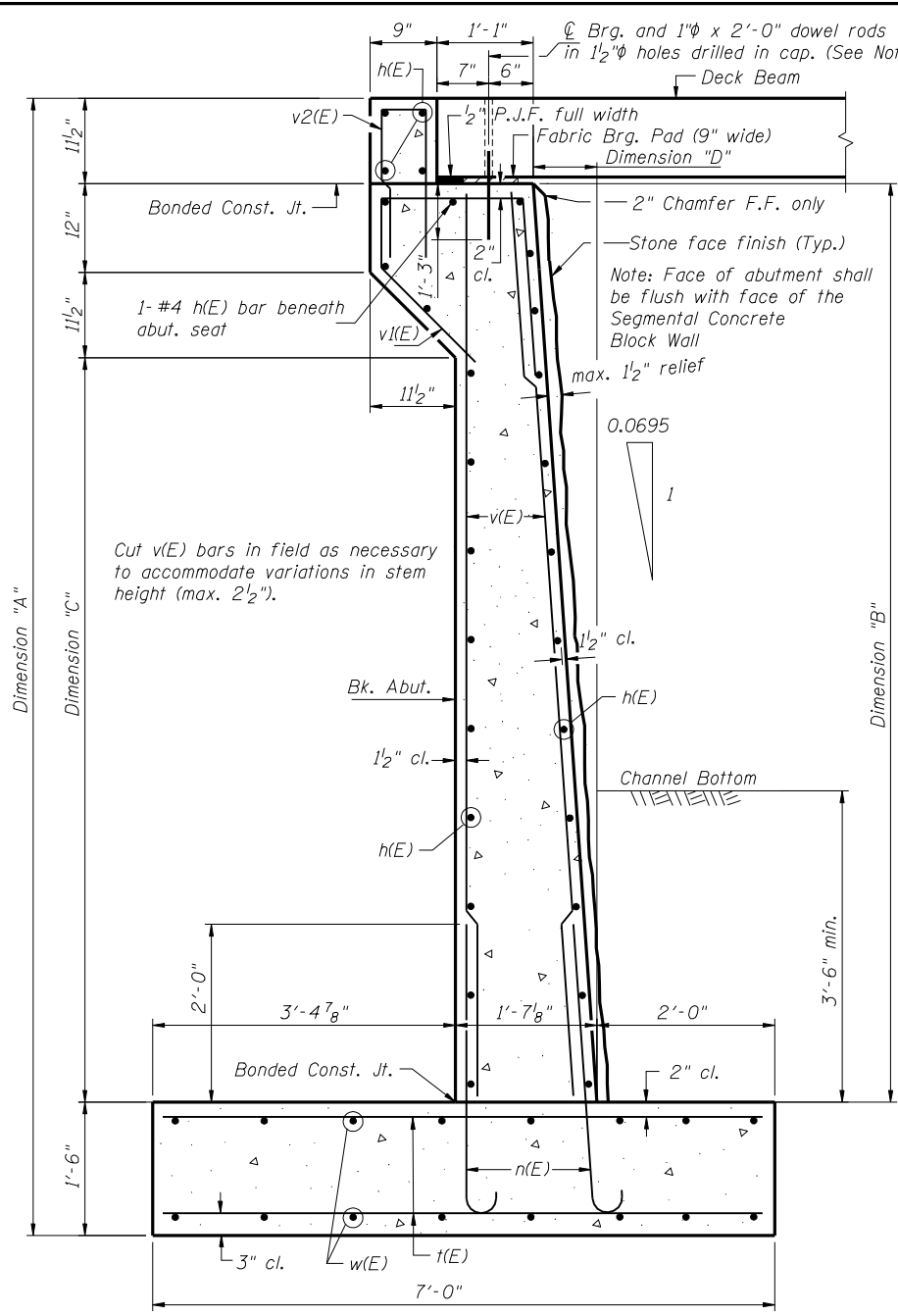
FRONT ELEVATION

2- #4 h(E) bars @ 12" cts. F.F. & B.F.
12- #4 h(E) bars @ 12" cts. F.F. & B.F.

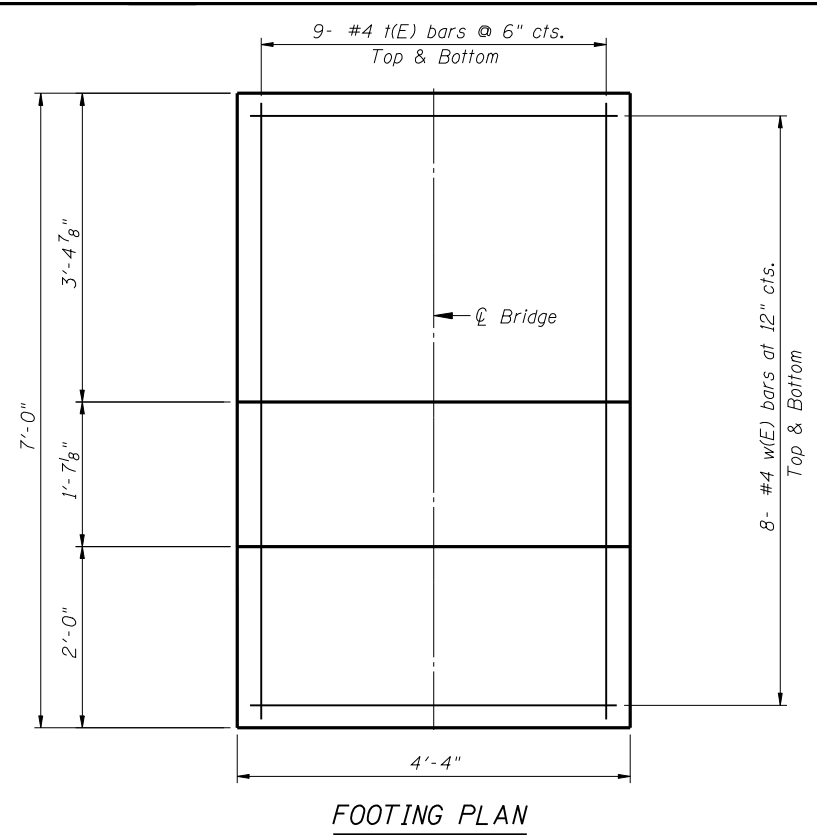
DIMENSION TABLE

| Dimension | "A" | "B" | "C" | "D" |
|--------------|------------|------------|-----------|--------|
| Structure #2 | 12'-9 1/2" | 10'-4" | 8'-4 1/2" | 8 5/8" |
| Structure #3 | 12'-7 5/8" | 10'-2 1/8" | 8'-2 5/8" | 8 1/2" |
| Structure #4 | 12'-8" | 10'-2 1/2" | 8'-3" | 8 1/2" |
| Structure #5 | 12'-7 3/8" | 10'-1 7/8" | 8'-2 3/8" | 8 1/2" |
| Structure #6 | 12'-7" | 10'-1 1/2" | 8'-2" | 8 1/2" |
| Structure #7 | 12'-7" | 10'-1 1/2" | 8'-2" | 8 1/2" |

For specific elevations, refer to the General Plan & Elevation sheets of each structure.



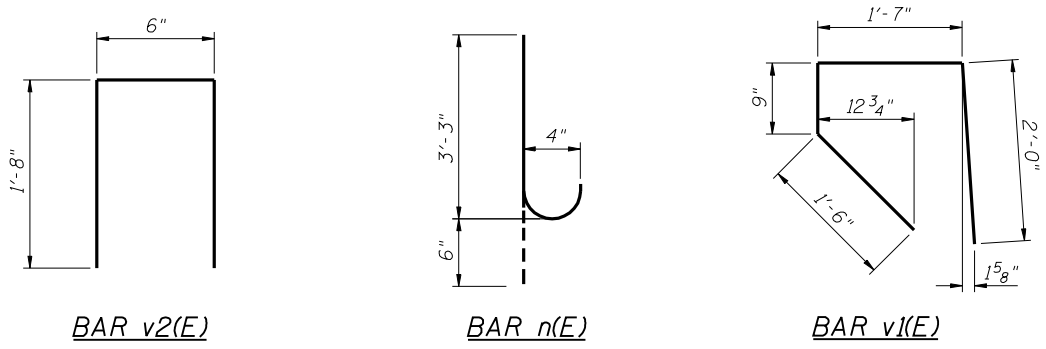
SECTION THRU ABUTMENT



FOOTING PLAN

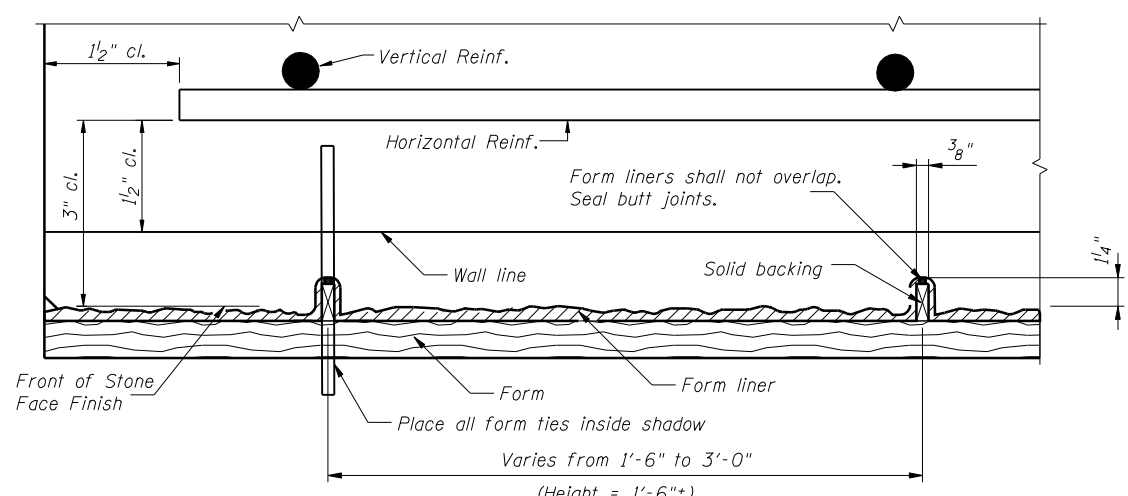
Allowable Soil Bearing Pressure, $Q_{allow} = 2.0 \text{ tsf}$

F.F. = Front Face
B.F. = Back Face



NOTES

- The back wall above the bonded construction joint shall be cast against the in-place beam.
- All edges shall have a 3/4" chamfer unless noted otherwise.
- Reinforcement bars designated (E) shall be epoxy coated.
- Do not backfill behind the abutment until the P.P.C. deck beam has been erected, holes drilled in substructure, anchor dowels placed, and the dowel holes are filled with non-shrink grout to the top of beam and allowed to cure a minimum of 24 hours.
- Cost of 2'-0" long dowel bars included in the cost of "Reinforcement Bars, Epoxy Coated".



SECTION B-B

(With suggested Formwork detail)

BILL OF MATERIAL (2 Abutments)

| Bar | No. | Size | Length | Shape |
|----------------------------------|-----|------|--------|-------|
| h(E) | 58 | #4 | 4'-1" | — |
| n(E) | 36 | #4 | 3'-9" | ┌ |
| t(E) | 36 | #4 | 6'-9" | — |
| v(E) | 36 | #4 | 10'-2" | — |
| v1(E) | 10 | #4 | 5'-10" | ┌ |
| v2(E) | 10 | #4 | 3'-10" | ┌ |
| w(E) | 32 | #4 | 4'-1" | — |
| Concrete Structures | | | Cu Yd | 8.6 |
| Reinforcement Bars, Epoxy Coated | | | Pound | 1,540 |
| Stone Face Finish | | | Sq Ft | 90 |

Designed By: TMM Checked By: JUF
 Drawn By: JUF Checked By: RLP
 0:\DwnProj\Imp\Projects\Crystal Creek\JF\Structures 2 - 7 Abutment Details.dgn
 2/1/2010 2:24:11 PM