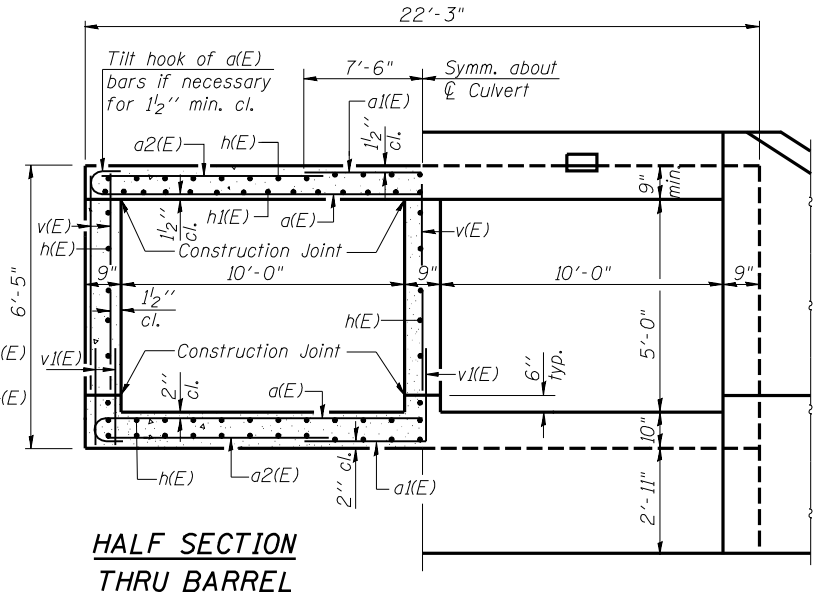
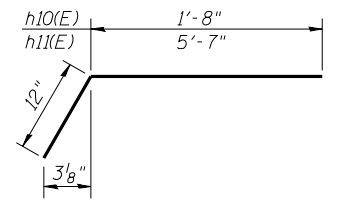


LONGITUDINAL SECTION
Dimensions are at right angles to ϕ Roadway

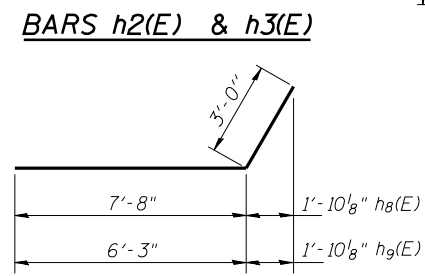


HALF SECTION THRU BARREL
HALF END ELEVATION

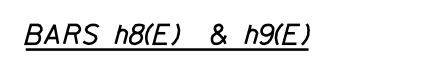
Notes:
A distance of half the length of the wingwall but not less than six feet of the barrel shall be poured monolithically with the wingwalls.



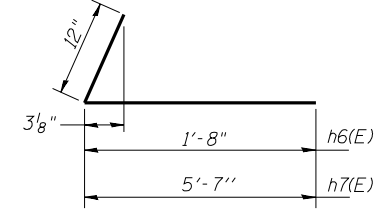
BARS h10(E) & h11(E)



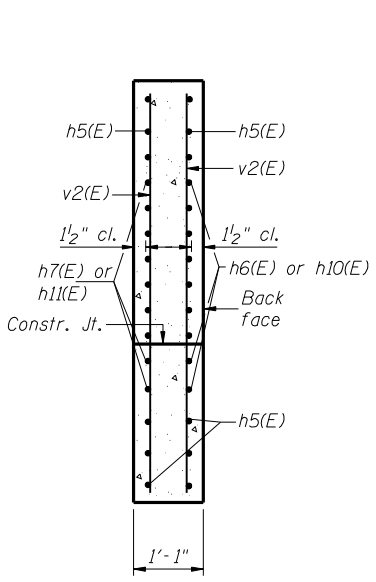
BARS h2(E) & h3(E)



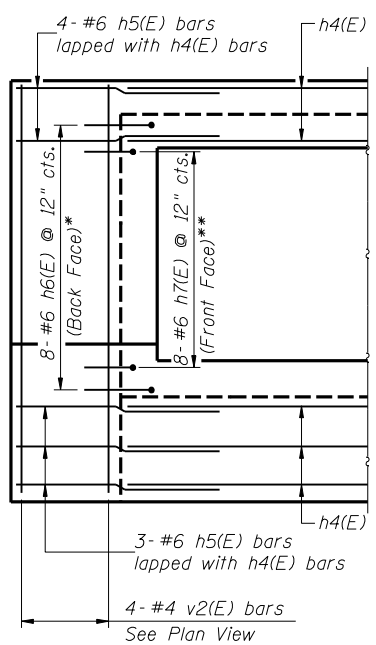
BARS h8(E) & h9(E)



BARS h6(E) & h7(E)

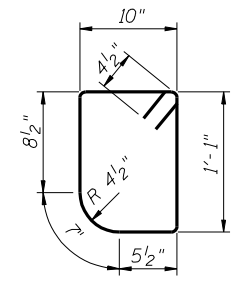


SECTION B-B

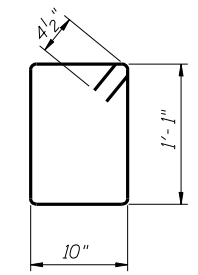


EAST END ELEVATION

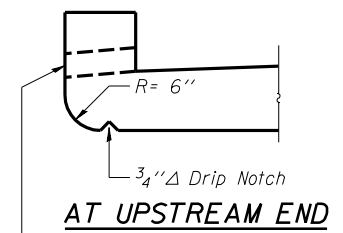
(South Wingwall shown - North Wingwall similar)
* 8-#6 h10(E) @ 12" cts B.F. (North Wingwall)
** 8-#6 h11(E) @ 12" cts F.F. (North Wingwall)



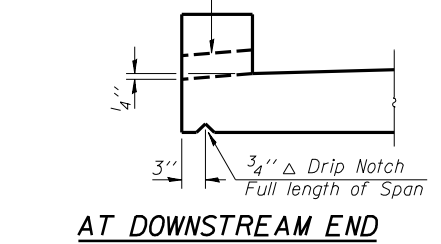
BARS s(E)



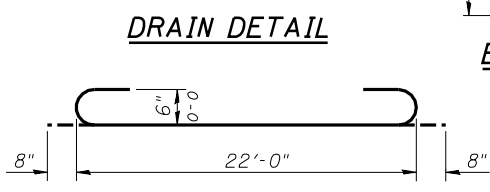
BARS s1(E)



AT UPSTREAM END



AT DOWNSTREAM END

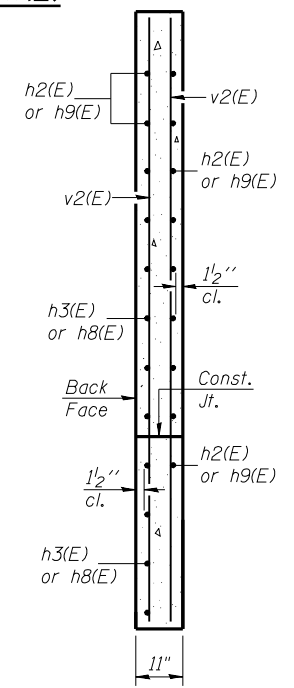


DRAIN DETAIL

BAR a(E)



BAR d(E)



SECTION A-A

BILL OF MATERIAL

Bar	No.	Size	Length	Shape
a(E)	74	#6	23'-4"	U
a1(E)	44	#7	15'-0"	—
a2(E)	60	#4	6'-0"	—
d(E)	46	#4	5'-3"	L
h(E)	87	#4	18'-10"	—
h1(E)	28	#6	18'-10"	—
h2(E)	9	#6	9'-3"	—
h3(E)	9	#6	12'-9"	—
h4(E)	14	#6	22'-8"	—
h5(E)	14	#6	4'-0"	—
h6(E)	8	#6	2'-8"	—
h7(E)	8	#6	6'-7"	—
h8(E)	12	#6	10'-8"	—
h9(E)	6	#6	9'-3"	—
h10(E)	8	#6	2'-8"	—
h11(E)	8	#6	6'-7"	—
s(E)	23	#4	4'-5"	□
s1(E)	23	#4	4'-7"	□
v(E)	72	#5	5'-0"	—
v1(E)	72	#5	2'-4"	—
v2(E)	16	#4	9'-9"	—

Concrete Box Culverts	Cu. Yd.	45.2
Reinforcement Bars, Epoxy Coated	Pound	8,380

Designed By: TMM Checked By: RLP
 Drawn By: JUF Checked By: TMM
 1/29/2010 12:16:01 PM
 O:\Dwr\Proj\p\Projects\Crystal Creek\Culvert No 3 Alley Details III.dgn