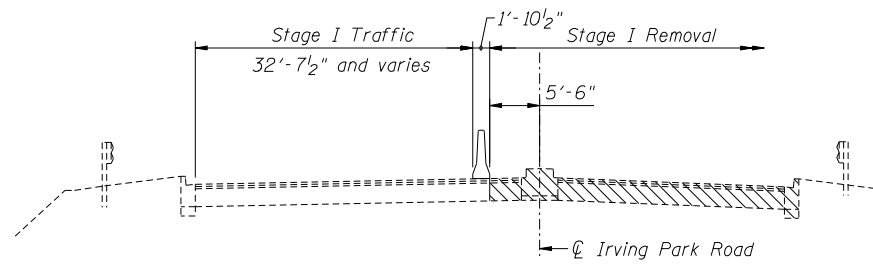


C:\Dwt\Proj\Imp\Projects\Crystal Creek\JUF\Culvert No 4 Stage Construction.dgn

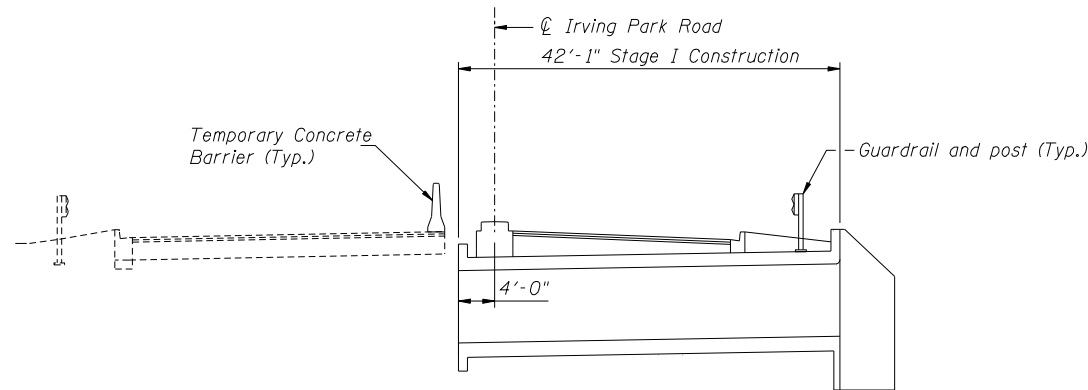
2/15/2010 2:15:54 PM

2/1/2010

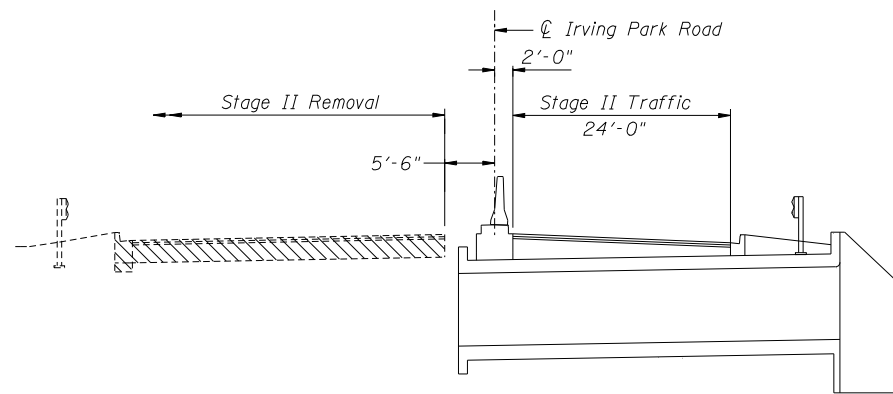
Designed By TMM Checked By RLP  
Drawn By JUF Checked By RLP



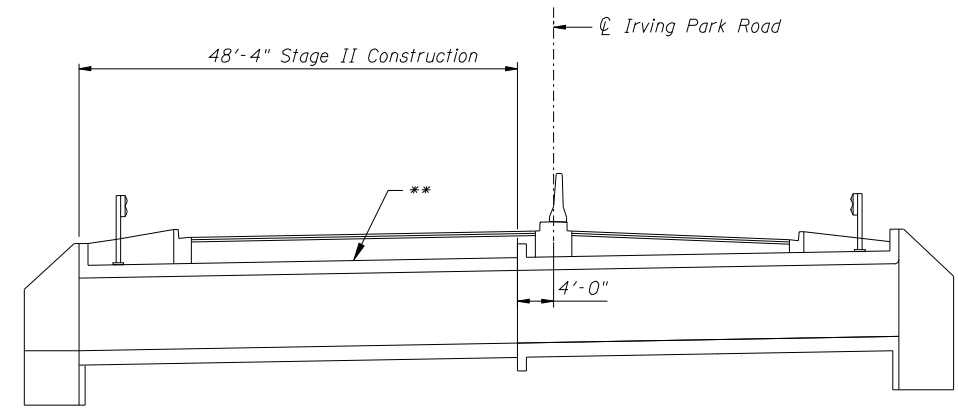
**STAGE I REMOVAL**  
(Looking East)



**STAGE I CONSTRUCTION**  
(Looking East)

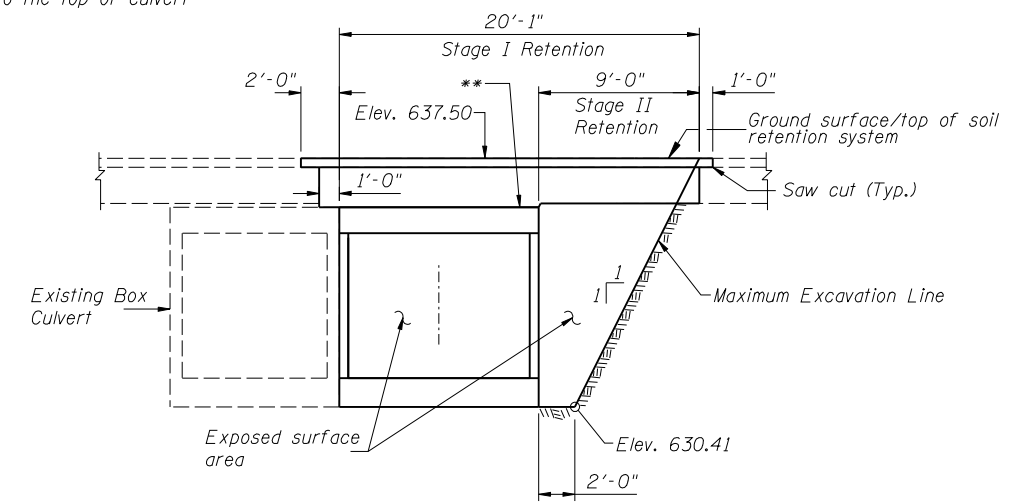


**STAGE II REMOVAL**  
(Looking East)

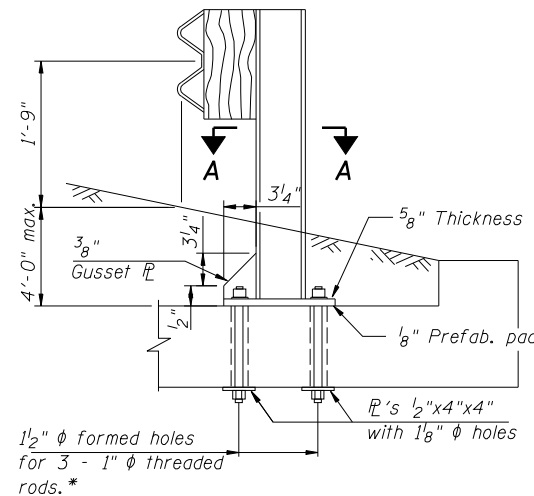


**STAGE II CONSTRUCTION**  
(Looking East)

\*\* In the area over the culvert, use full depth pavement (Binder IL-19 mm) to the top of culvert

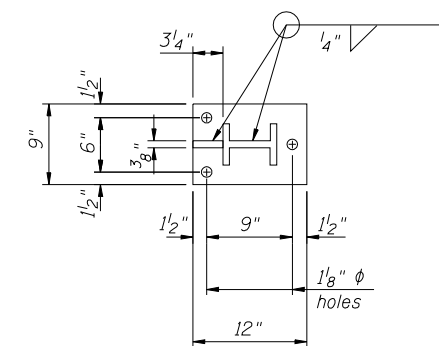


**TEMPORARY SOIL RETENTION SYSTEM (LIMITS)**  
(Looking South)



**GUARDRAIL SLAB CONNECTION DETAIL**

\* All threaded rods shall be installed with heavy hex nuts and standard washers.



**SECTION A-A**

**STAGE CONSTRUCTION**  
IL ROUTE 19 (IRVING PARK ROAD)  
OVER CRYSTAL CREEK  
STA. 118+56.58  
COOK COUNTY  
S.N. 016-1198