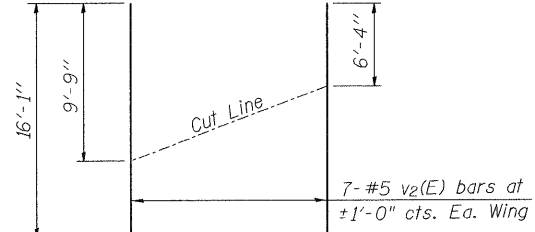
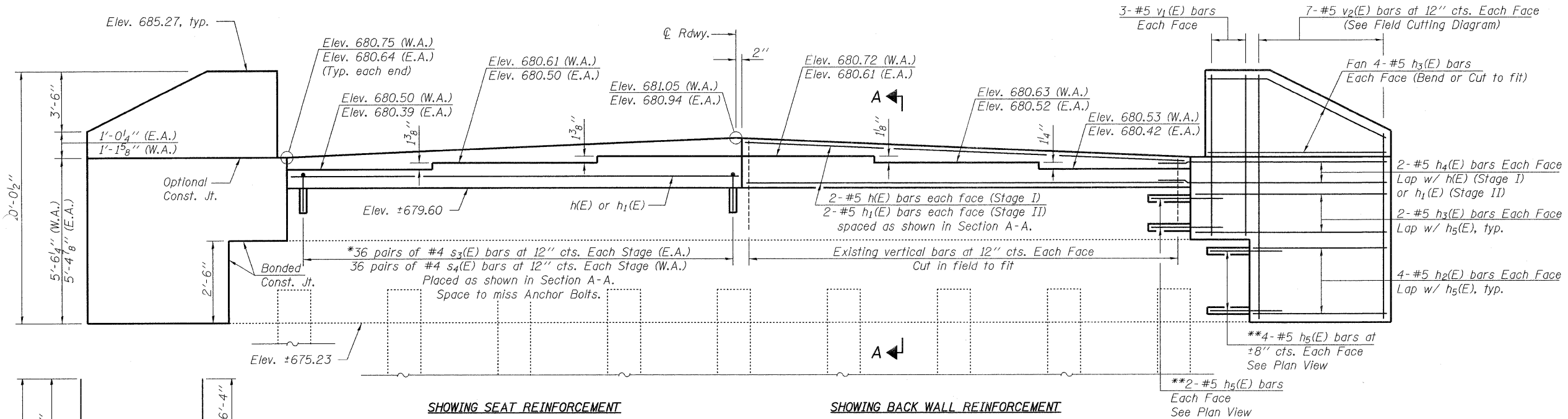


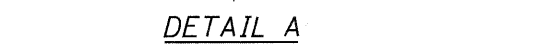
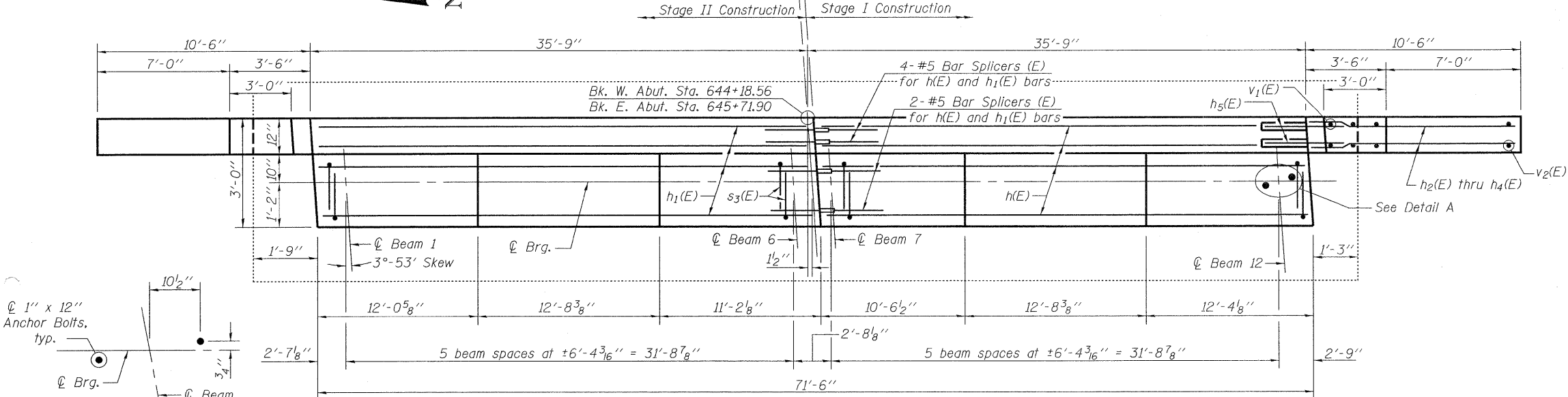
STATE OF ILLINOIS  
DEPARTMENT OF TRANSPORTATION

2 ABUTMENTS  
BILL OF MATERIAL

Bar	No.	Size	Length	Shape
h(E)	12	#5	35'-4"	---
h <sub>1</sub> (E)	12	#5	35'-8"	---
h <sub>2</sub> (E)	32	#5	8'-0"	---
h <sub>3</sub> (E)	48	#5	9'-8"	---
h <sub>4</sub> (E)	16	#5	12'-0"	---
h <sub>5</sub> (E)	48	#5	3'-5"	---
s <sub>3</sub> (E)	144	#4	2'-8"	┘
s <sub>4</sub> (E)	144	#4	2'-10"	┘
v <sub>1</sub> (E)	24	#5	7'-3"	---
v <sub>2</sub> (E)	28	#5	16'-1"	---
Reinforcement Bars, Epoxy Coated		Pound	3,200	
Concrete Structures		Cu. Yd.	29.4	
Bar Splicers		Each	12	



**FIELD CUTTING DIAGRAM**  
Order v<sub>2</sub>(E) bars full length.  
Cut as shown and use remainder of bars in opposite face.



DESIGNED	JMT
CHECKED	BLB
DRAWN	JMT
CHECKED	BLB

6/17/2009 K:\112255\0\Structures\Final Plans\Abutments.dgn

**ELEVATION**  
East Abutment shown, looking east.  
West Abutment similar but opposite hand.

**LEGEND**  
(W.A.) - West Abutment  
(E.A.) - East Abutment

**SHOWING SEAT REINFORCEMENT**

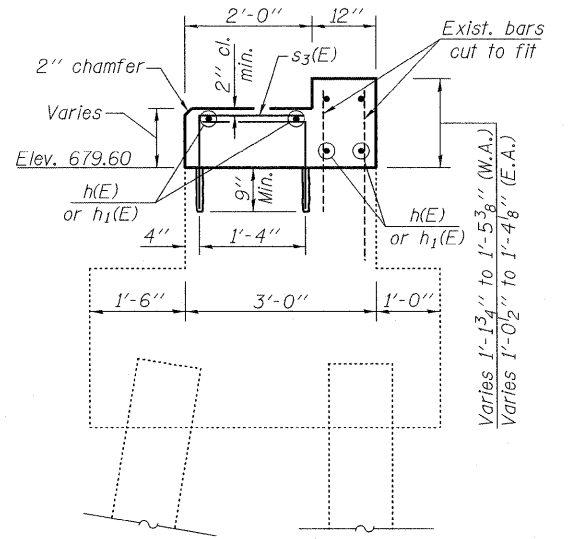
**SHOWING BACK WALL REINFORCEMENT**

**NOTES**

\* Epoxy grout #4 s<sub>3</sub>(E) bars into 3/4" φ x 9" drilled holes located as shown in Section A-A. See Section 584 of the Std. Specifications.

\*\* Epoxy grout #5 h<sub>5</sub>(E) bars into 7/8" φ x 9" drilled holes. Center of the hole shall be drilled a minimum of 4" from the face of the existing structure. See Section 584 of the Std. Specifications.

**BAR s<sub>3</sub>(E) and s<sub>4</sub>(E)**



**SECTION A-A**

**ABUTMENT DETAILS - II  
STRUCTURE NO. 022-0033**

**PLAN**  
East Abutment shown.  
West Abutment similar but opposite hand.

**NOTES**

All construction joints between new and existing concrete shall be Bonded Construction Joints.

Existing reinforcement shall be cleaned and incorporated into the new construction. Cost included with Concrete Removal.

<b>rjngroup</b> Excellence through Ownership 200 West Front Street Wheaton, IL 60187	SHEET NO. 23	F.A.P. RTE. 311	SECTION 10HB-R	COUNTY Du Page	TOTAL SHEETS 53	SHEET NO. 39
	27 SHEETS	CONTRACT NO. 60B92				
FED. ROAD DIST. NO. - ILLINOIS FED. AID PROJECT						