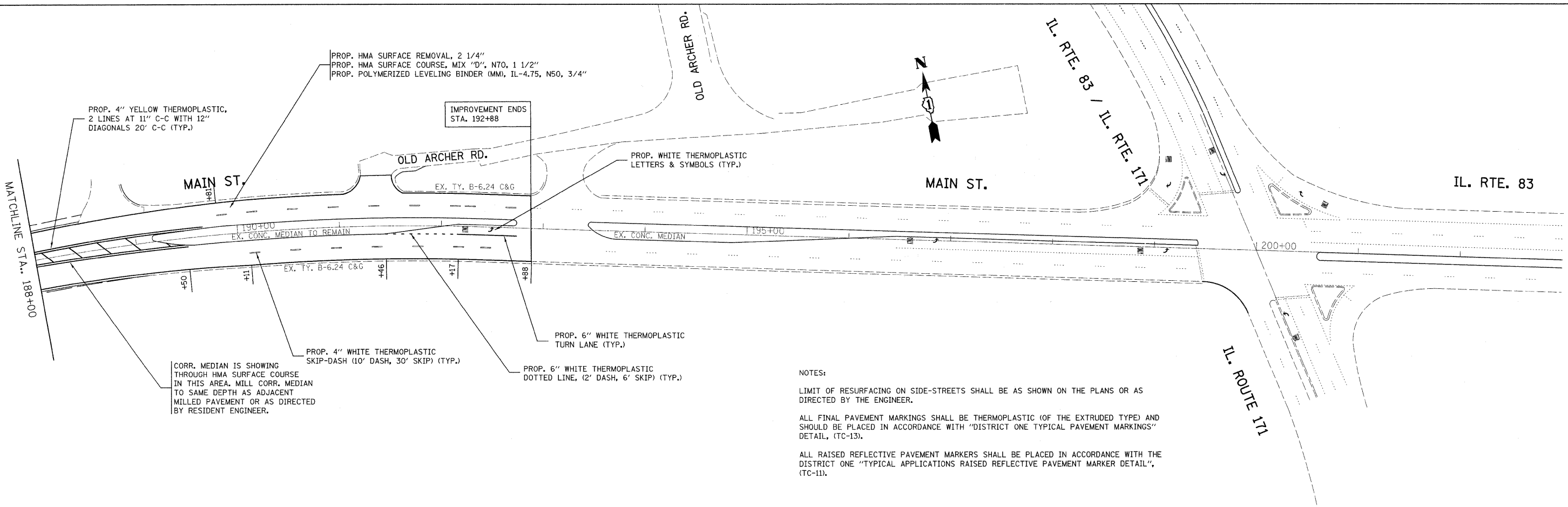


NOTES:

LIMIT OF RESURFACING ON SIDE-STREETS SHALL BE AS SHOWN ON THE PLANS OR AS DIRECTED BY THE ENGINEER.

ALL FINAL PAVEMENT MARKINGS SHALL BE THERMOPLASTIC (OF THE EXTRUDED TYPE) AND SHOULD BE PLACED IN ACCORDANCE WITH "DISTRICT ONE TYPICAL PAVEMENT MARKINGS" DETAIL, (TC-13).

ALL RAISED REFLECTIVE PAVEMENT MARKERS SHALL BE PLACED IN ACCORDANCE WITH THE DISTRICT ONE "TYPICAL APPLICATIONS RAISED REFLECTIVE PAVEMENT MARKER DETAIL", (TC-11).



NOTES:

LIMIT OF RESURFACING ON SIDE-STREETS SHALL BE AS SHOWN ON THE PLANS OR AS DIRECTED BY THE ENGINEER.

ALL FINAL PAVEMENT MARKINGS SHALL BE THERMOPLASTIC (OF THE EXTRUDED TYPE) AND SHOULD BE PLACED IN ACCORDANCE WITH "DISTRICT ONE TYPICAL PAVEMENT MARKINGS" DETAIL, (TC-13).

ALL RAISED REFLECTIVE PAVEMENT MARKERS SHALL BE PLACED IN ACCORDANCE WITH THE DISTRICT ONE "TYPICAL APPLICATIONS RAISED REFLECTIVE PAVEMENT MARKER DETAIL", (TC-11).

FILE NAME =	USER NAME = kellers	DESIGNED -	REVISED -	STATE OF ILLINOIS DEPARTMENT OF TRANSPORTATION	MAIN ST. (ILLINOIS ST. TO IL ROUTE 83) EXISTING AND PROPOSED ROADWAY PLAN	F.A.J. RTE.	SECTION	COUNTY	TOTAL SHEETS	SHEET NO.
ct:\pwwork\pwwid\kellers\d0146128\0183409-aht-plan.dgn	PLOT SCALE = 50,0000' / IN.	DRAWN -	REVISED -			3587	C-RS-7	S.W. COOK	22	11
PLOT DATE = 12/15/2009	DATE -	CHECKED -	REVISED -			SCALE: SHEET NO. OF SHEETS STA. TO STA.		CONTRACT NO. 60H94		
						ILLINOIS FED. AID PROJECT				