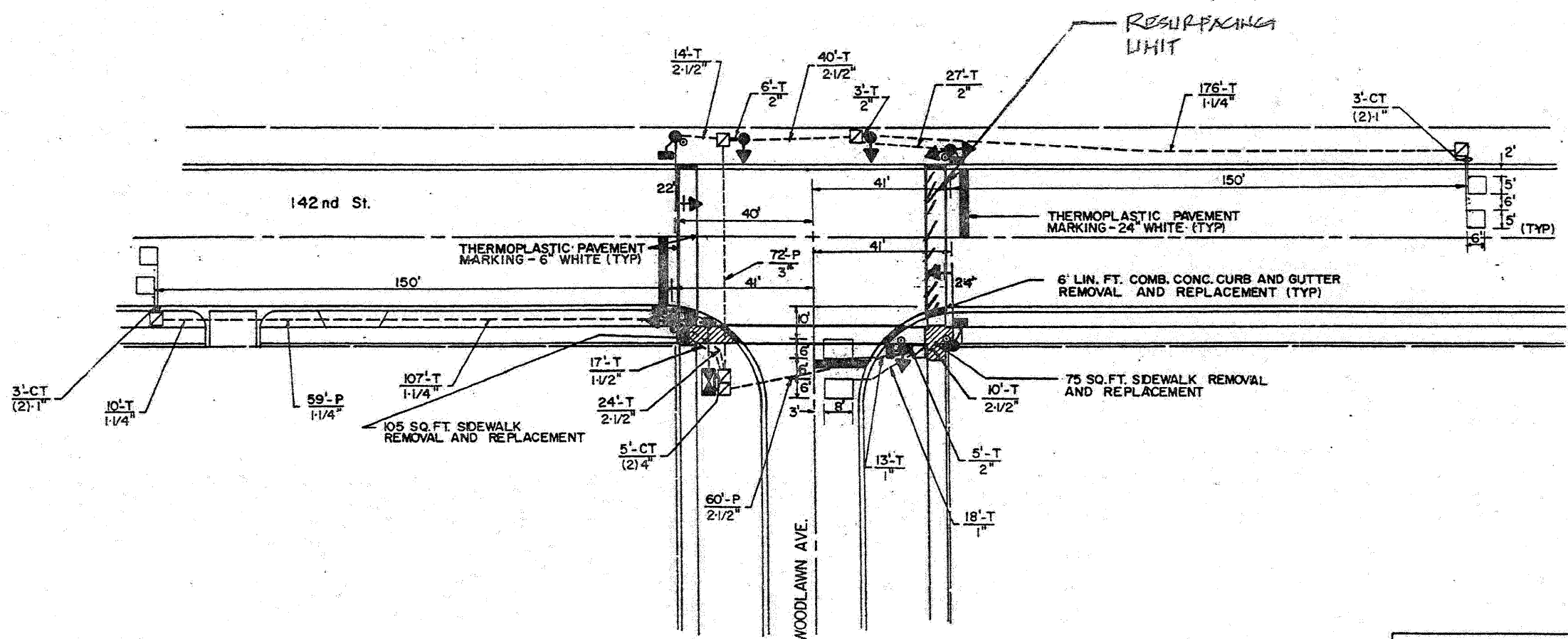
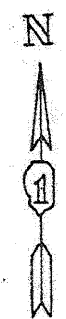


**TRAFFIC SIGNAL LEGEND**

	PROPOSED	EXISTING
DETECTOR LOOP		
SIGNAL HEAD		
G.S. CONDUIT IN TRENCH OR PUSHED		
SIGNAL HEAD WITH BACKPLATE		
RACEWAY FOR MAGNETIC DETECTOR, TYPE I OR II		
VEHICLE DETECTOR, NON-COMPENSATED MAGNETIC TYPE		



THIS PLAN IS FOR THE SOLE PURPOSE OF DETECTOR LOOP REPLACEMENTS ONLY

REPLACE ALL DETECTOR LOOPS AS SHOWN (WITHIN THE RESURFACING LIMITS)

CODE	QUANTITY	UNIT	ITEM
86600600	66	FOOT	DETECTOR LOOP, REPLACEMENT

FILE NAME =	USER NAME = kenthaphixeybc	DESIGNED - BCK	REVISED -
c:\pwork\p\1007\KANTHAPHIXAYBC\01126	4\trff\trff\legend.v7.dgn	DRAWN - BCK	REVISED -
	PLOT SCALE = 3/4" = 1' IN.	CHECKED - DAD	REVISED -
	PLOT DATE = 4/3/2009	DATE	REVISED -

**STATE OF ILLINOIS  
DEPARTMENT OF TRANSPORTATION**

**DISTRICT ONE - DETECTOR LOOP REPLACEMENT**  
142ND STREET - WOODLAWN AVENUE

F.A.I. RTE.	SECTION	COUNTY	TOTAL SHEETS	SHEET NO.
3396	D307 RS-5	COOK	18	7
FED. ROAD DIST. NO.		ILLINOIS FED. AID PROJECT		

SCALE: NONE SHEET NO. OF SHEETS STA. TO STA.