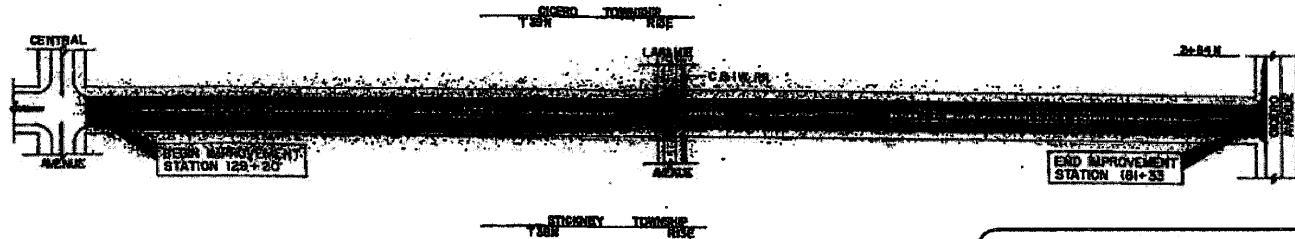
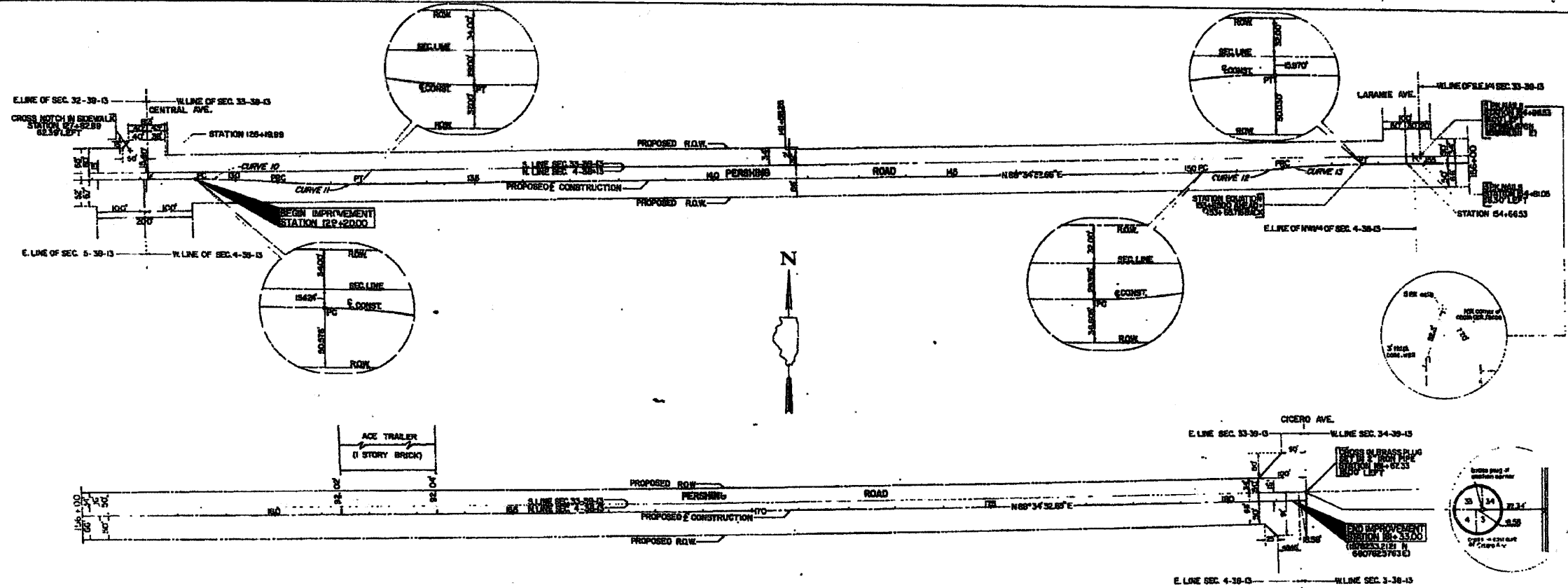


NO.	DATE	BY	CHKD.	APP'D.
58	0811-R	COOK	58	5
129+20.00		129+33.00		
BY: [Signature]				



INFORMATION ONLY

GENERAL PLAN OF IMPROVEMENT
1" = 300'



— CURVE 10 —

PC STATION	129+20.00 (6780356402N, 65525086E)
PT STATION	130+90.179 (8179188780N, 62572304E)
Δ	4° 32' 32"
D	2' 40.20'
R	244.116'
T	85.134'
L	170.179'

— CURVE 11 —

PC STATION	130+90.179
PT STATION	132+60.358 (876088.5882N, 628284.4184E)
Δ	4° 32' 32"
D	2' 40.20'
R	244.116'
T	85.134'
L	170.179'

— CURVE 12 —

PC STATION	150+25.000 (872842.4638N, 67655874E)
PT STATION	151+95.537 (876183.4362N, 676286338E)
Δ	4° 32' 32"
D	2' 40.20'
R	244.116'
T	85.134'
L	170.179'

— CURVE 13 —

PC STATION	151+95.537
PT STATION	153+65.716 (876184.4184N, 657885.4336E)
Δ	4° 32' 32"
D	2' 40.20'
R	244.116'
T	85.134'
L	170.179'

RIGHT OF WAY AND ALIGNMENT
1" = 100'

STATE OF ILLINOIS DEPARTMENT OF TRANSPORTATION
**PERSHING ROAD
 GENERAL PLAN
 OF IMPROVEMENT
 AND
 RIGHT OF WAY,
 ALIGNMENT**
 SCALE: AS SHOWN
 DATE: _____
 DRAWN BY: LK BRM
 CHECKED BY: WGN