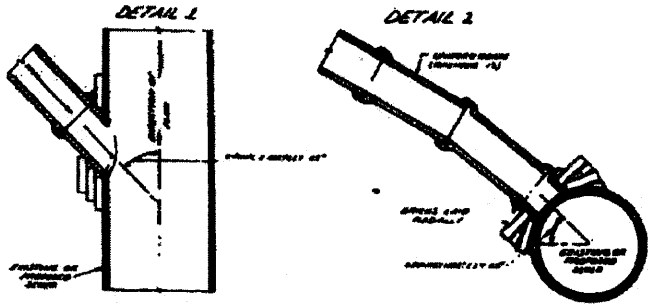




Note: For Pipe Data see sht. # 23.



DESCRIPTION.
 All pipe, manholes and inlet connections shall be made in accordance with the following specifications:
 (a) CONNECTION TO EXISTING STORM SEWER. Where a storm sewer connection is to be connected to an existing storm sewer, the branch section or a section with an opening made in the pipe at the time it is being started, of the proper diameter shall be installed in the storm sewer at the location providing the type of pipe used is manufacturer with "T" branches or with openings made in the pipe.
 The location of the proposed storm sewer connection with the proposed storm sewer shall be constructed as follows:
 (1) Similar to Detail 1 and Detail 2 above except no pipe will be required if sections with "T" branches or "T" pipe are used.
 (b) CONNECTION TO EXISTING STORM SEWER. Where a storm sewer connection is to be connected to an existing sewer a circular opening shall be made in the existing sewer at the same size as the internal diameter of the proposed storm sewer connection.
 If the existing sewer pipe is cracked, broken or otherwise injured by the contractor in making this circular opening, the contractor shall replace this section of pipe with a pipe equal and similar in all other respects to the pipe in the existing sewer in a careful workmanlike manner without delay.
 The hole between the existing sewer and the proposed sewer shall be completely sealed with brick or stone masonry. Brick, grade of concrete building brick, Grade 2 shall be laid in mortar the same as specified for

DETAILS.
 Brick masonry under Article 612.05 of the Standard Specifications.
 (c) MANHOLE. Manholes shall be built to prevent gas, sand, or other obnoxious matter from entering the sewer. All manholes shall be built on diameter equal to the diameter of the sewer, and the cover shall be set and constructed upon the top of the sewer.
 Care shall be taken to prevent any part of the man connecting pipe from projecting into the existing sewer.
 The contractor shall, when directed by the Engineer, construct a pipe from the connection with the cover to such a height as diameter above the proposed manhole or inlet connection for connection through existing catch basins or inlets, which have been abandoned, all the portion of the existing catch basins or inlets which shall be removed or the proposed connection shall be covered.
 All fittings such as elbows and crosses shall be paid for at the contract unit price per linear foot for three inch diameter or less.
 The cost of making all manholes with existing or proposed manholes, or with manholes shall be included in the contract unit price.
 No extra compensation will be allowed where it is necessary to increase the depth of catch basins or inlet connections because of existing underground structures.
 All manhole inlets shall be recommended to the main sewer, except abandoned drains which shall be closed by the contractor.
DETAIL OF STORM SEWER CONNECTION TO SEWER
 10-88-812

INFORMATION ONLY