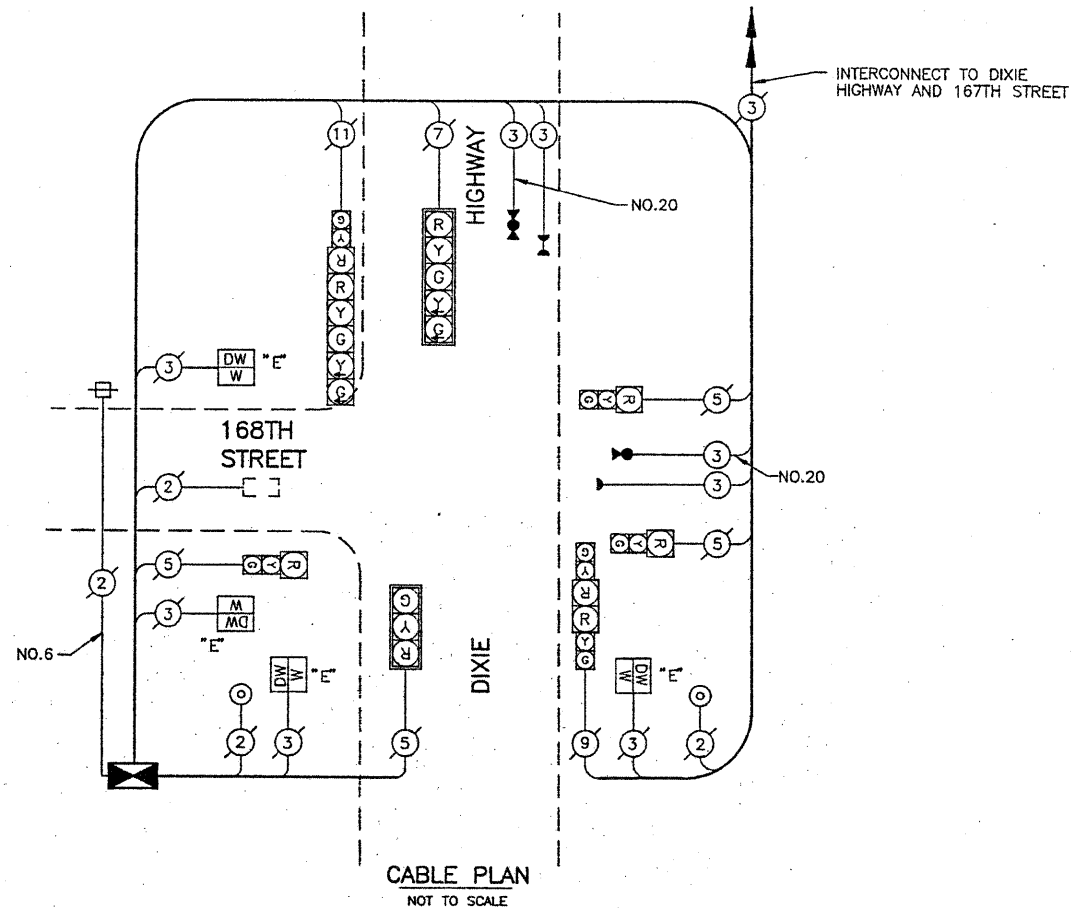
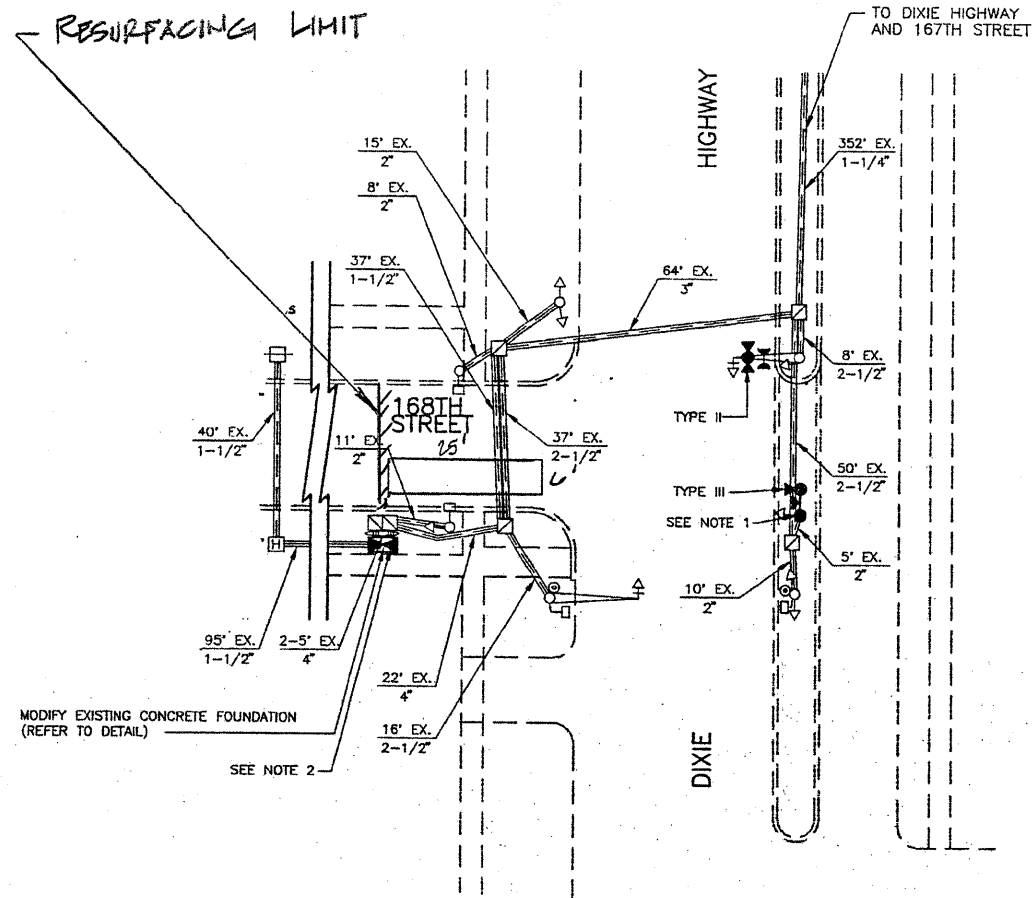


TRAFFIC SIGNAL LEGEND

	PROPOSED	EXISTING
DETECTOR LOOP		
SIGNAL HEAD		
G.S. CONDUIT IN TRENCH OR PUSHED		
SIGNAL HEAD WITH BACKPLATE		
RACEWAY FOR MAGNETIC DETECTOR, TYPE I OR II		
VEHICLE DETECTOR, NON-COMPENSATED MAGNETIC TYPE		



CABLE PLAN
NOT TO SCALE

THIS PLAN IS FOR THE SOLE PURPOSE OF DETECTOR LOOP REPLACEMENTS ONLY

REPLACE ALL DETECTOR LOOPS AS SHOWN (WITHIN THE RESURFACING LIMITS)

CODE	QUANTITY	UNIT	ITEM
86600600	65	FOOT	DETECTOR LOOP, REPLACEMENT

FILE NAME =	USER NAME = kenthaphixaybc	DESIGNED - BCK	REVISED -	STATE OF ILLINOIS DEPARTMENT OF TRANSPORTATION	DISTRICT ONE - DETECTOR LOOP REPLACEMENT DIXIE HIGHWAY @ 168TH STREET	F.A.U. RTE. 2843	SECTION 3248 RS-1	COUNTY Cook	TOTAL SHEETS 26	SHEET NO. 11	
en:\pwork\VPW\DOT\KANTHAPHIXAYBC\d01126	4\traffic.legend.v7.dgn	DRAWN - BCK	REVISED -			SCALE: NONE	SHEET NO. OF SHEETS STA. TO STA.	FED. ROAD DIST. NO.	ILLINOIS FED. AID PROJECT	CONTRACT NO. 60104	
		CHECKED - DAD	REVISED -								
		DATE -	REVISED -								