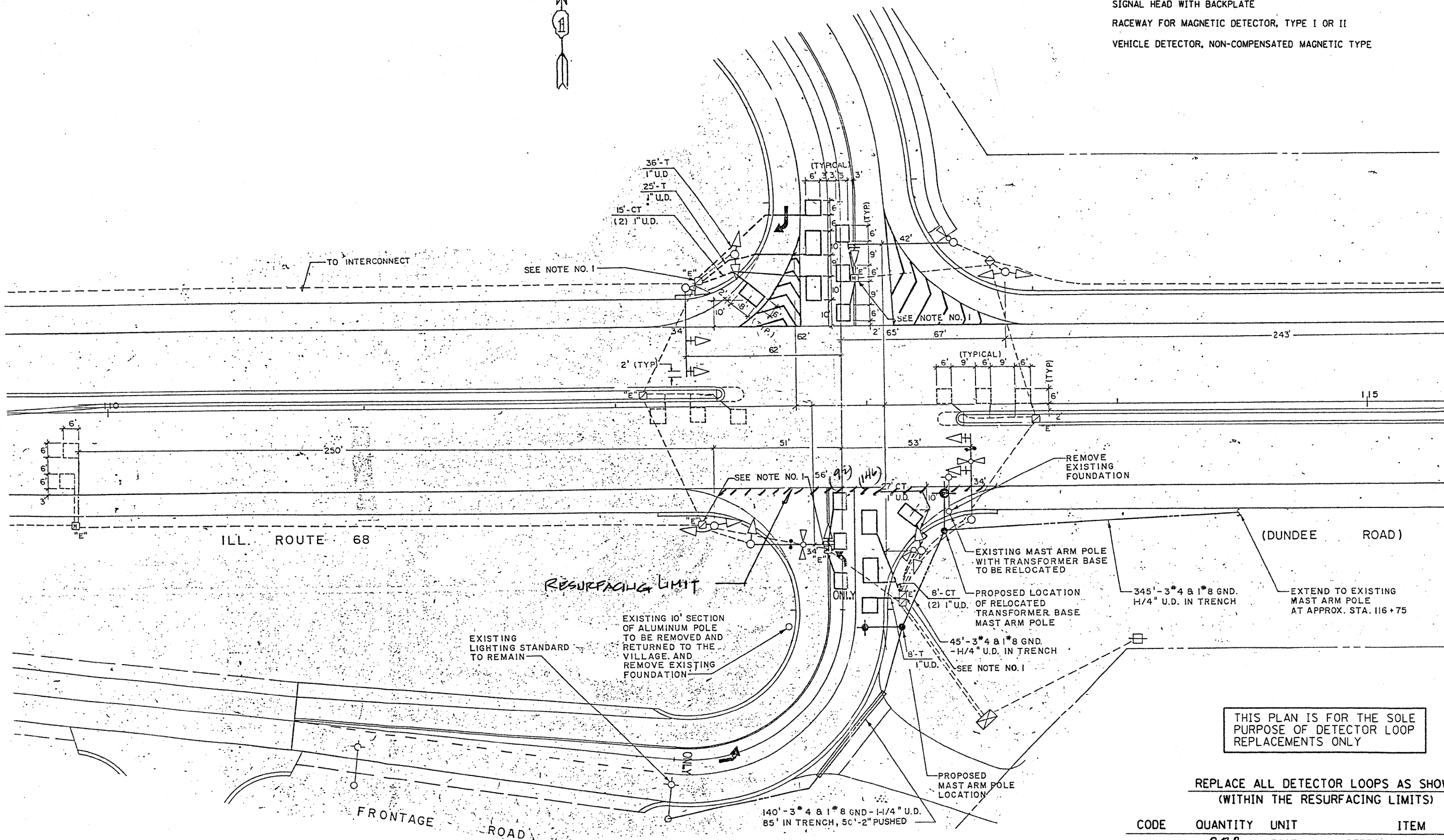


TRAFFIC SIGNAL LEGEND

	PROPOSED	EXISTING
DETECTOR LOOP		
SIGNAL HEAD		
G.S. CONDUIT IN TRENCH OR PUSHED		
SIGNAL HEAD WITH BACKPLATE		
RACEWAY FOR MAGNETIC DETECTOR, TYPE I OR II		
VEHICLE DETECTOR, NON-COMPENSATED MAGNETIC TYPE		



THIS PLAN IS FOR THE SOLE PURPOSE OF DETECTOR LOOP REPLACEMENTS ONLY

REPLACE ALL DETECTOR LOOPS AS SHOWN (WITHIN THE RESURFACING LIMITS)

CODE	QUANTITY	UNIT	ITEM
86600600	238	FOOT	DETECTOR LOOP, REPLACEMENT

FILE NAME =	USER NAME = kentaphixaybo	DESIGNED - BCK	REVISED -
c:\pwork\PIWIDOT\KANTAPHIXAYBC\d01126	traffic.legend.v7.dgn	DRAWN - BCK	REVISED -
	PLOT SCALE = 3/4" = 1' IN.	CHECKED - DAD	REVISED -
	PLOT DATE = 4/3/2009	DATE	REVISED -

**STATE OF ILLINOIS
DEPARTMENT OF TRANSPORTATION**

**DISTRICT ONE - DETECTOR LOOP REPLACEMENT
ILL. ROUTE 68 @ E. FRONTAGE RD.**

SCALE: NONE SHEET NO. OF SHEETS STA. TO STA.

F.A.P. RTE.	SECTION	COUNTY	TOTAL SHEETS	SHEET NO.
305	2009-076RS	Cook	39	19
CONTRACT NO.				
FED. ROAD DIST. NO. ILLINOIS FED. AID PROJECT				