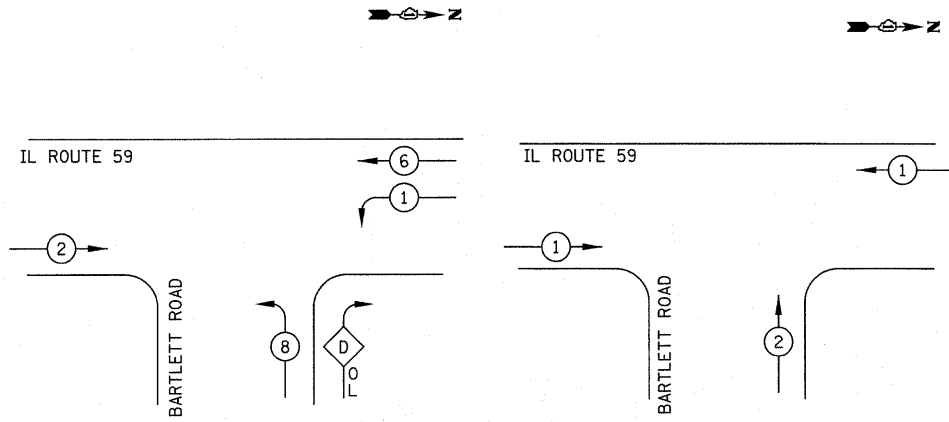
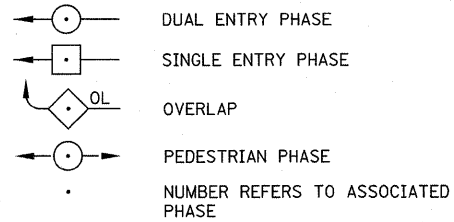


EXISTING AND PROPOSED CONTROLLER SEQUENCE

EXISTING AND PROPOSED EMERGENCY VEHICLE PREEMPTION SEQUENCE



LEGEND



| PROPOSED EMERGENCY VEHICLE PREEMPTORS | | |
|---------------------------------------|-----|-----|
| EMERGENCY VEHICLE PREEMPTOR | 1 | 2 |
| MOVEMENT | ← → | ↑ ↓ |

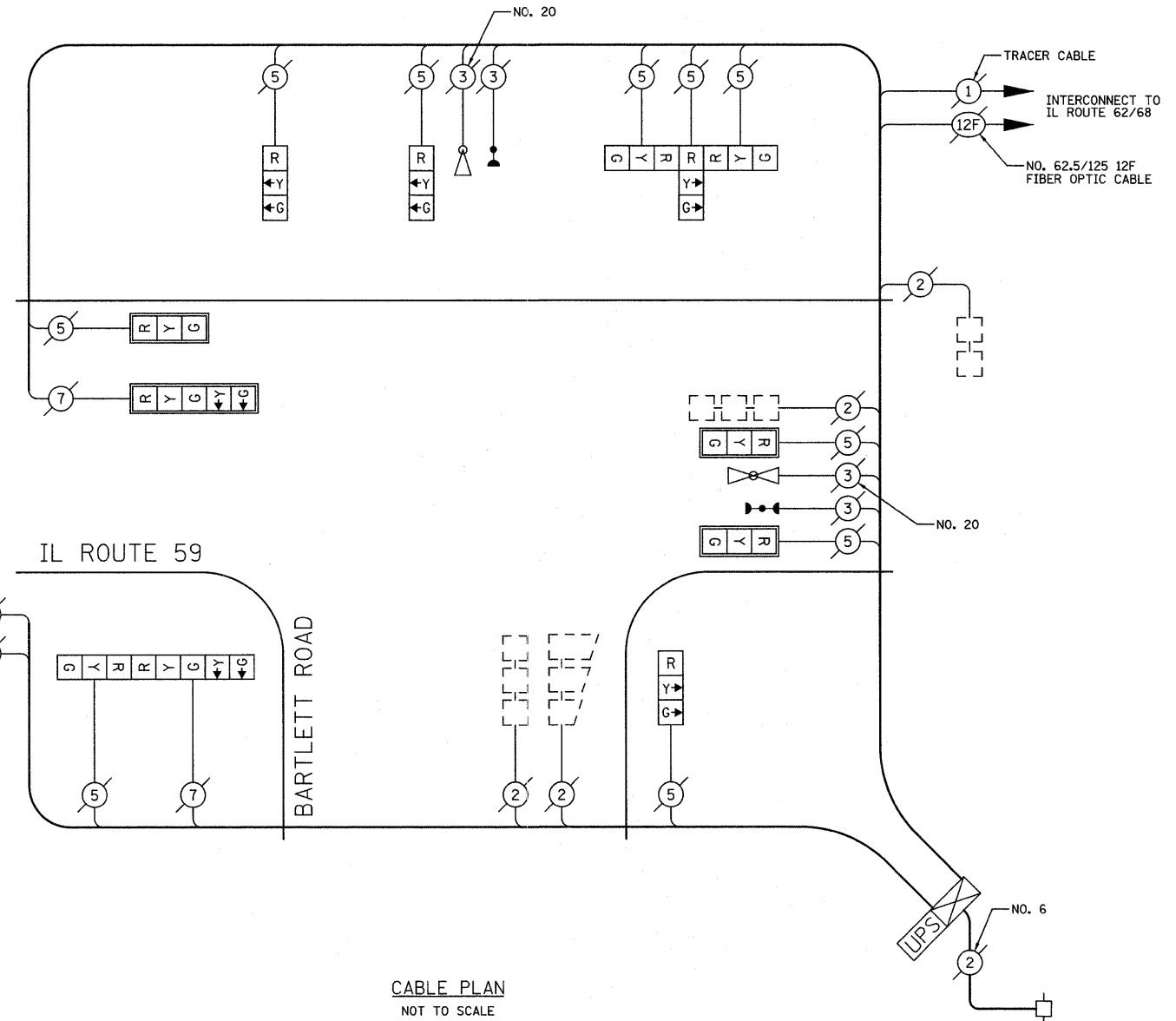
PHASE DESIGNATION DIAGRAM

RIGHT TURN OVERLAP PHASE DESIGNATION

| OVERLAP LETTER | PERMISSIVE PHASE | PROTECTED PHASE |
|----------------|------------------|-----------------|
| D | 8 | 1 |

SCHEDULE OF QUANTITIES

| PAY ITEM | UNIT | QUANTITY |
|--|------|----------|
| MAINTENANCE OF EXISTING TRAFFIC SIGNAL INSTALLATION | EACH | 1 |
| SIGNAL HEAD, L.E.D., 1-FACE, 3-SECTION, MAST ARM MOUNTED | EACH | 3 |
| SIGNAL HEAD, L.E.D., 1-FACE, 3-SECTION, BRACKET MOUNTED | EACH | 3 |
| SIGNAL HEAD, L.E.D., 1-FACE, 5-SECTION, MAST ARM MOUNTED | EACH | 1 |
| SIGNAL HEAD, L.E.D., 2-FACE, 1-3 SECTION, 1-5 SECTION, BRACKET MOUNTED | EACH | 1 |
| SIGNAL HEAD, L.E.D., 3-FACE, 3-SECTION, BRACKET MOUNTED | EACH | 1 |
| TRAFFIC SIGNAL BACKPLATE, LOUVERED, ALUMINUM | EACH | 4 |
| REMOVE EXISTING TRAFFIC SIGNAL EQUIPMENT | EACH | 1 |
| UNINTERRUPTIBLE POWER SUPPLY | EACH | 1 |



CABLE PLAN
NOT TO SCALE

| I.D.O.T. TRAFFIC SIGNAL INSTALLATION ELECTRICAL SERVICE REQUIREMENTS | | | | | TOTAL WATTAGE |
|--|-----------|---------|-----|-------------|---------------|
| TYPE | NO. LAMPS | WATTAGE | | % OPERATION | |
| SIGNAL (RED) | 12 | INCAND. | 17 | 0.50 | 102 |
| (YELLOW) | 12 | | 25 | 0.25 | 75 |
| (GREEN) | 12 | | 15 | 0.25 | 45 |
| ARROW | 4 | | 12 | 0.10 | 5 |
| PED. SIGNAL | | | 25 | 1.00 | |
| CONTROLLER | 1 | | 100 | 1.00 | 100 |
| FLASHER | | | | 0.50 | |
| TOTAL = | | | | | 327 |

ENERGY COSTS TO: ILLINOIS DEPARTMENT OF TRANSPORTATION
201 WEST CENTER COURT
SCHAUMBURG, IL 60196-1096
CONTACT: DOTTIE PROSEN
PHONE: (847) 816-5323
COMPANY: COM ED

NOTE:
THE TRAFFIC SIGNAL CONTROLLER EQUIPMENT FOR THIS PROJECT SHALL BE "EAGLE" TO MATCH THE EXISTING ADJACENT SYSTEM.