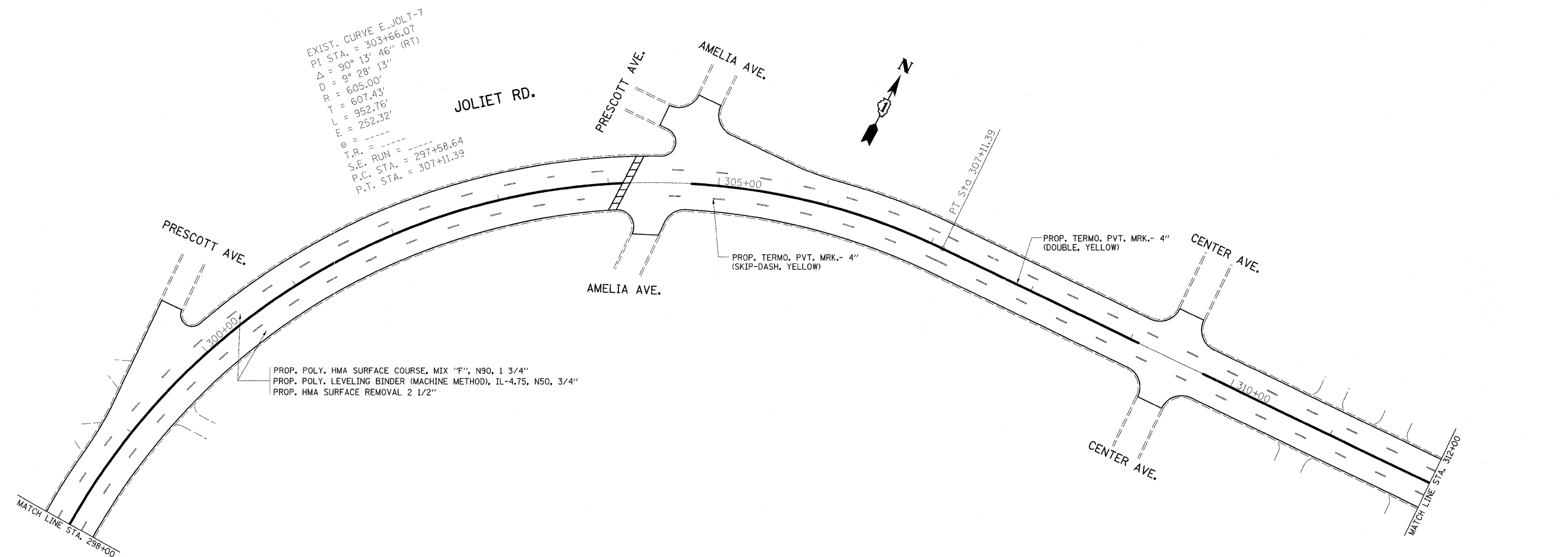


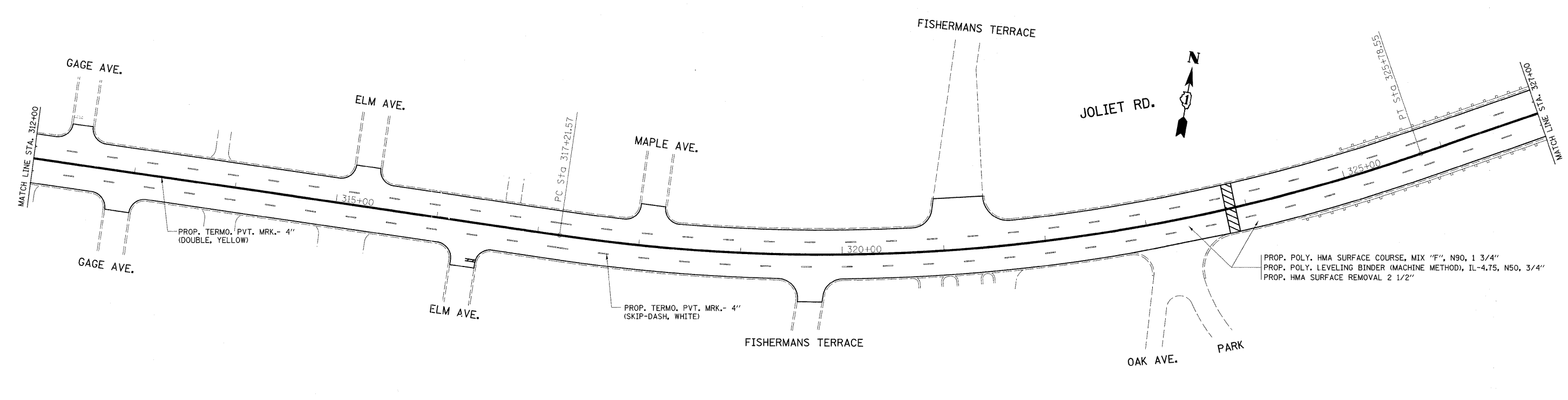
EXIST. CURVE E..JOLIET-7  
 PI STA. = 303+66.07  
 $\Delta = 90^\circ 13' 46''$  (RT)  
 $D = 9^\circ 28' 13''$   
 $R = 605.00'$   
 $T = 607.43'$   
 $L = 952.76'$   
 $E = 252.32'$   
 $e = \dots$   
 T.R. = \dots  
 S.E. RUN = 297+58.64  
 P.C. STA. = 307+11.39  
 P.T. STA. = 307+11.39



PROP. POLY. HMA SURFACE COURSE, MIX "F", N90, 1 3/4"  
 PROP. POLY. LEVELING BINDER (MACHINE METHOD), IL-4.75, N50, 3/4"  
 PROP. HMA SURFACE REMOVAL 2 1/2"

PROP. TERMO. PVT. MRK.- 4"  
 (SKIP-DASH, YELLOW)

PROP. TERMO. PVT. MRK.- 4"  
 (DOUBLE, YELLOW)



PROP. TERMO. PVT. MRK.- 4"  
 (DOUBLE, YELLOW)

PROP. TERMO. PVT. MRK.- 4"  
 (SKIP-DASH, WHITE)

PROP. POLY. HMA SURFACE COURSE, MIX "F", N90, 1 3/4"  
 PROP. POLY. LEVELING BINDER (MACHINE METHOD), IL-4.75, N50, 3/4"  
 PROP. HMA SURFACE REMOVAL 2 1/2"

FILE NAME =	USER NAME = abebawa	DESIGNED -	REVISED -	<b>STATE OF ILLINOIS DEPARTMENT OF TRANSPORTATION</b>	<b>JOLIET RD (I-294 TO IL 43 (HARLEM AVE.)) ROADWAY PLAN</b>			F.A.U. RTE.	SECTION	COUNTY	TOTAL SHEETS	SHEET NO.
ct:\pw_work\pwidat\abebawa\d0157545\10310-sht-pln.dgn	PLOT SCALE = 50.0000' / IN.	DRAWN -	REVISED -					*	2009-131 RS	COOK	51	18
PLOT DATE = 11/20/2009	DATE -	CHECKED -	REVISED -					SCALE: SHEET NO. OF SHEETS STA. TO STA.			CONTRACT NO. 60142	
		DATE -	REVISED -					ILLINOIS FED. AID PROJECT				

\* FAU 3562 & FAU 1504