

STATE OF ILLINOIS
DEPARTMENT OF TRANSPORTATION
DIVISION OF HIGHWAYS

**PROPOSED
HIGHWAY PLANS**

ROUTE: VARIOUS LOCATIONS
SECTION: 2009-090 GRR
VARIOUS LOCATIONS IN NORTHERN WILL COUNTY
GUARDRAIL REPLACEMENTS
PROJECT: ACHSIP-000S(698)
WILL COUNTY
C-91-038-10

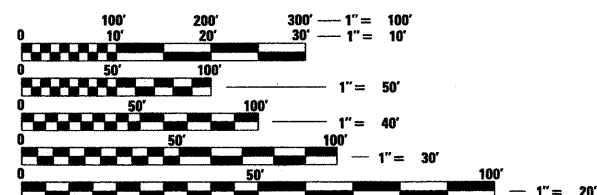
FOR INDEX OF SHEETS, SEE SHEET NO. 2

THE PROJECT IS LOCATED IN THE
CITIES OF JOLIET AND LOCKPORT
AND IN THE VILLAGES OF HOMER
GLEN, NEW LENOX AND PLAINFIELD

F.A. RTE.	SECTION	COUNTY	TOTAL SHEETS	SHEET NO.
•	2009-090 GRR	WILL	17	1
		ILLINOIS	CONTRACT NO. 60143	

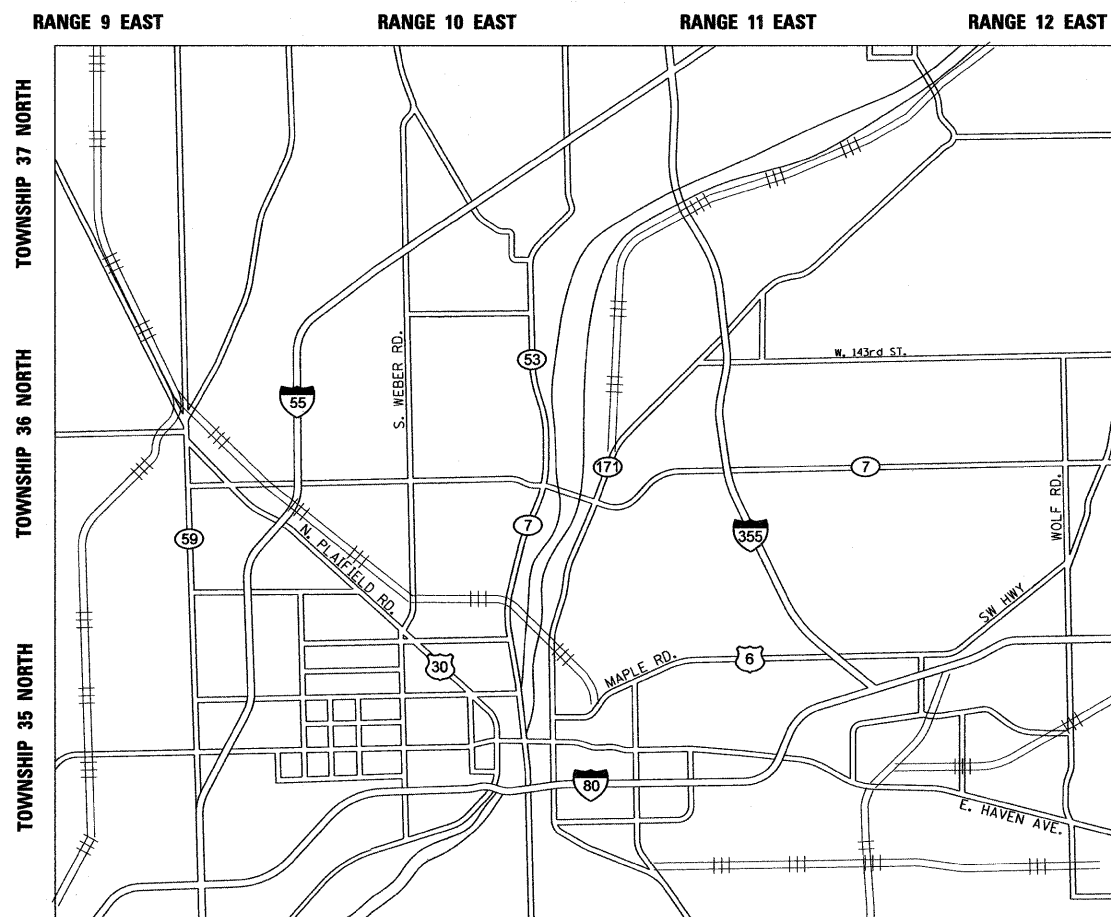
• VARIOUS

D-91-038-10



FULL SIZE PLANS HAVE BEEN PREPARED USING STANDARD ENGINEERING SCALES. REDUCED SIZED PLANS WILL NOT CONFORM TO STANDARD SCALES. IN MAKING MEASUREMENTS ON REDUCED PLANS, THE ABOVE SCALES MAY BE USED.

J.U.L.I.E.
JOINT UTILITY LOCATION INFORMATION FOR EXCAVATION
1-800-892-0123
OR 811



WHEATLAND, DUPAGE, PLAINFIELD, LOCKPORT, HOMER, TROY, JOLIET, NEW LENOX AND FRANKFORT TOWNSHIPS

Peter M. Johnston
12-15-09
PETER M. JOHNSTON
062-047647
REGISTERED
PROFESSIONAL
ENGINEER
OF
ILLINOIS
Exp. 11-30-11

PROJECT ENGINEER: PETER JOHNSTON (GRAEF) 773-399-0012
PROJECT MANAGER: KEN ENG (IDOT) 847-705-4247

CONTRACT NO. 60143

GRAEF 8501 W. Higgins Road, Suite 280
Chicago, Illinois 60631
(773) 399-0112

STATE OF ILLINOIS
DEPARTMENT OF TRANSPORTATION
DIVISION OF HIGHWAYS

SUBMITTED DECEMBER 15, 2009

Diane M. O'Keefe
DEPUTY DIRECTOR OF HIGHWAYS, REGION ENGINEER

January 29, 2010
Scott E. Stief P.E. RD
ENGINEER OF DESIGN AND ENVIRONMENT

January 29, 2010
Christine M. Reed
DIRECTOR OF HIGHWAYS, CHIEF ENGINEER

**PRINTED BY THE AUTHORITY
OF THE STATE OF ILLINOIS**