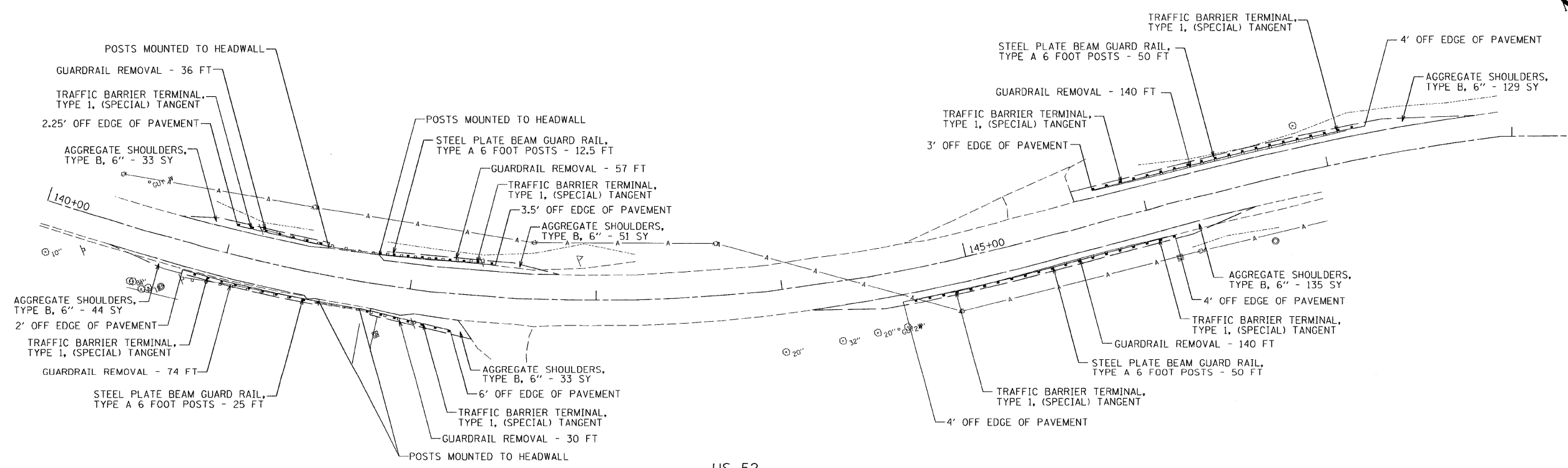
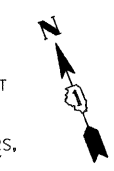


US 52
LOCATION 15



US 52
LOCATION 16 AND 17



FILE NAME =	USER NAME = _USER_	DESIGNED -	REVISED -	STATE OF ILLINOIS DEPARTMENT OF TRANSPORTATION	GUARDRAIL IMPROVEMENTS - NORTHERN WILL COUNTY ROADWAY PLANS	F.A. RTE.	SECTION	COUNTY	TOTAL SHEETS	SHEET NO.
#FILEL#		DRAWN -	REVISED -			•	2009-090GRR	WILL	17	13
	PLOT SCALE = 60,000' / IN.	CHECKED - RS	REVISED -			• VARIOUS				CONTRACT NO. 60143
	PLOT DATE = 12/11/2009	DATE -	REVISED -			SCALE: 30	SHEET NO. OF SHEETS	STA. TO STA.	ILLINOIS FED. AID PROJECT	