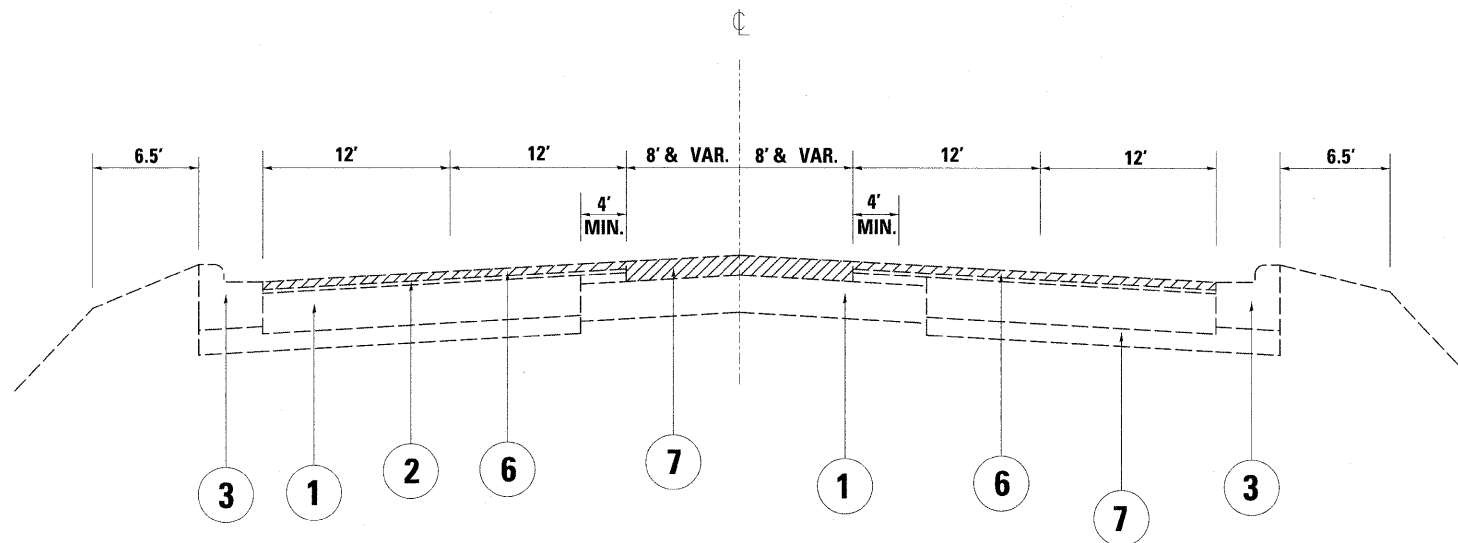


IL 83 @ 127TH

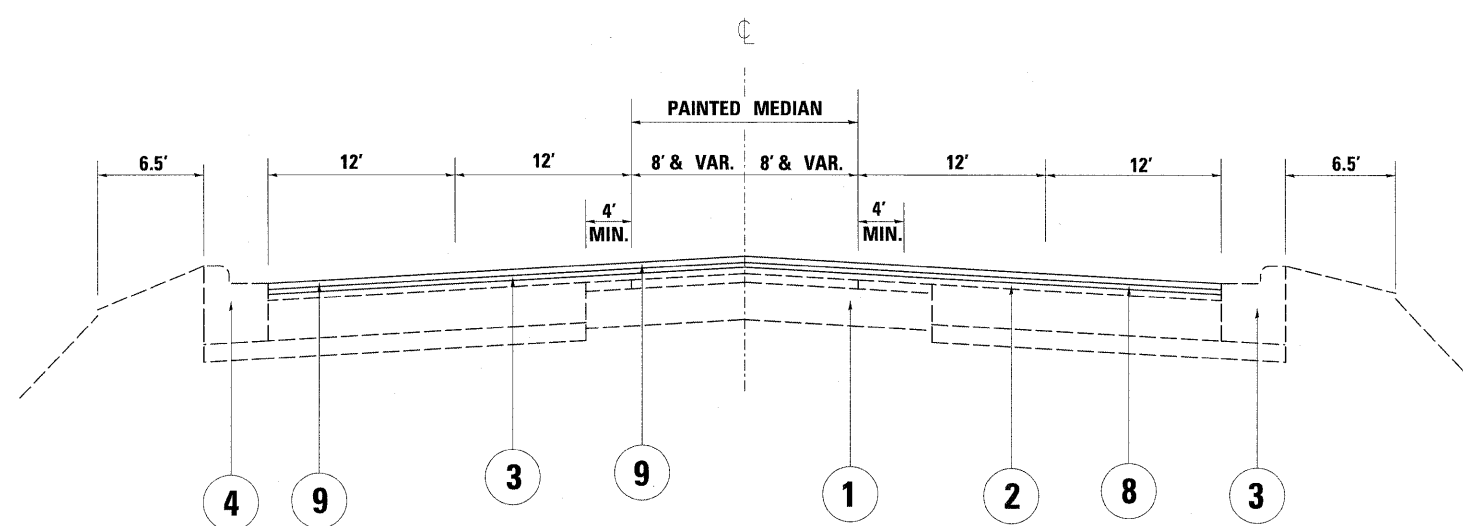


EXIST. TYPICAL SECTION

STA. 107+24.8 TO STA. 128+69

STA. 11+74 TO STA. 20+29

IL 83 @ 127TH



PROP. TYPICAL SECTION

STA. 107+24.8 TO STA. 128+69

STA. 11+74 TO STA. 20+29

LEGEND

- ① EXISTING P.C.C PAVEMENT, 9"
- ② EXISTING HMA SURFACE AFTER MILLING, ±1 1/2"
- ③ EXISTING COMB. CONC. CURB & GUTTER
- ④ EXISTING CONC. MEDIAN TYPE C-4 (MODIFIED)
- ⑤ EXISTING SUB-BASE GRAN. TYPE A
- ⑥ PROPOSED HOT-MIX ASPHALT SURFACE REMOVAL, 2 1/2"
- ⑦ PROPOSED CORRUGATED MEDIAN REMOVAL
- ⑧ PROPOSED POLY. LEVELING BINDER (MACHINE METHOD), IL-4.75, N50, 3/4"
- ⑨ PROPOSED POLY. HOT-MIX ASPHALT SURFACE COURSE, MIX "F", N90, 1 3/4"

MIXTURE REQUIREMENTS

MIXTURE USES	VOIDS
POLY. HOT-MIX ASPHALT SURFACE COURSE, MIX "F", N90 (IL 9.5 mm)	4% AT 90 GYR.
POLY. LEVELING BINDER (MACHINE METHOD), IL-4.75, N50	4% AT 50 GYR.
CLASS D PATCHES (HMA BINDER IL-19 mm)	4% AT 70 GYR.
HOT-MIX ASPHALT REPLACEMENT OVER PATCHES	4% AT 70 GYR.

NOTE 1: THE UNIT WEIGHT USED TO CALCULATE ALL HOT-MIX ASPHALT SURFACE MIXTURE IS 112 LBS/SQYD/IN

NOTE 2: THE "AC TYPE" FOR POLYMERIZED HMA MIXES SHALL BE "SBS/SBR PG 70-22" AND FOR NON-POLYMERIZED HMA THE "AC TYPE" SHALL BE "PG 64-22" UNLESS MODIFIED BY DISTRICT ONE SPECIAL PROVISIONS. FOR "PERCENT OF RAP" SEE DISTRICT ONE SPECIAL PROVISIONS.

THE CONTRACTOR SHALL PATCH FIRST THEN MILL