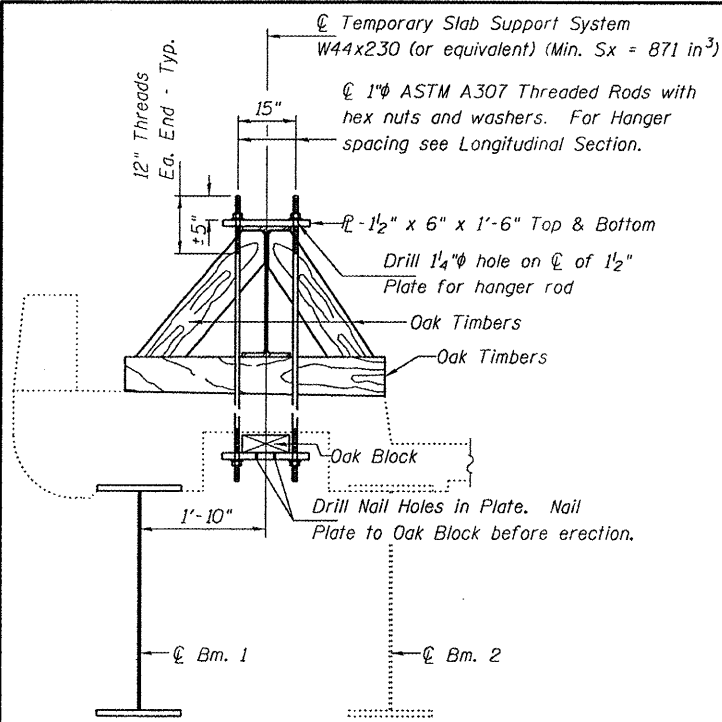
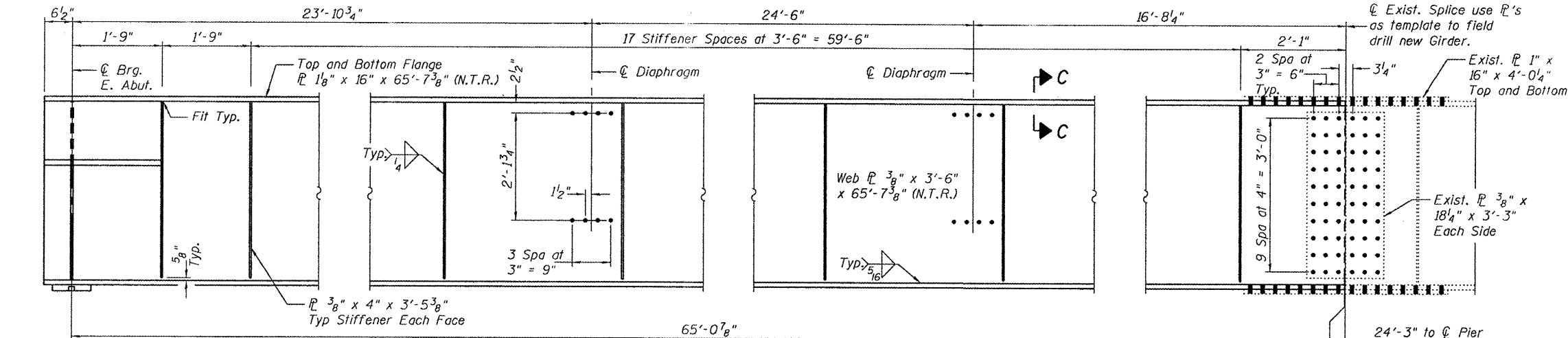


STATE OF ILLINOIS  
DEPARTMENT OF TRANSPORTATION

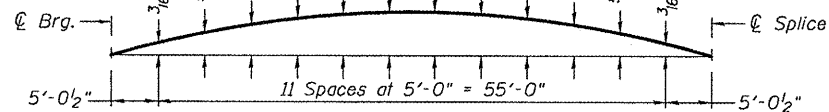


SECTION A-A

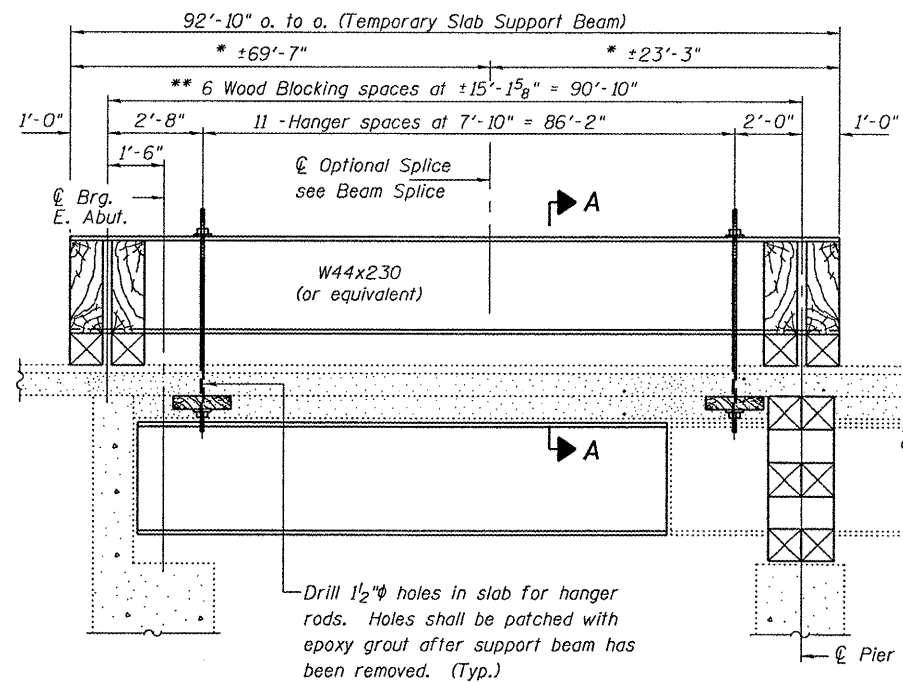
\* These dimensions may vary for available beams in stock.  
\*\* Wood blocking shall be installed after beam is allowed to deflect under its own weight.



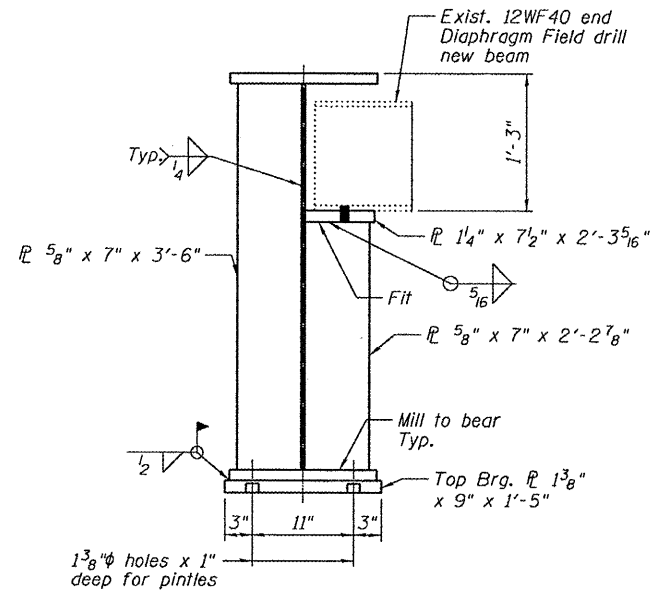
BEAM 1 ELEVATION



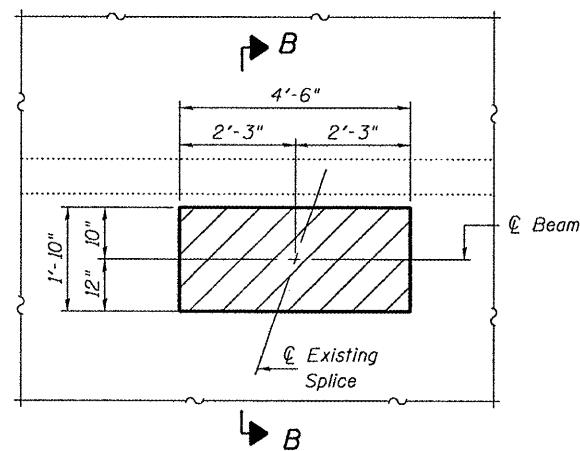
BEAM 1 CAMBER DIAGRAM



LONGITUDINAL SECTION  
SUGGESTED TEMPORARY SLAB SUPPORT SYSTEM

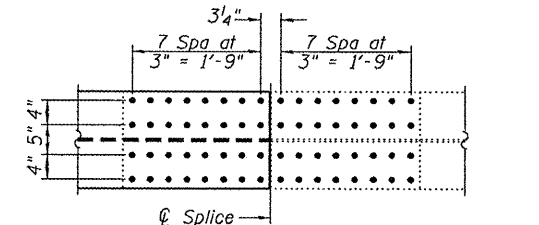


GIRDER END ELEVATION

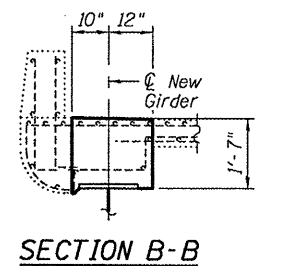


TYPICAL CONCRETE REMOVAL AND REPLACEMENT

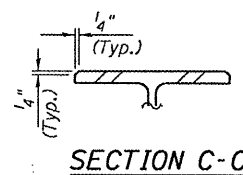
Hatched areas indicate concrete sections to be removed and replaced. Perimeters of concrete removal areas shall be saw cut 3/4 inch prior to the removal of concrete. Reinforcement shall be cut only if required for fitting bolts. Cut reinforcement shall be spliced as directed by the Engineer. Cost shall be included with Concrete Removal.



DIAPHRAGM CONNECTION DETAIL  
(Looking East)



SECTION B-B



SECTION C-C

DETAILS  
SN 016-0575

DESIGNED	A.T.H.
CHECKED	V.H.V.
DRAWN	Drew Christopher
CHECKED	A.T.H. V.H.V.

EXAMINED	January 22, 2010
PASSED	Carl P. Anderson ENGINEER OF STRUCTURAL SERVICES
	Ralph E. Anderson ENGINEER OF BRIDGES AND STRUCTURES

REP-2 1-27-2000

SLT-91-001-09

SHEET NO. 2	F.A.I. RTE.	SECTION	COUNTY	TOTAL SHEETS	SHEET NO.
	57	0203-1001 HB	Cook	11	6
2 SHEETS	FED. ROAD DIST. NO. ILLINOIS		FED. AID PROJECT CONTRACT NO. 60J19		