

F.A. RTE.	SECTION	COUNTY	TOTAL SHEETS	SHEET NO.
	08-00202-00-SW	COOK	118	1
FED. ROAD DIST. NO.	ILLINOIS	CONTRACT NO. 63188		

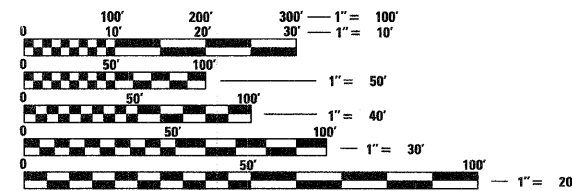
**INDEX OF SHEETS**

SHEET NO.	DESCRIPTION
1	TITLE SHEET, INDEX OF SHEETS
2-3	GENERAL NOTES
4-5	SUMMARY OF QUANTITIES
6	OVERALL PLAN
7	KEY PLAN/ALIGNMENT & TIES NORTH TRAIL
8	KEY PLAN/ALIGNMENT & TIES SOUTH TRAIL
9-11	TYPICAL SECTIONS
12	SCHEDULE OF QUANTITIES
13	EROSION CONTROL NOTES
14	EROSION CONTROL DETAILS
15-20	EROSION CONTROL PLANS
21-33	PLAN & PROFILE
34-35	ROAD CROSSING DETAILS
36-38	CONSTRUCTION DETAILS
39	TC-13 DISTRICT ONE TYPICAL PAVEMENT MARKINGS
40	TC-22 DISTRICT ONE ARTERIAL ROAD INFORMATION SIGN
41	BALLARD ROAD TRAFFIC SIGNAL PLAN
42	BALLARD ROAD CABLE PLAN
43	OAKTON STREET SOLAR-POWERED FLASHING BEACON PLAN
44-47	IDOT TRAFFIC SIGNAL DETAILS
48	WAYFINDING AND INFORMATIONAL SIGN PLAN KEY
49-55	WAYFINDING AND INFORMATIONAL SIGN PLANS
56	PLANTING POCKET AND WALL ENHANCEMENT DETAILS
57-60	WAYFINDING AND INFORMATIONAL SIGN DETAILS
61-118	CROSS SECTIONS

**STATE OF ILLINOIS**  
**DEPARTMENT OF TRANSPORTATION**  
**DIVISION OF HIGHWAYS**  
**PLANS FOR PROPOSED**  
**FEDERAL AID PROJECT**  
**DES PLAINES RIVER TRAIL IMPROVEMENT**  
**E. GOLF ROAD TO E. BALLARD ROAD**  
**AND**  
**E. ALGONQUIN ROAD TO E. TOUHY AVE.**  
**SECTION NO. 08-00202-00-SW**  
**JOB NO. C-91-125-09**  
**PROJECT NO. CMM-9003(116)**  
**CITY OF DES PLAINES**  
**COOK COUNTY**



ASSOCIATE FIELD ENGINEER: KEVIN STALLWORTH, P.E. (847) 705-4169

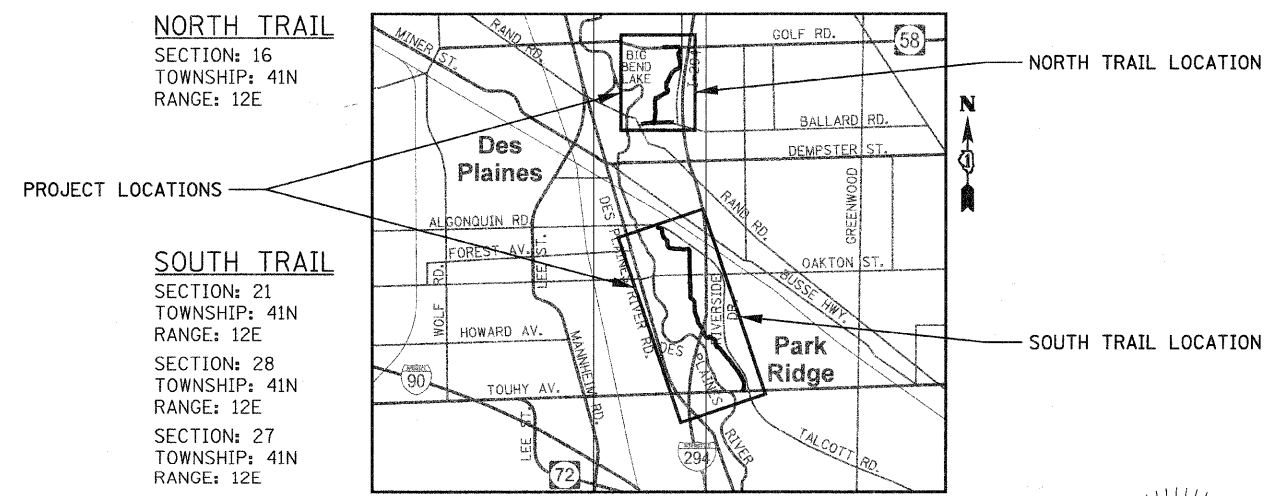


FULL SIZE PLANS HAVE BEEN PREPARED USING STANDARD ENGINEERING SCALES. REDUCED SIZED PLANS WILL NOT CONFORM TO STANDARD SCALES. IN MAKING MEASUREMENTS ON REDUCED PLANS, THE ABOVE SCALES MAY BE USED.

J.U.L.I.E.  
 JOINT UTILITY LOCATION INFORMATION FOR EXCAVATION  
 1-800-892-0123  
 OR 811

**PROJECT ENGINEER**  
**PROJECT MANAGER**

**CONTRACT NO. 63188**

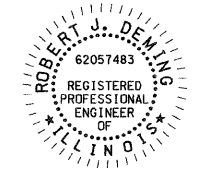


**NORTH TRAIL**  
 SECTION: 16  
 TOWNSHIP: 41N  
 RANGE: 12E

**SOUTH TRAIL**  
 SECTION: 21  
 TOWNSHIP: 41N  
 RANGE: 12E  
 SECTION: 28  
 TOWNSHIP: 41N  
 RANGE: 12E  
 SECTION: 27  
 TOWNSHIP: 41N  
 RANGE: 12E

**TRAFFIC DATA:**  
 CLASSIFICATION: MULTI-USE PATH  
 DESIGN SPEED = 15 MPH  
 ADT = < 100 USERS

**PROJECT LENGTH:**  
 TOTAL TRAIL IMPROVEMENT- 16,385 FT. (3.1 MILES)  
 SOUTH TRAIL - 9,815 FT. (1.86 MILE)  
 NORTH TRAIL - 6,570 FT. (1.24 MILE)  
 MAINLINE - 4,080 FT. (0.77 MILE)  
 BALLARD RD. - 1,663 FT. (0.31 MILE)  
 GOLF RD. - 827 FT. (0.16 MILE)



REGISTERED P.E. STATE OF ILLINOIS  
 EXPIRES 11/30/09

STATE OF ILLINOIS  
 DEPARTMENT OF TRANSPORTATION  
 DIVISION OF HIGHWAYS

APPROVED May 27 2010  
  
 DIRECTOR OF ENGINEERING, CITY OF DES PLAINES

PASSED DECEMBER 3 2009  
  
 DISTRICT 1 ENGINEER OF LOCAL ROADS & STREETS

RELEASED FOR BID BASED ON LIMITED REVIEW December 4, 2009  
  
 DEPUTY DIRECTOR OF HIGHWAYS, REGION ENGINEER

**CIVILTECH** 30 N LaSalle St, Suite 2624 - Chicago, Illinois 60602  
 Tel: 312.726.5910 - Fax: 312.726.5911  
 www.civiltechinc.com

**PRINTED BY THE AUTHORITY  
 OF THE STATE OF ILLINOIS**