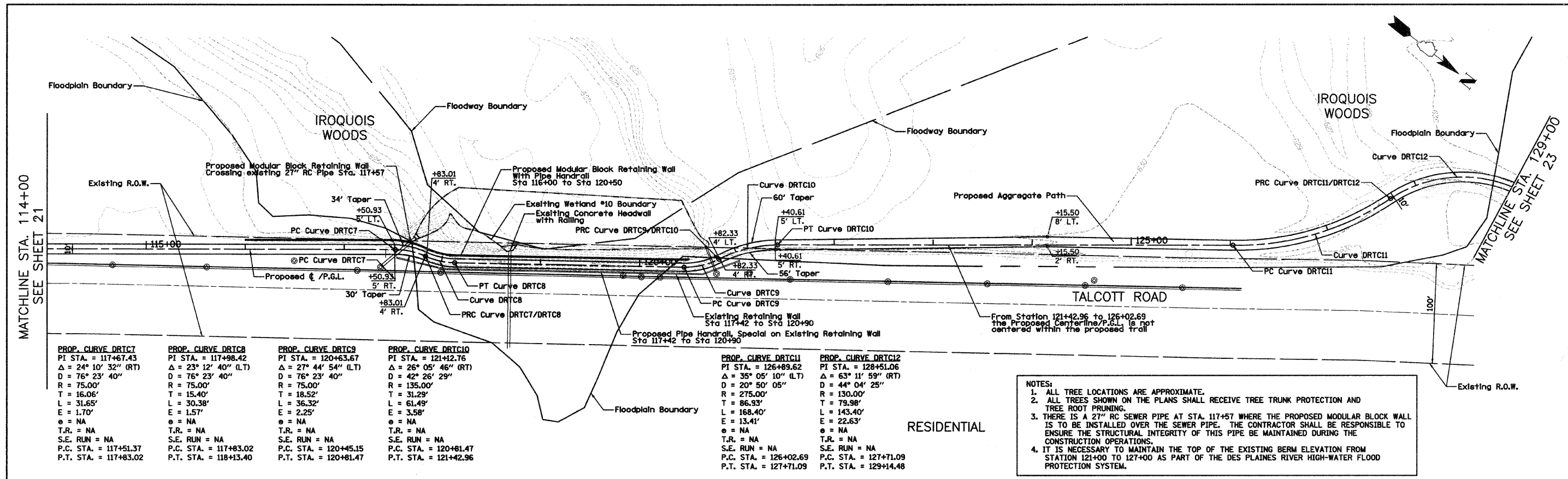


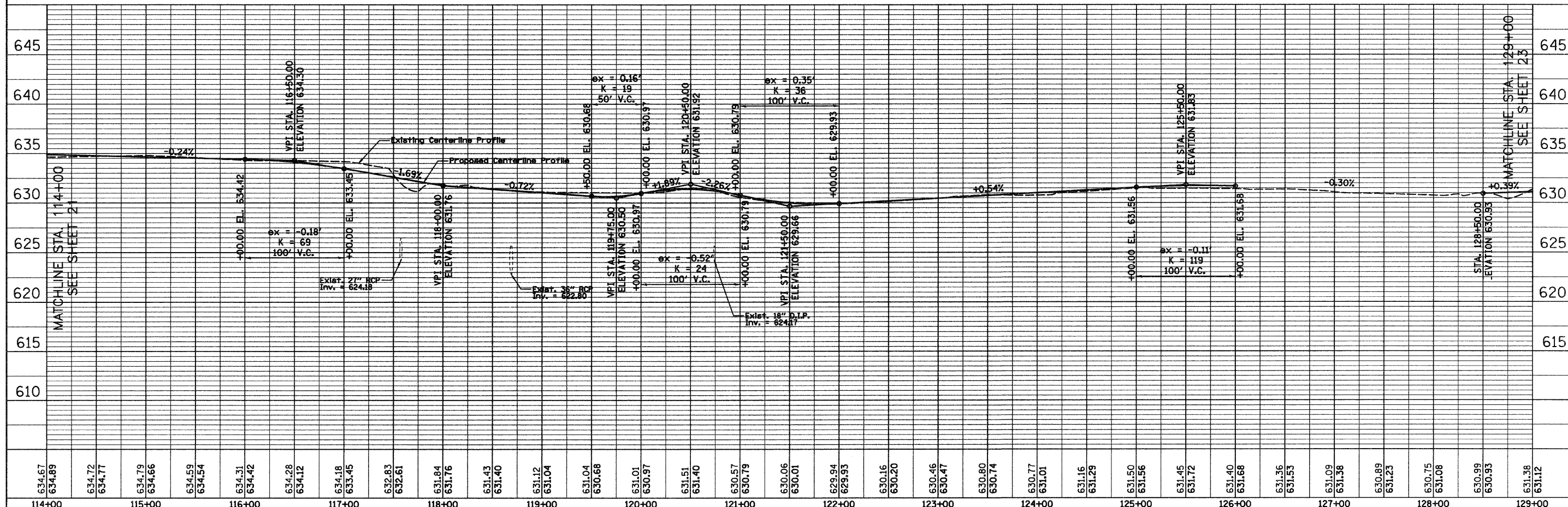
PLAN	SURVEYED	DATE
	DESIGNED	
	CHECKED	
	BY	
	NOTE BOOK	
	RT. OF WAY CHECKED	
	NO.	
	CAD FILE NAME	

PROFILE	SURVEYED	DATE
	DESIGNED	
	CHECKED	
	BY	
	NOTE BOOK	
	RT. OF WAY CHECKED	
	NO.	
	CAD FILE NAME	



PROP. CURVE DRTC7	PROP. CURVE DRTC8	PROP. CURVE DRTC9	PROP. CURVE DRTC10	PROP. CURVE DRTC11	PROP. CURVE DRTC12
PI STA. = 117+67.43	PI STA. = 117+98.42	PI STA. = 120+63.67	PI STA. = 121+42.76	PI STA. = 126+89.62	PI STA. = 128+51.06
Δ = 24° 10' 32" (RT)	Δ = 23° 12' 40" (LT)	Δ = 27° 44' 54" (LT)	Δ = 26° 05' 46" (RT)	Δ = 35° 05' 10" (LT)	Δ = 63° 11' 59" (RT)
D = 76° 23' 40"	D = 76° 23' 40"	D = 76° 23' 40"	D = 42° 26' 29"	D = 20° 50' 05"	D = 44° 04' 25"
R = 75.00'	R = 75.00'	R = 75.00'	R = 135.00'	R = 275.00'	R = 130.00'
T = 16.06'	T = 15.40'	T = 18.52'	T = 31.29'	T = 86.93'	T = 79.98'
L = 31.65'	L = 30.38'	L = 36.32'	L = 61.49'	L = 168.40'	L = 143.40'
E = 1.70'	E = 1.57'	E = 2.25'	E = 3.58'	E = 13.41'	E = 22.63'
e = NA	e = NA	e = NA	e = NA	e = NA	e = NA
T.R. = NA	T.R. = NA	T.R. = NA	T.R. = NA	T.R. = NA	T.R. = NA
S.E. RUN = NA	S.E. RUN = NA	S.E. RUN = NA	S.E. RUN = NA	S.E. RUN = NA	S.E. RUN = NA
P.C. STA. = 117+51.37	P.C. STA. = 117+83.02	P.C. STA. = 120+45.15	P.C. STA. = 120+81.47	P.C. STA. = 126+02.69	P.C. STA. = 127+71.09
P.T. STA. = 117+83.02	P.T. STA. = 118+13.40	P.T. STA. = 120+81.47	P.T. STA. = 121+42.96	P.T. STA. = 127+71.09	P.T. STA. = 129+14.48

- NOTES:
1. ALL TREE LOCATIONS ARE APPROXIMATE.
 2. ALL TREES SHOWN ON THE PLANS SHALL RECEIVE TREE TRUNK PROTECTION AND TREE ROOT PRUNING.
 3. THERE IS A 27" RC SEWER PIPE AT STA. 117+57 WHERE THE PROPOSED MODULAR BLOCK WALL IS TO BE INSTALLED OVER THE SEWER PIPE. THE CONTRACTOR SHALL BE RESPONSIBLE TO ENSURE THE STRUCTURAL INTEGRITY OF THIS PIPE BE MAINTAINED DURING THE CONSTRUCTION OPERATIONS.
 4. IT IS NECESSARY TO MAINTAIN THE TOP OF THE EXISTING BERM ELEVATION FROM STATION 121+00 TO 127+00 AS PART OF THE DES PLAINES RIVER HIGH-WATER FLOOD PROTECTION SYSTEM.



634.67	634.89	634.72	634.77	634.79	634.66	634.59	634.54	634.31	634.42	634.28	634.12	634.18	633.45	632.83	632.61	631.84	631.76	631.43	631.40	631.12	631.04	631.04	630.68	631.01	630.97	631.51	631.40	630.57	630.79	630.06	630.01	629.94	629.93	630.16	630.20	630.46	630.47	630.80	630.74	630.77	631.01	631.16	631.29	631.50	631.56	631.45	631.72	631.40	631.68	631.36	631.53	631.09	631.38	630.89	631.23	630.75	631.08	630.99	630.93	631.38	631.12
114+00	115+00	116+00	117+00	118+00	119+00	120+00	121+00	122+00	123+00	124+00	125+00	126+00	127+00	128+00	129+00																																														