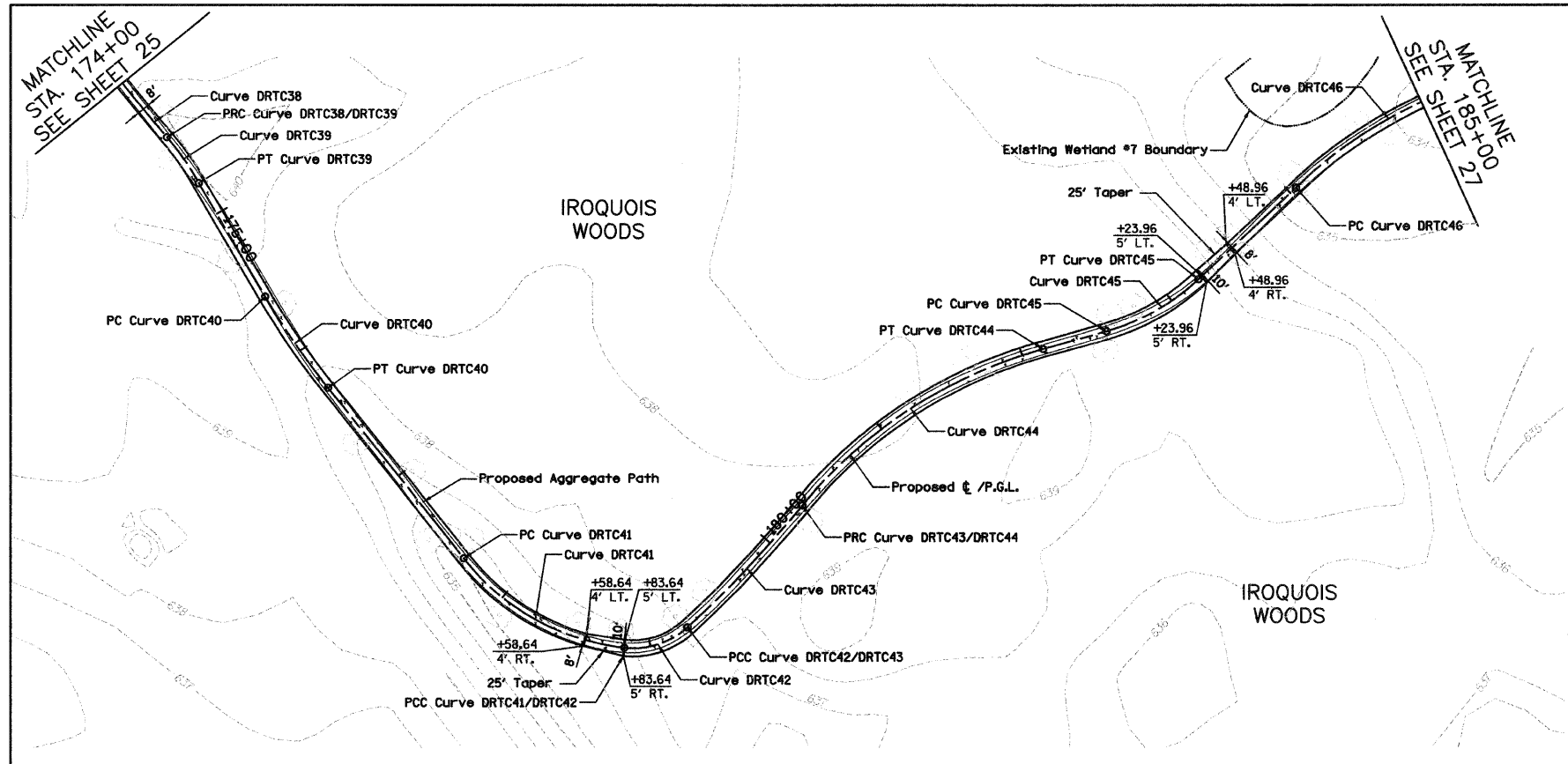


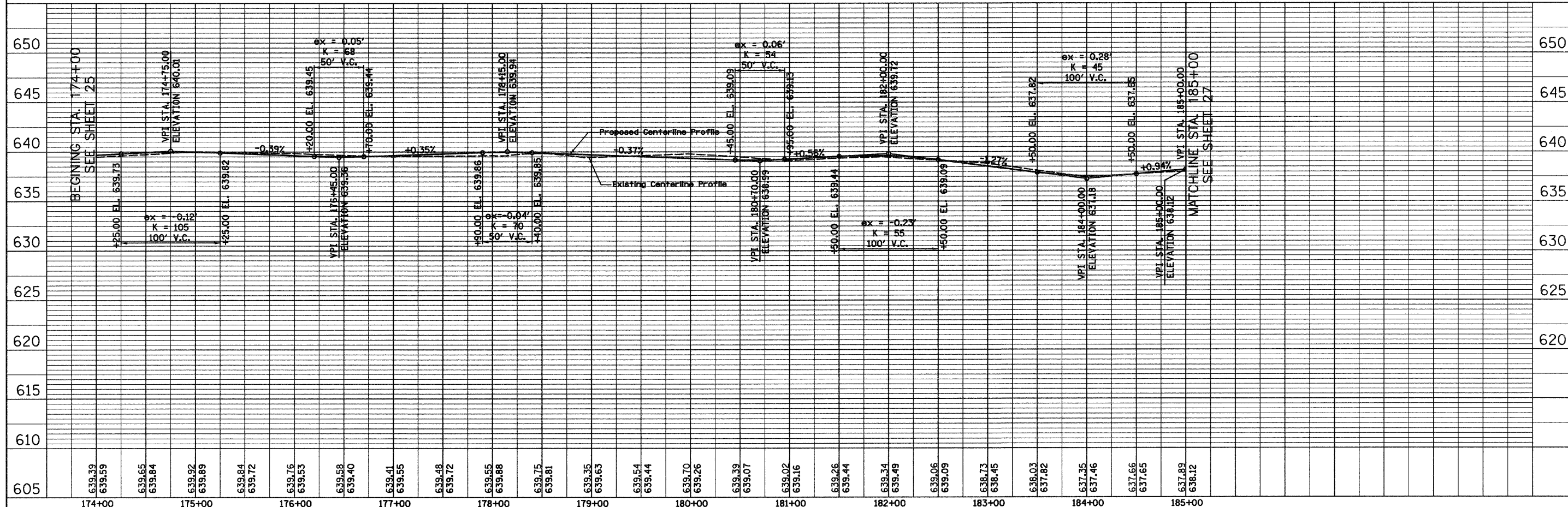
PLAN	SURVEYED	DATE
	ALIGNED	
	CHECKED	
	BY	
	NO.	

PROFILE	SURVEYED	DATE
	GRADES	
	NOTED	
	BY	
	NO.	



NOTES:  
 1. ALL TREE LOCATIONS ARE APPROXIMATE.  
 2. ALL TREES SHOWN ON THE PLANS SHALL RECEIVE TREE TRUNK PROTECTION AND TREE ROOT PRUNING.

<b>PROP. CURVE DRTC38</b> PI STA. = 173+47.62 $\Delta = 6^\circ 07' 08''$ (LT) $D = 3^\circ 10' 59''$ $R = 1,800.00'$ $T = 96.21'$ $L = 192.23'$ $E = 2.57'$ $e = NA$ T.R. = NA S.E. RUN = NA P.C. STA. = 172+51.41 P.T. STA. = 174+43.65	<b>PROP. CURVE DRTC39</b> PI STA. = 174+60.91 $\Delta = 9^\circ 51' 54''$ (RT) $D = 28^\circ 38' 52''$ $R = 200.00'$ $T = 17.26'$ $L = 34.44'$ $E = 0.74'$ $e = NA$ T.R. = NA S.E. RUN = NA P.C. STA. = 174+43.65 P.T. STA. = 174+78.08	<b>PROP. CURVE DRTC40</b> PI STA. = 175+94.61 $\Delta = 7^\circ 57' 56''$ (LT) $D = 11^\circ 27' 33''$ $R = 500.00'$ $T = 34.81'$ $L = 69.51'$ $E = 1.21'$ $e = NA$ T.R. = NA S.E. RUN = NA P.C. STA. = 175+59.80 P.T. STA. = 176+29.31	<b>PROP. CURVE DRTC41</b> PI STA. = 178+28.07 $\Delta = 45^\circ 02' 53''$ (LT) $D = 38^\circ 11' 50''$ $R = 150.00'$ $T = 62.21'$ $L = 117.94'$ $E = 12.39'$ $e = NA$ T.R. = NA S.E. RUN = NA P.C. STA. = 177+65.86 P.T. STA. = 178+83.80	<b>PROP. CURVE DRTC42</b> PI STA. = 179+06.59 $\Delta = 49^\circ 00' 55''$ (LT) $D = 114^\circ 35' 30''$ $R = 50.00'$ $T = 22.79'$ $L = 42.77'$ $E = 4.95'$ $e = NA$ T.R. = NA S.E. RUN = NA P.C. STA. = 178+83.80 P.T. STA. = 179+26.57	<b>PROP. CURVE DRTC43</b> PI STA. = 179+79.00 $\Delta = 7^\circ 59' 51''$ (LT) $D = 7^\circ 38' 22''$ $R = 750.00'$ $T = 52.43'$ $L = 104.69'$ $E = 1.83'$ $e = NA$ T.R. = NA S.E. RUN = NA P.C. STA. = 179+26.57 P.T. STA. = 180+31.26	<b>PROP. CURVE DRTC44</b> PI STA. = 181+25.47 $\Delta = 34^\circ 52' 10''$ (RT) $D = 19^\circ 05' 55''$ $R = 300.00'$ $T = 94.21'$ $L = 182.58'$ $E = 14.45'$ $e = NA$ T.R. = NA S.E. RUN = NA P.C. STA. = 180+31.26 P.T. STA. = 182+13.83	<b>PROP. CURVE DRTC45</b> PI STA. = 182+88.94 $\Delta = 27^\circ 20' 08''$ (LT) $D = 40^\circ 55' 32''$ $R = 140.00'$ $T = 53.83'$ $L = 66.79'$ $E = 4.08'$ $e = NA$ T.R. = NA S.E. RUN = NA P.C. STA. = 182+54.89 P.T. STA. = 183+21.69	<b>PROP. CURVE DRTC46</b> PI STA. = 184+58.92 $\Delta = 20^\circ 20' 47''$ (RT) $D = 19^\circ 05' 55''$ $R = 300.00'$ $T = 53.83'$ $L = 106.53'$ $E = 4.79'$ $e = NA$ T.R. = NA S.E. RUN = NA P.C. STA. = 184+05.09 P.T. STA. = 185+11.62
---	---	---	--	--	---	--	--	---



FILE NAME = 01-2173-eh-tp1nprf06.dgn	USER NAME = CEI.User	DESIGNED - RJD/BJB	REVISED -	<b>STATE OF ILLINOIS DEPARTMENT OF TRANSPORTATION</b>	<b>DES PLAINES RIVER TRAIL IMPROVEMENTS PLAN AND PROFILE</b>		F.A. RTE.	SECTION	COUNTY	TOTAL SHEETS	SHEET NO.
	PLOT SCALE = 50.0000' / IN.	CHECKED - MJF	REVISED -		SCALE: 1"=50'H 1"=5'V	SHEET NO. 6 OF 13 SHEETS	STA. 174+00 TO STA. 185+00	08-00202-00-SW	COOK	118	26
	PLOT DATE = 10/13/2009	DATE - 5/28/09	REVISED -		FED. ROAD DIST. NO.		ILLINOIS FED. AID PROJECT: CMM-9003(116)	CONTRACT NO. 63188			