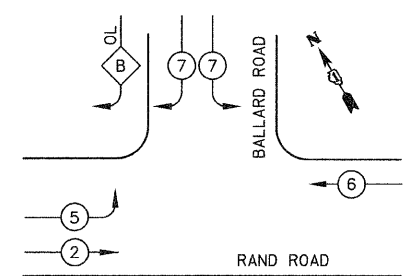
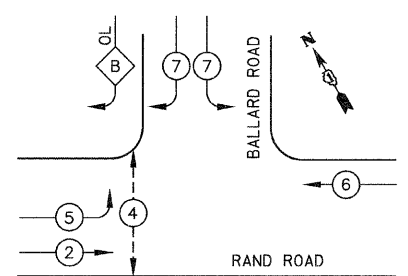


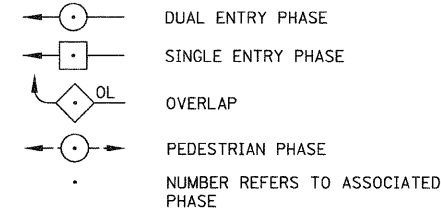
EXISTING CONTROLLER SEQUENCE



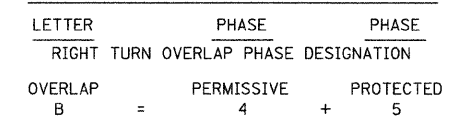
PROPOSED CONTROLLER SEQUENCE



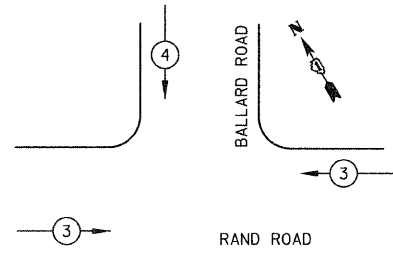
LEGEND



PHASE DESIGNATION DIAGRAM



EXISTING AND PROPOSED EMERGENCY VEHICLE PREEMPTION SEQUENCE



EXISTING EMERGENCY VEHICLE PREEMPTORS		
EMERGENCY VEHICLE PREEMPTOR	3	4
MOVEMENT	← →	↓

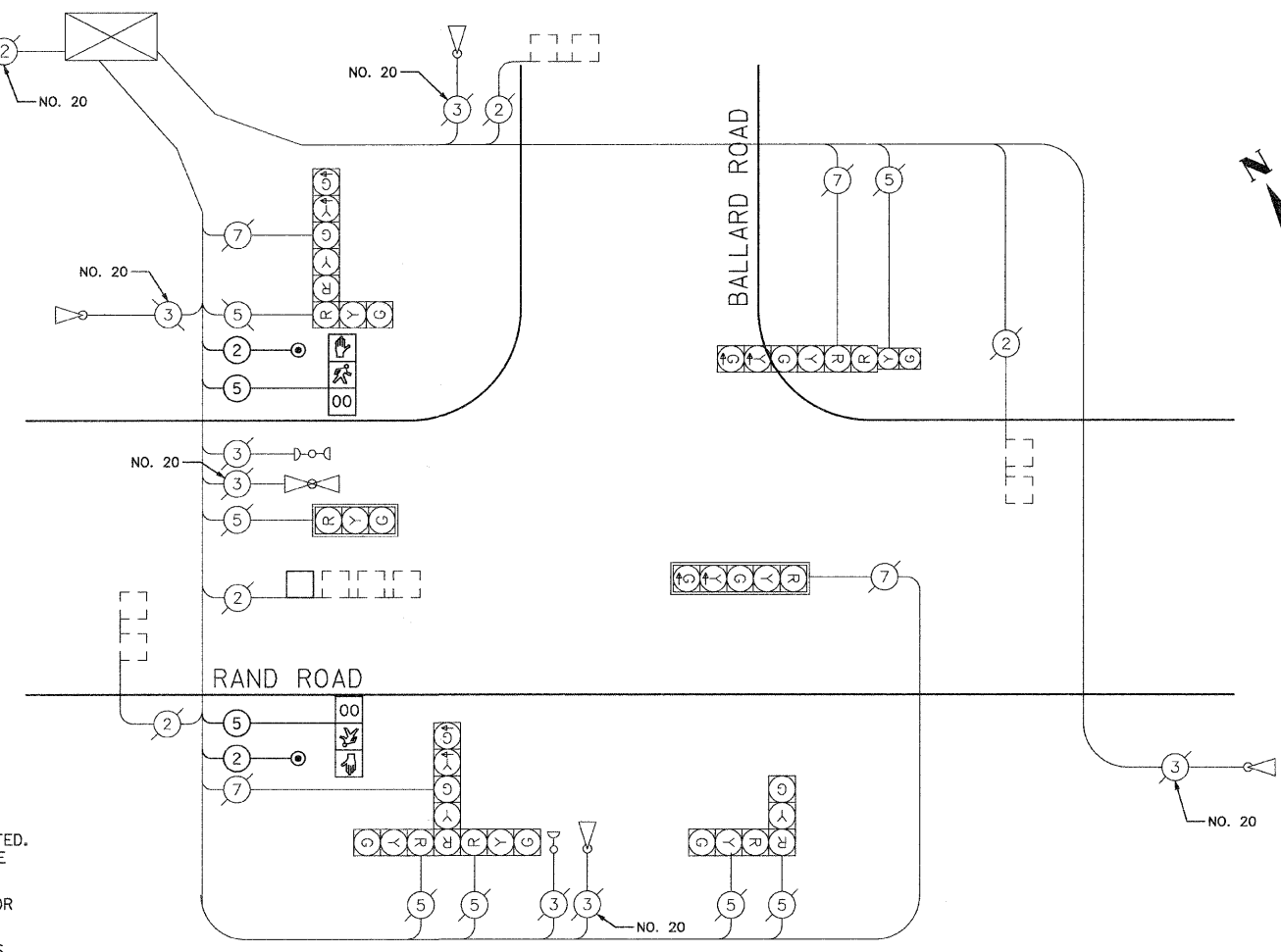
I.D.O.T. TRAFFIC SIGNAL INSTALLATION ELECTRICAL SERVICE REQUIREMENTS					TOTAL WATTAGE
TYPE	NO. LAMPS	WATTAGE INCAND.	LED	% OPERATION	
SIGNAL (RED)	11	135		0.50	743
(YELLOW)	11	135		0.25	372
(GREEN)	11	135		0.25	372
ARROW	8	135		0.10	108
PED SIGNAL	2		25	1.00	50
CONTROLLER	1	100	100	1.00	100
FLASHER				0.50	
TOTAL =					1745

ENERGY COSTS TO: ILLINOIS DEPARTMENT OF TRANSPORTATION
201 W. CENTER CT.
SCHAUMBURG, IL 60196

FOUNDATION (DEPTH)	FT. (m)	CABLE SLACK	FT. (m)	VERTICAL	FT. (m)
TYPE A - POST	4 (1.2)	HANDHOLE	6.5 (2.0)	ALL FOUNDATIONS	3.5 (2.0)
D- CONTROLLER	4 (1.2)	DOUBLE HANDHOLE	13 (4.0)	MAST ARM (L) POLE	20'+L-2=
E- M. ARM POLE		SIGNAL POST	2 (1.0)	6m+L-0.6m)=	
24" (600mm)	10 (3.0)	CONTROLLER CAB.	1 (0.5)	BRACKET MOUNTED	13 (4.0)
30" (750mm)	15 (4.6)	FIBER OPTIC	13 (4.0)	PED. PUSHBUTTON	4 (1.2)
		ELECTRIC SERVICE	1 (0.5)	ELECTRIC SERVICE	13.5 (4.1)
		GROUND CABLE	1 (0.5)	SERVICE TO GROUND	13.5 (4.1)
				POST MOUNTED	6 (1.8)

CABLE PLAN LEGEND

- | EXISTING | PROPOSED | |
|----------|----------|---|
| | | 8" (200mm) TRAFFIC SIGNAL SECTION |
| | | 12" (300mm) TRAFFIC SIGNAL SECTION |
| | | 12" (300mm) PEDESTRIAN SIGNAL SECTION |
| | | 12" (300mm) PEDESTRIAN SIGNAL SECTION WITH COUNTDOWN TIMER |
| | | CONTROLLER CABINET |
| | | SERVICE INSTALLATION |
| | | TELEPHONE CONNECTION |
| | | MAGNETIC DETECTOR |
| | | EMERGENCY VEHICLE LIGHT DETECTOR |
| | | CONFIRMATION BEACON |
| | | PUSHBUTTON DETECTOR |
| | | VEHICLE DETECTOR, INDUCTION LOOP |
| | | DENOTES NUMBER OF CONDUCTORS, ALL CABLE NO. 14 EXCEPT AS INDICATED. ALL LOOP DETECTOR CABLE TO BE SHIELDED. |
| | | MICROWAVE VEHICLE SENSOR |
| | | SIGNAL FACE WITH BACKPLATE, "P" INDICATES PROGRAMMED HEAD |
| | | |
| | | |
| | | |
| | | |
| | | |
| | | |
| | | |
| | | |
| | | |
| | | |
| | | |



CABLE PLAN
NOT TO SCALE

SCHEDULE OF QUANTITIES		
PAY ITEM	UNIT	QUANTITY
CONDUIT IN TRENCH, 2 1/2" DIA., GALVANIZED STEEL	FOOT	5
CONDUIT PUSHED, 2 1/2" DIA., GALVANIZED STEEL	FOOT	21
TRENCH AND BACKFILL FOR ELECTRICAL WORK	FOOT	5
MAINTENANCE OF EXISTING TRAFFIC SIGNAL INSTALLATION	EACH	1
ELECTRIC CABLE IN CONDUIT, SIGNAL NO. 14 2C	FOOT	184
ELECTRIC CABLE IN CONDUIT, SIGNAL NO. 14 5C	FOOT	196
TRAFFIC SIGNAL POST, GALVANIZED STEEL 10 FT.	EACH	2
CONCRETE FOUNDATION, TYPE A	FOOT	8
DRILL EXISTING HANDHOLE	EACH	2
PEDESTRIAN SIGNAL HEAD, L.E.D., 1-FACE, BRACKET MOUNTED WITH COUNTDOWN TIMER	EACH	2
DETECTOR LOOP TYPE I	FOOT	59
PEDESTRIAN PUSH-BUTTON	EACH	2
MODIFY EXISTING CONTROLLER	EACH	1