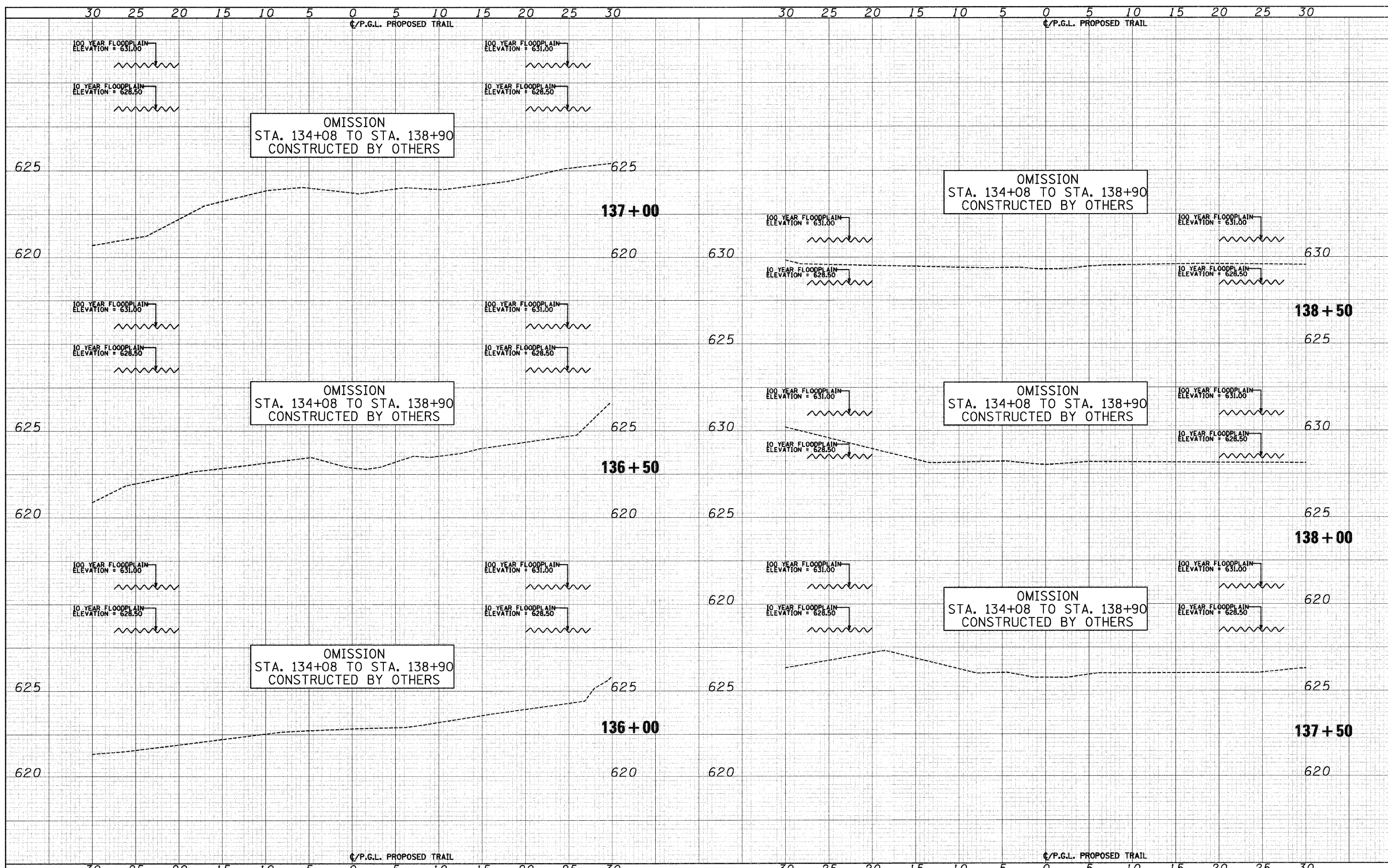


DATE \_\_\_\_\_  
 BY \_\_\_\_\_  
 SURVEYED \_\_\_\_\_  
 PLOTTED \_\_\_\_\_  
 NOTE BOOK \_\_\_\_\_  
 AREAS CHECKED \_\_\_\_\_

DATE \_\_\_\_\_  
 BY \_\_\_\_\_  
 SURVEYED \_\_\_\_\_  
 PLOTTED \_\_\_\_\_  
 NOTE BOOK \_\_\_\_\_  
 AREAS CHECKED \_\_\_\_\_



FILE NAME = J:\2173\phase II\CAD\ssoc\2173-sht-xe south.dgn	USER NAME = CEI User	DESIGNED - RJD/BJB	REVISED -	<b>STATE OF ILLINOIS DEPARTMENT OF TRANSPORTATION</b>	<b>DES PLAINES RIVER TRAIL IMPROVEMENTS CROSS SECTIONS - SOUTH TRAIL</b>	F.A. RTE.	SECTION	COUNTY	TOTAL SHEETS	SHEET NO.
PLOT SCALE = 5.0000' / IN.	CHECKED - MJF	REVISED -	08-00202-00-SW			COOK	118	75		
PLOT DATE = 10/1/2009	DATE - 5/28/09	REVISED -	CONTRACT NO. 63188							
			SCALE: 1"=5'H 1"=2.5'V SHEET NO. 15 OF 58 SHEETS STA. 136+00 TO STA. 138+50 FED. ROAD DIST. NO. ILLINOIS FED. AID PROJECT:							