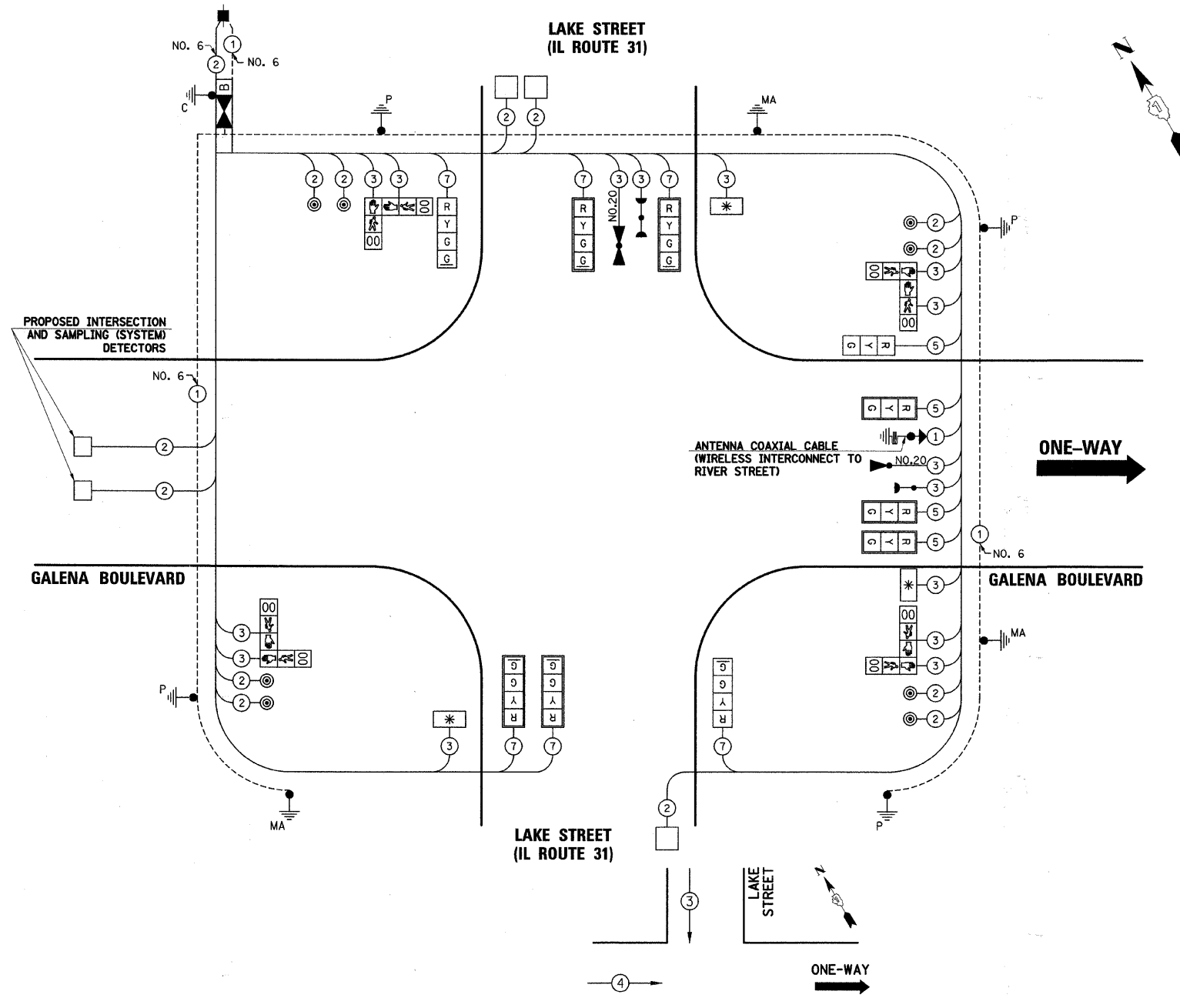


CABLE PLAN LEGEND

- | | | |
|-----------------|-----------------|---|
| EXISTING | PROPOSED | |
| | | 8" (200mm) TRAFFIC SIGNAL SECTION |
| | | 12" (300mm) TRAFFIC SIGNAL SECTION |
| | | 12" (300mm) PEDESTRIAN SIGNAL SECTION |
| | | 12" (300mm) PEDESTRIAN SIGNAL SECTION |
| | | CONTROLLER CABINET |
| | | SERVICE INSTALLATION |
| | | TELEPHONE INSTALLATION |
| | | VEHICLE DETECTOR, INDUCTION LOOP |
| | | MAGNETIC DETECTOR |
| | | EMERGENCY VEHICLE LIGHT DETECTOR |
| | | CONFIRMATION BEACON |
| | | PUSHBUTTON DETECTOR |
| | | LUMINAIRE |
| | | DENOTES NUMBER OF CONDUCTORS. ALL CABLE NO. 14 EXCEPT AS INDICATED. ALL LOOP DETECTOR CABLE TO BE SHIELDED. |
| | | GROUND CABLE IN CONDUIT NO. 6 SOLID COPPER (GREEN) |
| | | FIBER OPTIC CABLE IN CONDUIT NO. 62.5/125 2-MM12F SM12F |
| | | SIGNAL FACE WITH BACKPLATE. "P" INDICATES PROGRAMMED HEAD. |
| | | RAILROAD CONTROL CABINET |
| | | ILLUMINATED SIGN "NO LEFT TURN" |
| | | ILLUMINATED SIGN "NO RIGHT TURN" |
| | | WIRELESS ANTENNA |
| | | GROUND ROD AT HANDHOLE (H), DOUBLE HANDHOLE (HH), OR CONTROLLER (C) |
| | | GROUND ROD AT POST (P) OR MAST ARM POLE (MA) |
| | | GROUND ROD AT ELECTRIC SERVICE INSTALLATION |
| | | UNINTERRUPTIBLE POWER SUPPLY |
| | | LED STREET NAME SIGN |
| | | VIDEO DETECTION CAMERA |
| | | PAN/TILT/ZOOM CAMERA |

DATE	
BY	
REVISION	
NO.	
DATE	
BY	
REVISION	
NO.	

DATE	
BY	
REVISION	
NO.	
DATE	
BY	
REVISION	
NO.	



SCHEDULE OF QUANTITIES

PAY ITEM DESCRIPTION	UNIT	LAKE STREET
PORTLAND CEMENT CONCRETE SIDEWALK 6 INCH	SQ FT	486
DETECTABLE WARNINGS	SQ FT	55
COMBINATION CURB AND GUTTER REMOVAL	FOOT	58
SIDEWALK REMOVAL	SQ FT	439
COMBINATION CONCRETE CURB AND GUTTER, TYPE B-6.24	FOOT	58
SIGN PANEL - TYPE 1	SQ FT	20
THERMOPLASTIC PAVEMENT MARKING - LINE 12"	FOOT	460
THERMOPLASTIC PAVEMENT MARKING - LINE 24"	FOOT	34
PAVEMENT MARKING REMOVAL	SQ FT	366
CONDUIT IN TRENCH, 2" DIA., GALVANIZED STEEL	FOOT	716
CONDUIT IN TRENCH, 2 1/2" DIA., GALVANIZED STEEL	FOOT	57
CONDUIT IN TRENCH, 4" DIA., GALVANIZED STEEL	FOOT	39
CONDUIT PUSHED, 2" DIA., GALVANIZED STEEL	FOOT	138
CONDUIT PUSHED, 2 1/2" DIA., GALVANIZED STEEL	FOOT	55
CONDUIT PUSHED, 4" DIA., GALVANIZED STEEL	FOOT	217
HANDHOLE	EACH	3
DOUBLE HANDHOLE	EACH	1
TRENCH AND BACKFILL FOR ELECTRICAL WORK	FOOT	848
MAINTENANCE OF EXISTING TRAFFIC SIGNAL INSTALLATION	EACH	1
FULL-ACTUATED CONTROLLER AND TYPE IV CABINET, SPECIAL	EACH	1
ELECTRIC CABLE IN CONDUIT, SIGNAL NO. 14 2C	FOOT	1026
ELECTRIC CABLE IN CONDUIT, SIGNAL NO. 14 3C	FOOT	2023.5
ELECTRIC CABLE IN CONDUIT, SIGNAL NO. 14 5C	FOOT	801.5
ELECTRIC CABLE IN CONDUIT, SIGNAL NO. 14 7C	FOOT	803.5
ELECTRIC CABLE IN CONDUIT, LEAD-IN, NO. 14 1 PAIR	FOOT	1809.5
ELECTRIC CABLE IN CONDUIT, SERVICE, NO. 6 2C	FOOT	221.5
TRAFFIC SIGNAL POST, GALVANIZED STEEL 10 FT.	EACH	1
TRAFFIC SIGNAL POST, GALVANIZED STEEL 14 FT.	EACH	1
TRAFFIC SIGNAL POST, GALVANIZED STEEL 15 FT.	EACH	2
STEEL COMBINATION MAST ARM ASSEMBLY AND POLE 28 FT. (SPECIAL)	EACH	1
STEEL COMBINATION MAST ARM ASSEMBLY AND POLE 32 FT. (SPECIAL)	EACH	1
STEEL COMBINATION MAST ARM ASSEMBLY AND POLE 34 FT. (SPECIAL)	EACH	1
CONCRETE FOUNDATION, TYPE A	FOOT	16
CONCRETE FOUNDATION, TYPE C	FOOT	4
CONCRETE FOUNDATION, TYPE E 30-INCH DIAMETER	FOOT	37
DRILL EXISTING HANDHOLE	EACH	13
SIGNAL HEAD, LED, 1-FACE, 3-SECTION, MAST ARM MOUNTED	EACH	3
SIGNAL HEAD, LED, 1-FACE, 3-SECTION, BRACKET MOUNTED	EACH	1
SIGNAL HEAD, LED, 1-FACE, 4-SECTION, BRACKET MOUNTED	EACH	2
SIGNAL HEAD, LED, 1-FACE, 4-SECTION, MAST ARM MOUNTED	EACH	4
PEDESTRIAN SIGNAL HEAD, LED, 2-FACE, BRACKET MOUNTED WITH COUNTDOWN TIMER	EACH	4
TRAFFIC SIGNAL BACKPLATE, LOUVERED, ALUMINUM	EACH	7
INDUCTIVE LOOP DETECTOR	EACH	5
DETECTOR LOOP, TYPE I	FOOT	195.6
LIGHT DETECTOR	EACH	2
LIGHT DETECTOR AMPLIFIER	EACH	1
PEDESTRIAN PUSH-BUTTON	EACH	8
REMOVE ELECTRIC CABLE FROM CONDUIT	FOOT	3373.5
REMOVE EXISTING TRAFFIC SIGNAL EQUIPMENT	EACH	1
REMOVE EXISTING HANDHOLE	EACH	1
REMOVE EXISTING CONCRETE FOUNDATION	EACH	8
SERVICE INSTALLATION - POLE MOUNTED	EACH	1
PAINT TRAFFIC SIGNAL POST	EACH	4
UNINTERRUPTIBLE POWER SUPPLY	EACH	1
ELECTRIC CABLE IN CONDUIT, GROUNDING, NO. 6 1C	FOOT	653
ELECTRIC CABLE IN CONDUIT, NO. 20 3/C TWISTED SHIELDED	FOOT	392.5
L.E.D. INTERNALLY ILLUMINATED STREET NAME SIGN	EACH	3
GROUND EXISTING HANDHOLE FRAME AND COVER	EACH	4

I.D.O.T TRAFFIC SIGNAL INSTALLATION ELECTRICAL SERVICE REQUIREMENTS					
TYPE	NO. LAMPS	WATTAGE		% OPERATION	TOTAL WATTAGE
		INCAND.	LED		
SIGNAL (RED)	10		17	0.50	85
(YELLOW)	10		25	0.25	62.5
(GREEN)	10		15	0.25	37.5
ARROW	6		12	0.10	7.2
PED. SIGNAL	8		25	1.00	200
CONTROLLER	1		100	1.00	100
UPS	1		25	1.00	25
LED SIGN	3		60	0.50	90
TOTAL =					607.2

ENERGY COSTS TO: CITY OF AURORA
44 E. DOWNER PLACE
AURORA, ILLINOIS 60507-2067

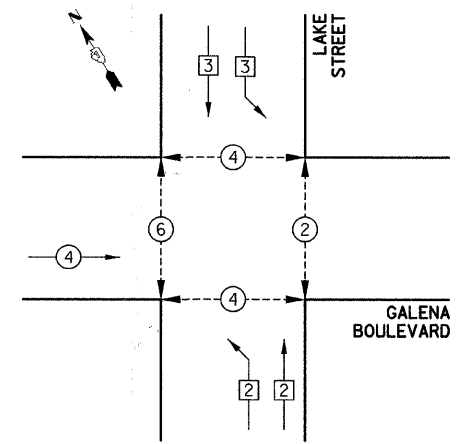
ENERGY SUPPLY CONTACT: MARK SCHERIBEL
PHONE: (630) 723-2128
COMPANY: COMMONWEALTH EDISON

FOUNDATION (DEPTH)	FT. (m)	CABLE SLACK	FT. (m)	VERTICAL	FT. (m)
TYPE A - POST	4 (1.2)	HANDHOLE	6.5 (2.0)	ALL FOUNDATIONS	3.5 (1.0)
C - CONTROLLER	4 (1.2)	DOUBLE HANDHOLE	13 (4.0)	MAST ARM (L) POLE	20'+L-2'=(6m+L-0.6m)
D - CONTROLLER	4 (1.2)	SIGNAL POST	2 (1.0)		
E - M.A. LENGTH		CONTROLLER CAB.	1 (0.5)	BRACKET MOUNTED	13 (4.0)
<30'	30" (900mm)	FIBER OPTIC	13 (4.0)	PED. PUSHBUTTON	4 (1.2)
<40'	30" (750mm)	ELECTRIC SERVICE	1 (0.5)	ELECTRIC SERVICE	13.5 (4.1)
<40'	36" (900mm)	GROUND CABLE	1 (0.5)	SERVICE TO GROUND	13.5 (4.1)
<50'	36" (900mm)			POST MOUNTED	6 (1.8)
>50'	36" (900mm)				

EMERGENCY VEHICLE PREEMPTION SEQUENCE

PROPOSED EMERGENCY VEHICLE PREEMPTORS		
PROPOSED EMERGENCY VEHICLE PREEMPTORS	3	4
MOVEMENT	↑	→

CONTROLLER SEQUENCE



CONTROLLER SEQUENCE LEGEND

- DUAL ENTRY PHASE
- SINGLE ENTRY PHASE
- OVERLAP
- NUMBER REFERRING TO ASSOCIATED PHASE
- PEDESTRIAN PHASE

THE TRAFFIC SIGNAL CONTROL EQUIPMENT FOR THIS PROJECT SHALL BE "ECONOLITE" TO MATCH THE EXISTING ADJACENT SYSTEM.

THE EMERGENCY VEHICLE PREEMPTION EQUIPMENT FOR THIS PROJECT SHALL BE OPTICOM AS REQUIRED BY THE CITY OF AURORA.

PHASE DESIGNATION DIAGRAM