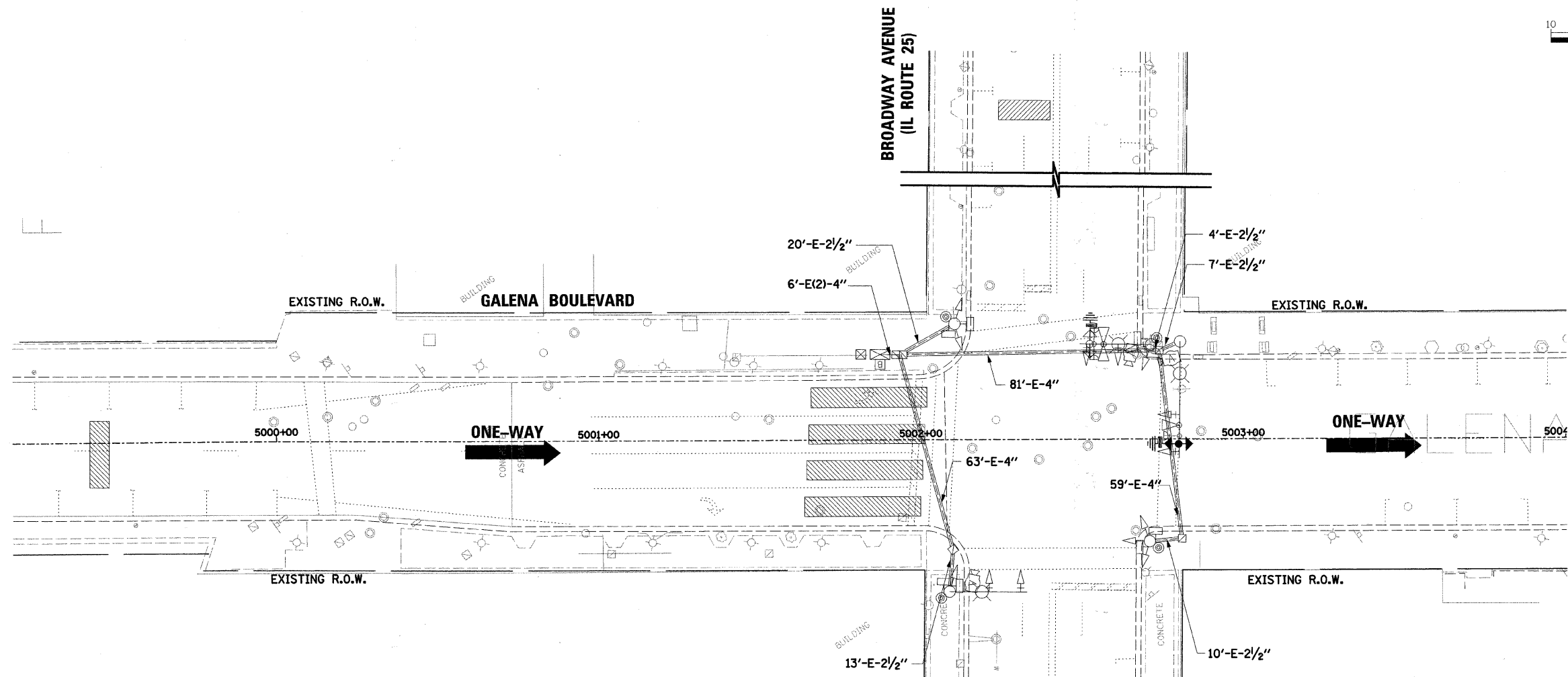
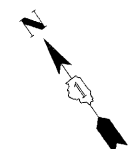
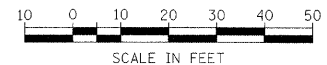


PLAN	SURVEYED	DATE
	ALIGNED	
	CHECKED	
	BY	
	NO.	
	FILE NAME	

PROFILE	SURVEYED	DATE
	PLOTTED	
	GRADES CHECKED	
	BY	
	NO.	
	FILE NAME	



TRAFFIC SIGNAL LEGEND

	PROPOSED	EXISTING		PROPOSED	EXISTING
CONTROLLER			DETECTOR LOOP		
SERVICE INSTALLATION			CAST IRON JUNCTION BOX		
SIGNAL HEAD			EMERGENCY VEHICLE LIGHT DETECTOR		
SIGNAL HEAD WITH BACKPLATE			CONFIRMATION BEACON		
SIGNAL HEAD, PEDESTRIAN			SIGNAL HEAD OPTICALLY PROGRAMMED		
SIGNAL POST			CONDUIT SPLICE		
MAST ARM ASSEMBLY AND POLE, STEEL			WOOD POLE		
MAST ARM ASSEMBLY AND POLE, ALUMINUM			RACEWAY FOR MAGNETIC DETECTOR, TYPE I OR TYPE II		
COMBINATION MAST ARM ASSEMBLY AND POLE, STEEL WITH LUMINAIRE			VEHICLE DETECTOR, NON COMPENSATED MAGNETIC TYPE		
UNIT DUCT	UD		RAILROAD CONTROL CABINET		
COMMON TRENCH	CT		TELEPHONE CONNECTION		
HANDHOLE			ILLUMINATED SIGN "NO LEFT TURN"		
HEAVY DUTY HANDHOLE			ILLUMINATED SIGN "NO RIGHT TURN"		
DOUBLE HANDHOLE			UNINTERRUPTABLE POWER SUPPLY		
G.S. CONDUIT IN TRENCH (T) OR PUSHED (P)			VIDEO DETECTION CAMERA		
PEDESTRIAN PUSHBUTTON DETECTOR			VIDEO DETECTION AREA		
PAN/TILT/ZOOM CAMERA			WIRELESS ANTENNA		

NOTE:
THE WIRELESS ANTENNA SHALL BE MOUNTED ON THE EASTBOUND MAST ARM, 3' NORTH OF THE OUTER SIGNAL HEAD OR AS DIRECTED BY THE ENGINEER (SEE MOUNTING DETAIL).

THIS LOCATION IS CURRENTLY PART OF AN IDOT TRAFFIC SIGNAL MODERNIZATION PROJECT. THIS LOCATION IS ALSO CURRENTLY PART OF A CITY OF AURORA TRAFFIC SIGNAL INTERCONNECT PROJECT. COORDINATION WITH THOSE CONTRACTS WILL BE REQUIRED.

SERVICE LOCATIONS ARE BEING COORDINATED WITH COMED AS PART OF THE IDOT TRAFFIC SIGNAL MODERNIZATION CONTRACT.

FILE NAME = ...\\690.5.sigs4b_broadway.dgn

USER NAME = .USER.
DRAWN BAH
CHECKED APS
PLOT SCALE = #SCALE#
PLOT DATE = 12/17/2009

DESIGNED -
REVISED -
DATE -

REVISED -
REVISED -
REVISED -

STATE OF ILLINOIS
DEPARTMENT OF TRANSPORTATION

TRAFFIC SIGNAL MODERNIZATION PLAN
BROADWAY AVENUE (IL ROUTE 25)

SCALE: SHEET NO. OF SHEETS STA. TO STA.

F.A. RTE.	SECTION	COUNTY	TOTAL SHEETS	SHEET NO.
	08-00270-00-TL	KANE	44	18
FED. ROAD DIST. NO. [ILLINOIS] FED. AID PROJECT			CONTRACT NO. 63300	