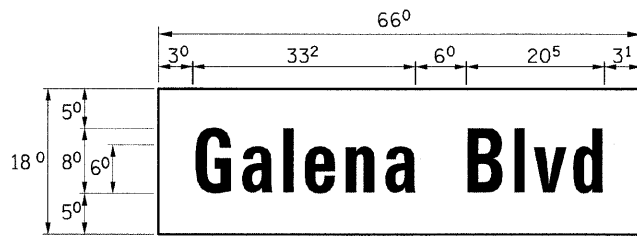
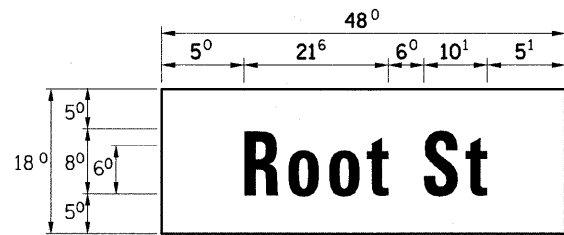


PANEL SIGN DESIGN TYPE 1



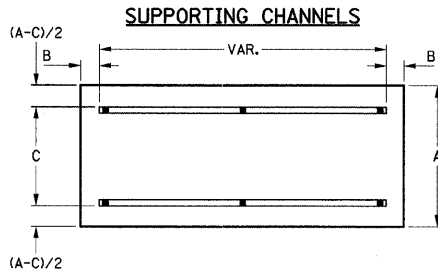
**MA-1**  
8.25 Sq. Ft each  
2 Required  
Design Series D

**NOTE:**  
THESE SIGNS SHALL BE MOUNTED ON THE FRONT AND BACK OF THE MAST ARM POLE PER THE SINGLE ARM DETAIL AT RIGHT OR AS DIRECTED BY THE ENGINEER.



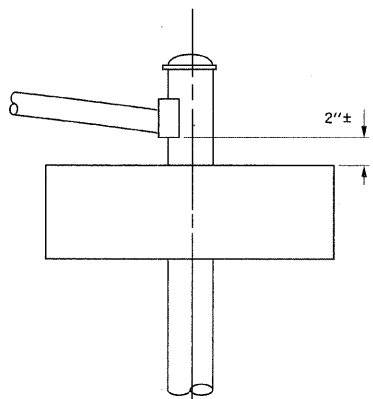
**MA-1**  
6.00 Sq. Ft each  
1 Required  
Design Series D

**NOTE:**  
THIS SIGN SHALL BE MOUNTED ON THE MAST ARM IN ACCORDANCE WITH STANDARD 720016 OR AS DIRECTED BY THE ENGINEER.

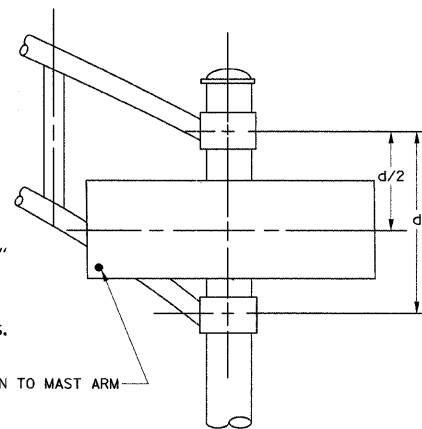


A	B	C
18"	2"	12"
30"	2"	22"

**SIGNFIX ALUMINUM CHANNEL FRAMING SYSTEM** shall be used. See Note #5



**SINGLE ARM**



**DUAL ARM**

**GENERAL NOTES**

- WHERE MAST ARM MOUNTED STREET NAME SIGNS ARE SPECIFIED, THE MAST ARM AND POLES SHALL BE DESIGNED TO SUPPORT THE LOADINGS CALLED FOR ON STANDARDS 2374 THROUGH 2377, AS APPLICABLE, PLUS A 2'-6" BY 6'-0" SIGN PANEL MOUNTED AS SHOWN. THE DESIGN SHALL BE IN ACCORDANCE WITH THE REQUIREMENTS OF THE CURRENT "STANDARD SPECIFICATIONS FOR STRUCTURAL SUPPORTS FOR HIGHWAY SIGNS, LUMINAIRES, AND TRAFFIC SIGNALS" AS PUBLISHED BY THE AMERICAN ASSOCIATION OF STATE HIGHWAY AND TRANSPORTATION OFFICIALS FOR 80 M.P.H. WIND VELOCITY.
- ALL SIGNS SHALL HAVE A WHITE REFLECTORIZED LEGEND AND BORDER ON A GREEN REFLECTORIZED BACKGROUND, TYPE A SHEETING.
- THE SIGN LENGTH SHOULD BE INCREASED IN 6-INCH INCREMENTS, BUT THE OVERALL LENGTH SHOULD NOT EXCEED 6'-0"
- ALL BORDERS SHALL BE 3/4" WIDE AND CORNER RADIUS SHALL BE 2/4".
- SIGNFIX ALUMINUM CHANNEL FRAMING SYSTEM SHALL BE USED FOR ALL SIGNS ATTACHED TO SIGNAL POLES AND POSTS.

**LOCAL SUPPLIERS OF THE SIGNFIX ALUMINUM CHANNEL FRAMING SYSTEM ARE:**

- A.K.T. CORPORATION, SCHAMBURG, IL.
- AMERICAN FABRICATION CO., CHICAGO HEIGHTS, IL.
- TUCKER COMPANY, INC., WAUWATOSA, WI.
- WESTERN TRAFFIC CONTROL, INC., CICERO, IL.

**PARTS LISTING:**

- SIGN CHANNEL PART 3HPN053 (MED. CHANNEL)  
SIGN SCREWS 1/4" X 14 X 1" H.W.H. #3  
BRACKETS SELF TAPPING WITH NEOPREAN WASHER PART #HPN034 (UNIVERSAL)  
CHANNEL CLAMPS WITH STAINLESS STEEL STRAPPING

OTHER BRANDS OF MOUNTING HARDWARE ARE ACCEPTABLE, BASED UPON THE DEPARTMENT'S APPROVAL AND COMPATIBILITY WITH THE CHANNEL/BRACKET OF THE ABOVE PRODUCT.

Upper Case To Lower Case  
Spacing Chart 8-6 Inch Series "C & D"

EXAMPLE, 2 <sup>3</sup> DENOTES 3/8"

FIRST LETTER	SECOND LETTER															
	acde goq		bhikl mnpru		fw		j		st		vy		x		z	
	C	D	C	D	C	D	C	D	C	D	C	D	C	D	C	D
A W X	12	14	14	15	12	14	06	10	11	14	06	10	11	12	12	14
B	14	15	20	21	14	15	11	12	14	15	12	14	12	14	16	17
C E G	14	15	20	21	12	14	06	10	12	14	12	14	14	15	14	15
D O Q R	14	15	20	21	14	15	06	10	12	14	12	14	14	15	14	15
F	05	06	14	15	06	10	05	06	06	10	06	10	06	10	11	12
H I M N	20	21	22	24	20	21	14	15	16	17	16	17	20	21	20	21
J U	20	21	20	21	16	17	14	15	16	17	16	17	16	17	20	21
K L	11	12	16	17	11	12	05	06	11	12	11	12	11	12	12	14
P	12	14	14	15	12	14	05	06	11	12	11	12	12	14	12	14
S	12	14	16	17	12	14	06	10	12	14	12	14	12	14	12	14
T	11	12	16	17	06	10	06	10	11	12	11	12	11	12	12	14
V	06	10	14	15	11	12	06	10	12	14	12	14	12	14	12	14
Y	05	06	14	15	06	10	05	06	05	07	05	06	06	10	11	12
Z	16	17	22	24	16	17	12	14	16	17	16	17	16	17	20	21

Lower Case To Lower Case  
Spacing Chart 6 Inch Series "C & D"

FIRST LETTER	SECOND LETTER																	
	ad h g i j		l m n q u		b f k o p s		c e		r		t z		v y		w		x	
	C	D	C	D	C	D	C	D	C	D	C	D	C	D	C	D	C	D
a d h g i j	16	17	22	24	16	17	12	14	14	15	14	15	16	17	16	17		
l m n q u																		
b f k o p s	12	14	16	17	11	12	05	06	11	12	11	12	12	14	12	14		
c e	12	14	16	17	12	14	06	10	12	14	12	14	12	14	12	14		
r	06	10	12	14	06	10	03	03	05	06	05	06	06	10	06	10		
t z	12	14	16	17	12	14	06	10	11	12	11	12	12	14	12	14		
v y	11	12	14	15	11	12	05	06	06	10	06	10	11	12	11	12		
w	11	12	14	15	11	12	05	06	11	12	11	12	11	12	12	14		
x	12	14	16	17	11	12	05	06	11	12	11	12	11	12	12	14		

Number To Number  
Spacing Chart 8 Inch Series "C & D"

FIRST LETTER	SECOND LETTER																			
	0		1		2		3		4		5		6		7		8		9	
	C	D	C	D	C	D	C	D	C	D	C	D	C	D	C	D	C	D	C	D
0 9	16	17	16	17	14	15	12	14	14	15	14	15	16	17	12	14	16	17	16	17
1	20	21	20	21	20	21	16	17	14	15	20	21	20	21	14	15	20	21	20	21
2 3 4	14	15	14	15	14	15	12	14	12	14	14	15	14	15	11	12	16	17	14	15
5	14	15	14	15	14	15	11	12	11	12	14	15	14	15	11	12	14	15	14	15
6	16	17	14	15	14	15	12	15	12	14	14	15	14	15	11	12	14	15	14	15
7	12	14	12	14	14	15	12	15	05	06	12	14	14	15	11	12	14	15	12	14
8	16	17	16	17	14	15	12	15	12	14	14	15	16	17	12	14	16	17	14	15

NUMBER	6 INCH SERIES		8 INCH SERIES	
	C	D	C	D
1	12	14	15	20
2	32	40	43	53
3	32	40	43	53
4	35	43	47	57
5	32	40	43	53
6	32	40	43	53
7	32	40	43	53
8	32	40	43	53
9	32	40	43	53
0	34	42	45	55

BY	
DATE	
SURVEYED	
DESIGNED	
NOTED	
CHECKED	
PLANNED	
FILED	

BY	
DATE	
PROFILE	
SURVEYED	
DESIGNED	
NOTED	
CHECKED	
PLANNED	
FILED	

FILE NAME	USER NAME
...rtn.dwg\690.5.sig86d.root.dgn	...USER...
PLOT SCALE	PLOT DATE
SCALE = #SCALE#	12/17/2009

DESIGNED	REVISED
DRAWN BAH	REVISED
CHECKED APS	REVISED
DATE	REVISED

DESIGNED	REVISED
DRAWN BAH	REVISED
CHECKED APS	REVISED
DATE	REVISED

DESIGNED	REVISED
DRAWN BAH	REVISED
CHECKED APS	REVISED
DATE	REVISED

STATE OF ILLINOIS			
DEPARTMENT OF TRANSPORTATION			
SCALE:	SHEET NO.	OF SHEETS	STA.
			TO STA.

MAST ARM MOUNTED			
STREET NAME SIGNS			
ROOT STREET			
FED. ROAD DIST. NO.		ILLINOIS FED. AID PROJECT	

F.A. RTE.	SECTION	COUNTY	TOTAL SHEETS	SHEET NO.
	08-00270-00-TL	KANE	44	26
CONTRACT NO. 63300				