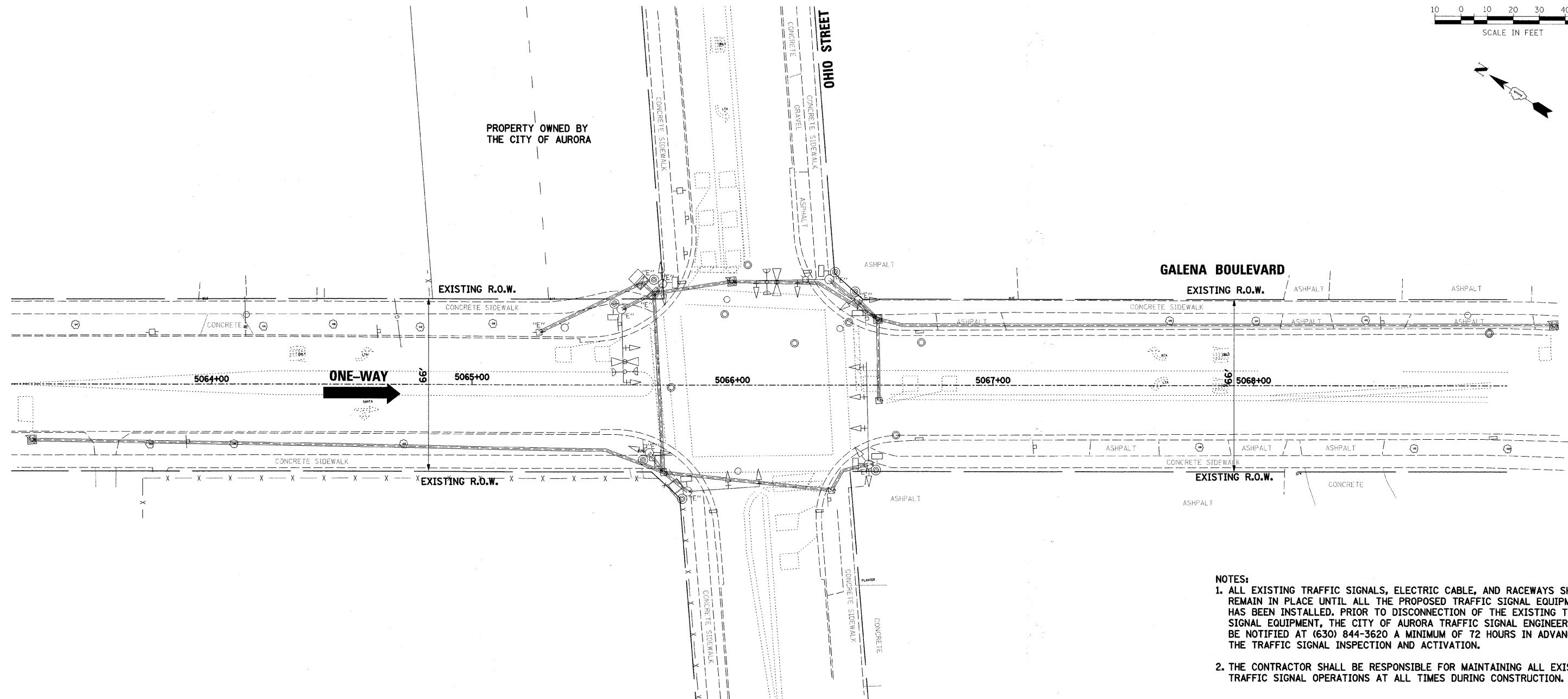


PLAN	SURVEYED	DATE
	PLOTTED	
	CHECKED	
	RT. OF WAY CHECKED	
	NO. _____	
	CADD FILE NAME	

PROFILE	SURVEYED	DATE
	PLOTTED	
	CHECKED	
	BAV NOTED	
	NO. _____	
	STRUCTURE NOTATIONS CHKD	



- NOTES:**
- ALL EXISTING TRAFFIC SIGNALS, ELECTRIC CABLE, AND RACEWAYS SHALL REMAIN IN PLACE UNTIL ALL THE PROPOSED TRAFFIC SIGNAL EQUIPMENT HAS BEEN INSTALLED. PRIOR TO DISCONNECTION OF THE EXISTING TRAFFIC SIGNAL EQUIPMENT, THE CITY OF AURORA TRAFFIC SIGNAL ENGINEER SHALL BE NOTIFIED AT (630) 844-3620 A MINIMUM OF 72 HOURS IN ADVANCE OF THE TRAFFIC SIGNAL INSPECTION AND ACTIVATION.
 - THE CONTRACTOR SHALL BE RESPONSIBLE FOR MAINTAINING ALL EXISTING TRAFFIC SIGNAL OPERATIONS AT ALL TIMES DURING CONSTRUCTION.

THE EXISTING CONDUITS AND VEHICLE DETECTORS (WHERE APPLICABLE) SHALL BE ABANDONED.

THE FOLLOWING ITEMS SHALL BE REMOVED BY THE CONTRACTOR AND SHALL BE DISPOSED OF BY HIM OUTSIDE THE RIGHT-OF-WAY AT HIS EXPENSE. THE SALVAGE VALUE OF THE REMOVED EQUIPMENT SHALL BE REFLECTED IN THE CONTRACT BID PRICE. THIS WORK SHALL BE PAID FOR AT THE CONTRACT UNIT PRICE EACH FOR REMOVE EXISTING TRAFFIC SIGNAL EQUIPMENT (SEE SCHEDULE OF QUANTITIES FOR REMOVAL ITEMS TO BE PAID FOR SEPERATELY).

- 1 EACH COMBINATION MAST ARM ASSEMBLY AND POLE
- 3 EACH MAST ARM ASSEMBLY AND POLE
- 3 EACH TRAFFIC SIGNAL POST
- 17 EACH TRAFFIC SIGNAL HEADS
- 7 EACH PEDESTRIAN PUSHBUTTONS
- 8 EACH PEDESTRIAN SIGNAL HEADS
- 9 EACH TRAFFIC SIGNAL BACKPLATES
- 1 EACH SERVICE INSTALLATION

THE FOLLOWING EXISTING TRAFFIC SIGNAL EQUIPMENT SHALL BE REMOVED BY THE CONTRACTOR, SHALL REMAIN THE PROPERTY OF THE CITY OF AURORA AND SHALL BE DELIVERED BY THE CONTRACTOR TO THE MAINTENANCE FACILITY DESIGNATED BY THE CITY. THIS WORK SHALL BE INCLUDED IN THE CONTRACT UNIT PRICE FOR REMOVE EXISTING TRAFFIC SIGNAL EQUIPMENT.

- 1 EACH TRAFFIC SIGNAL CONTROLLER AND CABINET (COMPLETE)
- 2 EACH LIGHT DETECTOR
- 2 EACH CONFIRMATION BEACON
- 1 EACH LUMINAIRE

EXISTING EQUIPMENT TO BE REMOVED LEGEND

- EXISTING SIGNAL HEAD TO BE REMOVED
- EXISTING SERVICE INSTALLATION TO BE REMOVED
- EXISTING SIGNAL POST AND FOUNDATION TO BE REMOVED
- EXISTING ALUMINUM MAST ARM POLE AND FOUNDATION TO BE REMOVED
- EXISTING CONTROLLER AND FOUNDATION TO BE REMOVED
- EXISTING HANDHOLE TO BE REMOVED
- EXISTING PEDESTRIAN SIGNAL HEAD TO BE REMOVED
- EXISTING PEDESTRIAN PUSHBUTTON TO BE REMOVED
- EMERGENCY VEHICLE LIGHT DETECTOR TO BE REMOVED
- CONFIRMATION BEACON TO BE REMOVED
- EXISTING HEAVY-DUTY HANDHOLE TO BE REMOVED
- EXISTING STEEL MAST ARM POLE AND FOUNDATION TO BE REMOVED

FILE NAME = ...\\fin...dwg\690_5_ssg88a_ohio.dgn	USER NAME = _USER_	DESIGNED -	REVISED -	STATE OF ILLINOIS DEPARTMENT OF TRANSPORTATION	EXISTING TRAFFIC SIGNAL EQUIPMENT TO BE REMOVED OHIO STREET	F.A. RTE.	SECTION	COUNTY	TOTAL SHEETS	SHEET NO.	
	PLOT SCALE = \$SCALE\$	DRAWN BAH	REVISED -					KANE	44	29	
	PLOT DATE = 12/17/2009	CHECKED APS	REVISED -			SCALE:	SHEET NO. OF SHEETS STA. TO STA.	CONTRACT NO. 63300			
		DATE -	REVISED -			FED. ROAD DIST. NO. [ILLINOIS] FED. AID PROJECT					