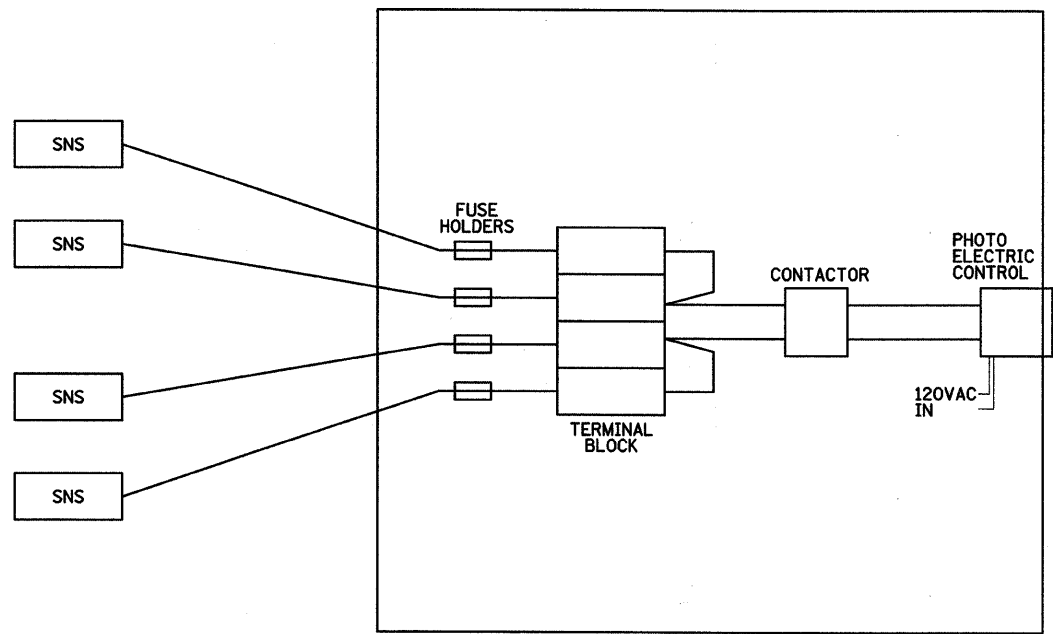
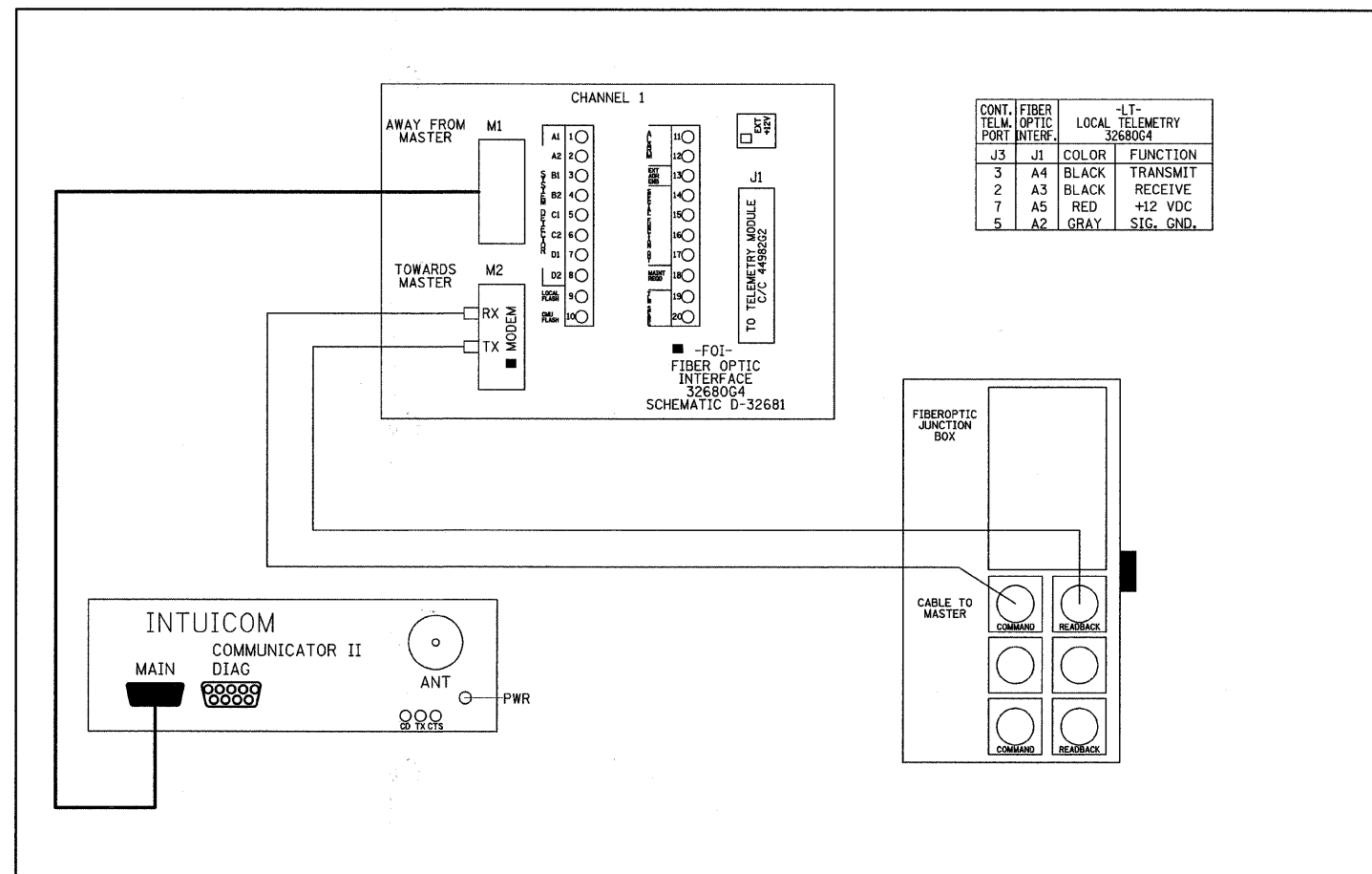


PLAN SURVEYED _____ DATE _____
 PLOTTED _____ BY _____
 NOTE BOOK _____ CHECKED _____
 NO. _____ STRUCTURE _____ CADD FILE NAME _____



LED STREET NAME SIGNS - PHOTOCELL WIRING DETAIL

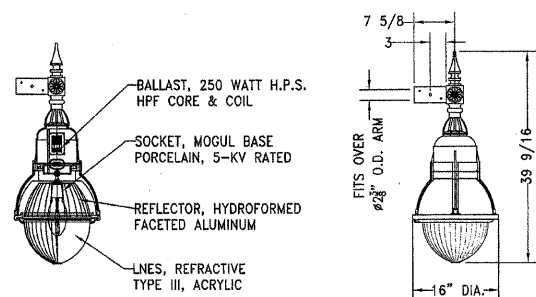


WIRING DETAIL FOR COMBINATION OF WIRELESS AND FIBER OPTIC INTERCONNECT SYSTEMS

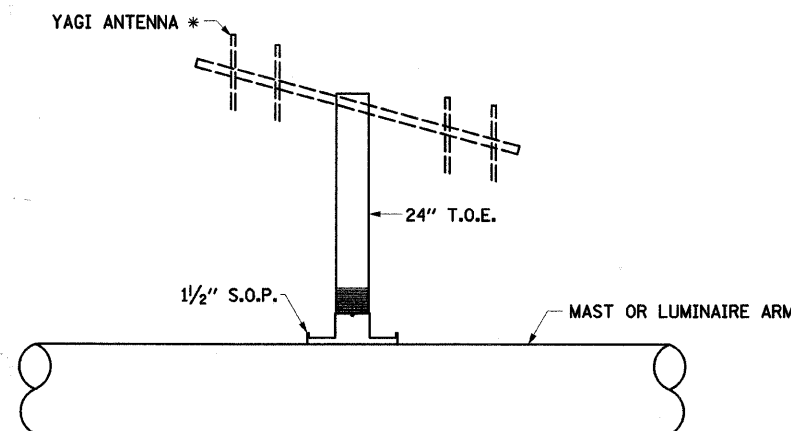
PROFILE SURVEYED _____ DATE _____
 PLOTTED _____ BY _____
 NOTE BOOK _____ CHECKED _____
 NO. _____ STRUCTURE _____ NOTATIONS CHK'D _____

NOTES:

- LUMINAIRE SHALL BE A MODEL AL-32000 LUMINAIRE, ARM END MOUNTED AS MANUFACTURED BY BEACON PRODUCTS OR AN EQUAL APPROVED BY THE CITY OF AURORA.
- ALL CAST ALUMINUM PARTS ARE COPPER FREE ALLOY A356. ALL EXTRUDED ALUMINUM PARTS ARE ALLOY 6051-T6.
- LENS: ACRYLIC PRISMATIC TYPE III ACRYLIC.
- OPTICS: HYDROFORMED FACETED REFLECTOR WITH LIGHT SOURCE: 250 WATT H.P.S., ED-28 LAMP, (BY OTHERS). BALLAST: 250 WATT H.P.S., HPF CORE & COIL.
- VOLTAGE: 240 VOLTS HZ:60.
- FIXTURE SHALL BE NRTL LISTED FOR WET LOCATION.
- FASTNERS: ALL FASTNERS ARE STAINLESS STEEL (TAMPER RESISTANT OPTIONAL, SPANNER HD (SHAKE EYE) SPECIAL TOOL REQUIRED, NOT PROVIDED).
- FINISH: BEACOTE III POLYESTHER POWDER COAT ELECTROSTATICALLY APPLIED AND THERMOCLURED. COLOR (SPECIFY).



AL-32000 LUMINAIRE, ARM END MOUNTED



WIRELESS ANTENNA MOUNTING DETAIL

* OR EQUAL APPROVED BY THE CITY OF AURORA.

MISCELLANEOUS DETAILS

FILE NAME = ...trans\fin.dwg\690_5_det05.dgn

USER NAME = _USER_
 PLOT SCALE = #SCALE#
 PLOT DATE = 12/17/2009

DESIGNED -
 DRAWN BAH
 CHECKED APS
 DATE -

REVISED -
 REVISED -
 REVISED -
 REVISED -

STATE OF ILLINOIS
 DEPARTMENT OF TRANSPORTATION

MISCELLANEOUS DETAILS

SCALE: SHEET NO. OF SHEETS STA. TO STA.

F.A. RTE.	SECTION	COUNTY	TOTAL SHEETS	SHEET NO.
	08-00270-00-TL	KANE	44	43
CONTRACT NO. 63300				
FED. ROAD DIST. NO. ILLINOIS FED. AID PROJECT				