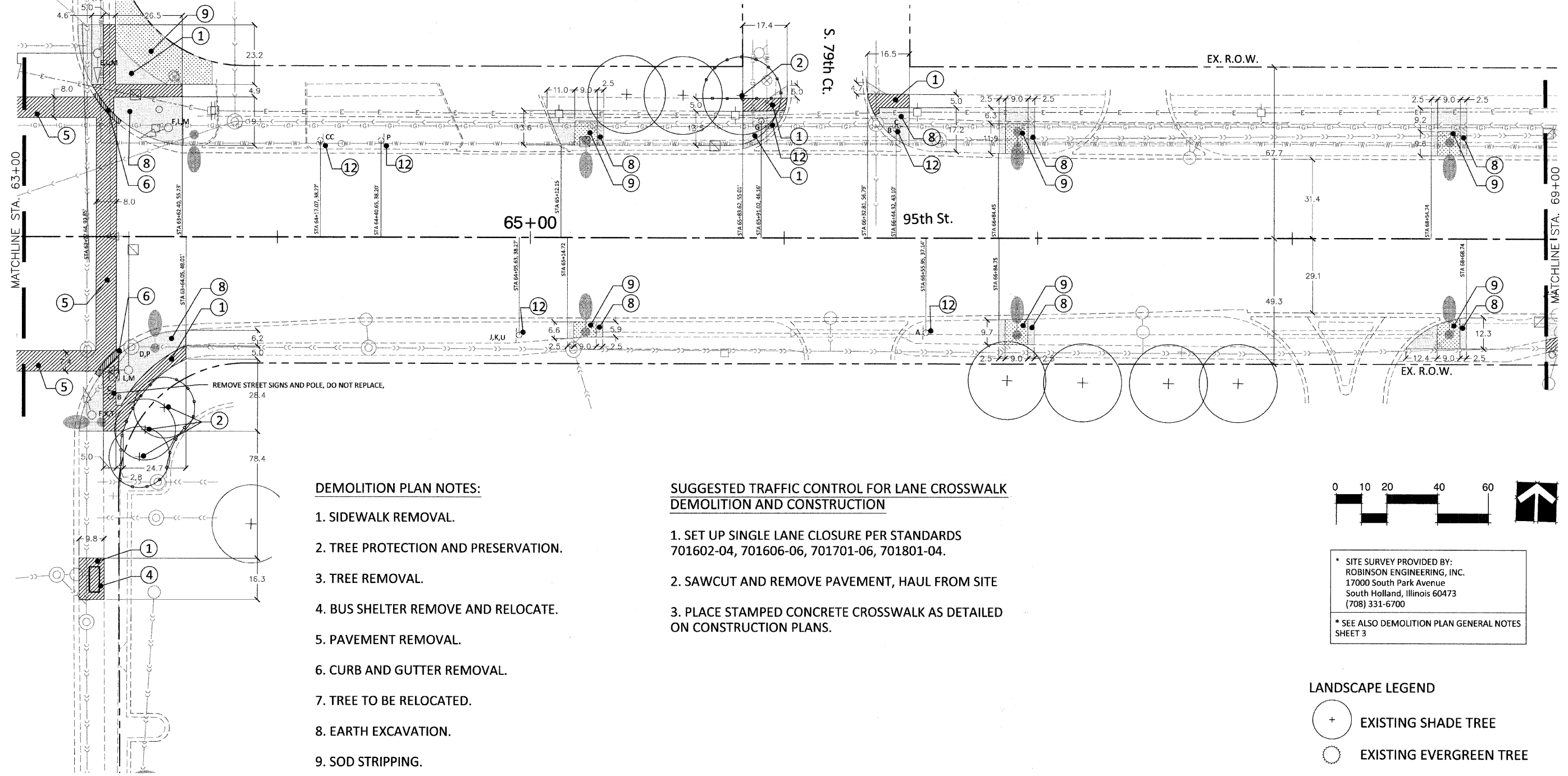


SECTION 1, TOWNSHIP 37, RANGE 12  
SECTION 12, TOWNSHIP 37, RANGE 12

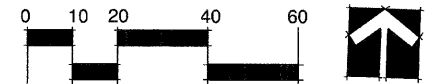


**DEMOLITION PLAN NOTES:**

1. SIDEWALK REMOVAL.
2. TREE PROTECTION AND PRESERVATION.
3. TREE REMOVAL.
4. BUS SHELTER REMOVE AND RELOCATE.
5. PAVEMENT REMOVAL.
6. CURB AND GUTTER REMOVAL.
7. TREE TO BE RELOCATED.
8. EARTH EXCAVATION.
9. SOD STRIPPING.
10. MANHOLE TO BE ADJUSTED.
11. VALVE BOX TO BE ADJUSTED.
12. STREET SIGN TO BE REMOVED.

**SUGGESTED TRAFFIC CONTROL FOR LANE CROSSWALK DEMOLITION AND CONSTRUCTION**

1. SET UP SINGLE LANE CLOSURE PER STANDARDS 701602-04, 701606-06, 701701-06, 701801-04.
2. SAWCUT AND REMOVE PAVEMENT, HAUL FROM SITE
3. PLACE STAMPED CONCRETE CROSSWALK AS DETAILED ON CONSTRUCTION PLANS.



\* SITE SURVEY PROVIDED BY:  
ROBINSON ENGINEERING, INC.  
17000 South Park Avenue  
South Holland, Illinois 60473  
(708) 331-6700

\* SEE ALSO DEMOLITION PLAN GENERAL NOTES SHEET 3

**LANDSCAPE LEGEND**

- EXISTING SHADE TREE
- EXISTING EVERGREEN TREE
- TREE PROTECTION FENCING

**STREET SIGN LEGEND**

- \*SEE SHEET 5 FOR EXISTING SIGN SCHEDULE
- J, EE SIGN ON FREE STANDING POLE
  - R, JJ SIGN MOUNTED ON TRAFFIC LIGHT POLE OR STREET LIGHT POLE

FILE NAME = prt\_existing conditions - IDOT P15

PLANNING  
RESOURCES INC.  
402 West Jackson Street  
Chicago, Illinois 60601  
PH: 414.644.3700

|                       |                   |                      |
|-----------------------|-------------------|----------------------|
| USER NAME =           | DESIGNED — BCL    | REVISED — 10/30/2009 |
| PLOT SCALE = 1"=20'   | CHECKED — KLG     | REVISED — 11/30/2009 |
| PLOT DATE = 8/21/2009 | DRAWN — BCL/RJA   | REVISED — 12/17/2009 |
|                       | CHECKED — KLG/LMV | REVISED —            |

STATE OF ILLINOIS  
DEPARTMENT OF TRANSPORTATION

EXISTING CONDITIONS/ REMOVAL PLAN

SCALE: 1"=20' SHEET NO. 15 OF 62 SHEETS STA. 63+00 TO STA. 69+00

|                     |                        |                  |                 |              |
|---------------------|------------------------|------------------|-----------------|--------------|
| F.A.P. RTE. 29      | SECTION 09-00056-00-LS | COUNTY COOK      | TOTAL SHEETS 62 | SHEET NO. 15 |
| CONTRACT NO. 63321  |                        |                  |                 |              |
| FED. ROAD DIST. NO. | ILLINOIS               | FED. AID PROJECT | ARA-9003(343)   |              |