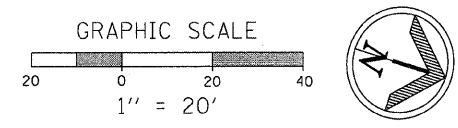
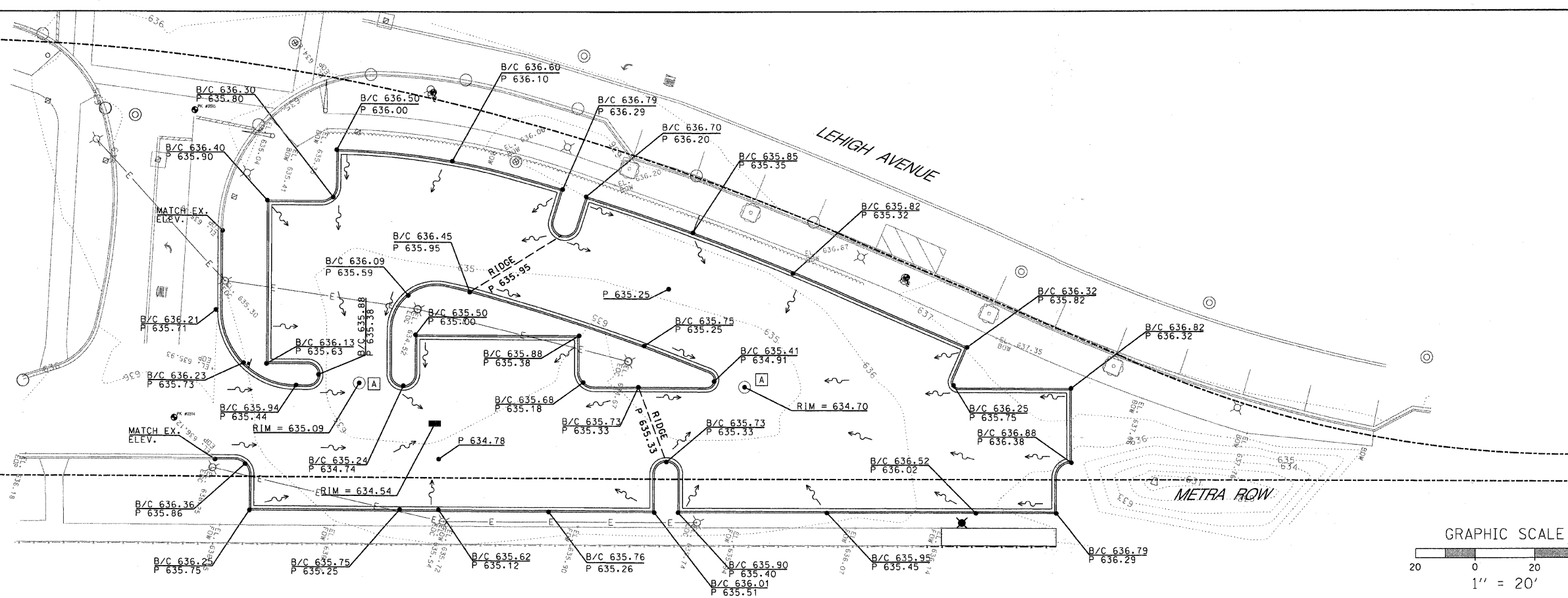
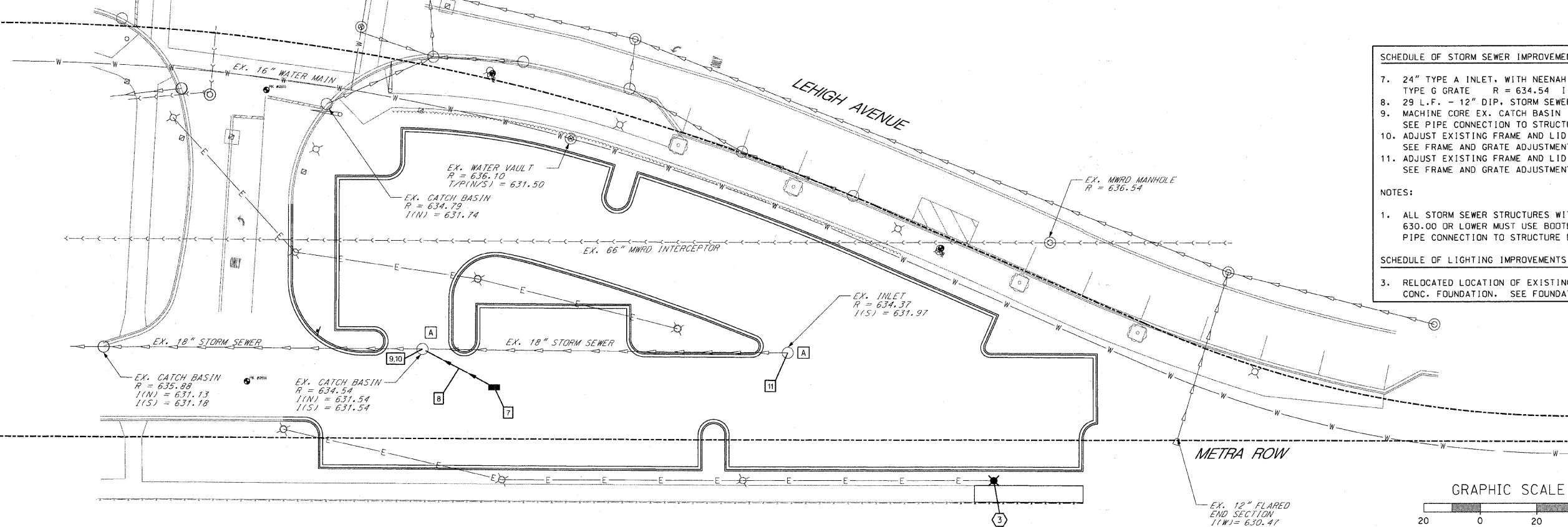


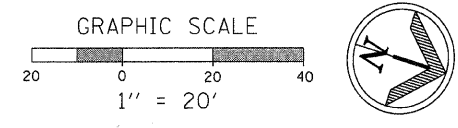
**GRADING PLAN**



**UTILITY PLAN**



- SCHEDULE OF STORM SEWER IMPROVEMENTS**
7. 24" TYPE A INLET, WITH NEENAH R-1713 FRAME AND TYPE G GRATE R = 634.54 [(SW) = 631.80
  8. 29 L.F. - 12" DIP. STORM SEWER @ 0.30%
  9. MACHINE CORE EX. CATCH BASIN (NE) = 631.70  
SEE PIPE CONNECTION TO STRUCTURE DETAIL ON SHEET 20
  10. ADJUST EXISTING FRAME AND LID R = 635.09  
SEE FRAME AND GRATE ADJUSTMENT DETAIL ON SHEET 21
  11. ADJUST EXISTING FRAME AND LID R = 634.70  
SEE FRAME AND GRATE ADJUSTMENT DETAIL ON SHEET 21
- NOTES:**
1. ALL STORM SEWER STRUCTURES WITH PIPE ELEVATIONS OF 630.00 OR LOWER MUST USE BOOTED CONNECTION SEE PIPE CONNECTION TO STRUCTURE DETAIL ON SHEET 20
- SCHEDULE OF LIGHTING IMPROVEMENTS**
3. RELOCATED LOCATION OF EXISTING LIGHT POLE WITH NEW CONC. FOUNDATION. SEE FOUNDATION DETAIL ON SHEET 21



|                               |                 |                 |                             |
|-------------------------------|-----------------|-----------------|-----------------------------|
| <b>PLANS PREPARED BY:</b><br> | SURVEY - DJG    | DESIGNED - DJG  | REVISED - 10/05/09 PER BLRS |
|                               | UTILITIES - JC  | DRAWN - DJG     | REVISED -                   |
|                               | CHECKED - DJG   | CHECKED - LVA   | REVISED -                   |
|                               | DATE - 04-23-09 | DATE - 09-17-09 | REVISED -                   |
|                               |                 |                 |                             |

**VILLAGE OF GLENVIEW  
PROJECT E 08-56**

**SITE GRADING PLAN AND SITE UTILITY PLAN  
WEST LOT NORTH POD PARKING LOT**

|                    |                        |             |                 |                           |
|--------------------|------------------------|-------------|-----------------|---------------------------|
| F.A. RTE. NA       | SECTION 08-00169-00-PK | COUNTY COOK | TOTAL SHEETS 24 | SHEET NO. 11              |
| CONTRACT NO. 63360 |                        |             |                 | ILLINOIS FED. AID PROJECT |

SCALE: 1" = 20' SHEET NO. 11 OF 24 SHEETS