

F.A.U. RTE.	SECTION	COUNTY	TOTAL SHEETS	SHEET NO.
0167	09-00366-00-RS	McHENRY	19	1
FED. ROAD DIST. NO.		ILLINOIS CONTRACT NO. 63380		

FOR INDEX OF SHEETS,
SEE SHEET NO. 2

PROJECT LOCATED IN McHENRY
AND NUNDA TOWNSHIPS.

TRAFFIC DATA

ADT (2007) = 13,600
SPEED LIMIT = RANGES FROM
30 TO 45 MPH

LOCATION 1 - CHARLES J. MILLER ROAD TO IL. RTE 120 - 45 MPH
LOCATION 2 - IL. RTE. 120 TO LINCOLN ROAD - 40 MPH
LOCATION 3 - LINCOLN ROAD TO WEST HOWELL ROAD - 45 MPH
LOCATION 4 - WEST HOWELL ROAD TO BAY ROAD - 45 MPH
LOCATION 5 - BAY ROAD TO ST. JOHNS/JOHNSBURG ROAD - 30 MPH

OMISSIONS

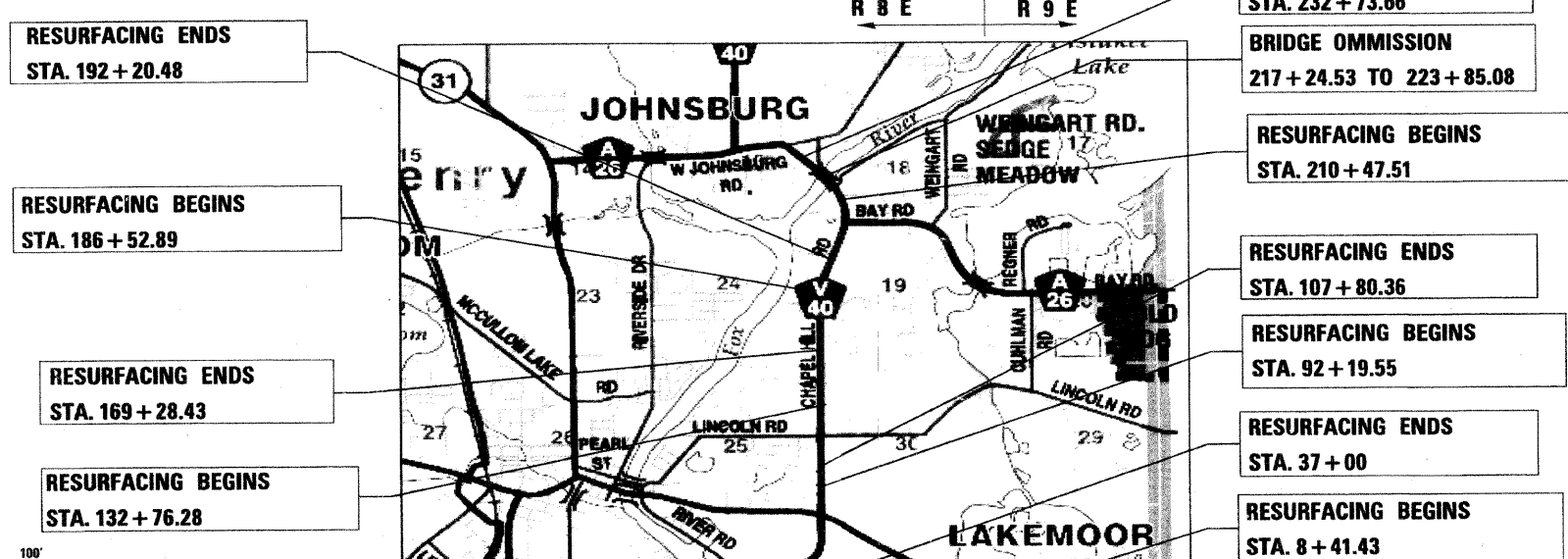
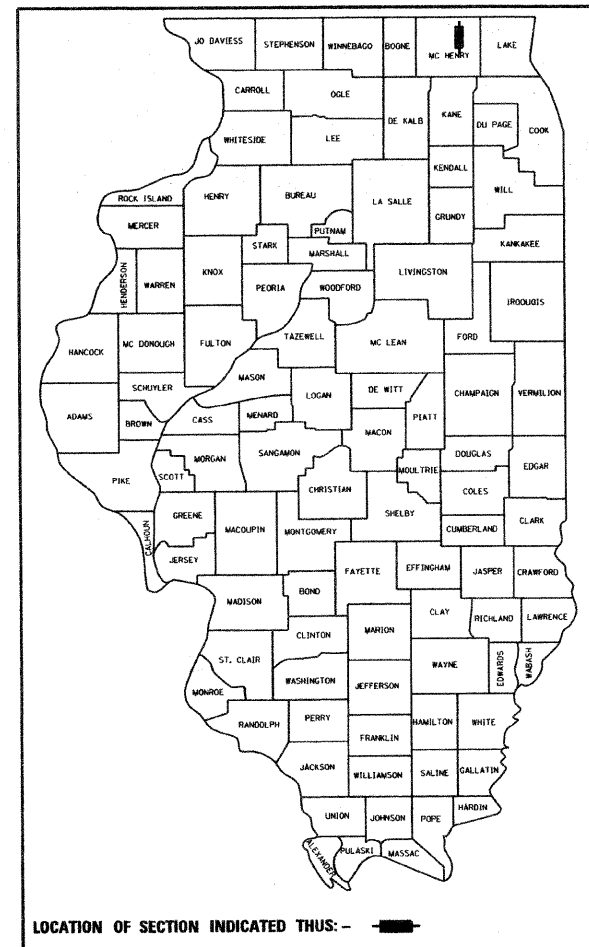
- ① EXIST./PROP. INTERSECTION IMPROVEMENTS FROM STA. 3+00 TO STA. 8+41.43
- ② EXIST. IMPROVEMENTS FROM STA. 37+00 TO STA. 92+19.55
- ③ EXIST./PROP. INTERSECTION IMPROVEMENTS FROM STA. 107+80.36 TO STA. 132+76.28
- ④ EXIST. IMPROVEMENTS FROM STA. 169+28.43 TO STA. 186+52.89
- ⑤ EXIST. INTERSECTION IMPROVEMENTS FROM STA. 192+20.48 TO STA. 210+47.51
- ⑥ EXIST. BRIDGE IMPROVEMENTS FROM STA. 217+24.53 TO STA. 223+85.08
- ⑦ EXIST./PROP. INTERSECTION IMPROVEMENTS FROM STA. 223+73.66 TO STA. 239+04.58

STATE OF ILLINOIS
DEPARTMENT OF TRANSPORTATION
DIVISION OF HIGHWAYS

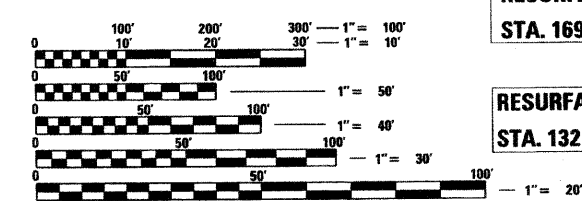
**PLANS FOR PROPOSED
FEDERAL AID PROJECT
(CHAPEL HILL ROAD) FAU ROUTE 167**

CHARLES J. MILLER ROAD (FAU 3860) TO
SOUTH OF JOHNSBURG ROAD (FAU 168)

**RESURFACING
SECTION NO.: 09-00366-00-RS
PROJECT NO.: ARA-9003(475)
JOB NO.: C-91-058-10
McHENRY COUNTY**



- RESURFACING ENDS
STA. 232 + 73.66
- BRIDGE OMISSION
217 + 24.53 TO 223 + 85.08
- RESURFACING BEGINS
STA. 210 + 47.51
- RESURFACING ENDS
STA. 107 + 80.36
- RESURFACING BEGINS
STA. 92 + 19.55
- RESURFACING ENDS
STA. 37 + 00
- RESURFACING BEGINS
STA. 8 + 41.43



FULL SIZE PLANS HAVE BEEN PREPARED USING STANDARD
ENGINEERING SCALES. REDUCED SIZED PLANS WILL NOT
CONFORM TO STANDARD SCALES. IN MAKING MEASUREMENTS
ON REDUCED PLANS, THE ABOVE SCALES MAY BE USED.

J.U.L.I.E.
JOINT UTILITY LOCATION INFORMATION
FOR EXCAVATION 1-800-892-0123
OR 811

LOCATION MAP
(NOT TO SCALE)

McHENRY AND NUNDA TOWNSHIPS
GROSS LENGTH OF PROJECT = 22,432.23 LF
= 4.25 MILES (INTERMITTENT SECTIONS)
NET LENGTH OF IMPROVEMENT = 10,204.72 LF = 1.93 MILES



W.R.D. Exp. 11/30/2011

STATE OF ILLINOIS
DEPARTMENT OF TRANSPORTATION
DIVISION OF HIGHWAYS

APPROVED DECEMBER 2 20 09
Joseph P. Korpalski, Jr.
McHENRY COUNTY, COUNTY ENGINEER

PASSED DECEMBER 3 2009
Chet Chester
DISTRICT 1 ENGINEER OF LOCAL ROADS & STREETS

RELEASING FOR BID
BASED ON LIMITED
REVIEW DECEMBER 4, 20 09
Dina M. O'Keefe
DEPUTY DIRECTOR OF HIGHWAYS, REGION 1 ENGINEER

**PRINTED BY THE AUTHORITY
OF THE STATE OF ILLINOIS**

CONTRACT NO. 63380

IDOT ASSOCIATE FIELD ENGINEER KEVIN STALLWORTH, P.E. 847-705-4169

INDEX OF SHEETS

<u>SHEET NO.</u>	<u>TITLE</u>
1	COVER SHEET
2	INDEX OF SHEETS, STANDARDS, AND GENERAL NOTES
3	SUMMARY OF QUANTITIES AND DRIVEWAY DETAIL
4	TYPICAL SECTIONS AND HMA MIXTURE REQUIREMENTS
5-14	PROPOSED PLAN
15	BD-32 BUTT JOINTS AND HMA TAPER DETAILS
16	TC-10 TRAFFIC CONTROL AND PROTECTION FOR SIDE ROADS, INTERSECTIONS, AND DRIVEWAYS
17	TC-13 DISTRICT ONE TYPICAL PAVEMENT MARKINGS
18	TC-18 SIGNING FOR FLAGGING OPERATIONS AT WORK ZONE OPENING
19	TC-22 ARTERIAL ROAD INFORMATION SIGN

LISTS OF STANDARDS

000001-05	ABBREVIATIONS, SYMBOLS AND PATTERN
442201-03	CLASS C AND D PATCHES
482011-03	HMA SHLD. STRIPS/SHLDS. WITH RESURFACING OR WIDENING AND RESURFACING PROJECTS
701011-02	OFF-ROAD MOVING OPERATIONS, 2L, 2W DAY ONLY
701201-03	LANE CLOSURE, 2L, 2W, DAY ONLY, FOR SPEED >=45 MPH
701306-02	LANE CLOSURE, 2L, 2W, SLOW MOVING OPERATIONS DAY ONLY, FOR SPEEDS >= 45 MPH
701311-03	LANE CLOSURE, 2L, 2W, MOVING OPERATIONS-DAY ONLY
701501-05	URBAN LANE CLOSURE, 2L 2W, UNDIVIDED
701901-01	TRAFFIC CONTROL DEVICES
781001-03	TYPICAL APPLICATIONS RAISED REFLECTIVE PAVEMENT MARKERS
BLR 24-2	MAILBOX TURNOUTS FOR LOCAL ROADS

GENERAL NOTES

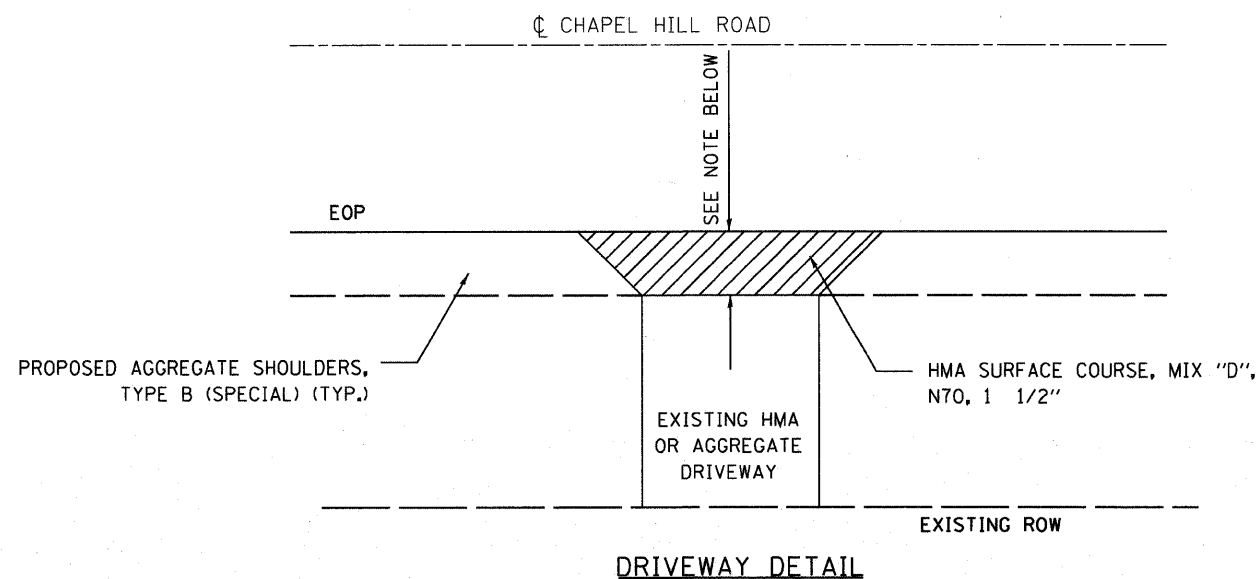
- ALL CONSTRUCTION SHALL BE DONE IN ACCORDANCE WITH THE DETAILS IN THE PLANS, THE SPECIAL PROVISIONS INCLUDED IN THE CONTRACT DOCUMENTS, AND THE LATEST EDITION OF THE FOLLOWING STATE OF ILLINOIS SPECIFICATIONS: "THE STANDARD SPECIFICATIONS FOR ROAD AND BRIDGE CONSTRUCTION" (REFERRED TO AS THE "STANDARD SPECIFICATIONS"), THE "SUPPLEMENTAL SPECIFICATIONS AND RECURRING SPECIAL PROVISIONS", THE "MANUAL ON UNIFORM TRAFFIC CONTROL DEVICES FOR STREETS AND HIGHWAYS" AND THE "MANUAL OF TEST PROCEDURES FOR MATERIALS".
- BARRICADES:** THE CONTRACTOR SHALL PROVIDE AND INSTALL TWO (2) WEIGHTED SAND BAGS ON EACH TYPE I OR TYPE II BARRICADE USED FOR - ONE (1) WEIGHTED SAND BAG ACROSS EACH BOTTOM RAIL.
- ANY SIGNS THAT ARE IN CONFLICT WITH THE PROPOSED CONSTRUCTION SHALL BE REMOVED AND REPLACED IN ACCORDANCE WITH COUNTY STANDARDS AND INCLUDED IN THE COST OF THE CONTRACT.
- THE CONTRACTOR SHALL BE RESPONSIBLE FOR THE PROTECTION OF ALL UNDERGROUND OR SURFACE UTILITIES EVEN THOUGH THEY MAY NOT BE SHOWN ON THE PLANS. ANY UTILITY THAT IS DAMAGED DURING CONSTRUCTION SHALL BE REPAIRED OR REPLACED AT THE CONTRACTOR'S EXPENSE TO THE SATISFACTION OF THE ENGINEER OR UTILITY COMPANY.
- UTILITY LOCATIONS HAVE NOT BEEN SHOWN ON THE PLANS. THE CONTRACTOR SHALL CALL "J.U.L.I.E." AT 800-892-0123 OR 811 FOR FIELD LOCATIONS OF BURIED ELECTRIC, PHONE, AND GAS FACILITIES PRIOR TO BEGINNING CONSTRUCTION. (48-HOUR NOTIFICATION REQUIRED)
- THE CONTRACTOR SHALL COORDINATE CONSTRUCTION ACTIVITIES WITH UTILITY COMPANIES AND THE ENGINEER.
- THE CONTRACTOR SHALL NOTIFY IDOT BUREAU OF MATERIALS (PHONE (847)-705-4337) AT LEAST 24 HOURS PRIOR TO THE PLACEMENT OF HMA OR CONCRETE.
- SAW CUTTING OF PAVEMENTS, SHOULDERS, ETC. SHALL BE TO FULL DEPTH EXCEPT SIDEROADS AND DRIVEWAYS (1/2" SAW CUT) AND SHALL RESULT IN A CLEAN, STRAIGHT EDGE ON THE PORTION REMAINING. ALL SAWCUTTING SHALL BE CONSIDERED INCLUDED IN THE COST OF THE CONTRACT.
- ALL MAILBOXES IMPACTED AS PART OF THE PROJECT, PER SECTION 107.20 OF THE IDOT STANDARD SPECIFICATIONS, SHALL BE RELOCATED AND WILL NOT BE PAID FOR SEPARATELY, BUT SHALL BE CONSIDERED AS INCLUDED IN THE COST OF THE CONTRACT.
- THE CONTRACTOR SHALL MAINTAIN ACCESS TO RESIDENTS DRIVEWAY AT ALL TIMES.

- THE CONTRACTOR SHALL UTILIZE A MECHANICAL SWEEPER TO CLEAN STREETS AFFECTED BY CONTRACTOR'S OPERATIONS, INCLUDING HAUL ROUTE, AT ALL TIMES. THIS WORK SHALL BE INCLUDED IN THE COST OF CONSTRUCTION.
- THE CONTRACTOR SHALL BE RESPONSIBLE FOR DISPOSING OF ALL SURPLUS MATERIALS RELATED TO THE JOB AFTER COMPLETING THE PAVING PROJECT.
- THE THERMOPLASTIC PAVEMENT MARKINGS MAY BE ADJUSTED FROM THE PLANS BY THE ENGINEER. THERMOPLASTIC PAVEMENT MARKINGS SHALL BE INSTALLED BY HAND-OPERATED METHOD ONLY.
- CONTRACTOR SHALL INSTALL NOTCHED WEDGE LONGITUDINAL JOINTS IN ACCORDANCE TO SUPPLEMENTAL SPECIFICATIONS SECTION 406. A MINIMUM OF 600 POUNDS COMPACTION IS REQUIRED.
- CONTRACTOR SHALL KEEP ONE LANE OF TRAFFIC OPEN AT ALL TIMES.
- MAILBOX TURNOUTS SHALL BE PAVED IN ACCORDANCE WITH STANDARD BLR 24-2 OR TO A DIMENSION CONFORMING TO EXISTING CONDITIONS WITH THE APPROVAL OF THE ENGINEER. HMA MAILBOX TURNOUT SHALL NOT BE MEASURED FOR PAYMENT, BUT RESURFACING WITH HMA MIX SHALL BE PAID FOR AT THE CONTRACT UNIT PRICE PER TON.
- DRIVEWAY TURNOUTS SHALL BE CONSTRUCTED TO A THREE (3) FOOT WIDTH OR WHATEVER DIMENSION IS NECESSARY TO CREATE AND MAINTAIN SATISFACTORY RIDING CONDITION. THESE GUIDELINES ARE VARIABLE ONLY WITH APPROVAL OF THE ENGINEER. HMA DRIVEWAY TURNOUTS SHALL NOT BE MEASURED FOR PAYMENT, BUT THE HMA MIX USED FOR RESURFACING SHALL BE PAID FOR AT THE CONTRACT UNIT PRICE PER TON.

FILE NAME =	USER NAME = *USER*	DESIGNED -	REVISED -	McHENRY COUNTY DIVISION OF TRANSPORTATION CHAPEL HILL ROAD IMPROVEMENTS	INDEX OF SHEETS, STATE STANDARDS, AND GENERAL NOTES				F.A.U. RTE.	SECTION	COUNTY	TOTAL SHEETS	SHEET NO.
FILE#		DRAWN -	REVISED -		0167	09-00366-00-RS	McHENRY	19	2				
	PLOT SCALE = *SCALE*	CHECKED -	REVISED -		CONTRACT NO. 63380								
	PLOT DATE = *DATE*	DATE -	REVISED -		SCALE: N.T.S	SHEET NO. OF SHEETS	STA.	TO STA.	FED. ROAD DIST. NO.	ILLINOIS FED. AID PROJECT			

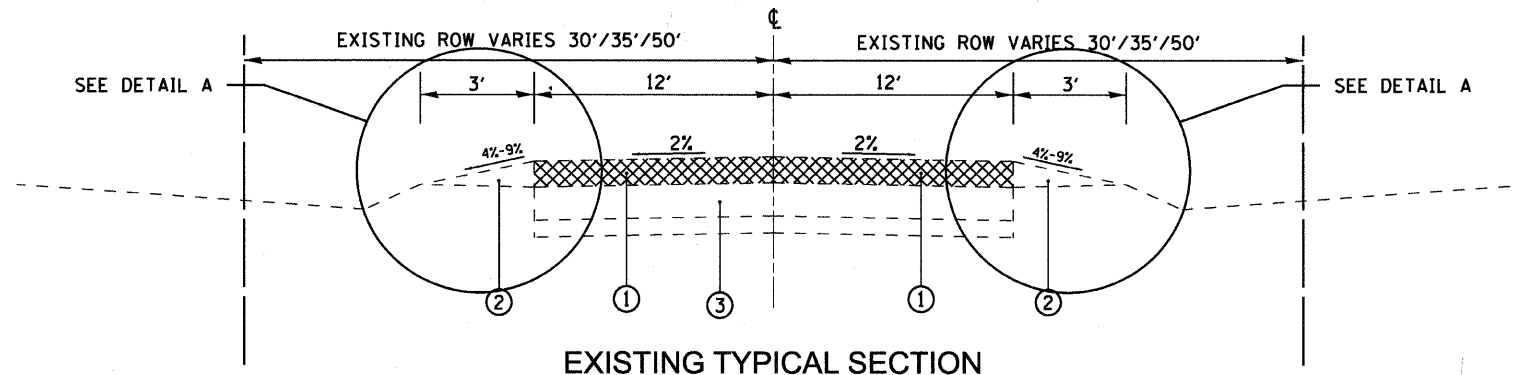
SUMMARY OF QUANTITIES				TOTAL	LOCATION 1	LOCATION 2	LOCATION 3	LOCATION 4	LOCATION 5
CODE NO.	ITEM DESCRIPTION	UNIT	QUANTITY	(1000)	MILLER RD	IL RTE 120-	LINCOLN RD	W HOWELL RD	BAY RD - ST
					-IL RTE 120	LINCOLN RD	-W HOWELL RD	-BAY RD	JOHNS RD
40600100	BITUMINOUS MATERIALS (PRIME COAT)	GALLON	5,149		1,364	962	1,662	255	906
40600300	AGGREGATE PRIME COAT	TON	64		17	12	21	3	11
40600635	LEVELING BINDER (MACHINE METHOD), N70	TON	32		8	6	10	2	6
40600895	CONSTRUCTING TEST STRIP	EACH	2		0	0	2	0	0
40600982	HOT-MIX ASPHALT SURFACE REMOVAL-BUTT JOINT	SQ YD	456		116	73	73	37	157
40603085	HOT-MIX ASPHALT BINDER COURSE, IL-19.0, N70	TON	4,056		1,074	758	1,309	201	714
40603340	HOT-MIX ASPHALT SURFACE COURSE, MIX "D", N70	TON	2,704		716	505	873	134	476
44000196	HOT-MIX ASPHALT SURFACE REMOVAL, SPECIAL	SQ YD	33,864		8,524	6,014	10,390	1,593	5,663
44201721	CLASS D PATCHES, TYPE III, 6 INCH	SQ YD	16		0	0	0	16	0
44201723	CLASS D PATCHES, TYPE IV, 6 INCH	SQ YD	306		85	60	104	0	57
67100100	MOBILIZATION	L SUM	1		0.2	0.2	0.2	0.2	0.2
70100450	TRAFFIC CONTROL&PROTECTION,STANDARD 701201	L SUM	1		0.2	0.2	0.2	0.2	0.2
70100460	TRAFFIC CONTROL&PROTECTION,STANDARD 701306	L SUM	1		0.2	0.2	0.2	0.2	0.2
70102620	TRAFFIC CONTROL&PROTECTION,STANDARD 701501	L SUM	1		0.2	0.2	0.2	0.2	0.2
* 78000200	THERMOPLASTIC PAVEMENT MARKING - LINE 4"	FOOT	33,610		11,034	6,154	9,539	1,283	5,600
* 78000400	THERMOPLASTIC PAVEMENT MARKING - LINE 6"	FOOT	655		188	48	419	0	0
* 78000600	THERMOPLASTIC PAVEMENT MARKING - LINE 12"	FOOT	90		0	90	0	0	0
* 78000650	THERMOPLASTIC PAVEMENT MARKING - LINE 24"	FOOT	372		133	55	57	17	110
* 78300200	RAISED REFLECTIVE PAVEMENT MARKER REMOVAL	EACH	38		0	36	0	2	0
XX002870	AGGREGATE SHOULDERS, TYPE B (SPECIAL)	SQ YD	2,965		545	635	1,540	245	0
X0322256	TEMPORARY INFORMATION SIGNING	SQ FT	110		22	22	22	22	22
X7030200	SHORT-TERM PAVEMENT MARKING (SPECIAL)	FOOT	7,406		2,079	1,119	2,656	413	1,139

* SPECIALTY ITEMS



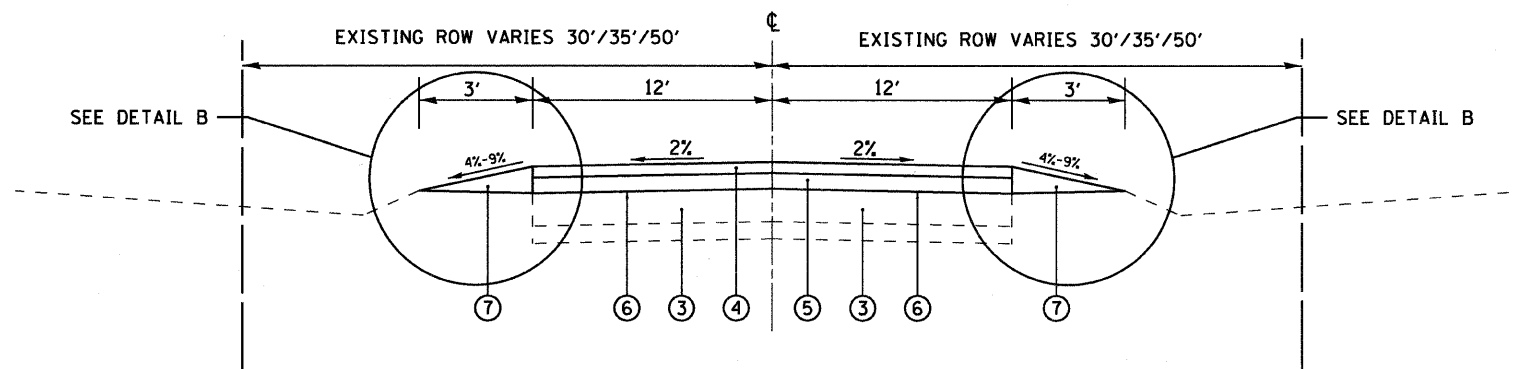
NOTE: 3' MAX. WHEN MATCHING EXISTING DRIVEWAY OR WHATEVER DIMENSION IS NECESSARY TO CREATE AND MAINTAIN A SATISFACTORY RIDING CONDITION. VARIABLE DIMENSIONS ARE SUBJECT TO ENGINEER APPROVAL.

FILE NAME =	USER NAME = *USER*	DESIGNED -	REVISED -	McHENRY COUNTY DIVISION OF TRANSPORTATION CHAPEL HILL ROAD IMPROVEMENTS	SUMMARY OF QUANTITIES AND DRIVEWAY DETAIL			F.A.J. RTE.	SECTION	COUNTY	TOTAL SHEETS	SHEET NO.		
#FILEL*		DRAWN -	REVISED -		SCALE: 1"=50'	SHEET NO.	OF SHEETS	STA.	TO STA.	0167	09-00366-00-RS	McHENRY	19	3
		CHECKED -	REVISED -								CONTRACT NO. 63380			
		DATE -	REVISED -		FED. ROAD DIST. NO. [ILLINOIS] FED. AID PROJECT									



EXISTING TYPICAL SECTION
CHAPEL HILL ROAD

STA. 8+41.43 TO STA. 37+00 (CORRUGATED BITUMINOUS SHOULDERS) (SEE DETAIL A)
 STA. 92+19.55 TO STA. 107+80.36 (BITUMINOUS SHOULDERS) (SEE DETAIL A)
 STA. 132+76.28 TO STA. 169+28.43
 STA. 186+52.89 TO STA. 192+20.48
 STA. 210+47.51 TO STA. 232+73.66



PROPOSED TYPICAL SECTION
CHAPEL HILL ROAD

STA. 8+41.43 TO STA. 37+00 (BITUMINOUS SHOULDERS) (SEE DETAIL B)
 STA. 92+19.55 TO STA. 107+80.36 (BITUMINOUS SHOULDERS) (SEE DETAIL B)
 STA. 132+76.28 TO STA. 169+28.43
 STA. 186+52.89 TO STA. 192+20.48
 STA. 210+47.51 TO STA. 232+73.66

LEGEND

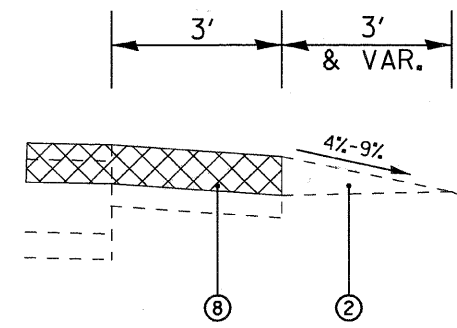
- ① HOT-MIX ASPHALT SURFACE REMOVAL, (SPECIAL), 3 3/4"
- ② EXISTING AGGREGATE SHOULDERS/BITUMINOUS SHOULDERS
- ③ EXISTING HMA BASE COURSE
- ④ PROPOSED HOT-MIX ASPHALT SURFACE COURSE, MIX D, N70, 1 1/2"
- ⑤ PROPOSED HOT-MIX ASPHALT BINDER COURSE, IL-19.0, N70, 2 1/4"
- ⑥ PROPOSED BITUMINOUS MATERIALS (PRIME COAT) AND AGGREGATE (PRIME COAT)
- ⑦ PROPOSED AGGREGATE SHOULDERS, TYPE B, (SPECIAL)
- ⑧ EXISTING CORRUGATED SHOULDERS/BITUMINOUS SHOULDERS

NOTE:
 PROPOSED LEVELING BINDER (MACHINE METHOD), N70 (AS NECESSARY FOR SLOPE CORRECTION, 3/4" MINIMUM)

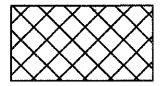
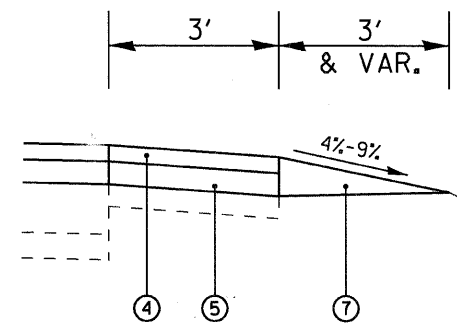
OMISSIONS

- EXIST./PROP. INTERSECTION IMPROVEMENTS FROM STA. 3+00 TO STA. 8+41.43
- EXIST. IMPROVEMENTS FROM STA. 37+00 TO STA. 92+19.55
- EXIST./PROP. INTERSECTION IMPROVEMENTS FROM STA. 107+80.36 TO STA. 132+76.28
- EXIST. IMPROVEMENTS FROM STA. 169+28.43 TO STA. 186+52.89
- EXIST. INTERSECTION IMPROVEMENTS FROM STA. 192+20.48 TO STA. 210+47.51
- EXIST. BRIDGE FROM STA. 217+24.53 TO STA. 223+85.08
- EXIST./PROP. INTERSECTION IMPROVEMENTS FROM STA. 223+73.66 TO STA. 239+04.58

DETAIL A



DETAIL B



PROPOSED HOT-MIX ASPHALT SURFACE REMOVAL, (SPECIAL), 3 3/4"

NOTE: CONTRACTOR SHALL MILL BEFORE PATCHING.

HOT-MIX ASPHALT MIXTURE REQUIREMENTS

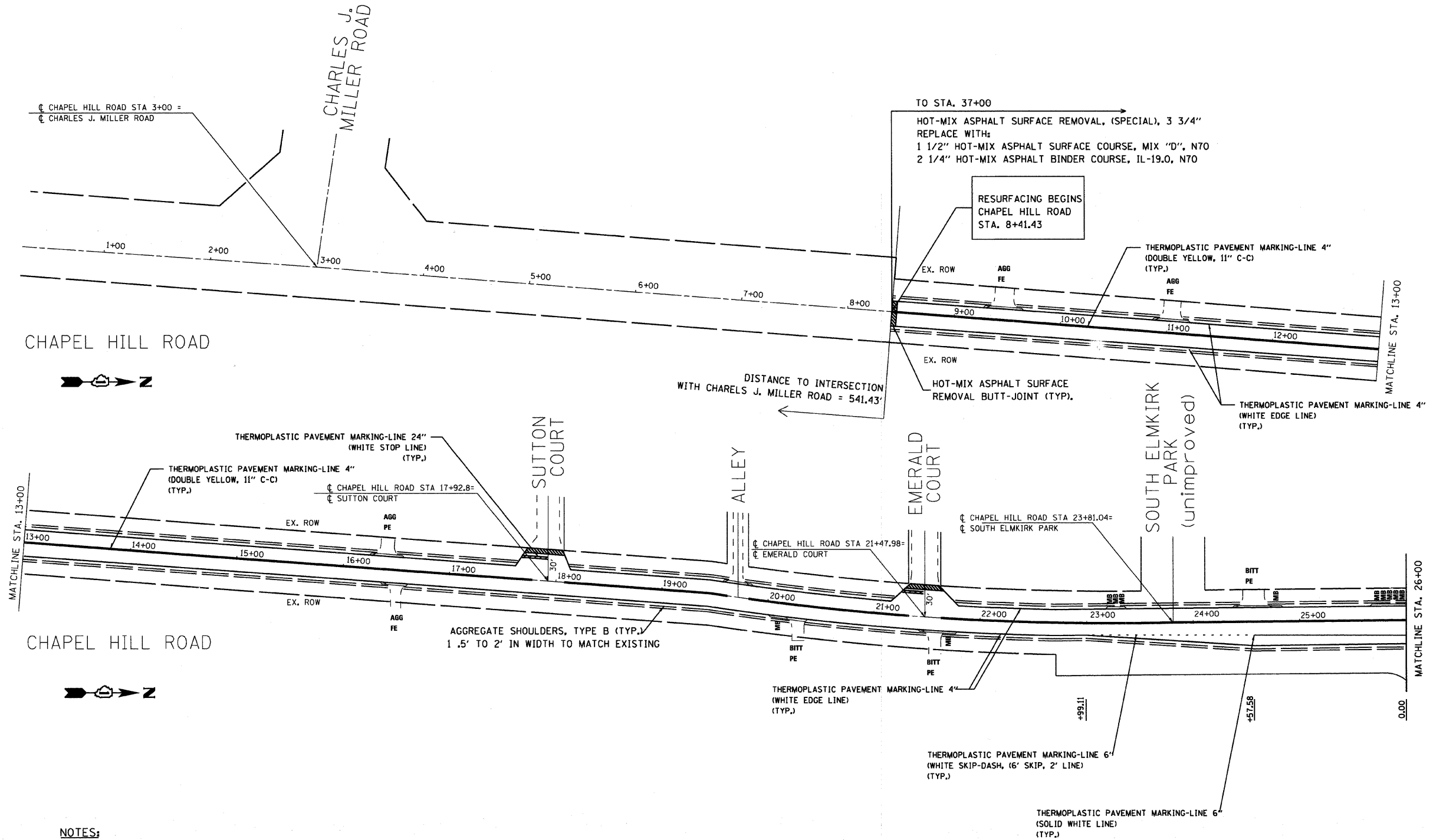
MIXTURE TYPE	AIR VOIDS @ NODES
PAVEMENT RESURFACING:	
HOT-MIX ASPHALT SURFACE COURSE, MIX "D", N70 (IL 9.5 mm)	4% @ 70 GYR.
HOT-MIX ASPHALT BINDER COURSE, IL-19.0, N70	4% @ 70 GYR.
SLOPE CORRECTION:	
LEVELING BINDER (MACHINE METHOD), N70 (IL 9.5 mm)	4% @ 70 GYR.
PATCHING:	
CLASS D PATCHES (HMA BINDER IL-19mm)	4% @ 70 GYR.

THE UNIT WEIGHT USED TO CALCULATE ALL HMA SURFACE MIXTURE QUANTITIES IS 112 LBS/SO YD/IN.

THE "AC TYPE" FOR POLYMERIZED HMA MIXES SHALL BE "SBS/SBR PG70-22" AND NON-POLYMERIZED HMA. THE "AC TYPE" SHALL BE "PG 64-22 UNLESS MODIFIED BY DISTRICT ONE SPECIAL PROVISIONS. FOR "PERCENT OF RAP" SEE DISTRICT ONE SPECIAL PROVISIONS.

OMISSIONS

① Exist./Prop. Intersection Improvements from Sta. 3+00 to Sta. 8+41.43



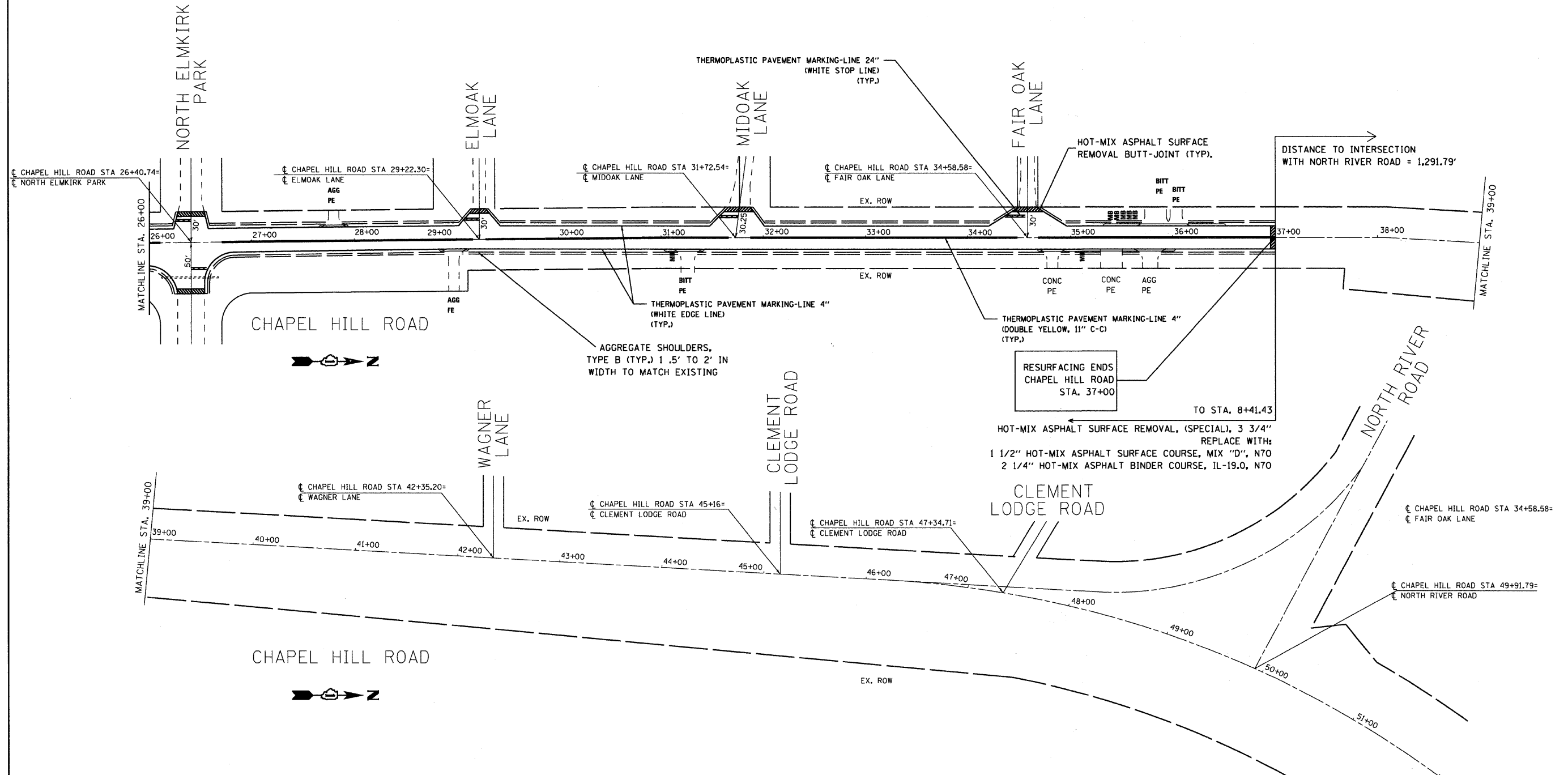
NOTES:

- 1) FOR PAVEMENT MARKING DETAILS, FOLLOW DISTRICT 1 STANDARD TC-13 "DISTRICT ONE TYPICAL PAVEMENT MARKINGS", WHERE APPLICABLE.
- 2) SIDE STREET PAVEMENT TO EXTEND TO RIGHT OF WAY OF CHAPEL HILL ROAD BASED ON CURRENT CONDITION OF SIDE STREET SIGHT OF WAYS.

FILE NAME =	USER NAME = #USER#	DESIGNED -	REVISED -	McHENRY COUNTY DIVISION OF TRANSPORTATION CHAPEL HILL ROAD IMPROVEMENTS	PROPOSED PLAN			F.A.U. RTE.	SECTION	COUNTY	TOTAL SHEETS	SHEET NO.	
*FILEL#		DRAWN -	REVISED -		SCALE: 1" = 50'	SHEET NO. 1 OF 10 SHEETS	STA. 1+00 TO STA. 26+00	0167	09-00366-00-RS	McHENRY	19	5	
		CHECKED -	REVISED -										
		DATE -	REVISED -					FED. ROAD DIST. NO.	ILLINOIS	FED. AID PROJECT			CONTRACT NO. 63380

OMISSIONS

② Exist. Improvements from Sta. 37+00 to Sta. 92+19.55



NOTES:

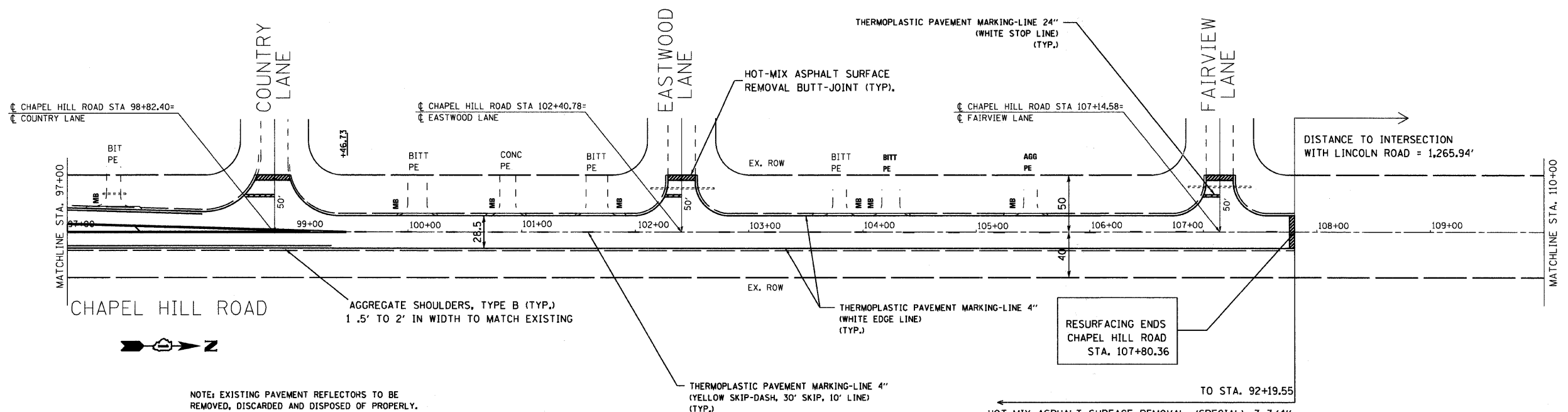
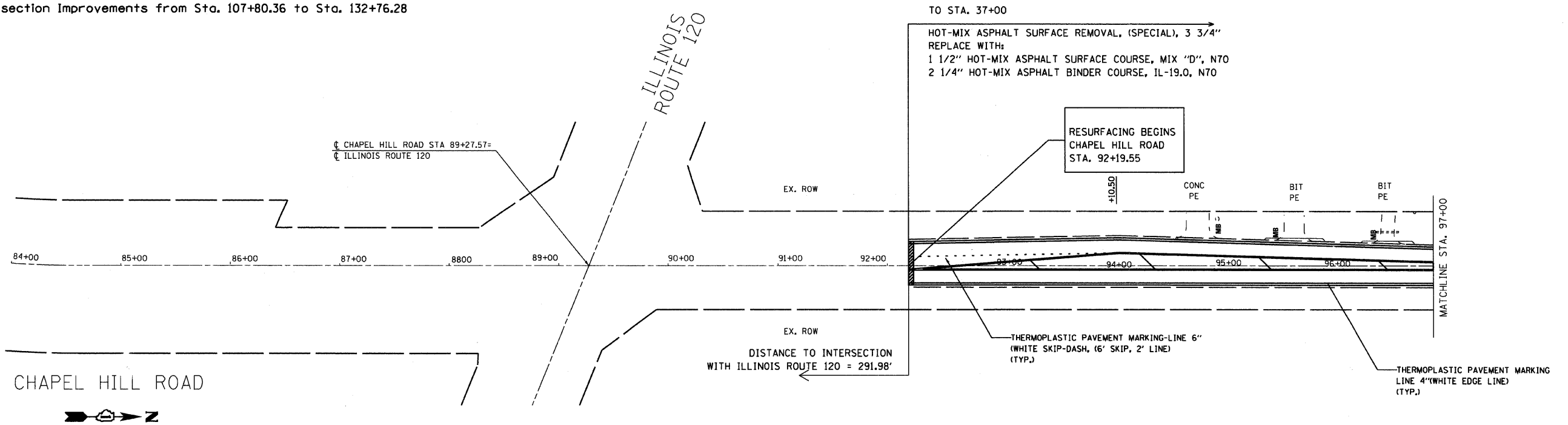
- 1) FOR PAVEMENT MARKING DETAILS, FOLLOW DISTRICT 1 STANDARD TC-13 "DISTRICT ONE TYPICAL PAVEMENT MARKINGS", WHERE APPLICABLE.
- 2) SIDE STREET PAVEMENT TO EXTEND TO RIGHT OF WAY OF CHAPEL HILL ROAD BASED ON CURRENT CONDITION OF SIDE STREET SIGHT OF WAYS.

FILE NAME =	USER NAME = #USER#	DESIGNED -	REVISED -	McHENRY COUNTY DIVISION OF TRANSPORTATION CHAPEL HILL ROAD IMPROVEMENTS	PROPOSED PLAN			F.A.U. RTE. 0167	SECTION 09-00366-00-RS	COUNTY McHENRY	TOTAL SHEETS 19	SHEET NO. 6
FILEL		DRAWN -	REVISED -		SCALE: 1"=50'	SHEET NO. 2 OF 10 SHEETS	STA. 26+00 TO STA. 52+00	FED. ROAD DIST. NO.	ILLINOIS	FED. AID PROJECT		
		CHECKED -	REVISED -									
		DATE -	REVISED -									

F.A.U. RTE. 0167	SECTION 09-00366-00-RS	COUNTY McHENRY	TOTAL SHEETS 19	SHEET NO. 6
FED. ROAD DIST. NO.		ILLINOIS FED. AID PROJECT		

OMISSIONS

- ② Exist. Improvements from Sta. 37+00 to Sta. 92+19.55
- ③ Exist./Prop. Intersection Improvements from Sta. 107+80.36 to Sta. 132+76.28



NOTE: EXISTING PAVEMENT REFLECTORS TO BE REMOVED, DISCARDED AND DISPOSED OF PROPERLY.

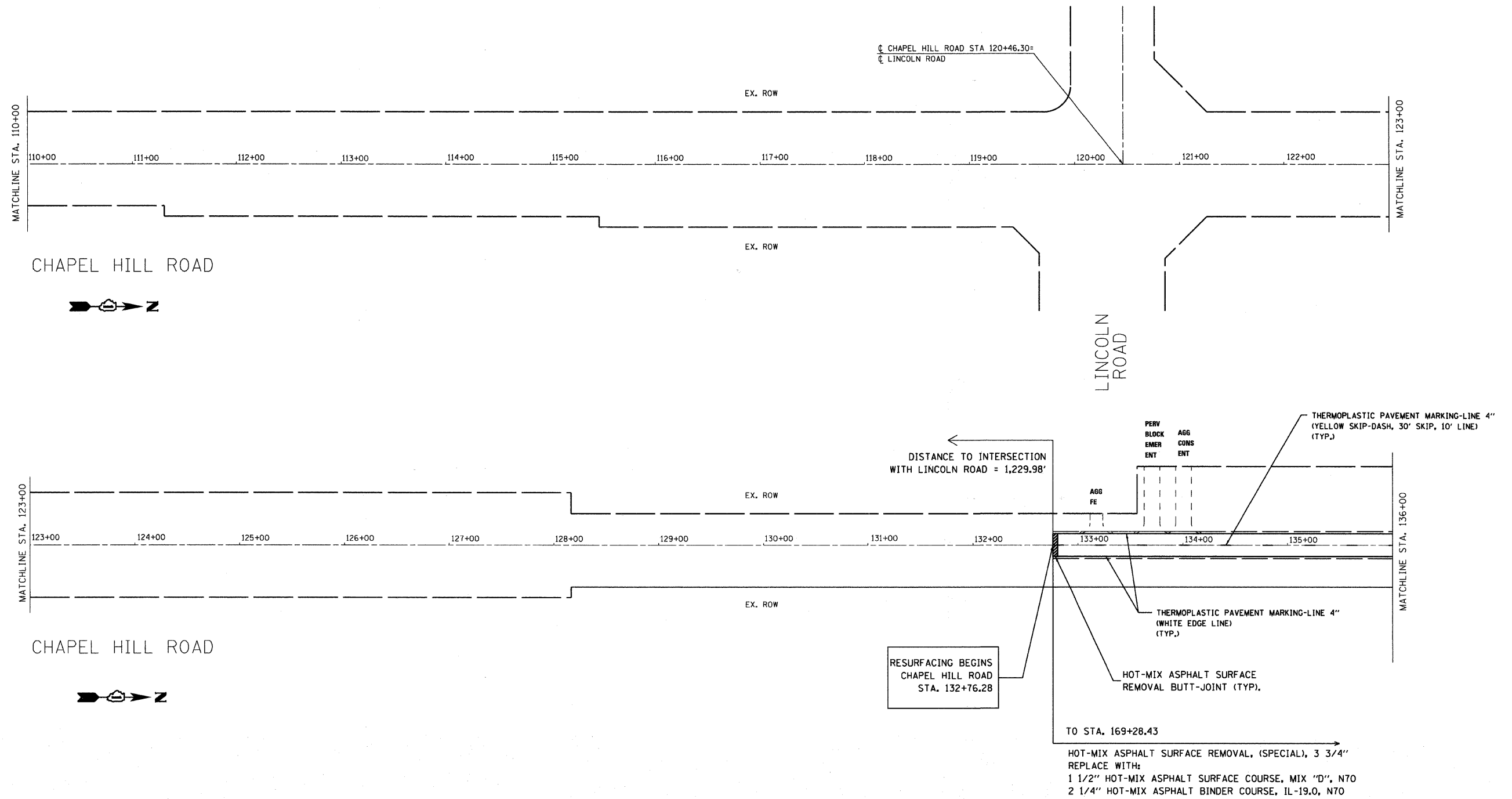
NOTES:

- 1) FOR PAVEMENT MARKING DETAILS, FOLLOW DISTRICT 1 STANDARD TC-13 "DISTRICT ONE TYPICAL PAVEMENT MARKINGS", WHERE APPLICABLE.
- 2) SIDE STREET PAVEMENT TO EXTEND TO RIGHT OF WAY OF CHAPEL HILL ROAD BASED ON CURRENT CONDITION OF SIDE STREET SIGHT OF WAYS.

FILE NAME =	USER NAME = *USER*	DESIGNED -	REVISED -	McHENRY COUNTY DIVISION OF TRANSPORTATION CHAPEL HILL ROAD IMPROVEMENTS	PROPOSED PLANS			F.A.U. RTE.	SECTION	COUNTY	TOTAL SHEETS	SHEET NO.
FILEL		DRAWN -	REVISED -		SCALE: 1"=50'	SHEET NO. 3 OF 10 SHEETS	STA. 84+00 TO STA. 110+00	0167	09-00366-00-RS	McHENRY	19	7
	PLOT SCALE = *SCALE*	CHECKED -	REVISED -					CONTRACT NO. 63380				
	PLOT DATE = *DATE*	DATE -	REVISED -					FED. ROAD DIST. NO. ILLINOIS FED. AID PROJECT				

OMISSIONS

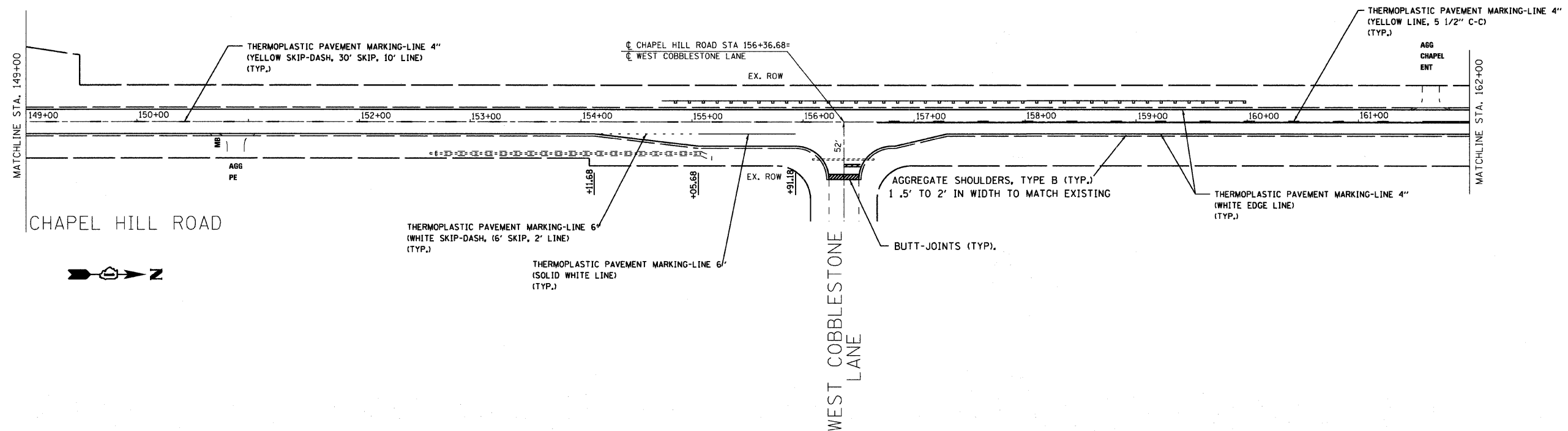
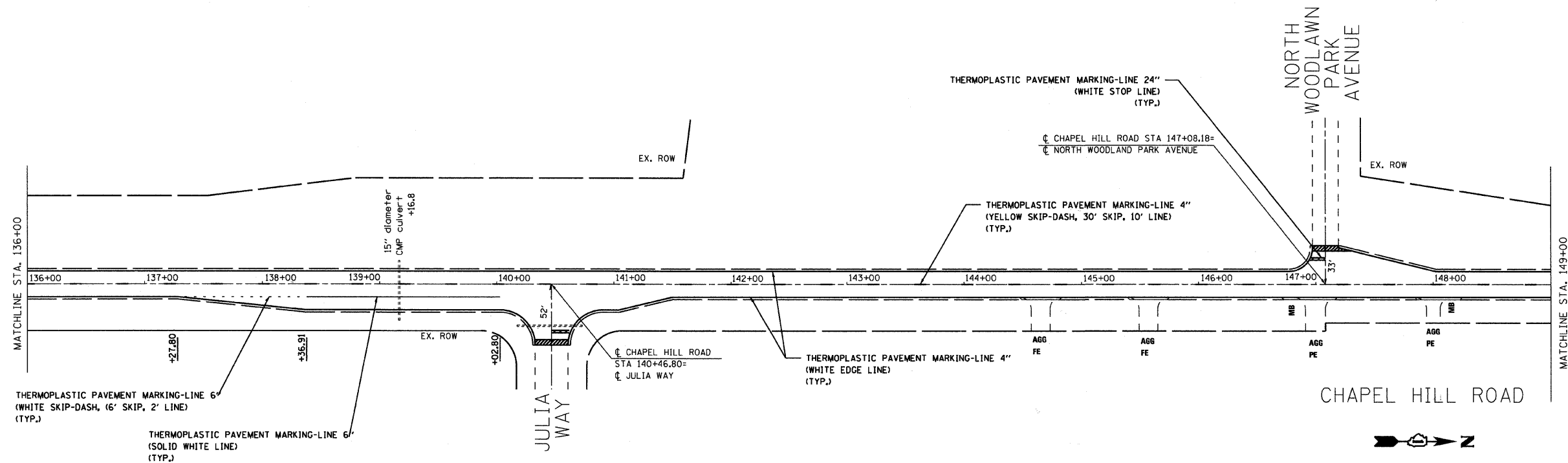
③ Exist./Prop. Intersection Improvements from Sta. 107+80.36 to Sta. 132+76.28



NOTES:

- 1) FOR PAVEMENT MARKING DETAILS, FOLLOW DISTRICT 1 STANDARD TC-13 "DISTRICT ONE TYPICAL PAVEMENT MARKINGS", WHERE APPLICABLE.
- 2) SIDE STREET PAVEMENT TO EXTEND TO RIGHT OF WAY OF CHAPEL HILL ROAD BASED ON CURRENT CONDITION OF SIDE STREET SIGHT OF WAYS.

FILE NAME =	USER NAME = #USER#	DESIGNED -	REVISED -	McHENRY COUNTY DIVISION OF TRANSPORTATION CHAPEL HILL ROAD IMPROVEMENTS	PROPOSED PLAN			F.A.U. RTE.	SECTION	COUNTY	TOTAL SHEETS	SHEET NO.
#FILE#		DRAWN -	REVISED -		SCALE: 1" = 50'	SHEET NO. 4 OF 10 SHEETS	STA. 110+00 TO STA. 136+00	0167	09-00366-00-RS	McHENRY	19	8
		CHECKED -	REVISED -					CONTRACT NO. 63380				
		DATE -	REVISED -		FED. ROAD DIST. NO. ILLINOIS FED. AID PROJECT:							



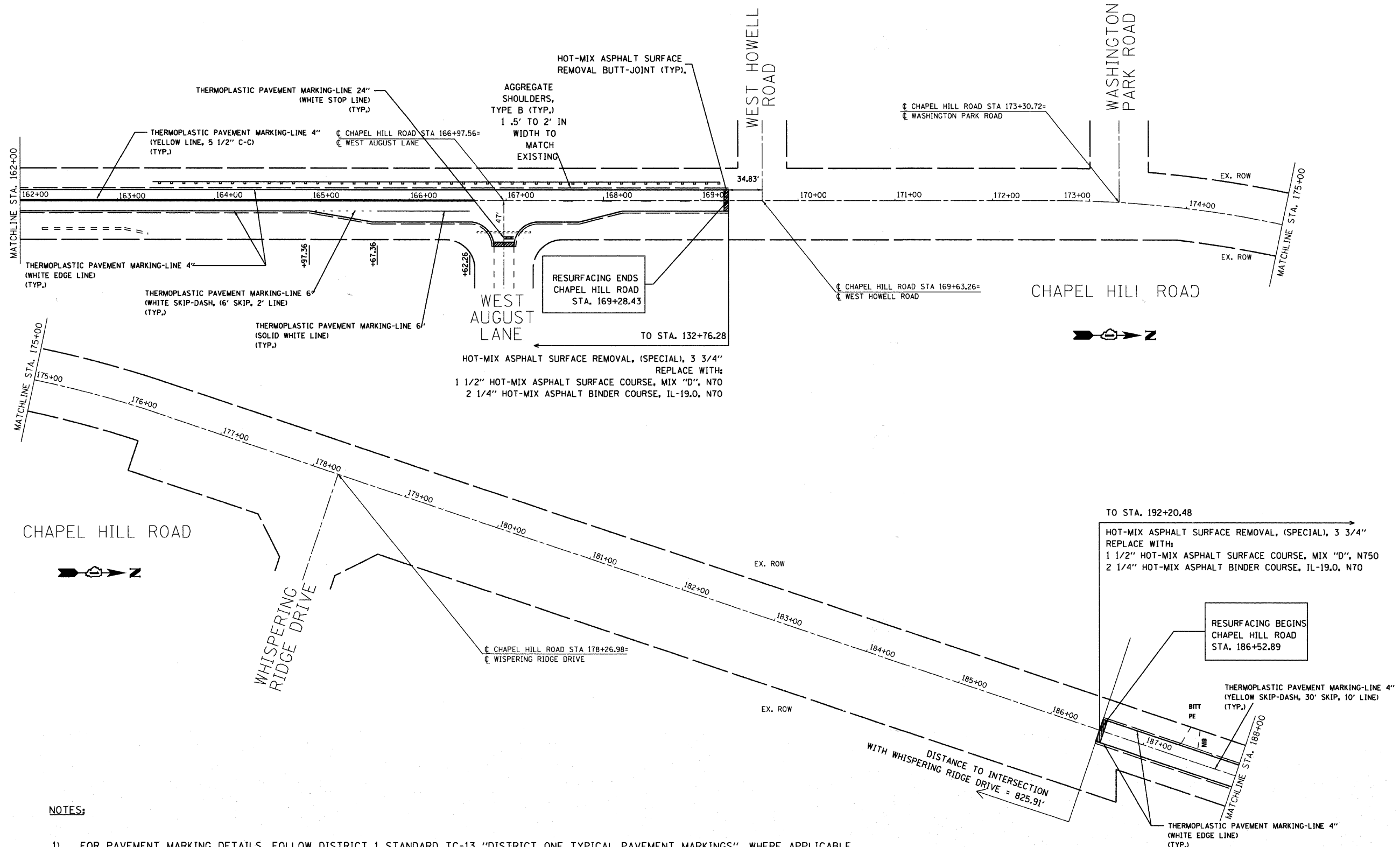
NOTES:

- 1) FOR PAVEMENT MARKING DETAILS, FOLLOW DISTRICT 1 STANDARD TC-13 "DISTRICT ONE TYPICAL PAVEMENT MARKINGS", WHERE APPLICABLE.
- 2) SIDE STREET PAVEMENT TO EXTEND TO RIGHT OF WAY OF CHAPEL HILL ROAD BASED ON CURRENT CONDITION OF SIDE STREET SIGHT OF WAYS.

FILE NAME = #FILE#	USER NAME = #USER#	DESIGNED -	REVISED -	McHENRY COUNTY DIVISION OF TRANSPORTATION CHAPEL HILL ROAD IMPROVEMENTS	PROPOSED PLAN			F.A.U. RTE.	SECTION	COUNTY	TOTAL SHEETS	SHEET NO.
	PLOT SCALE = #SCALE#	CHECKED -	REVISED -		0167	09-00366-00-RS	McHENRY	19	9			
PLOT DATE = #DATE#	DATE -	REVISED -		SCALE: 1"=50'	SHEET NO. 5 OF 10 SHEETS	STA. 136+00 TO STA. 162+00	CONTRACT NO. 63380					
							FED. ROAD DIST. NO. [ILLINOIS] FED. AID PROJECT					

OMISSIONS

④ Exist. Improvements from Sta. 169+28.43 to Sta. 186+52.89



NOTES:

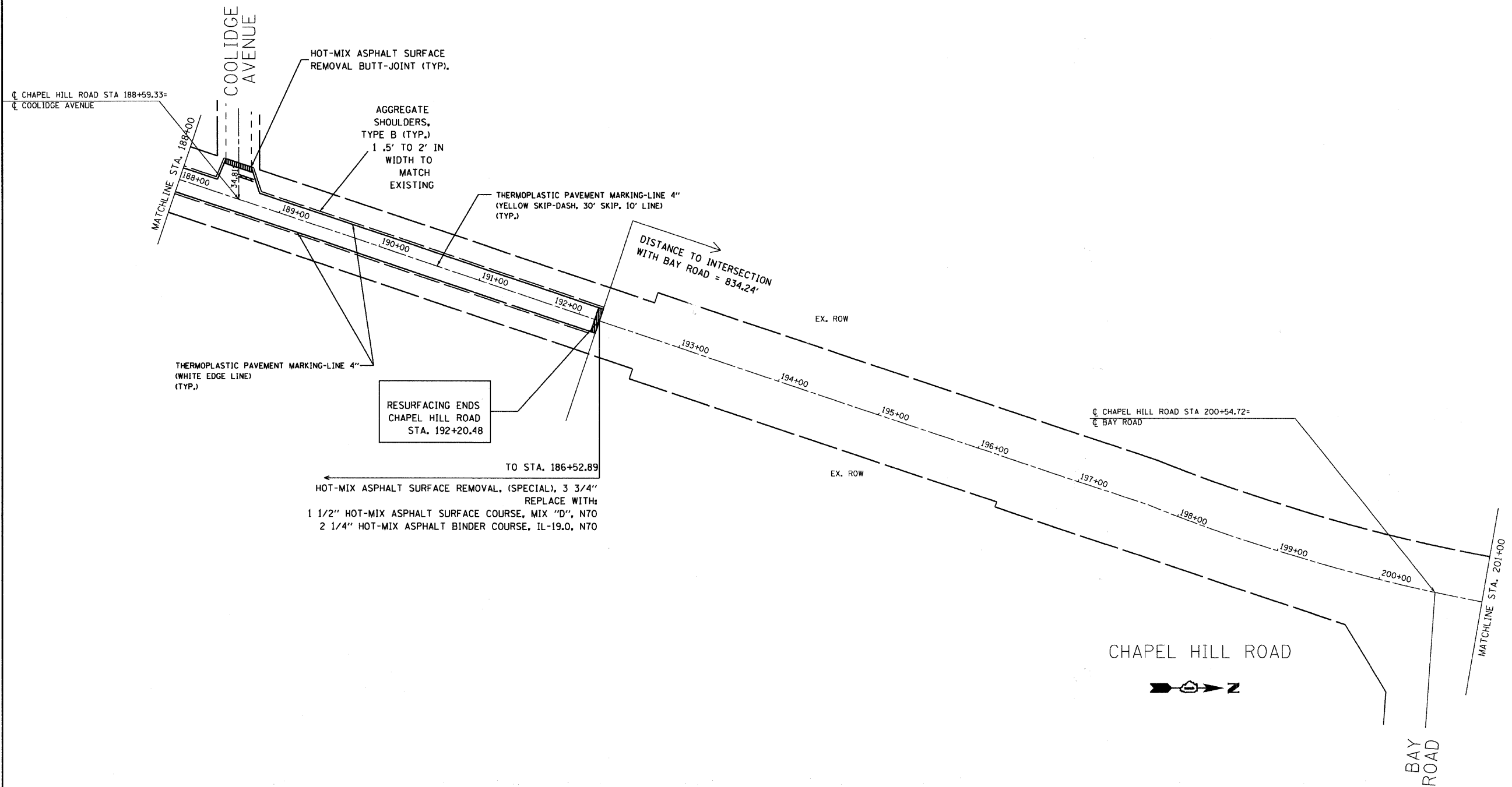
- 1) FOR PAVEMENT MARKING DETAILS, FOLLOW DISTRICT 1 STANDARD TC-13 "DISTRICT ONE TYPICAL PAVEMENT MARKINGS", WHERE APPLICABLE.
- 2) SIDE STREET PAVEMENT TO EXTEND TO RIGHT OF WAY OF CHAPEL HILL ROAD BASED ON CURRENT CONDITION OF SIDE STREET SIGHT OF WAYS.

FILE NAME =	USER NAME = #USER#	DESIGNED -	REVISED -	McHENRY COUNTY DIVISION OF TRANSPORTATION CHAPEL HILL ROAD IMPROVEMENTS	PROPOSED PLAN			F.A.J. RTE.	SECTION	COUNTY	TOTAL SHEETS	SHEET NO.	
*FILEL#		DRAWN -	REVISED -		SCALE: 1"=50'	SHEET NO. 6 OF 10 SHEETS	STA. 162+00 TO STA. 188+00	0167	09-00366-00-RS	McHENRY	19	10	
		CHECKED -	REVISED -										
		DATE -	REVISED -										

FED. ROAD DIST. NO.	ILLINOIS	FED. AID PROJECT
---------------------	----------	------------------

OMISSIONS

⑤ Exist. Intersection Improvements from Sta. 192+20.48 to Sta. 210+47.51



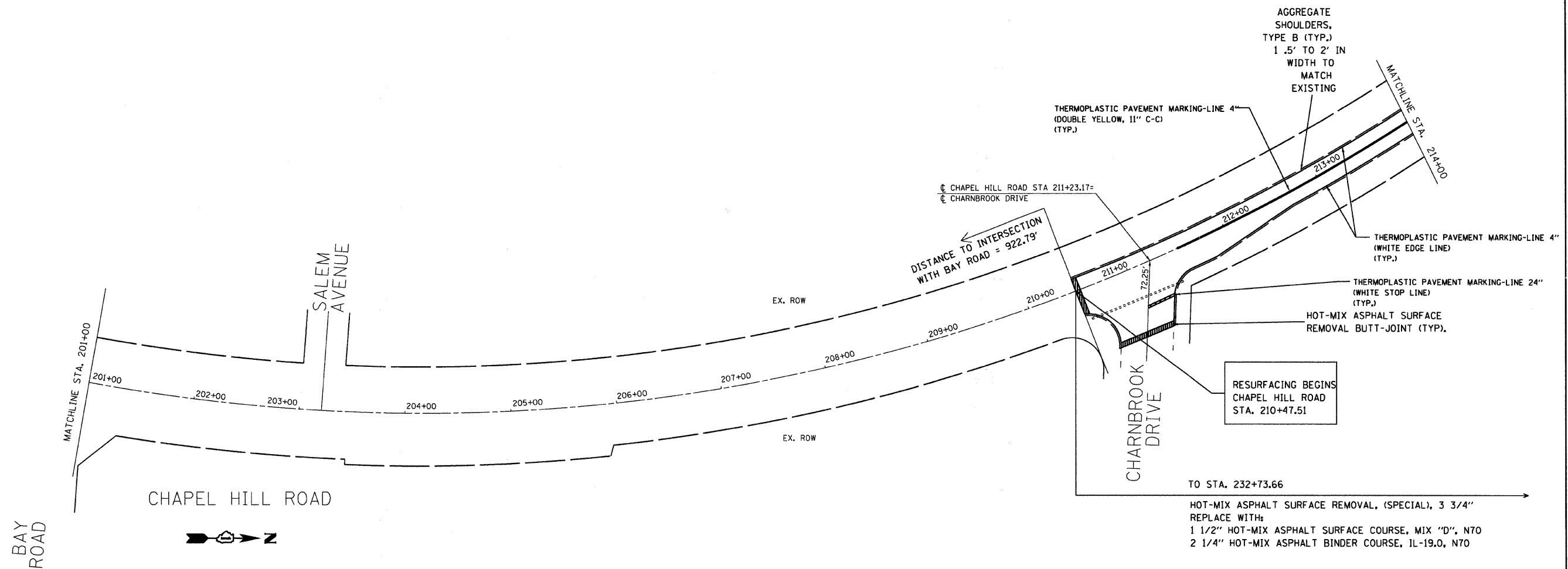
NOTES:

- 1) FOR PAVEMENT MARKING DETAILS, FOLLOW DISTRICT 1 STANDARD TC-13 "DISTRICT ONE TYPICAL PAVEMENT MARKINGS", WHERE APPLICABLE.
- 2) SIDE STREET PAVEMENT TO EXTEND TO RIGHT OF WAY OF CHAPEL HILL ROAD BASED ON CURRENT CONDITION OF SIDE STREET SIGHT OF WAYS.

FILE NAME =	USER NAME = #USER#	DESIGNED -	REVISED -	McHENRY COUNTY DIVISION OF TRANSPORTATION CHAPEL HILL ROAD IMPROVEMENTS	PROPOSED PLAN			F.A.U. RTE.	SECTION	COUNTY	TOTAL SHEETS	SHEET NO.
#FILE#		DRAWN -	REVISED -		SCALE: 1"=50'	SHEET NO. 7 OF 10 SHEETS	STA. 188+00 TO STA. 201+00	0167	09-00366-00-RS	McHENRY	19	11
		CHECKED -	REVISED -					CONTRACT NO. 63380				
		DATE -	REVISED -					FED. ROAD DIST. NO. ILLINOIS FED. AID PROJECT				

OMISSIONS

⑤ Exist. Intersection Improvements from Sta. 192+20.48 to Sta. 210+47.51



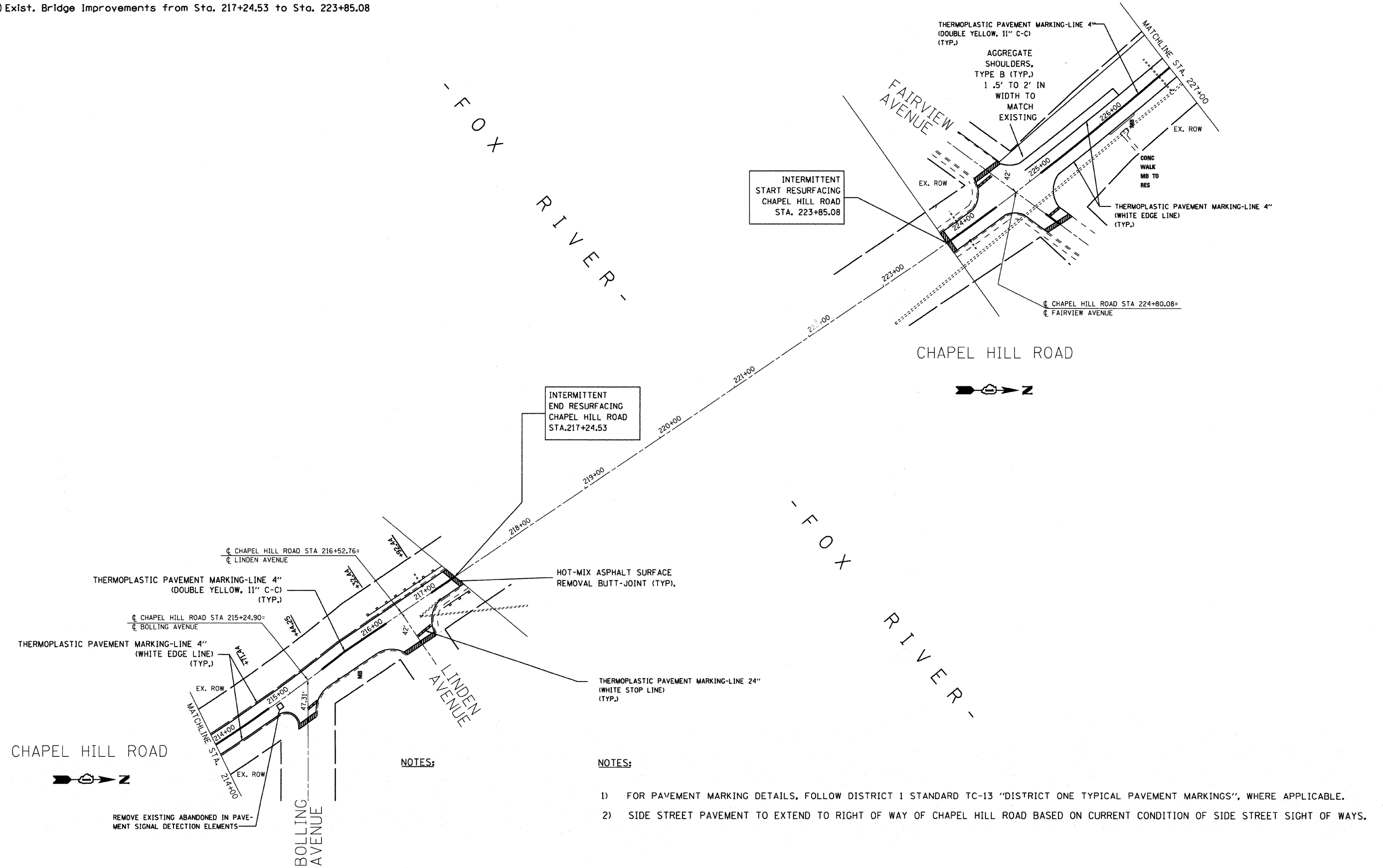
NOTES:

- 1) FOR PAVEMENT MARKING DETAILS, FOLLOW DISTRICT 1 STANDARD TC-13 "DISTRICT ONE TYPICAL PAVEMENT MARKINGS", WHERE APPLICABLE.
- 2) SIDE STREET PAVEMENT TO EXTEND TO RIGHT OF WAY OF CHAPEL HILL ROAD BASED ON CURRENT CONDITION OF SIDE STREET SIGHT OF WAYS.

FILE NAME =	USER NAME = #USER#	DESIGNED -	REVISED -	McHENRY COUNTY DIVISION OF TRANSPORTATION CHAPEL HILL ROAD IMPROVEMENTS	PROPOSED PLAN			F.A.J. RTE.	SECTION	COUNTY	TOTAL SHEETS	SHEET NO.
#FILE#		DRAWN -	REVISED -		SCALE: 1"=50'	SHEET NO. 8 OF 10 SHEETS	STA. 201+00 TO STA. 214+00	0167	09-00366-00-RS	McHENRY	19	12
		CHECKED -	REVISED -							CONTRACT NO. 63380		
		DATE -	REVISED -							FED. ROAD DIST. NO. ILLINOIS FED. AID PROJECT		

OMISSIONS

⑥ Exist. Bridge Improvements from Sta. 217+24.53 to Sta. 223+85.08



CHAPEL HILL ROAD



CHAPEL HILL ROAD



NOTES:

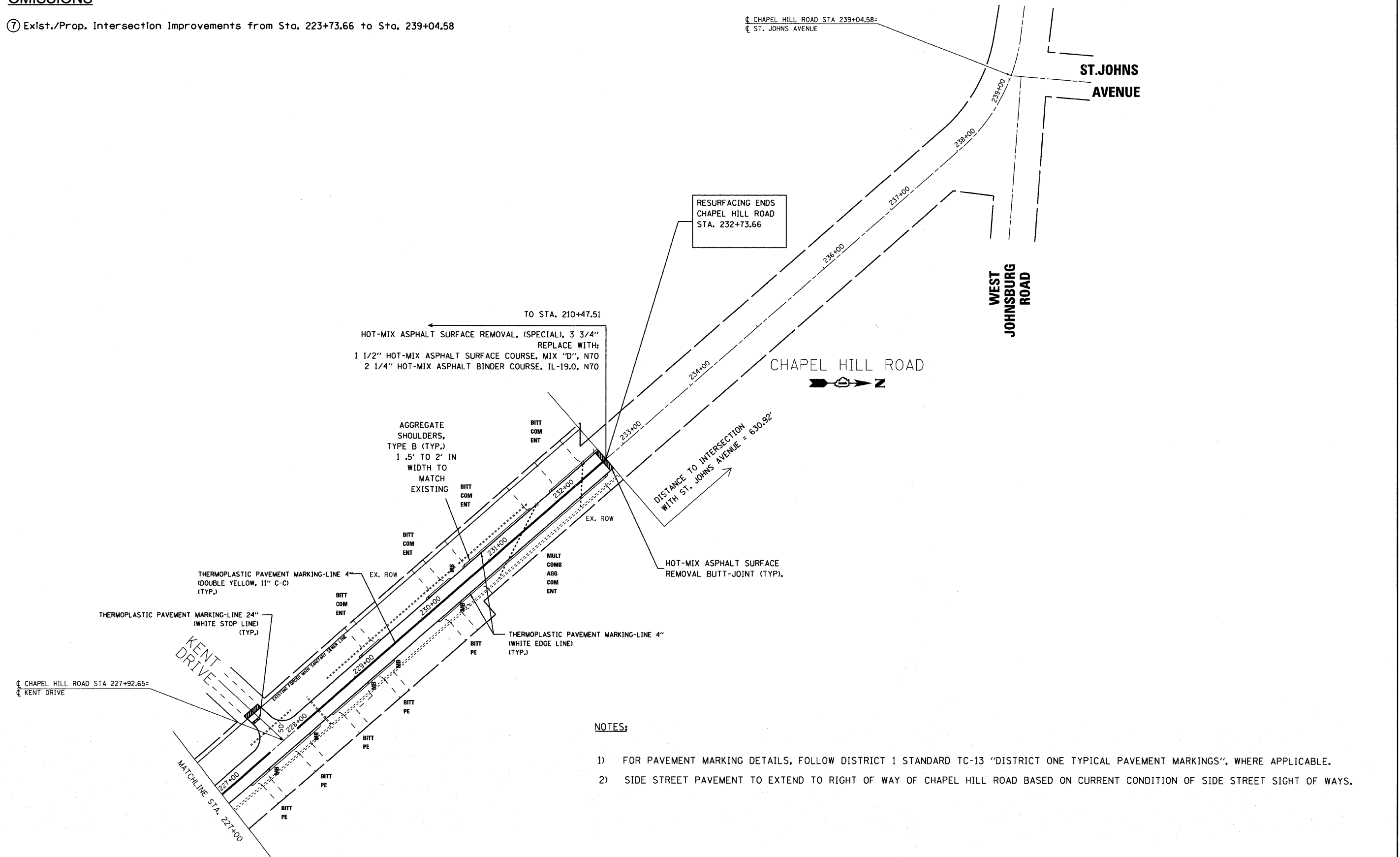
NOTES:

- 1) FOR PAVEMENT MARKING DETAILS, FOLLOW DISTRICT 1 STANDARD TC-13 "DISTRICT ONE TYPICAL PAVEMENT MARKINGS", WHERE APPLICABLE.
- 2) SIDE STREET PAVEMENT TO EXTEND TO RIGHT OF WAY OF CHAPEL HILL ROAD BASED ON CURRENT CONDITION OF SIDE STREET SIGHT OF WAYS.

FILE NAME =	USER NAME = #USER#	DESIGNED -	REVISED -	McHENRY COUNTY DIVISION OF TRANSPORTATION CHAPEL HILL ROAD IMPROVEMENTS	PROPOSED PLAN			F.A.U. RTE.	SECTION	COUNTY	TOTAL SHEETS	SHEET NO.		
#FILEL#		DRAWN -	REVISED -		0167	09-00366-00-RS	McHENRY	19	13					
	PLOT SCALE = #SCALE#	CHECKED -	REVISED -		SCALE: 1" = 50'			SHEET NO. 9 OF 10 SHEETS			STA. 214+00 TO STA. 227+00		FED. ROAD DIST. NO.	ILLINOIS FED. AID PROJECT
	PLOT DATE = #DATE#	DATE -	REVISED -		CONTRACT NO. 63380									

OMISSIONS

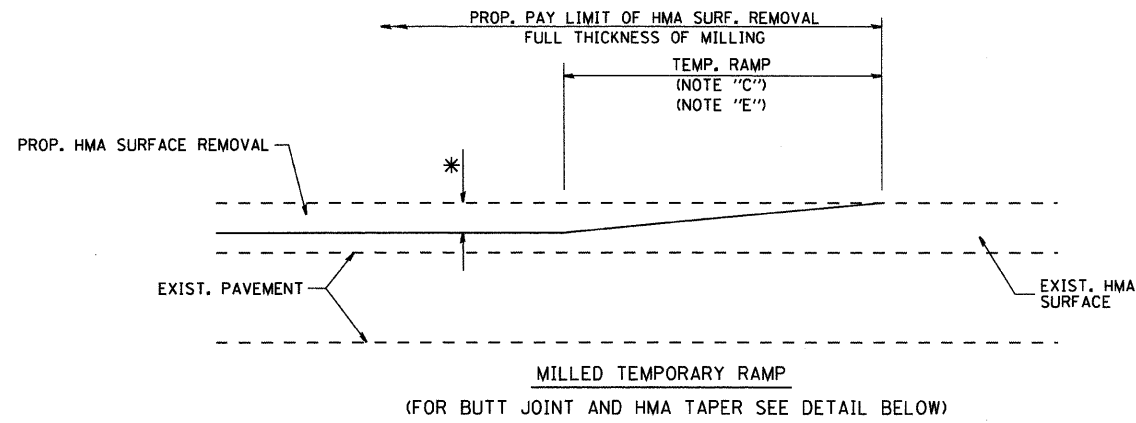
⑦ Exist./Prop. Intersection Improvements from Sta. 223+73.66 to Sta. 239+04.58



NOTES:

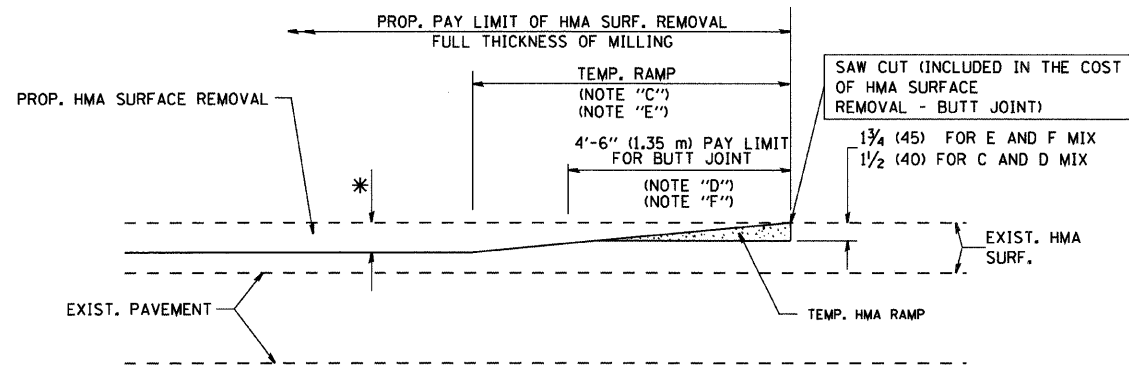
- 1) FOR PAVEMENT MARKING DETAILS, FOLLOW DISTRICT 1 STANDARD TC-13 "DISTRICT ONE TYPICAL PAVEMENT MARKINGS", WHERE APPLICABLE.
- 2) SIDE STREET PAVEMENT TO EXTEND TO RIGHT OF WAY OF CHAPEL HILL ROAD BASED ON CURRENT CONDITION OF SIDE STREET SIGHT OF WAYS.

FILE NAME =	USER NAME = #USER*	DESIGNED -	REVISED -	McHENRY COUNTY DIVISION OF TRANSPORTATION CHAPEL HILL ROAD IMPROVEMENTS	PROPOSED PLAN			F.A.U. RTE.	SECTION	COUNTY	TOTAL SHEETS	SHEET NO.
#FILE#		DRAWN -	REVISED -		0167	09-00366-00-RS	McHENRY	19	14			
	PLOT SCALE = #SCALE*	CHECKED -	REVISED -		SCALE: 1"=50'			SHEET NO. 10 OF 10 SHEETS		STA. 227+00 TO STA. 240+00	CONTRACT NO. 63380	
	PLOT DATE = #DATE*	DATE -	REVISED -		FED. ROAD DIST. NO.		ILLINOIS FED. AID PROJECT					



MILLED TEMPORARY RAMP
(FOR BUTT JOINT AND HMA TAPER SEE DETAIL BELOW)

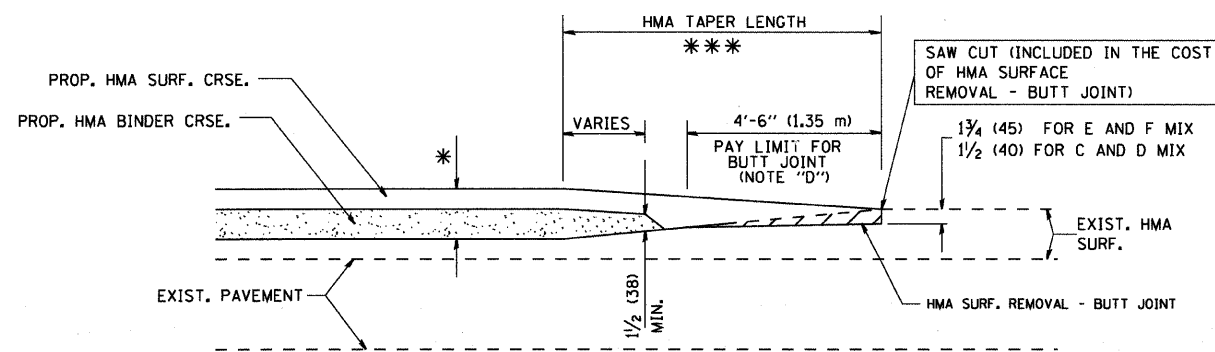
OPTION 1



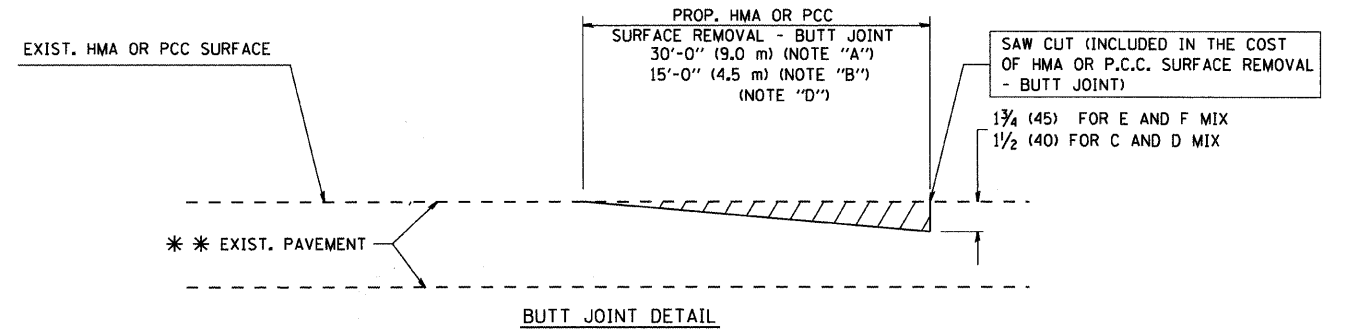
HMA CONSTRUCTED TEMPORARY RAMP
(FOR BUTT JOINT AND HMA TAPER SEE DETAIL BELOW)

OPTION 2

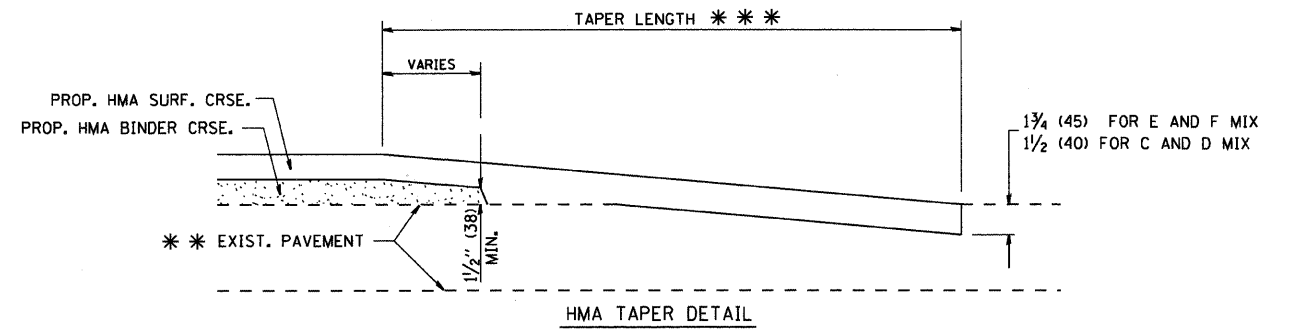
TYPICAL TEMPORARY RAMP



BUTT JOINT AND HMA TAPER
TYPICAL BUTT JOINT AND HMA TAPER
FOR MILLING AND RESURFACING



BUTT JOINT DETAIL



HMA TAPER DETAIL

TYPICAL BUTT JOINT AND HMA TAPER
FOR RESURFACING ONLY

*** PC CONCRETE, HMA OR HMA RESURFACED PAVEMENT.

NOTES

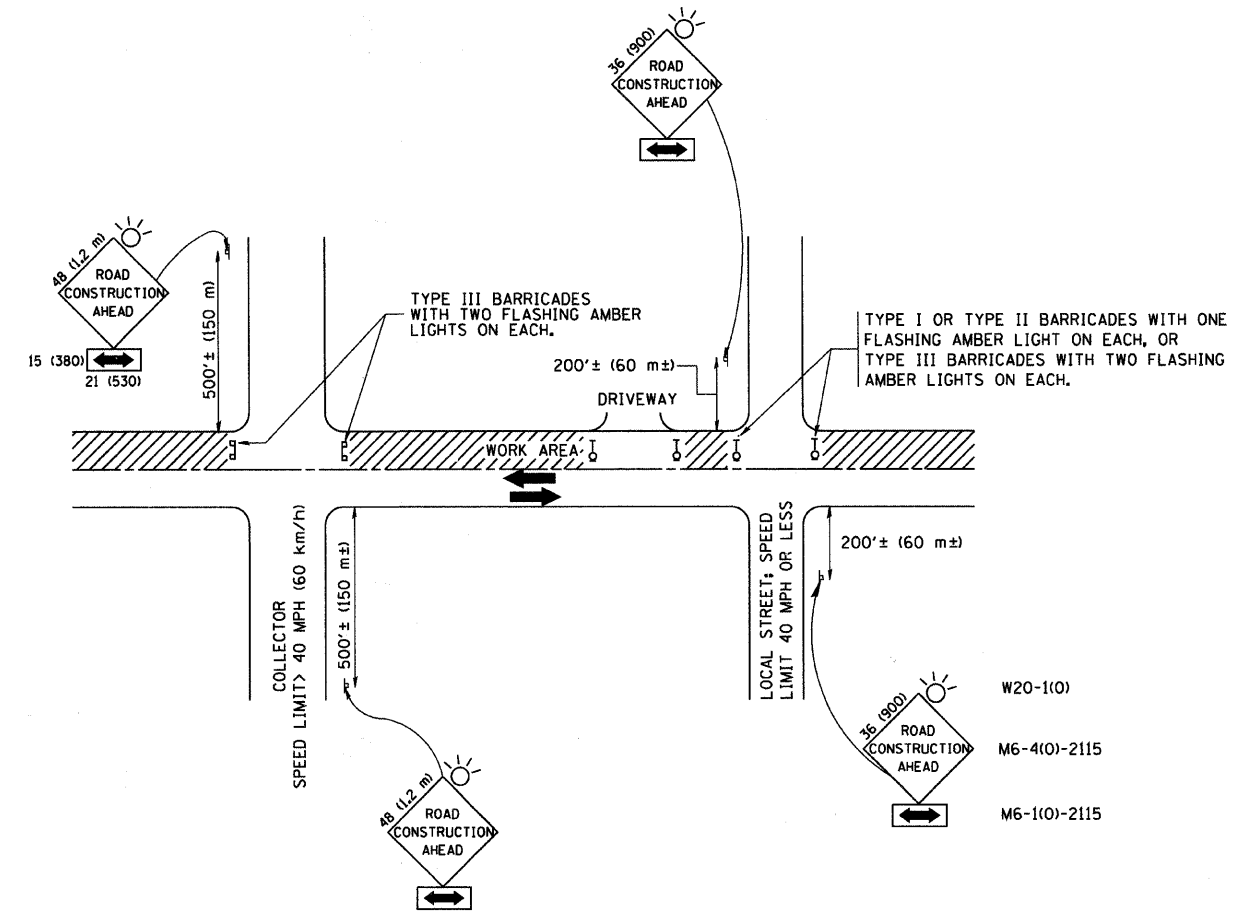
- A: MAINLINE ROADWAYS AND MAJOR SIDE ROADS.
 - B: MINOR SIDE ROADS.
 - C: THE TEMP. RAMP SHALL BE CONSTRUCTED IMMEDIATELY UPON REMOVAL OF THE EXISTING HMA SURFACE.
 - D: THE BUTT JOINT SHALL BE CONSTRUCTED IMMEDIATELY PRIOR TO PLACING THE PROPOSED HMA COURSES.
 - E: TAPER THE TEMP. RAMP AT A RATE OF 3'-0" (900 mm) PER 1 INCH (25 mm) OF MILLING THICKNESS.
 - F: INSTALLATION AND REMOVAL OF THE 4'-6" (1.35 m) TEMP. RAMP IS INCLUDED IN COST OF HMA SURFACE REMOVAL - BUTT JOINT
 - G: SEE ARTICLE 406.08 AND 406.14 OF THE STANDARD SPECIFICATIONS FOR "HMA AND/OR PCC SURFACE REMOVAL, BUTT JOINT".
- * SEE TYPICAL SECTIONS FOR MILLING THICKNESS.
- *** 20'-0" (6.1 m) PER 1 (25) RESURFACING (NOTE "A")
10'-0" (3.0 m) PER 1 (25) RESURFACING (NOTE "B")

BASIS OF PAYMENT:

THE BUTT JOINT WILL BE PAID FOR AT THE CONTRACT UNIT PRICE PER SQUARE YARD (SQUARE METER) FOR "HOT-MIX ASPHALT SURFACE REMOVAL - BUTT JOINT" OR FOR "PORTLAND CEMENT CONCRETE SURFACE REMOVAL - BUTT JOINT".

ALL DIMENSIONS ARE IN INCHES (MILLIMETERS) UNLESS OTHERWISE SHOWN.

FILE NAME =	USER NAME = *USER*	DESIGNED - M. DE YONG	REVISED - R. SHAH 10-25-94	STATE OF ILLINOIS DEPARTMENT OF TRANSPORTATION	BUTT JOINT AND HMA TAPER DETAILS		F.A.J.J. RTE.	SECTION	COUNTY	TOTAL SHEETS	SHEET NO.	
FILEL		DRAWN -	REVISED - A. ABBAS 03-21-97		SCALE: N.T.S.	SHEET NO. 1 OF 1 SHEETS	STA.	TO STA.	0167	09-00366-00-R5	MCHEMRY	19 15
		PLOT SCALE = *SCALE*	CHECKED -		REVISED - M. GOMEZ 04-06-01				BD400-05 BD32		CONTRACT NO. 63380	
		PLOT DATE = *DATE*	DATE - 06-13-90		REVISED - R. BORO 01-01-07				<small>FED. ROAD DIST. NO. 1 ILLINOIS FED. AID PROJECT</small>			



TRAFFIC CONTROL AND PROTECTION FOR SIDE ROADS, INTERSECTIONS, AND DRIVEWAYS

NOTES:

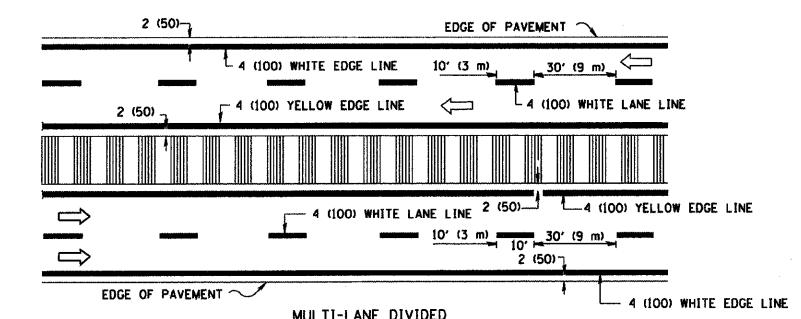
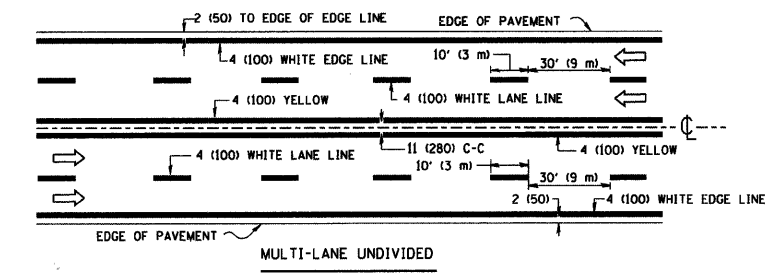
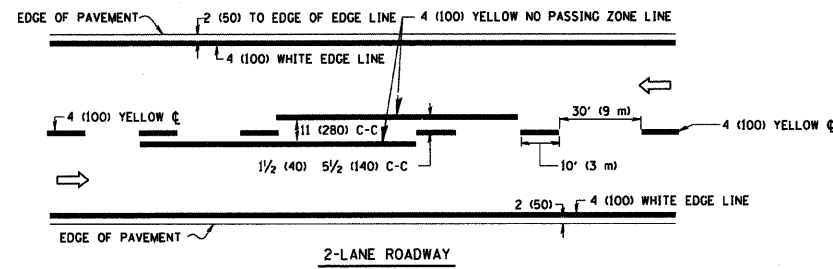
- A. FOR NO LANE RESTRICTION ON THE SIDE ROAD OR DRIVEWAYS
- SIDE ROAD WITH A SPEED LIMIT OF 40 MPH (60 km/h) OR LESS AS SHOWN ON THE DRAWING AND AS DIRECTED BY THE ENGINEER:
 - ONE ROAD CONSTRUCTION AHEAD SIGN 36 x 36 (900x900) WITH A FLASHER AND FLAG MOUNTED ON IT APPROXIMATELY 200' (60 m) IN ADVANCE OF THE MAIN ROUTE.
 - THE CLOSED PORTION OF THE MAIN ROUTE SHALL BE PROTECTED BY BLOCKING WITH TYPE I, TYPE II OR TYPE III BARRICADES, 1/3 OF THE CROSS SECTION OF THE CLOSED PORTION.
 - SIDE ROAD WITH A SPEED LIMIT GREATER THAN 40 MPH (60 km/h) AS SHOWN ON THE DRAWING AND AS DIRECTED BY THE ENGINEER:
 - ONE ROAD CONSTRUCTION AHEAD SIGN 48 x 48 (1.2 m x 1.2 m) WITH A FLASHER MOUNTED ON IT APPROXIMATELY 500' (150 m) IN ADVANCE OF THE MAIN ROUTE.
 - THE CLOSED PORTION OF THE MAIN ROUTE SHALL BE PROTECTED BY BLOCKING WITH TYPE III BARRICADES, 1/2 OF THE CROSS SECTION OF THE CLOSED PORTION.
3. WHEN THE SIDE ROAD LIES BETWEEN THE BEGINNING OF THE MAINLINE SIGNING AND THE WORK ZONE, A SINGLE HEADED ARROW (M6-1) SHALL BE USED IN LIEU OF THE DOUBLE HEADED ARROW (M6-4).
- B. FOR A LANE CLOSURE ON A SIDE ROAD OR DRIVEWAY:
- USE APPLICABLE PORTIONS OF THE TYPICAL APPLICATION OF TRAFFIC CONTROL DEVICES (STD. 701501, STD. 701606 OR THE APPROPRIATE STANDARD). THE SPACING OF SIGNS AND BARRICADES SHALL BE ADJUSTED FOR FIELD CONDITIONS AS DIRECTED BY THE ENGINEER. THE DIRECTIONAL ARROW SHALL BE COVERED OR REMOVED WHEN NO LONGER CONSISTENT WITH THE SIDE ROAD LANE CLOSURE.
- C. ADVANCE WARNING SIGNS ARE TO BE OMITTED ON DRIVEWAY UNLESS OTHERWISE NOTED.
- D. THE TRAFFIC CONTROL AND PROTECTION FOR SIDE ROADS, INTERSECTIONS, AND DRIVEWAYS SHALL BE INCIDENTAL TO THE COST OF SPECIFIED TRAFFIC CONTROL STANDARDS OR ITEMS.

All dimensions are in millimeters (inches) unless otherwise shown.

FILE NAME =	USER NAME = #USER#	DESIGNED - LHA	REVISED - H. OBERLE 10-18-95
#FILE#		DRAWN -	REVISED - A. HOUSEH 03-06-96
	PLOT SCALE = #SCALE#	CHECKED -	REVISED - A. HOUSEH 10-15-96
	PLOT DATE = #DATE#	DATE - 06-89	REVISED - T. RAMMACHER 01-06-00

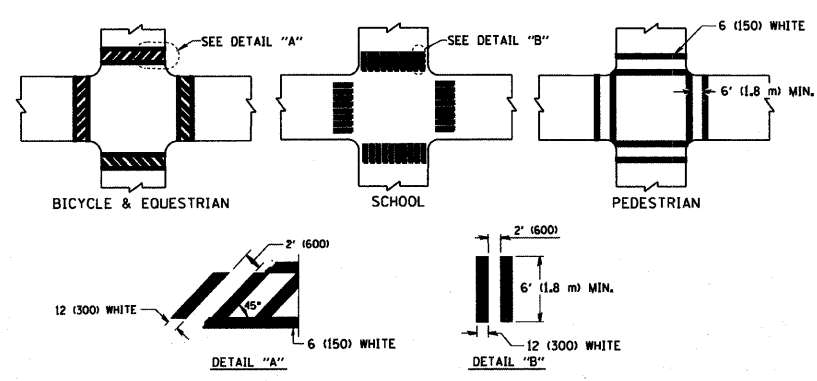
STATE OF ILLINOIS
DEPARTMENT OF TRANSPORTATION

TRAFFIC CONTROL AND PROTECTION FOR SIDE ROADS, INTERSECTIONS, AND DRIVEWAYS			F.A.U. RTE.	SECTION	COUNTY	TOTAL SHEETS	SHEET NO.
SCALE: N.T.S.			0167	09-00366-00-RS	McHENRY	19	16
SHEET NO. 1 OF 1 SHEETS			TC-10		CONTRACT NO. 63380		
STA. TO STA.			FED. ROAD DIST. NO. 1 ILLINOIS FED. AID PROJECT				

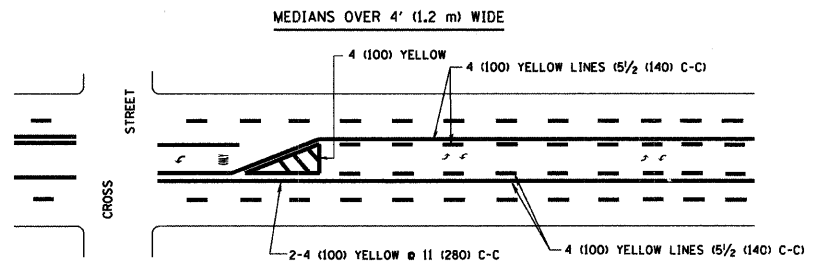
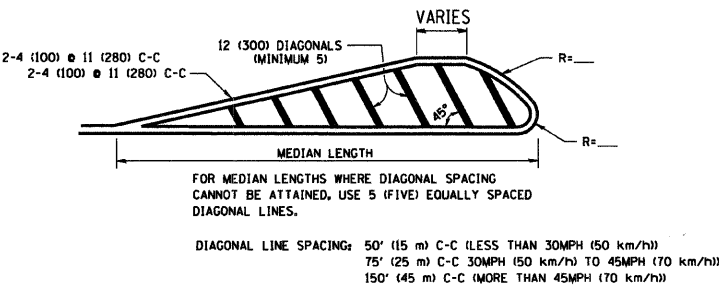
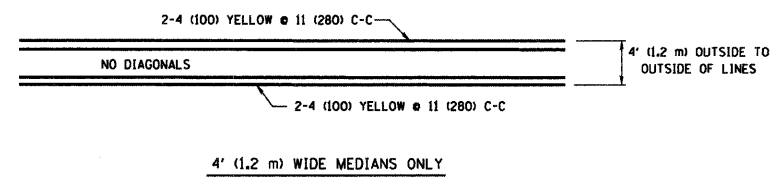


NOTE: MEDIANS WITH BARRIER CURB DO NOT REQUIRE AN EDGE LINE

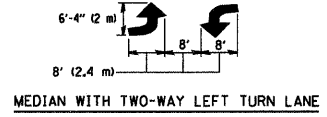
TYPICAL LANE AND EDGE LINE MARKING



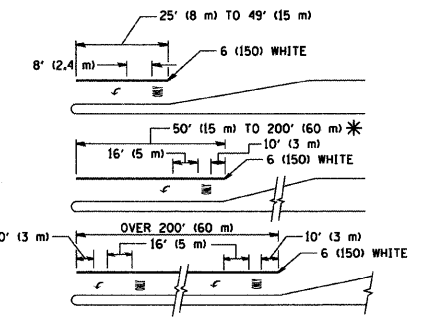
TYPICAL CROSSWALK MARKING



A MINIMUM OF TWO PAIRS OF TURN ARROWS SHALL BE USED, WHITE IN COLOR. ADDITIONAL PAIRS SHALL BE PLACED AT 200' (60 m) TO 300' (90 m) INTERVALS.

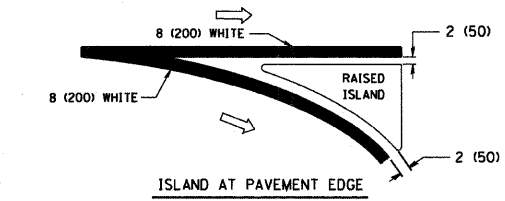
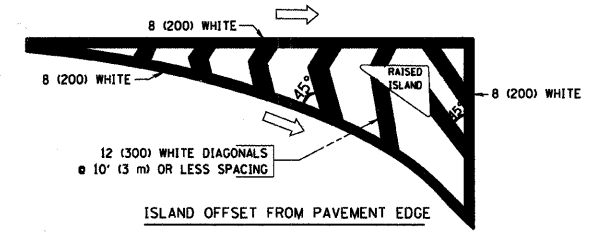


TYPICAL PAINTED MEDIAN MARKING



FULL SIZE LETTERS 8' (2.4 m) AND ARROWS SHALL BE USED. AREA = 15.6 SQ. FT. (1.5 m²) AREA = 20.8 SQ. FT. (1.9 m²)
 * TURN LANES IN EXCESS OF 400' (120 m) IN LENGTH MAY HAVE AN ADDITIONAL SET OF ARROW - "ONLY" INSTALLED MIDWAY BETWEEN THE OTHER TWO SETS OF ARROW - "ONLY".

TYPICAL TURN LANE MARKING



TYPICAL ISLAND MARKING

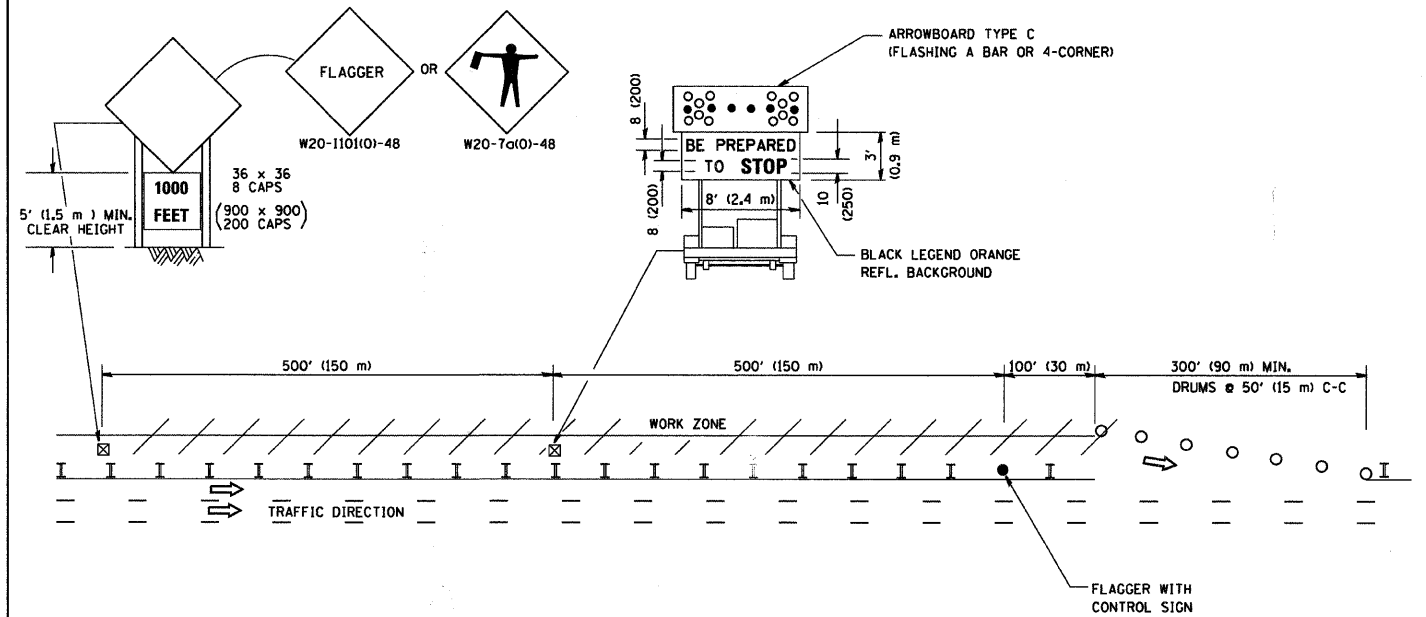
TYPE OF MARKING	WIDTH OF LINE	PATTERN	COLOR	SPACING / REMARKS
CENTERLINE ON 2 LANE PAVEMENT	4 (100)	SKIP-DASH	YELLOW	10' (3 m) LINE WITH 30' (9 m) SPACE
CENTERLINE ON MULTI-LANE UNDIVIDED PAVEMENT	2 @ 4 (100)	SOLID	YELLOW	11 (280) C-C
NO PASSING ZONE LINES: FOR ONE DIRECTION FOR BOTH DIRECTIONS	4 (100) 2 @ 4 (100)	SOLID SOLID	YELLOW YELLOW	5/2 (140) C-C FROM SKIP-DASH CENTERLINE FOR ONE DIRECTION OMIT SKIP-DASH CENTERLINE BETWEEN
LANE LINES	4 (100) 5 (125) ON FREEWAYS	SKIP-DASH SKIP-DASH	WHITE WHITE	10' (3 m) LINE WITH 30' (9 m) SPACE
DOTTED LINES (EXTENSIONS OF CENTER, LANE OR TURN LANE MARKINGS)	SAME AS LINE BEING EXTENDED	SKIP-DASH	SAME AS LINE BEING EXTENDED	2' (600) LINE WITH 6' (1.8 m) SPACE
EDGE LINES	4 (100)	SOLID	YELLOW-LEFT WHITE-RIGHT	OUTLINE MOUNTABLE MEDIANS IN YELLOW; EDGE LINES ARE NOT USED NEXT TO BARRIER CURB
TURN LANE MARKINGS	6 (150) LINE; FULL SIZE LETTERS & SYMBOLS (8' (2.4 m))	SOLID	WHITE	SEE TYPICAL TURN LANE MARKING DETAIL
TWO WAY LEFT TURN MARKING	2 @ 4 (100) EACH DIRECTION 8' (2.4 m) LEFT ARROW	SKIP-DASH AND SOLID IN PAIRS	YELLOW WHITE	10' (3 m) LINE WITH 30' (9 m) SPACE FOR SKIP-DASH; 5/2 (140) C-C BETWEEN SOLID LINE AND SKIP-DASH LINE SEE TYPICAL TWO-WAY LEFT TURN MARKING DETAIL
CROSSWALK LINES (PEDESTRIAN) A. DIAGONALS (BIKE & EQUESTRIAN) B. LONGITUDINAL BARS (SCHOOL)	2 @ 6 (150) 12 (300) @ 45° 12 (300) @ 90°	SOLID SOLID SOLID	WHITE WHITE WHITE	NOT LESS THAN 6' (1.8 m) APART 2' (600) APART SEE TYPICAL CROSSWALK MARKING DETAILS.
STOP LINES	24 (600)	SOLID	WHITE	PLACE 4' (1.2 m) IN ADVANCE OF AND PARALLEL TO CROSSWALK, IF PRESENT, OTHERWISE, PLACE AT DESIRED STOPPING POINT, PARALLEL TO CROSSROAD CENTERLINE, WHERE POSSIBLE
PAINTED MEDIANS	2 @ 4 (100) WITH 12 (300) DIAGONALS @ 45° NO DIAGONALS USED FOR 4' (1.2 m) WIDE MEDIANS	SOLID	YELLOW; WHITE; ONE WAY TRAFFIC	11 (280) C-C FOR THE DOUBLE LINE SEE TYPICAL PAINTED MEDIAN MARKING.
GORE MARKING AND CHANNELIZING LINES	8 (200) WITH 12 (300) DIAGONALS @ 45°	SOLID	WHITE	DIAGONALS: 15' (4.5 m) C-C (LESS THAN 30MPH (50 km/h)) 20' (6 m) C-C 30MPH (50 km/h) TO 45MPH (70 km/h) 30' (9 m) C-C (OVER 45MPH (70 km/h))
RAILROAD CROSSING	24 (600) TRANSVERSE LINES; "RR" IS 6' (1.8 m) LETTERS; 16 (400) LINE FOR "X"	SOLID	WHITE	SEE STATE STANDARD 780001 AREA OF: "R"=3.6 SQ. FT. (0.33 m ²) EACH "X"=54.0 SQ. FT. (5.0 m ²)
SHOULDER DIAGONALS	12 (300) @ 45°	SOLID	WHITE - RIGHT YELLOW - LEFT	50' (15 m) C-C (LESS THAN 30MPH (50 km/h)) 75' (25 m) C-C (30 MPH (50 km/h) TO 45MPH (70 km/h)) 150' (45 m) C-C (OVER 45MPH (70 km/h))

FOR FURTHER DETAILS ON PAVEMENT MARKING REFER TO STANDARD SPECIFICATIONS FOR ROAD AND BRIDGE CONSTRUCTION AND STATE STANDARD 780001.

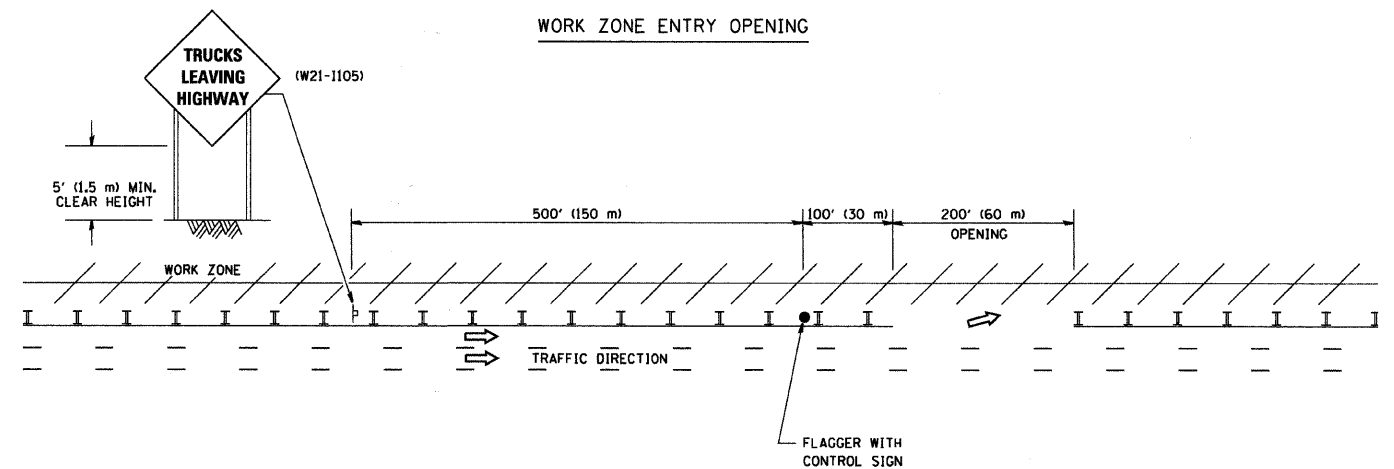
All dimensions are in inches (millimeters) unless otherwise shown.

SIGNING FOR FLAGGING OPERATIONS AT WORK ZONE OPENINGS

WORK ZONE EXIT OPENING



WORK ZONE ENTRY OPENING



NOTES:

1. The Arrowboard, the Flagger Ahead trailer mounted sign, and the Trucks Leaving Highway sign shall be removed or turned away from traffic and the exit and entry openings shall be closed when the flagging operation ceases.
2. Work Zone Exit Openings should be a minimum of one half mile apart.
3. Exiting the work zone at any place other than at a Work Zone Exit Opening will be prohibited.
4. All vehicles shall enter the work zone at entry openings, using their turn signals to warn motorists

ALL DIMENSIONS ARE IN INCHES (MILLIMETERS) UNLESS OTHERWISE SHOWN

FILE NAME =	USER NAME = #USER#	DESIGNED -	REVISED - D.W.S. 08-98
#FILE#		DRAWN -	REVISED - J.A.F. 04-03
	PLOT SCALE = #SCALE#	CHECKED -	REVISED - J.A.F. 02-06
	PLOT DATE = #DATE#	DATE -	REVISED - S.P.B. 01-07

STATE OF ILLINOIS
DEPARTMENT OF TRANSPORTATION

SIGNING FOR FLAGGING OPERATIONS
AT WORK ZONE OPENINGS

F.A.U. RTE.	SECTION	COUNTY	TOTAL SHEETS	SHEET NO.
0167	09-00366-00-RS	McHENRY	19	18
TC-18		CONTRACT NO. 63380		
FED. ROAD DIST. NO. 1 ILLINOIS FED. AID PROJECT				

SCALE: N.T.S. SHEET NO. 18 OF 20 SHEETS STA. TO STA.

