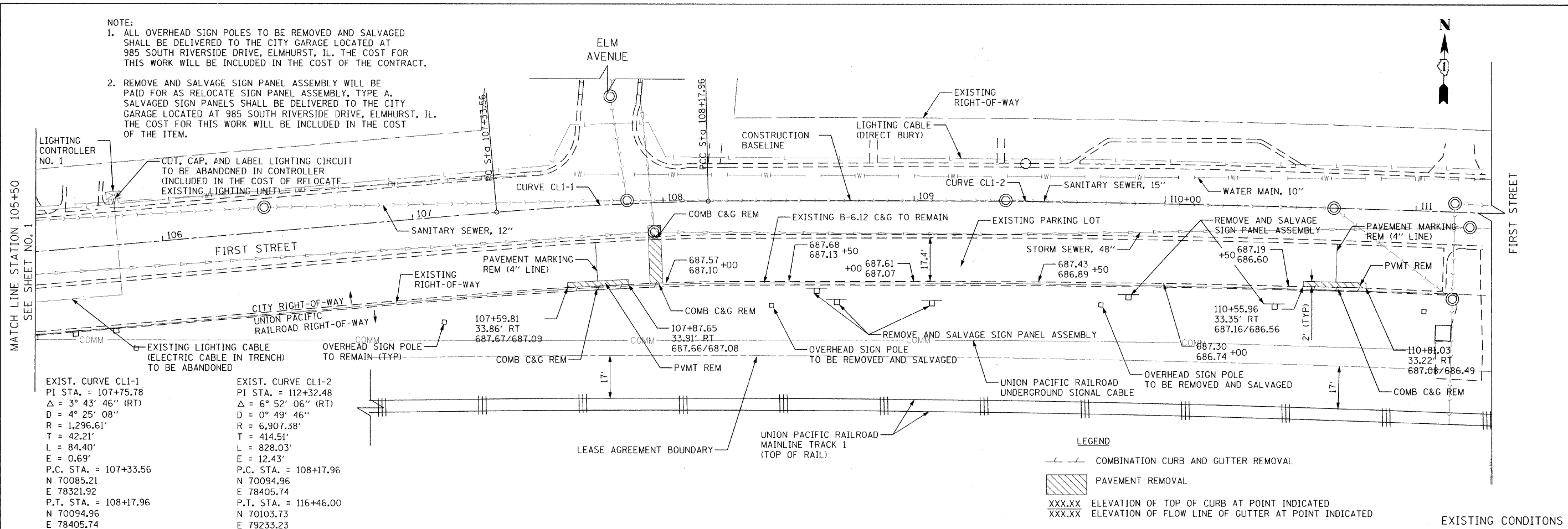


NOTE:

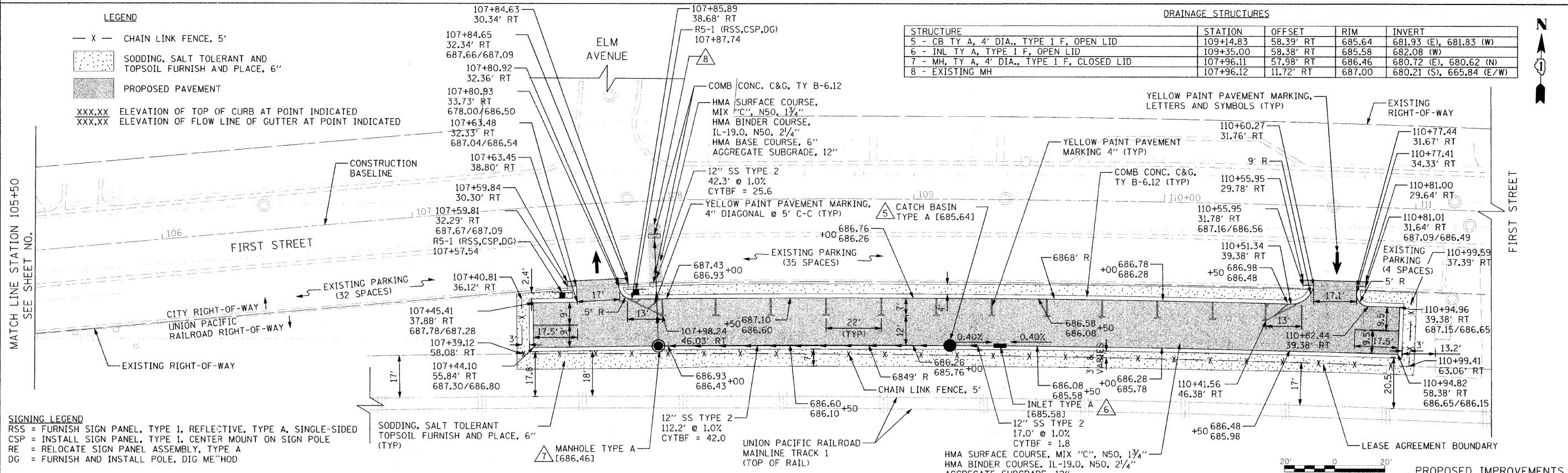
1. ALL OVERHEAD SIGN POLES TO BE REMOVED AND SALVAGED SHALL BE DELIVERED TO THE CITY GARAGE LOCATED AT 985 SOUTH RIVERSIDE DRIVE, ELMHURST, IL. THE COST FOR THIS WORK WILL BE INCLUDED IN THE COST OF THE CONTRACT.
2. REMOVE AND SALVAGE SIGN PANEL ASSEMBLY WILL BE PAID FOR AS RELOCATE SIGN PANEL ASSEMBLY, TYPE A. SALVAGED SIGN PANELS SHALL BE DELIVERED TO THE CITY GARAGE LOCATED AT 985 SOUTH RIVERSIDE DRIVE, ELMHURST, IL. THE COST FOR THIS WORK WILL BE INCLUDED IN THE COST OF THE ITEM.



EXIST. CURVE CL1-1	EXIST. CURVE CL1-2
PI STA. = 107+75.78	PI STA. = 112+32.48
Δ = 3° 43' 46" (RT)	Δ = 6° 52' 06" (RT)
D = 4° 25' 08"	D = 0° 49' 46"
R = 1,296.61'	R = 6,907.38'
T = 42.21'	T = 414.51'
L = 84.40'	L = 828.03'
E = 0.69'	E = 12.43'
P.C. STA. = 107+33.56	P.C. STA. = 108+17.96
N 70085.21	N 70094.96
E 78321.92	E 78405.74
P.T. STA. = 108+17.96	P.T. STA. = 116+46.00
N 70094.96	N 70103.73
E 78405.74	E 79233.23

LEGEND

- COMBINATION CURB AND GUTTER REMOVAL
- ▨ PAVEMENT REMOVAL
- XXX.XX ELEVATION OF TOP OF CURB AT POINT INDICATED
- XXX.XX ELEVATION OF FLOW LINE OF GUTTER AT POINT INDICATED



LEGEND

- X - CHAIN LINK FENCE, 5'
- ▨ SODDING, SALT TOLERANT AND TOPSOIL FURNISH AND PLACE, 6"
- ▨ PROPOSED PAVEMENT
- XXX.XX ELEVATION OF TOP OF CURB AT POINT INDICATED
- XXX.XX ELEVATION OF FLOW LINE OF GUTTER AT POINT INDICATED

DRAINAGE STRUCTURES

STRUCTURE	STATION	OFFSET	RIM	INVERT
5 - CB TY A, 4' DIA., TYPE 1 F, OPEN LID	109+14.83	58.39' RT	685.64	681.93 (E), 681.83 (W)
6 - INL TY A, TYPE 1 F, OPEN LID	109+35.00	58.38' RT	685.58	682.08 (W)
7 - MH, TY A, 4' DIA., TYPE 1 F, CLOSED LID	107+96.11	57.98' RT	686.46	680.72 (E), 680.62 (N)
8 - EXISTING MH	107+96.12	11.72' RT	687.00	680.21 (S), 665.84 (E/W)

SIGNING LEGEND

- RSS = FURNISH SIGN PANEL, TYPE 1, REFLECTIVE, TYPE A, SINGLE-SIDED
- CSP = INSTALL SIGN PANEL, TYPE 1, CENTER MOUNT ON SIGN POLE
- RE = RELOCATE SIGN PANEL ASSEMBLY, TYPE A
- DG = FURNISH AND INSTALL POLE, DIG METHOD