

F.A. RTE.	SECTION	COUNTY	TOTAL SHEETS	SHEET NO.
	09-00173-00-BT	COOK	20	2

CONTRACT NO: 63387

GENERAL NOTES

SPECIFICATIONS, STANDARDS AND SPECIAL PROVISIONS:

ALL CONSTRUCTION SHALL BE PERFORMED IN ACCORDANCE WITH THE ILLINOIS DEPARTMENT OF TRANSPORTATION "STANDARD SPECIFICATIONS FOR ROAD AND BRIDGE CONSTRUCTION", ADOPTED JANUARY 1, 2007. (HEREINAFTER REFERRED TO AS THE STANDARD SPECIFICATIONS); THE "SUPPLEMENTAL SPECIFICATIONS AND RECURRING SPECIAL PROVISIONS", ADOPTED JANUARY 1, 2010; THE LATEST EDITION OF THE "ILLINOIS MANUAL ON UNIFORM TRAFFIC CONTROL DEVICES FOR STREETS; THE "DETAILS" ON THE PLANS AND THE "SPECIAL PROVISIONS" INCLUDED IN THE CONTRACT DOCUMENTS. ANY REFERENCE TO STANDARDS THROUGHOUT THE PLANS OR SPECIAL PROVISIONS SHALL BE INTERPRETED AS THE LATEST STANDARD OF THE ILLINOIS DEPARTMENT OF TRANSPORTATION.

PROJECT COORDINATION:

THE CONTRACTOR SHALL NOTIFY THE VILLAGE ENGINEER AT LEAST 72 HOURS IN ADVANCE OF BEGINNING WORK AND SHALL COORDINATE ALL CONSTRUCTION OPERATIONS WITH THE ENGINEER. ATTENTION IS CALLED TO SECTION 701 OF THE STANDARD SPECIFICATIONS AND THE SPECIAL PROVISIONS FOR TRAFFIC CONTROL AND PROTECTION. THE STORAGE OF EQUIPMENT AND/OR MATERIALS WITHIN THE RIGHT-OF-WAY OF ANY STREET AND/OR ANY PARK PROPERTY SHALL REQUIRE PRIOR APPROVAL OF THE ENGINEER.

SAFETY:

ALL CONSTRUCTION PERSONNEL SHALL BE REQUIRED TO WEAR FLUORESCENT ORANGE, FLUORESCENT YELLOW/GREEN, OR A COMBINATION OF FLUORESCENT ORANGE AND FLUORESCENT YELLOW/GREEN SAFETY VESTS MEETING THE REQUIREMENTS OF THE AMERICAN NATIONAL STANDARDS INSTITUTE SPECIFICATION ANSI/ISEA 107-1999 FOR CONSPICUITY CLASS 2 GARMENTS AT ALL TIMES WHILE ON THE CONSTRUCTION SITE.

EXISTING UTILITIES:

EXISTING UTILITIES ARE SHOWN ON THE PLANS ACCORDING TO INFORMATION OBTAINED FROM THE VILLAGES OF OAK LAWN, CHICAGO RIDGE AND FIELD SURVEYS. THE ACCURACY AND COMPLETENESS OF SAID INFORMATION IS NOT GUARANTEED. IT SHALL BE THE CONTRACTOR'S RESPONSIBILITY TO VERIFY THE EXISTENCE, NATURE AND EXACT LOCATIONS OF ALL UTILITY LINES AND APPURTENANCES WITHIN THE LIMITS OF THE IMPROVEMENTS. THE CONTRACTOR SHALL GIVE PRIOR NOTIFICATION TO THE UTILITY COMPANIES AND THE VILLAGES OF OAK LAWN AND CHICAGO RIDGE OF HIS INTENTION TO BEGIN WORK. THE CONTRACTOR SHALL BE RESPONSIBLE FOR ANY DAMAGE OR DESTRUCTION OF PUBLIC OR PRIVATE PROPERTY, AND SHALL RESTORE SUCH PROPERTY AT HIS/HER EXPENSE.

THE CONTRACTOR SHALL BE RESPONSIBLE FOR CALLING J.U.L.I.E. AT TOLL FREE NUMBER 800-892-0123 AND THE VILLAGES OF OAK LAWN AND CHICAGO RIDGE PUBLIC WORKS DEPARTMENTS REQUESTING UTILITY LOCATION STAKING 48 HOURS PRIOR TO EXCAVATING.

UTILITY ADJUSTMENT / RECONSTRUCTION

ANY EXISTING UTILITY STRUCTURES REQUIRING ADJUSTMENT OR RECONSTRUCTION SHALL BE COMPLETED BY THE CONTRACTOR TO THE SATISFACTION OF THE UTILITY OWNER. ADJUSTMENTS AND/OR RECONSTRUCTIONS NOT CALLED OUT ON THE PLANS SHALL BE CONSIDERED INCLUDED IN THE COST OF THE CONTRACT. NO MORE THAN A TOTAL OF 12 INCHES OF ADJUSTING RINGS AND/OR 2 ADJUSTING RINGS SHALL BE ALLOWED.

TRAFFIC CONTROL AND MAINTENANCE:

THE CONTRACTOR SHALL SCHEDULE HIS WORK SO THAT ONLY ONE TEMPORARY LANE CLOSURE ON ONE STREET IN ONE DIRECTION IS IMPLEMENTED AT A TIME. A LANE CLOSURE WILL ONLY BE PERMITTED DURING CONSTRUCTION OPERATIONS AND IN ACCORDANCE WITH THE APPLICABLE IDOT STANDARDS. THE CONTRACTOR SHALL FURNISH, ERECT, MAINTAIN AND REPLACE AS NECESSARY ALL SIGNS, BARRICADES AND OTHER TRAFFIC CONTROL DEVICES, INCLUDING FLAGGERS, REQUIRED TO MAINTAIN TRAFFIC FLOW. THE CONTRACTOR SHALL SCHEDULE HIS WORK SO THAT NO HOLES IN THE PAVEMENT, AS DETERMINED BY THE ENGINEER, WILL REMAIN OPEN OVER NIGHT. ACCESS TO ABUTTING PROPERTY SHALL BE PROVIDED AT ALL TIMES DURING CONSTRUCTION OF THIS PROJECT. TIME REQUIRED FOR CONSTRUCTION AT DRIVEWAYS SHALL BE LIMITED TO THE MINIMUM TIME REQUIRED FOR SAID CONSTRUCTION AND, IF REQUIRED, TEMPORARY AGGREGATE SURFACE FOR DRIVEWAY ACCESS SHALL BE PROVIDED.

DISPOSAL OF EXCESS MATERIAL:

ALL EXCESS MATERIAL AND ANY OTHER DEBRIS SHALL BE PROPERLY DISPOSED OF BY THE CONTRACTOR AT AN OFF-SITE DISPOSAL AREA.

PROTECTION OF PUBLIC/PRIVATE PROPERTY:

THE CONTRACTOR SHALL PROTECT ALL EXISTING TREES, SHRUBS, FENCES, DRAIN LINES, POWER LINES, AND OTHER PUBLIC/PRIVATE PROPERTY. ANY ITEM THAT IS DAMAGED SHALL BE REPLACED OR REPAIRED BY THE CONTRACTOR AS DIRECTED BY THE ENGINEER AT NO ADDITIONAL COST TO THE CONTRACT.

SAW CUTTING FOR REMOVAL:

THE CONTRACTOR SHALL BE REQUIRED TO MAKE A FULL DEPTH SAW CUT AT THE EDGE OF PAVEMENT ADJACENT TO THE REMOVAL OF ALL CONCRETE CURB OR COMBINATION CONCRETE CURB AND GUTTER. THE CONTRACTOR SHALL MAKE ALL FULL DEPTH SAW CUTS REQUIRED FOR THE REMOVAL OF CONCRETE CURB AND GUTTERS, SIDEWALKS, AND DRIVEWAYS AS SPECIFIED, OR AS DIRECTED BY THE ENGINEER. THE COST SHALL BE CONSIDERED INCLUDED IN THE COST FOR REMOVAL OF THE SPECIFIED ITEM IN THE CONTRACT.

PAVEMENT REMOVAL:

THE ITEM OF PAVEMENT REMOVAL SHALL INCLUDE ALL SAW CUTS AND MILLING TO PROVIDE A NEAT, STRAIGHT PERPENDICULAR EDGE ADJACENT TO PAVEMENT TO REMAIN. THE COST SHALL BE CONSIDERED INCLUDED IN THE COST FOR PAVEMENT REMOVAL.

BIKE PATH SLOPE

AT LOCATIONS OF OVERLAND FLOW ACROSS THE BIKE PATH IT WILL BE THE CONTRACTOR'S RESPONSIBILITY TO SLOPE THE BIKE PATH 2% IN THE SAME DIRECTION AS THE ADJACENT CROSS SLOPE DRAINAGE TO MAINTAIN OVERLAND FLOW ACROSS THE BIKE PATH.

EXISTING STREET CLEANLINESS:

THE CONTRACTOR SHALL KEEP EXISTING ADJACENT STREETS CLEAN OF DIRT, MUD, AND OTHER DEBRIS AND, WHEN NECESSARY, CLEAN SAID PAVEMENTS ON A DAILY BASIS OR WHEN DIRECTED BY THE ENGINEER.

BASE COURSE CLEANING:

PRIOR TO APPLYING THE BITUMINOUS PRIME COAT, THE BASE SURFACE SHALL BE CLEANED OF ALL LOOSE LEAVES, DUST, DIRT, WEEDS AND OTHER FOREIGN MATERIALS. COST TO BE CONSIDERED INCLUDED IN THE COST OF THE HOT-MIX ASPHALT SURFACE COURSE, MIX "C", N50.

HOT-MIX ASPHALT PAVEMENTS:

FOR DESIGN AND QUANTITY ESTIMATION PURPOSES, THESE PLANS HAVE BEEN DEVELOPED USING 112.0 POUNDS PER SQUARE YARD PER INCH THICKNESS OF HOT-MIX ASPHALT SURFACE PAVEMENTS.

CLEAN-UP AND DISPOSAL:

THE CONTRACTOR SHALL MAINTAIN THE SITE IN A CLEAN AND ORDERLY MANNER, AS DETERMINED BY THE ENGINEER. DEBRIS AND ANY SURPLUS MATERIAL SHALL BE REMOVED AND RESTORATION SHALL PROCEED AS THE WORK PROCEEDS. IF THE OWNER OR THE ENGINEER SO DIRECTS, THE CONTRACTOR SHALL STOP ALL OTHER WORK AND CONCENTRATE ON CLEAN-UP AND RESTORATION. DEBRIS AND SURPLUS MATERIAL SHALL BE PROPERLY DISPOSED OF BY THE CONTRACTOR OFF-SITE.

CONSTRUCTION LIMITS:

THE CONTRACTOR SHALL CONFINE OPERATIONS WITHIN CONSTRUCTION LIMITS AS SHOWN ON THE PLANS. ANY DAMAGE OUTSIDE OF SAID CONSTRUCTION LIMITS SHALL BE REPAIRED AT THE CONTRACTOR'S EXPENSE.

LANDSCAPING RESTORATION:

ALL GRASSED AREAS OUTSIDE THE CONSTRUCTION LIMITS DAMAGED DURING CONSTRUCTION SHALL BE RESTORED WITH A MINIMUM OF 4" OF PULVERIZED TOP SOIL AND SEEDING, CLASS 2A. THIS WORK SHALL BE DONE AT THE CONTRACTOR'S EXPENSE.

PROPERTY ACCESS

DURING CONSTRUCTION, ALL SIGNS, BARRICADES, AND TEMPORARY PAVEMENT MARKINGS SHALL CONFORM TO THE ILLINOIS MUTCD. VEHICULAR ACCESS TO LOCAL PROPERTIES SHALL BE MAINTAINED AT ALL TIMES DURING CONSTRUCTION, EXCEPT WHEN CONSTRUCTION OPERATIONS OCCUR DIRECTLY ON OR IN FRONT OF ACCESS LOCATIONS. IN THIS CASE, FLAG PERSONS SHALL BE USED TO DIRECT AND CONTROL TRAFFIC.

BENCHMARKS:

- *1 NORTHWEST FLANGE BOLT OF FIRE HYDRANT AT NORTHWEST CORNER OF MELVINA AVENUE AND 101ST STREET = 594.38 FEET
- *2 NORTHWEST FLANGE BOLT OF FIRE HYDRANT AT NORTHWEST CORNER OF MOODY AVENUE AND 101ST STREET = 594.69 FEET
- *3 NORTHWEST FLANGE BOLT OF FIRE HYDRANT AT NORTHWEST CORNER OF MEADE AVENUE AND 101ST STREET = 592.74 FEET
- *4 NORTHEAST FLANGE BOLT OF FIRE HYDRANT IN CUL-DE-SAC OF MAJOR AVENUE BY PARK = 594.38 FEET
- *5 NORTHEAST FLANGE BOLT OF FIRE HYDRANT AT DEAD END ON 103RD STREET WEST OF MARSHALL AVENUE = 599.48 FEET
- *6 NORTHEAST FLANGE BOLT OF FIRE HYDRANT AT SOUTHEAST CORNER OF AUSTIN AVENUE AND 103RD STREET = 594.26 FEET

IDOT STANDARDS	
STANDARD NO.	DESCRIPTION
000001-05	STANDARD SYMBOLS, ABBREVIATIONS AND PATTERNS
280001-05	TEMPORARY EROSION CONTROL SYSTEMS
424001-05	CURB RAMPS FOR SIDEWALK
515001-03	NAME PLATE FOR BRIDGES
542301-02	PRECAST REINFORCED CONCRETE FLARED END SECTION
606001-04	CONCRETE CURB TYPE B AND COMBINATION CONCRETE CURB AND GUTTER
664001-02	CHAIN LINK FENCE
701006-03	OFF-ROAD OPERATIONS 2L, 2W, 15' TO 24" FROM PAVEMENT EDGE
701501-05	URBAN LANE CLOSURE 2L 2W UNDIVIDED
701901-01	TRAFFIC CONTROL DEVICES
720001-01	SIGN PANEL MOUNTING DETAILS
720006-02	SIGN PANEL ERECTION DETAILS
720011-01	METAL POSTS FOR SIGNS, MARKERS AND DELINEATORS
729001-01	APPLICATIONS OF TYPES A & B METAL POSTS (FOR SIGNS AND MARKERS)

SEDIMENTATION AND EROSION CONTROL NOTES

- A. SOIL DISTURBANCE SHALL BE CONDUCTED IN SUCH A MANNER AS TO MINIMIZE EROSION. SOIL STABILIZATION MEASURES SHALL CONSIDER THE TIME OF YEAR, SITE CONDITIONS AND THE USE OF TEMPORARY OR PERMANENT MEASURES.
- B. SOIL EROSION AND SEDIMENT CONTROL FEATURES SHALL BE CONSTRUCTED PRIOR TO THE COMMENCEMENT OF UPLAND DISTURBANCE.
- C. TEMPORARY SOIL STABILIZATION SHALL BE APPLIED TO DISTURBED AREAS WITHIN 14 CALENDAR DAYS OF THE END OF ACTIVE HYDROLOGIC DISTURBANCE. PERMANENT STABILIZATION SHALL BE DONE WITHIN 14 DAYS AFTER COMPLETION OF FINAL GRADING OF SOIL.
- D. ALL STORM SEWER FACILITIES THAT ARE OR WILL BE FUNCTIONING DURING CONSTRUCTION SHALL BE PROTECTED, FILTERED, OR OTHERWISE TREATED TO REMOVE SEDIMENT.
- E. ALL TEMPORARY EROSION AND SEDIMENT CONTROL MEASURES SHALL BE REMOVED WITHIN 30 DAYS AFTER FINAL SITE STABILIZATION IS ACHIEVED OR AFTER THE TEMPORARY MEASURES ARE NO LONGER NEEDED, IN THE OPINION OF THE ENGINEER. TRAPPED SEDIMENT AND OTHER DISTURBED SOIL AREAS SHALL BE PERMANENTLY STABILIZED.
- F. ALL TEMPORARY AND PERMANENT EROSION CONTROL MEASURES SHALL BE MAINTAINED AND REPAIRED AS NEEDED. THE GENERAL CONTRACTOR SHALL BE RESPONSIBLE FOR INSPECTION AND REPAIR DURING CONSTRUCTION.
- G. THE EROSION CONTROL MEASURES INDICATED ON THE PLANS ARE THE MINIMUM REQUIREMENTS. ADDITIONAL MEASURES MAY BE REQUIRED, AS DIRECTED BY THE ENGINEER OR GOVERNING AGENCY.

REVISIONS	
NAME	DATE

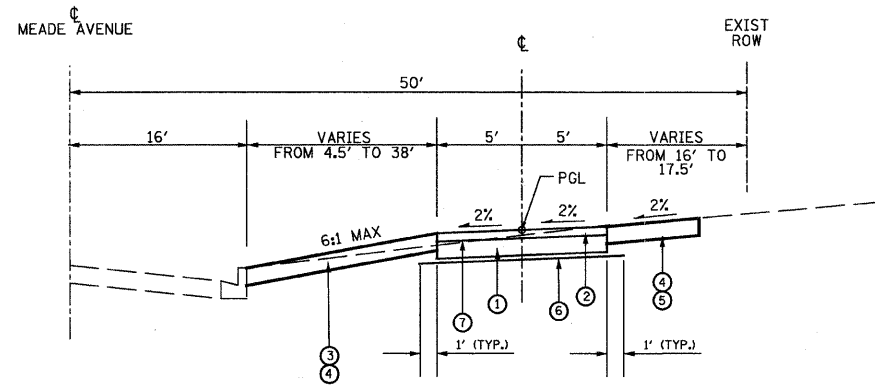
URS 100 S. WACKER DR., SUITE 500 TEL: (312) 939-1000
CHICAGO, IL, 60606 FAX: (312) 939-4198

VILLAGE OF OAK LAWN

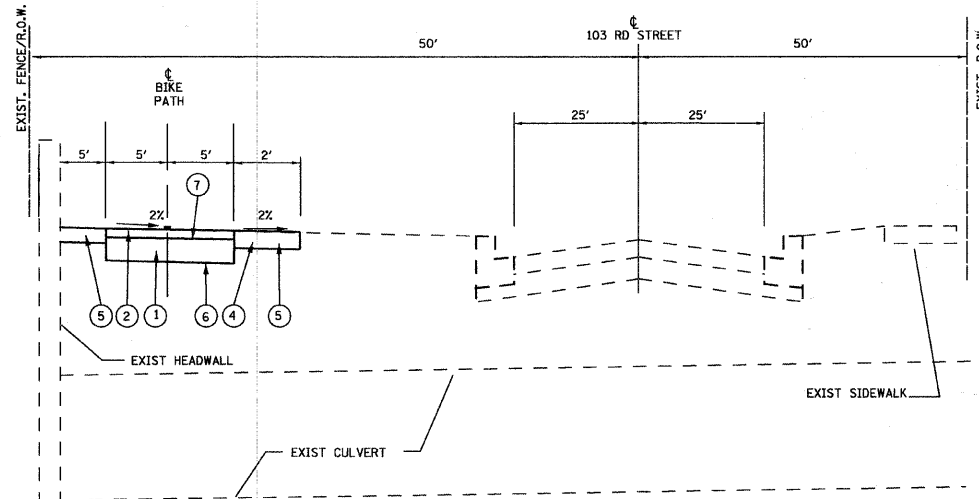
STONY CREEK BIKE TRAIL GENERAL NOTES AND STANDARDS

SCALE: NTS
DATE: 12/01/09

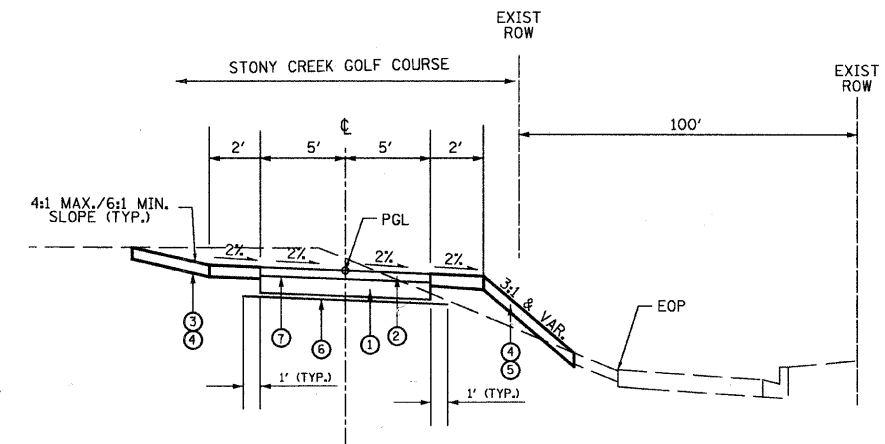
DRAWN BY: MIA
CHECKED BY: YOO



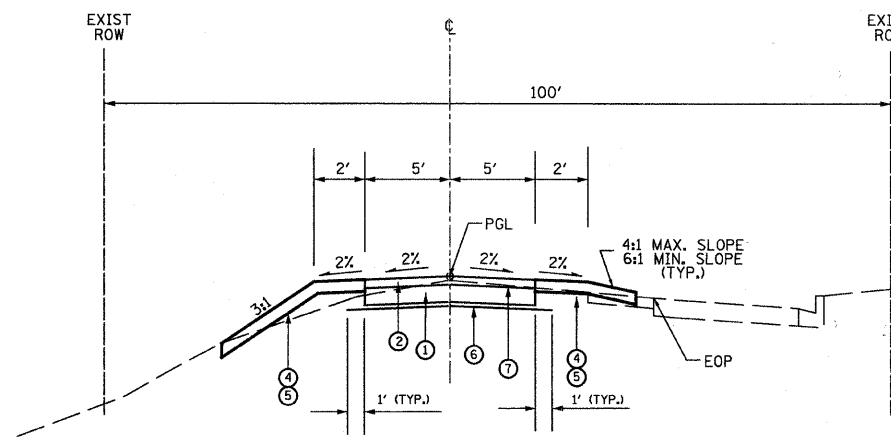
**PROPOSED TYPICAL SECTION
MEADE AVENUE
STA. 10+20 TO STA. 17+22.73**



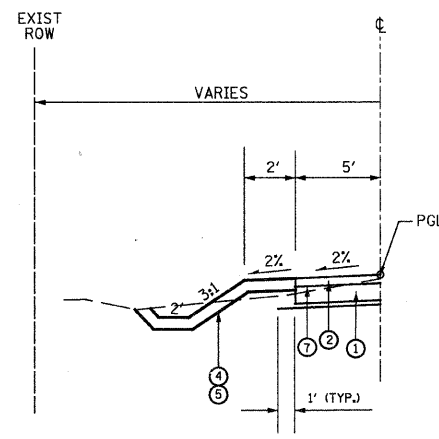
**PROPOSED TYPICAL SECTION
103rd STREET
STA. 124+20 TO STA. 125+69**



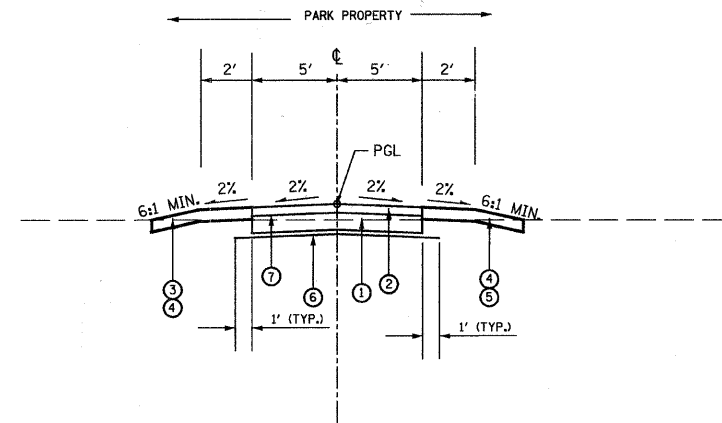
**PROPOSED TYPICAL SECTION
103rd STREET
STA. 100+00 TO STA. 108+00
STA. 115+00 TO STA. 125+99.72**



**PROPOSED TYPICAL SECTION
103rd STREET
STA. 108+00 TO STA. 115+00**



**PROPOSED TYPICAL SECTION
103rd STREET
STA. 111+00 TO STA. 114+00**



**PROPOSED TYPICAL SECTION
SPUR TO PARKING LOT
STA. 130+00 TO STA. 132+06.34**

LEGEND

- ① AGGREGATE BASE COURSE, TYPE B, 6 INCH
- ② HOT MIX ASPHALT SURFACE COURSE, MIX "C", N50, (IL 9.5 mm), 3 INCH
- ③ SODDING, SALT TOLERANT
- ④ TOPSOIL FURNISH AND PLACE, 6 INCH
- ⑤ SEEDING, CLASS 2A
- ⑥ GEOTECHNICAL FABRIC FOR GROUND STABILIZATION
- ⑦ PRIME COAT

HOT-MIX ASPHALT MIXTURE REQUIREMENTS

ITEM	% VOIDS @ Ndes
HOT-MIX ASPHALT SURFACE COURSE MIX "C", N50 (IL 9.5mm); 3"	4% @ 50 Gyr.
LEVELING BINDER (HAND METHOD), N50 (IL 9.5mm)	4% @ 50 Gyr.

THE UNIT WEIGHT USED TO CALCULATE ALL HMA SURFACE MIXTURE QUANTITIES IS 112 LBS/50 YD³/IN

THE "AC TYPE" FOR POLYMERIZED HMA MIXES SHALL BE "SBS/SBR PG 70-22" AND FOR NON-POLYMERIZED HMA THE "AC TYPE" SHALL BE "PG 64-22" UNLESS MODIFIED BY DISTRICT ONE SPECIAL PROVISIONS. FOR "PERCENT OF RAP" SEE DISTRICT ONE SPECIAL PROVISIONS.

NOTE 1:
THE EXCAVATED MATERIAL CAN BE EITHER UNSUITABLE OR UNSTABLE MATERIAL WHICH IS TO BE DETERMINED BY THE ENGINEER AT THE TIME OF CONSTRUCTION. UNDERCUT DEPTHS ARE NOT A STANDARD 12 INCHES. DEPTHS OF UNDERCUTS SHALL BE DETERMINED BY THE ENGINEER DURING CONSTRUCTION.

NOTE 2:
GEOTECHNICAL FABRIC FOR GROUND STABILIZATION SHALL BE ONLY USED IN AREAS RECOMMENDED OR AS DETERMINED AT THE TIME OF CONSTRUCTION, BOTH AS DETERMINED BY THE ENGINEER.

NOTE 3:
PORTLAND CEMENT CONCRETE SIDEWALK 6" SHOULD BE PLACED ON LOCATIONS ACCORDING TO DETAIL ON SHEET NO. 9

NOTE 4:
WHERE CROSS DRAINAGE ACROSS THE PATH IS SHOWN ON THE CROSS SECTIONS, THE CONTRACTOR SHALL PROVIDE A CONSTANT CROSS SLOPE IN THE DIRECTION OF THE GROUND SLOPE.

REVISIONS	
NAME	DATE

URS 100 S. WACKER DR., SUITE 500 TEL (312) 939-1000
CHICAGO, IL, 60606 FAX (312) 939-4198

VILLAGE OF OAK LAWN

STONY CREEK BIKE TRAIL

PROPOSED TYPICAL SECTIONS

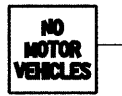
SCALE: NTS DRAWN BY: MIA
DATE: 12/01/09 CHECKED BY: Y00

LEGEND

- SWALE TIP
- DITCH SUMMIT
- DITCH CHECK
- PROPOSED CULVERT
- EXISTING MANHOLE
- EXISTING FENCE
- REINFORCED CONCRETE END SECTION
- INLET AND PIPE PROTECTION
- TREE REMOVAL
- PERIMETER EROSION BARRIER



RI-1
18" X 18"
10 LF, TYPE A POST



RS-3
24" X 24"
10.5 LF, TYPE A POST
(MOUNT SIGNS
BACK TO BACK)

STA. 100+00
BEGIN PROPOSED
BIKE TRAIL
MEET EXISTING GRADE
N: 1,835,594.87
E: 1,136,603.85

DETECTABLE WARNINGS
(2'x10')

BEMARE OF GOLF BALLS
D11-1
24" X 18"
10 LF, TYPE A POST

PROP. CURVE 103RD-1
PI STA. = 100+64.81
 $\Delta = 5^\circ 20' 32''$ (LT)
D = 11' 27' 33"
R = 500.00'
T = 23.33'
L = 46.62'
E = 0.54'
P.C. STA. = 100+41.49
P.T. STA. = 100+88.11
N: 1,835,612.06
E: 1,136,651.47

PROP. CURVE 103RD-2
PI STA. = 102+12.74
 $\Delta = 9^\circ 20' 41''$ (RT)
D = 11' 27' 33"
R = 500.00'
T = 40.86'
L = 81.55'
E = 1.67'
P.C. STA. = 101+71.88
P.T. STA. = 102+53.43
N: 1,835,625.84
E: 1,136,798.79

PROP. CURVE 103RD-3
PI STA. = 103+17.59
 $\Delta = 4^\circ 58' 27''$ (LT)
D = 9' 32' 57"
R = 600.00'
T = 26.06'
L = 52.09'
E = 0.57'
P.C. STA. = 102+91.53
P.T. STA. = 103+43.62
N: 1,835,618.51
E: 1,136,903.56

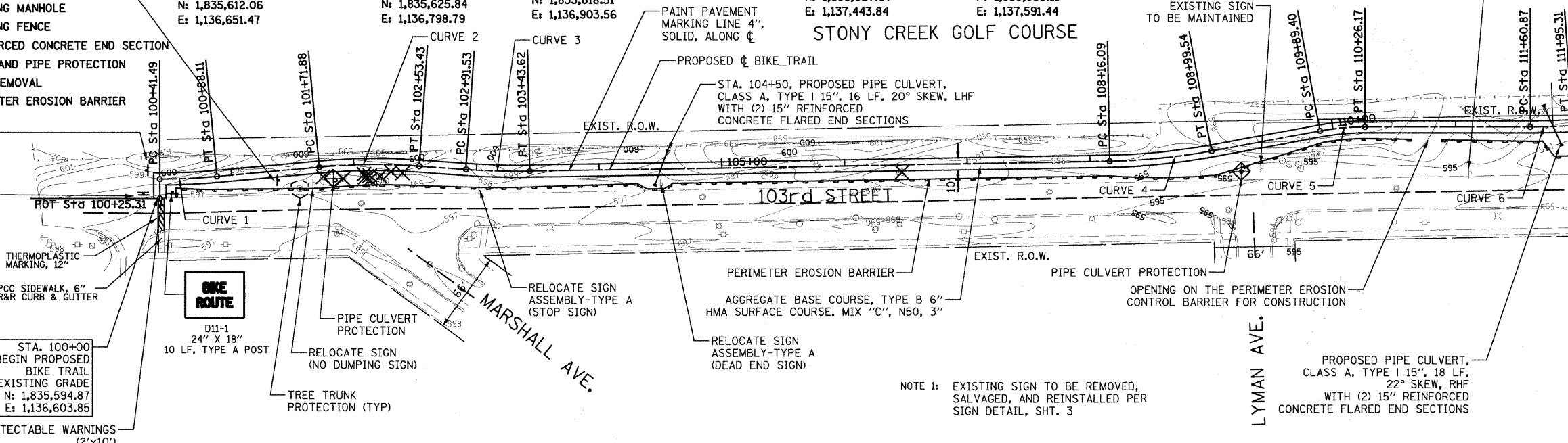
PROP. CURVE 103RD-4
PI STA. = 108+57.91
 $\Delta = 9^\circ 33' 43''$ (LT)
D = 11' 27' 33"
R = 500.00'
T = 41.82'
L = 83.44'
E = 1.75'
P.C. STA. = 108+16.09
P.T. STA. = 108+99.54
N: 1,835,627.67
E: 1,137,443.84

PROP. CURVE 103RD-5
PI STA. = 110+07.84
 $\Delta = 10^\circ 32' 01''$ (RT)
D = 28' 38' 52"
R = 200.00'
T = 18.44'
L = 36.77'
E = 0.85'
P.C. STA. = 109+89.40
P.T. STA. = 110+26.17
N: 1,835,655.11
E: 1,137,591.44

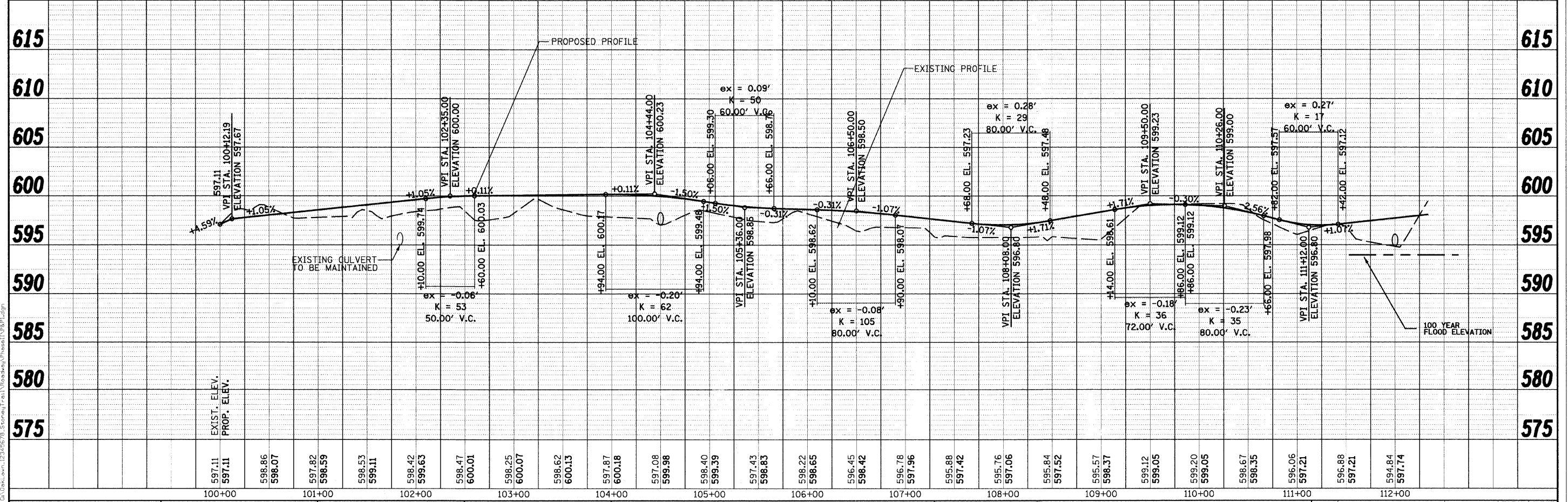
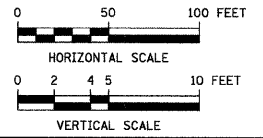
PROP. CURVE 103RD-6
PI STA. = 111+78.09
 $\Delta = 3^\circ 56' 48''$ (LT)
D = 11' 27' 33"
R = 500.00'
T = 17.23'
L = 34.44'
E = 0.30'
P.C. STA. = 111+60.87
P.T. STA. = 111+95.31
N: 1,835,655.11
E: 1,137,761.79



STONY CREEK GOLF COURSE



NOTE 1: EXISTING SIGN TO BE REMOVED,
SALVAGED, AND REINSTALLED PER
SIGN DETAIL, SHT. 3



USER NAME = #USER#
DESIGNED - MIA
DRAWN - MIA
CHECKED - DDL
PLOT DATE = 12/2/2009

DESIGNED - MIA
CHECKED - DDL
DATE - 12/01/09

REVISED -
REVISED -
REVISED -
REVISED -

**STATE OF ILLINOIS
DEPARTMENT OF TRANSPORTATION**

**STONY CREEK BIKE TRAIL
PLAN AND PROFILE**
SCALE: 1"=50', 1"=5' SHEET NO. 1 OF 4 SHEETS STA. 100+00 TO STA. 112+00

F.A. RTE.	SECTION	COUNTY	TOTAL SHEETS	SHEET NO.
	09-00173-00-BT	COOK	20	5
FED. ROAD DIST. NO.	ILLINOIS FED. AID PROJECT		CONTRACT NO. 63387	

PLAN	DATE
BY	
CHECKED	
DATE	

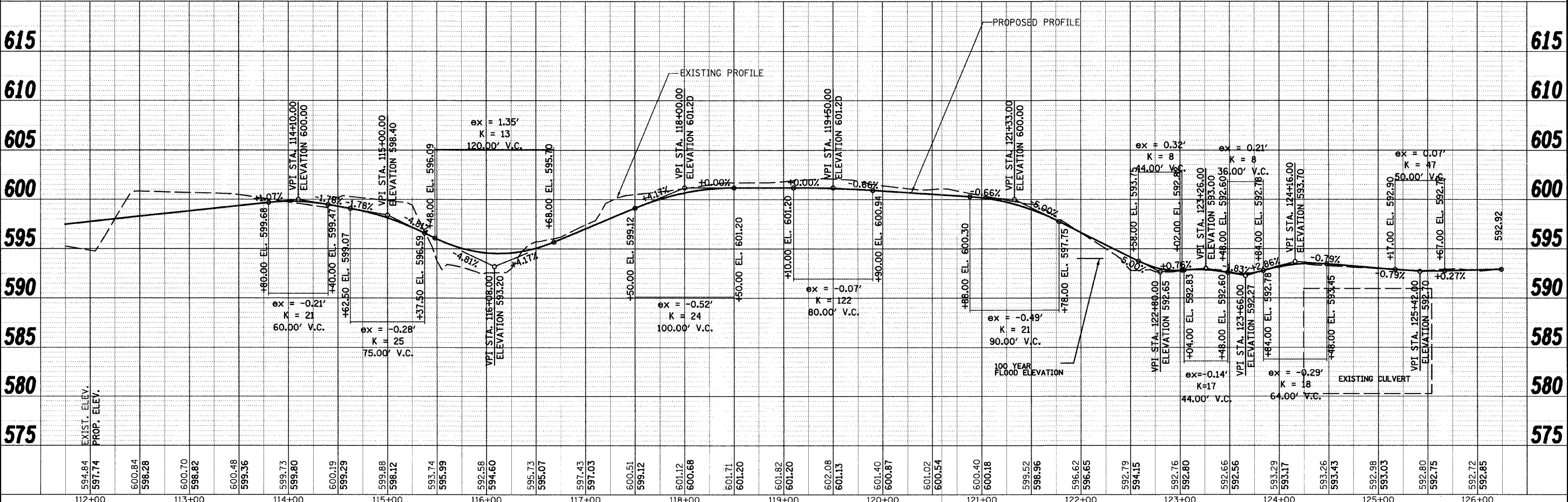
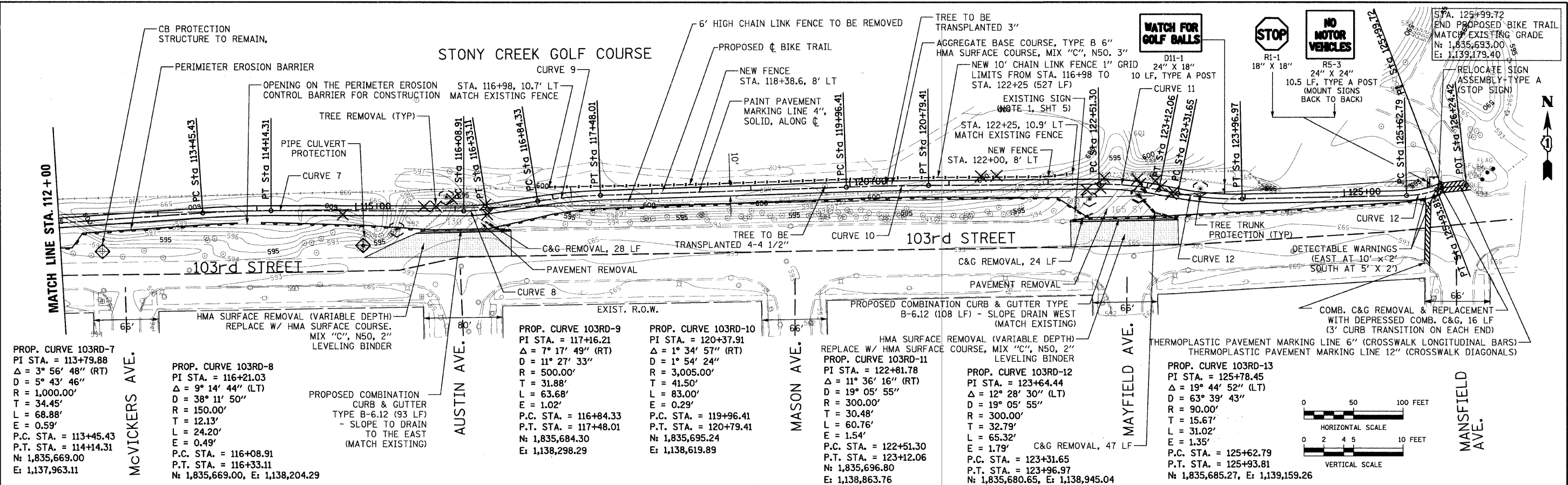
PROFILE	DATE
BY	
CHECKED	
DATE	

FILE NAME: G:\Users\m12345678\OneDrive\Projects\Roadway\Phase1\VP&P\VP.dgn

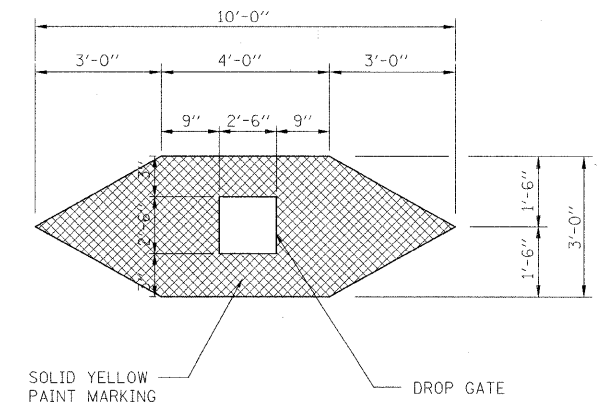
DATE	
BY	
REVISIONS	
NO.	DESCRIPTION
1	ISSUED FOR PERMITS
2	ISSUED FOR CONSTRUCTION
3	ISSUED FOR AS-BUILT
4	ISSUED FOR RECORD
5	ISSUED FOR FINAL

DATE	
BY	
REVISIONS	
NO.	DESCRIPTION
1	ISSUED FOR PERMITS
2	ISSUED FOR CONSTRUCTION
3	ISSUED FOR AS-BUILT
4	ISSUED FOR RECORD
5	ISSUED FOR FINAL

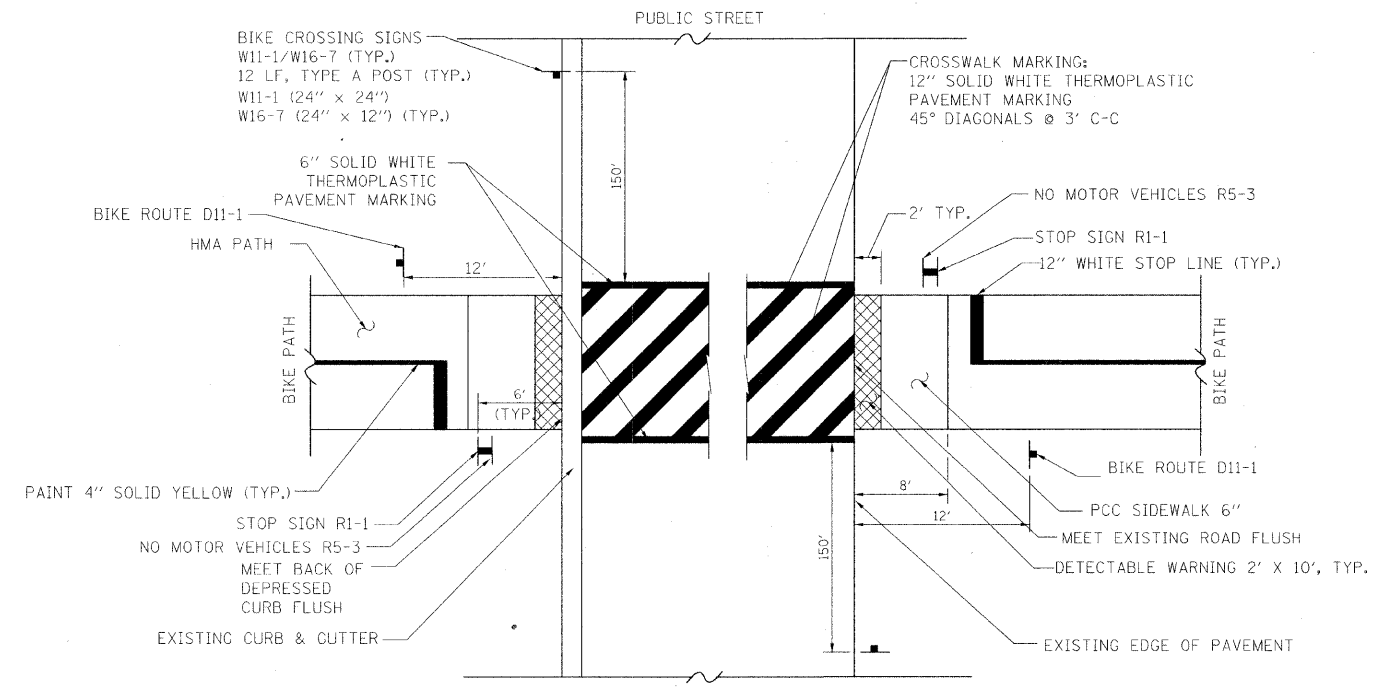
FILE NAME: G:\DakLawn\12345678_Sonoma_Traffic\Roadways\Phase1\VP\PP2.dgn



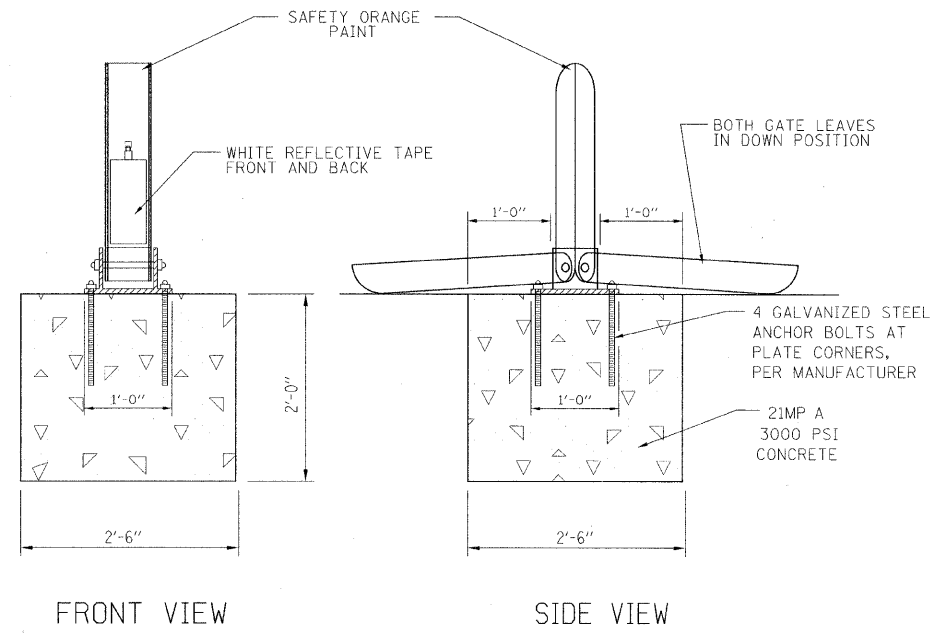
URS	USER NAME = #USER#	DESIGNED - MIA	REVISED -	STATE OF ILLINOIS DEPARTMENT OF TRANSPORTATION	STONY CREEK BIKE TRAIL PLAN AND PROFILE	F.A. RTE.	SECTION	COUNTY	TOTAL SHEETS	SHEET NO.
	PLDT SCALE = 49.4952' / IN.	DRAWN - MIA	REVISED -			09-00173-00-BT	COOK	20	6	
	PLDT DATE = 12/2/2009	CHECKED - DDL	REVISED -			SCALE: 1"=50', 1"=5'	SHEET NO. 2 OF 4 SHEETS	STA. 112+00 TO STA. 125+99.72	FED. ROAD DIST. NO.	ILLINOIS FED. AID PROJECT
		DATE - 12/01/09	REVISED -							



DROP GATE MARKING DETAIL
N.T.S.

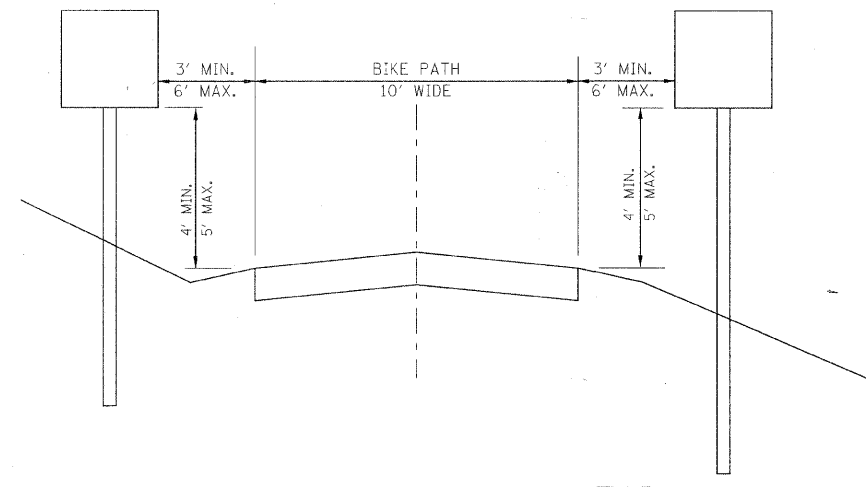


STREET INTERSECTION SIGN AND PAVEMENT MARKING DETAIL
N.T.S.



DROP GATE INSTALLATION DETAIL
N.T.S.

NOTE:
DROP GATE ASSEMBLIES ARE FURNISHED BY THE CONTRACTOR



SIGN PLACEMENT DETAIL

REVISIONS	
NAME	DATE

URS 100 S. WACKER DR., SUITE 500 TEL (312) 939-1000
CHICAGO IL, 60606 FAX (312) 939-4198

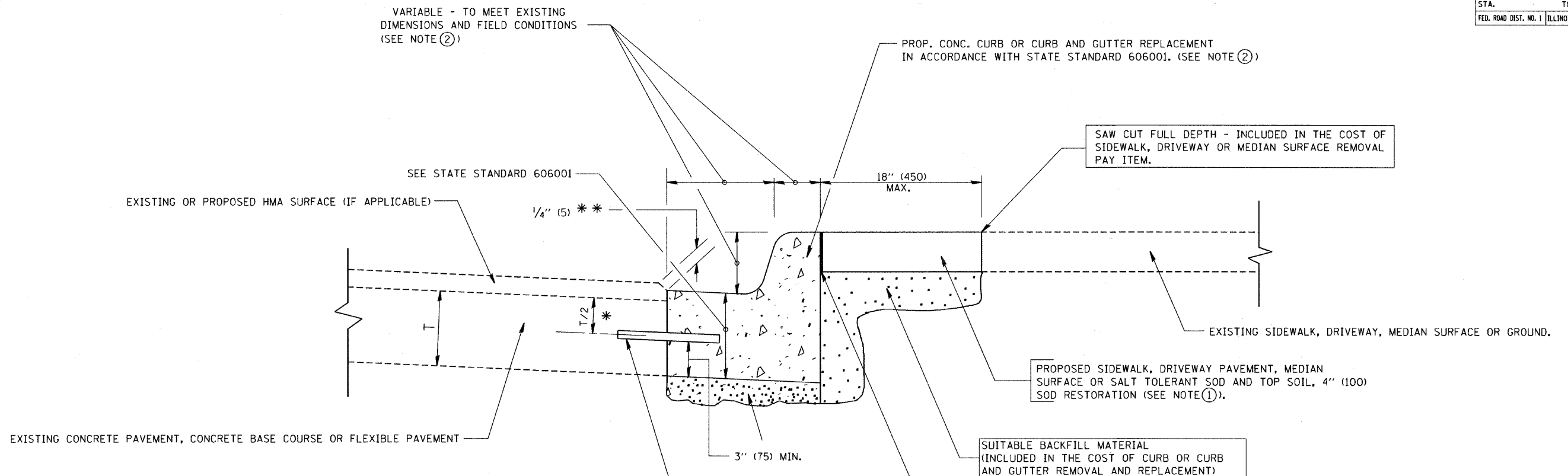
VILLAGE OF OAK LAWN

STONY CREEK BIKE TRAIL
MISCELLANEOUS DETAILS

SCALE: NTS
DATE: 12/01/09

DRAWN BY: MIA
CHECKED BY: YOO

CONTRACT NO. 03387			
F.A. RTE.	SECTION	COUNTY	TOTAL SHEET NO.
	09-0073-00-01	COOK	20 10
STA.	TO STA.		
FED. ROAD DIST. NO. 1	ILLINOIS	FED. AID PROJECT	



- * 3" (75) MINIMUM FROM TOP AND BOTTOM OF THE CONCRETE PAVEMENT OR BASE COURSE.
- * * IF THE FINAL SURFACE OF THE PAVEMENT IS CONCRETE, THE GUTTER IS TO BE FLUSH WITH THE PAVEMENT.

NOTE: ① SIDEWALK, DRIVEWAY PAVEMENT OR MEDIAN SURFACE SHALL BE SIMILAR TO THE MATERIAL BEING REMOVED AND WILL BE PAID FOR SEPARATELY.

SALT TOLERANT SOD AND TOP SOIL, 4" (100) RESTORATION WILL NOT BE PAID FOR SEPARATELY, BUT SHALL BE INCLUDED IN THE COST OF CURB OR CURB AND GUTTER REMOVAL AND REPLACEMENT.

- ② CURB OR CURB AND GUTTER REPLACEMENT SHALL MATCH THE SHAPE OF THE EXISTING CURB OR CURB AND GUTTER UNLESS OTHERWISE SPECIFIED.
- ③ FOR CURB OR CURB AND GUTTER REMOVAL AND REPLACEMENT ADJACENT TO FLEXIBLE PAVEMENT DELETE EPOXY COATED TIE BARS.
- ④ LONGITUDINAL BARS, IF ENCOUNTERED IN THE EXISTING CURB OR CURB AND GUTTER, ARE NOT TO BE REPLACED. CUTTING AND REMOVING LONGITUDINAL BARS SHALL BE INCLUDED IN THE COST OF CURB OR CURB AND GUTTER REMOVAL AND REPLACEMENT.
- ⑤ THE COST OF HMA SURFACE REMOVAL IN THE EXISTING GUTTER FLAG SHALL BE INCLUDED IN THE COST OF THE CURB AND GUTTER REMOVAL AND REPLACEMENT.
- ⑥ THE REMOVAL AND REPLACEMENT OF THE EXISTING CURB OR CURB AND GUTTER SHALL BE DONE IN ACCORDANCE WITH THE APPLICABLE PORTIONS OF SECTION 440 AND 606 OF THE STANDARD SPECIFICATIONS.
- ⑦ THE LOCATIONS OF REMOVAL AND REPLACEMENT OF EXISTING CURB OR CURB AND GUTTER SHALL BE DETERMINED BY THE RESIDENT ENGINEER AT THE TIME OF CONSTRUCTION.

UNSUITABLE SUB-BASE MATERIAL TO BE REMOVED, IF DIRECTED BY THE ENGINEER, SHALL BE REPLACED WITH EITHER SUB-BASE GRANULAR MATERIAL, TYPE B OR ADDITIONAL THICKNESS OF CONCRETE.

REMOVAL AND REPLACEMENT 4" (100) OR LESS IS INCLUDED IN THE COST OF CURB OR CURB AND GUTTER REMOVAL AND REPLACEMENT.

REMOVAL AND REPLACEMENT IN EXCESS OF 4" (100) WILL BE PAID FOR IN ACCORDANCE WITH ARTICLE 109.04 OF THE STANDARD SPECIFICATIONS.

PROPOSED #6 (20) EPOXY COATED TIE BARS 24" (600) LONG AT 24" (600) CENTERS WILL NOT BE PAID FOR SEPARATELY. DELETE EPOXY COATED TIE BARS IF EXISTING TIE BARS ARE USUABLE AS DETERMINED BY THE ENGINEER. (SEE NOTE ③).

BASIS OF PAYMENT:
THIS WORK WILL BE PAID FOR AT THE CONTRACT UNIT PRICE PER FOOT (METER) FOR "CURB REMOVAL AND REPLACEMENT" OR "COMBINATION CONCRETE CURB AND GUTTER REMOVAL AND REPLACEMENT".

ALL DIMENSIONS ARE IN INCHES (MILLIMETERS) UNLESS OTHERWISE SHOWN.

REVISIONS	
NAME	DATE
A. HOUSEH	03/11/94
R. SHAH	02/24/95
R. SHAH	03/02/95
R. SHAH	08/19/96
R. SHAH	09/12/96
R. SHAH	09/19/96
R. SHAH	10/03/96
A. ABBAS	03/21/97
M. COMEZ	01/22/01
R. BORO	01/01/07

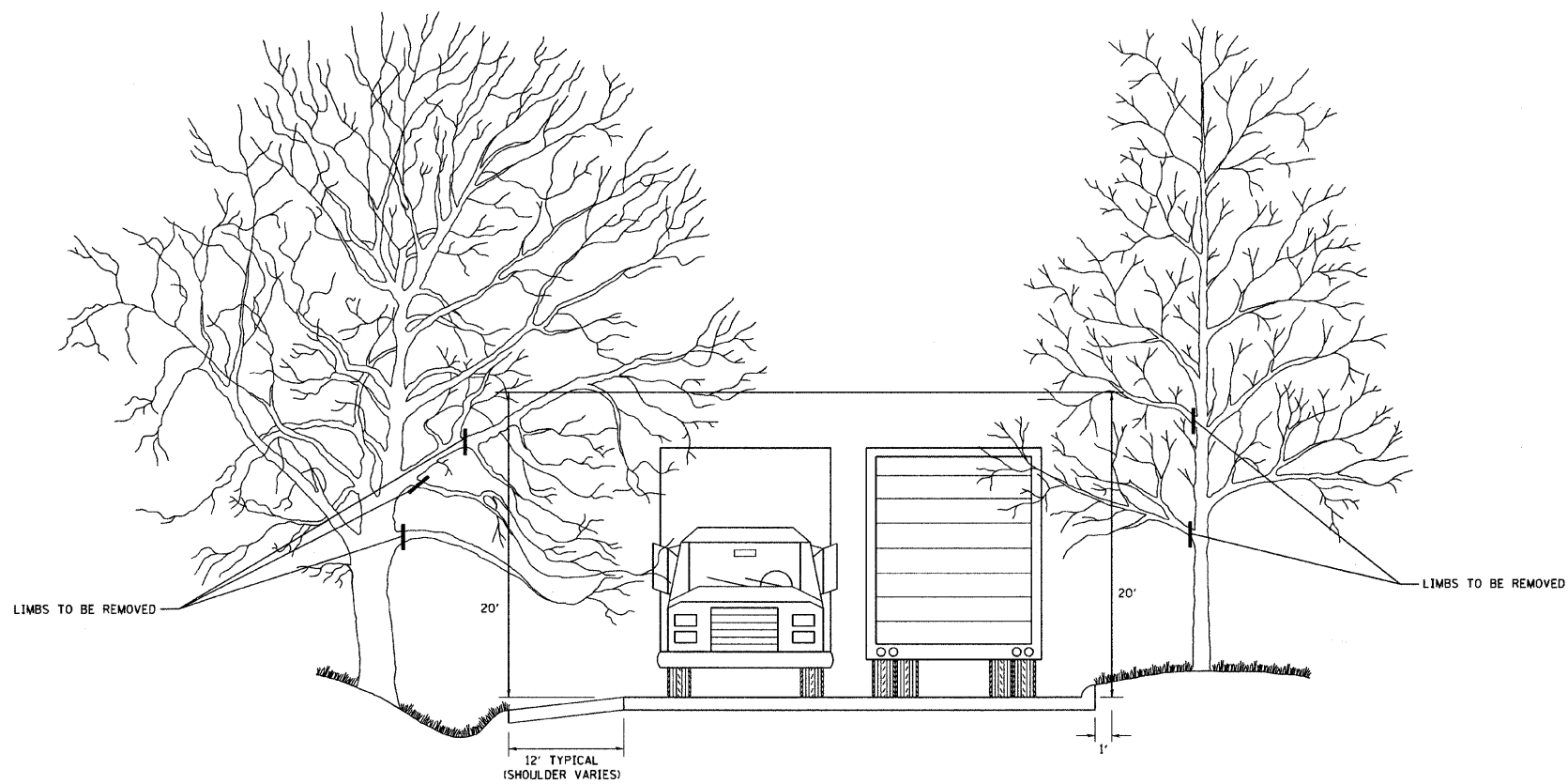
ILLINOIS DEPARTMENT OF TRANSPORTATION
CURB OR CURB AND GUTTER REMOVAL AND REPLACEMENT

SCALE: VERT. NONE
HORIZ.
DRAWN BY
CHECKED BY
BD600-06 (BD-24)

CURB OR CURB AND GUTTER REMOVAL AND REPLACEMENT

PLOT DATE = 3/15/2007
FILE NAME = K:\dashed\bd600.dgn
PLOT SCALE = 1/8" = 1'-0"
USER NAME = bborod

F.A. RTE.	SECTION	COUNTY	TOTAL SHEETS	SHEET NO.
	09-00173-00-87	COOK	20	11
STA.		TO STA.		
FED. ROAD DIST. NO. 1		ILLINOIS	FED. AID PROJECT	



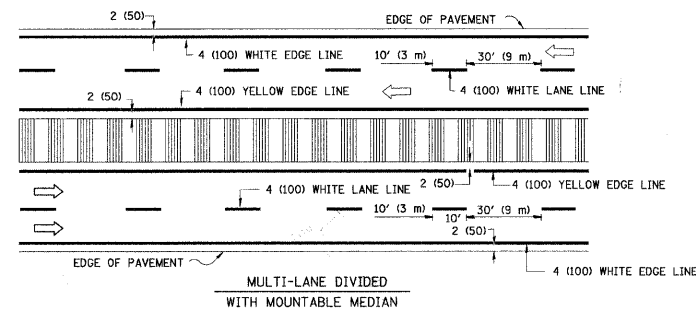
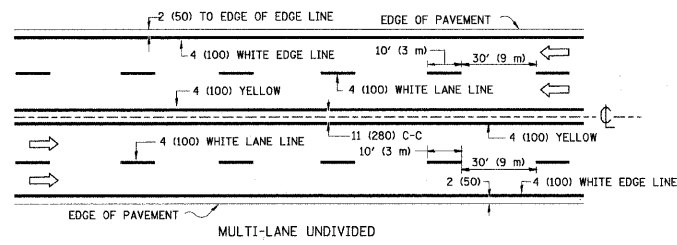
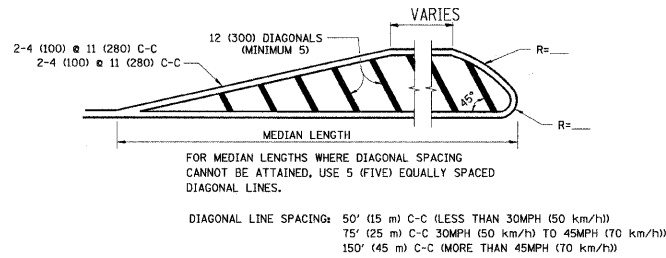
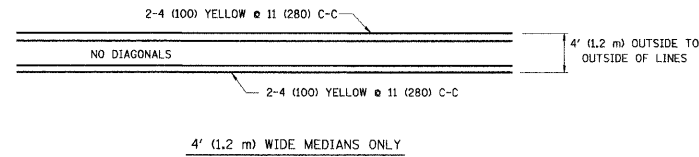
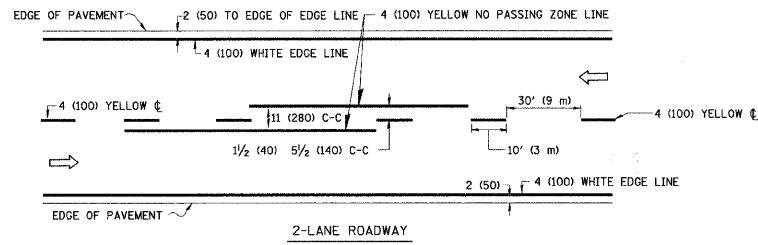
REVISIONS	
NAME	DATE
R. BORO	10/31/06

ILLINOIS DEPARTMENT OF TRANSPORTATION

PRUNING FOR SAFETY AND EQUIPMENT CLEARANCE

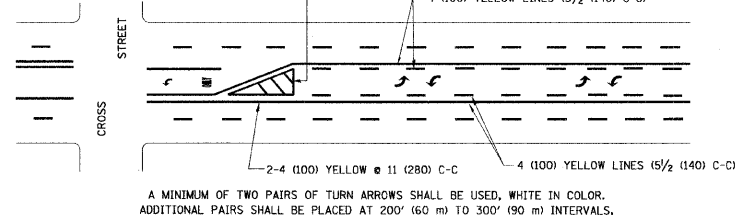
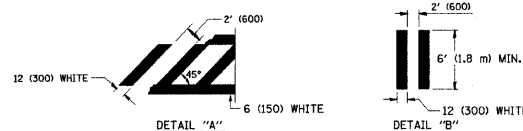
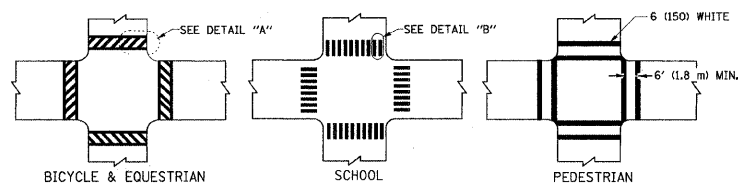
SCALE: NONE

DRAWN BY CADD
CHECKED BY BM-20



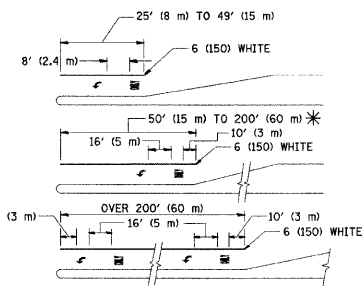
NOTE: MEDIANS WITH BARRIER CURB DO NOT REQUIRE AN EDGE LINE

TYPICAL LANE AND EDGE LINE MARKING



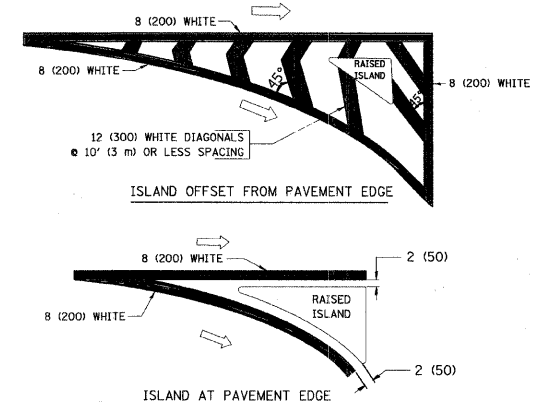
TYPICAL PAINTED MEDIAN MARKING

TYPICAL LEFT (OR RIGHT) TURN LANE



FULL SIZE LETTERS 8' (2.4 m) AND ARROWS SHALL BE USED.
 * AREA = 15.6 SQ. FT. (1.5 m²) □ AREA = 20.8 SQ. FT. (1.9 m²)
 * TURN LANES IN EXCESS OF 400' (120 m) IN LENGTH MAY HAVE AN ADDITIONAL SET OF ARROW - "ONLY" INSTALLED MIDWAY BETWEEN THE OTHER TWO SETS OF ARROW - "ONLY".

TYPICAL TURN LANE MARKING



TYPICAL ISLAND MARKING

TYPE OF MARKING	WIDTH OF LINE	PATTERN	COLOR	SPACING / REMARKS
CENTERLINE ON 2 LANE PAVEMENT	4 (100)	SKIP-DASH	YELLOW	10' (3 m) LINE WITH 30' (9 m) SPACE
CENTERLINE ON MULTI-LANE UNDIVIDED PAVEMENT	2 @ 4 (100)	SOLID	YELLOW	11 (280) C-C
NO PASSING ZONE LINES FOR ONE DIRECTION FOR BOTH DIRECTIONS	4 (100) 2 @ 4 (100)	SOLID SOLID	YELLOW YELLOW	5/2 (140) C-C FROM SKIP-DASH CENTERLINE 11 (280) C-C OMIT SKIP-DASH CENTERLINE BETWEEN
LANE LINES	4 (100) 5 (125) ON FREEWAYS	SKIP-DASH SKIP-DASH	WHITE WHITE	10' (3 m) LINE WITH 30' (9 m) SPACE
DOTTED LINES (EXTENSIONS OF CENTER, LANE OR TURN LANE MARKINGS)	SAME AS LINE BEING EXTENDED	SKIP-DASH	SAME AS LINE BEING EXTENDED	2' (600) LINE WITH 6' (1.8 m) SPACE
EDGE LINES	4 (100)	SOLID	YELLOW-LEFT WHITE-RIGHT	OUTLINE MOUNTABLE MEDIANS IN YELLOW. EDGE LINES ARE NOT USED NEXT TO BARRIER CURB
TURN LANE MARKINGS	6 (150) LINE, FULL SIZE LETTERS & SYMBOLS (8' (2.4m))	SOLID	WHITE	SEE TYPICAL TURN LANE MARKING DETAIL
TWO WAY LEFT TURN MARKING	2 @ 4 (100) EACH DIRECTION 8' (2.4m) LEFT ARROW	SKIP-DASH AND SOLID IN PAIRS	YELLOW WHITE	10' (3 m) LINE WITH 30' (9 m) SPACE FOR SKIP-DASH; 5/2 (140) C-C BETWEEN SOLID LINE AND SKIP-DASH LINE SEE TYPICAL TWO-WAY LEFT TURN MARKING DETAIL
CROSSWALK LINES (PEDESTRIAN) A. DIAGONALS (BIKE & EQUESTRIAN) B. LONGITUDINAL BARS (SCHOOL)	2 @ 6 (150) 12 (300) @ 45° 12 (300) @ 90°	SOLID SOLID SOLID	WHITE WHITE WHITE	NOT LESS THAN 6' (1.8 m) APART 2' (600) APART SEE TYPICAL CROSSWALK MARKING DETAILS.
STOP LINES	24 (600)	SOLID	WHITE	PLACE 4' (1.2 m) IN ADVANCE OF AND PARALLEL TO CROSSWALK, IF PRESENT, OTHERWISE, PLACE AT DESIRED STOPPING POINT, PARALLEL TO CROSSROAD CENTERLINE, WHERE POSSIBLE
PAINTED MEDIANS	2 @ 4 (100) WITH 12 (300) DIAGONALS @ 45° NO DIAGONALS USED FOR 4' (1.2 m) WIDE MEDIANS	SOLID	YELLOW; TWO WAY TRAFFIC WHITE; ONE WAY TRAFFIC	11 (280) C-C FOR THE DOUBLE LINE SEE TYPICAL PAINTED MEDIAN MARKING.
GORE MARKING AND CHANNELIZING LINES	8 (200) WITH 12 (300) DIAGONALS @ 45°	SOLID	WHITE	DIAGONALS: 15' (4.5 m) C-C (LESS THAN 30MPH (50 km/h)) 20' (6 m) C-C 30MPH (50 km/h) TO 45MPH (70 km/h) 30' (9 m) C-C (OVER 45MPH (70 km/h))
RAILROAD CROSSING	24 (600) TRANSVERSE LINES; "RR" 15' (4.5 m) LETTERS; 16 (400) LINE FOR "X"	SOLID	WHITE	SEE STATE STANDARD 780001 AREA OF: "R"=3.6 SQ. FT. (0.33 m ²) EACH "X"=54.0 SQ. FT. (5.0 m ²)
SHOULDER DIAGONALS	12 (300) @ 45°	SOLID	WHITE - RIGHT YELLOW - LEFT	50' (15 m) C-C (LESS THAN 30MPH (50 km/h)) 75' (25 m) C-C (30 MPH (50 km/h) TO 45MPH (70 km/h)) 150' (45 m) C-C (OVER 45MPH (70 km/h))

FOR FURTHER DETAILS ON PAVEMENT MARKING REFER TO STANDARD SPECIFICATIONS FOR ROAD AND BRIDGE CONSTRUCTION AND STATE STANDARD 780001.

All dimensions are in inches (millimeters) unless otherwise shown.

REVISIONS	
NAME	DATE
EVERS	03-19-90
T. RAMMACHER	10-27-94
C. JUCLIS	09-09-09

ILLINOIS DEPARTMENT OF TRANSPORTATION

DISTRICT ONE
 TYPICAL PAVEMENT
 MARKINGS

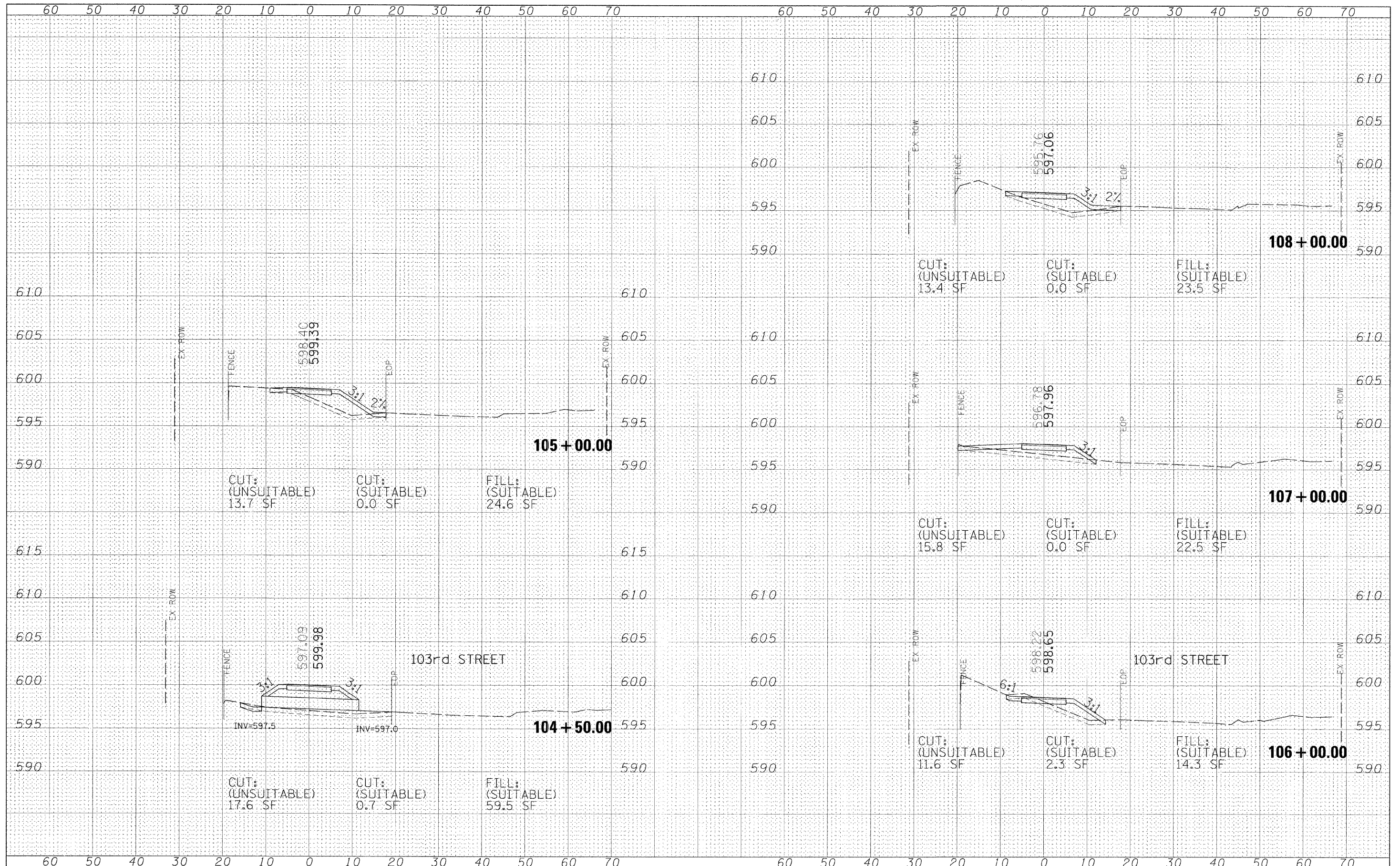
SCALE: NONE

DRAWN BY CADD
 CHECKED BY

TC-13

FINAL SURVEY	SURVEYED	DATE
NOTE BOOK	PLOTTED	BY
NO.	TEMPLATE	
	AREAS CHECKED	
	AREAS CHECKED	

ORIGINAL SURVEY	SURVEYED	DATE
NOTE BOOK	PLOTTED	BY
NO.	TEMPLATE	
	AREAS CHECKED	
	AREAS CHECKED	

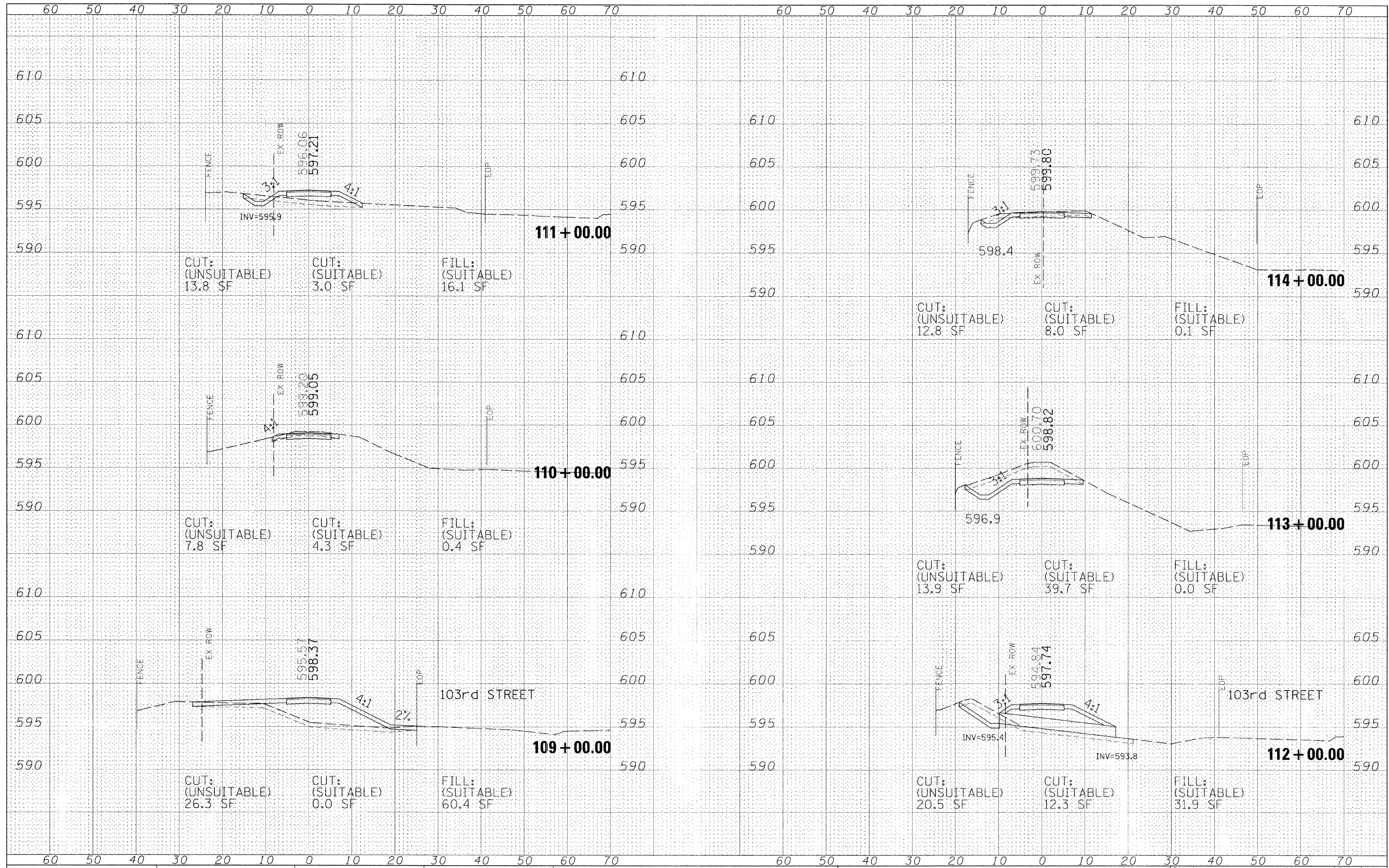


FILE NAME =	USER NAME = #USER#	DESIGNED - MIA	REVISED -	STATE OF ILLINOIS DEPARTMENT OF TRANSPORTATION	STONY CREEK BIKE TRAIL X-SECTIONS 103rd STREET			F.A.I. RTE.	SECTION	COUNTY	TOTAL SHEETS	SHEET NO.
#FILE#		DRAWN - MIA	REVISED -		SCALE:	SHEET NO. 2 OF 6 SHEETS	STA. 104+50.28 TO STA. 108+00.00	09-00173-00-BT	COOK	20	14	
		CHECKED - DDL	REVISED -									
		DATE - 12/01/09	REVISED -									

CONTRACT NO. 63387
ILLINOIS FED. AID PROJECT

FINAL SURVEY	SURVEYED	DATE
NOTE BOOK	PLOTTED	
AREAS CHECKED	TEMPLATE	
NO.	AREAS CHECKED	

ORIGINAL SURVEY	SURVEYED	DATE
NOTE BOOK	PLOTTED	
AREAS CHECKED	TEMPLATE	
NO.	AREAS CHECKED	

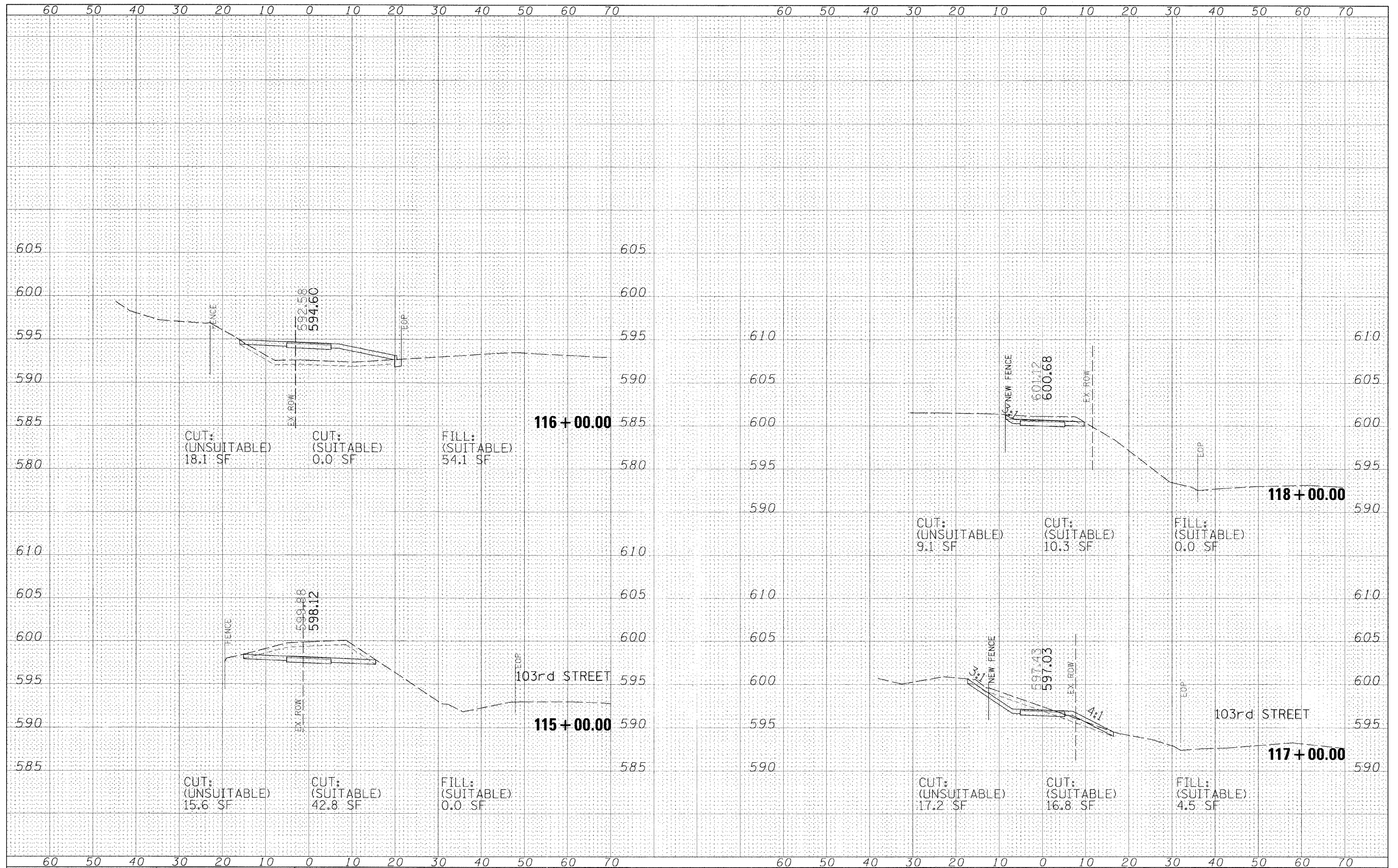


FILE NAME =	USER NAME = #USER#	DESIGNED - MIA	REVISED -	STATE OF ILLINOIS DEPARTMENT OF TRANSPORTATION	STONY CREEK BIKE TRAIL X-SECTIONS 103rd STREET	F.A. RTE.	SECTION	COUNTY	TOTAL SHEETS	SHEET NO.
#FILE.#		DRAWN - MIA	REVISED -			09-00173-00-BT	COOK	20	15	
PLOT SCALE = #SCALE#		CHECKED - DDL	REVISED -			CONTRACT NO. 63387				
PLOT DATE = #DATE#		DATE - 12/01/09	REVISED -			ILLINOIS FED. AID PROJECT				

SCALE: SHEET NO. 3 OF 6 SHEETS STA. 109+00.00 TO STA. 114+00.00

FINAL SURVEY	SURVEYED	BY	DATE
NOTE BOOK	PLOTTED		
NO.	TEMPLATE		
	AREAS CHECKED		

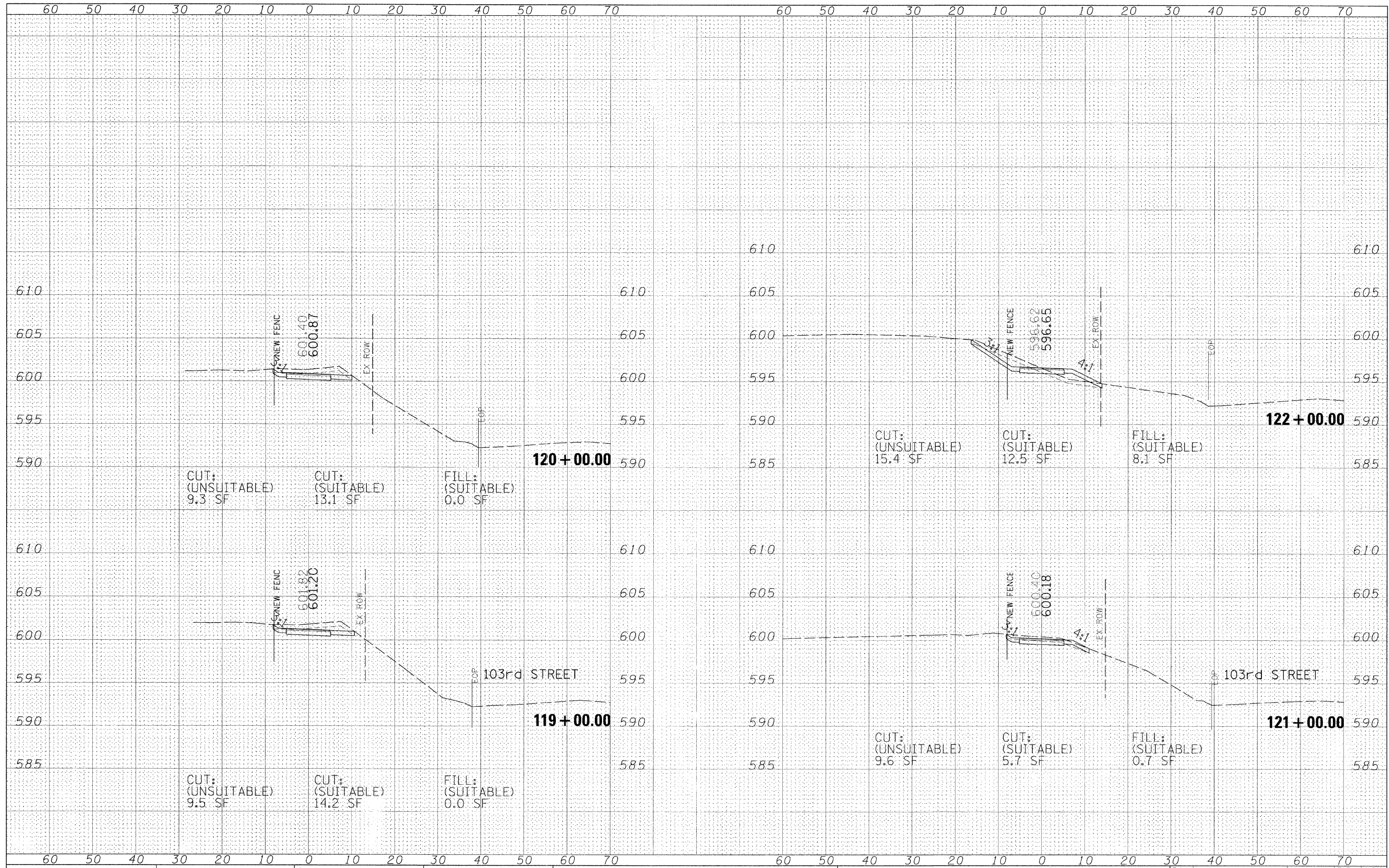
ORIGINAL SURVEY	SURVEYED	BY	DATE
NOTE BOOK	PLOTTED		
NO.	TEMPLATE		
	AREAS CHECKED		



FILE NAME =	USER NAME = #USER#	DESIGNED - MIA	REVISED -	STATE OF ILLINOIS DEPARTMENT OF TRANSPORTATION	STONY CREEK BIKE TRAIL X-SECTIONS 103rd STREET				F.A.I. RTE.	SECTION	COUNTY	TOTAL SHEETS	SHEET NO.
#FILE#		DRAWN - MIA	REVISED -		SCALE: SHEET NO. 4 OF 6 SHEETS STA. 115+00.00 TO STA. 118+00.00				09-00173-00-BT	COOK	20	16	
	PLOT SCALE = #SCALE#	CHECKED - DDL	REVISED -						CONTRACT NO. 63387				
	PLOT DATE = #DATE#	DATE - 12/01/09	REVISED -						ILLINOIS FED. AID PROJECT				

FINAL SURVEY	SURVEYED	DATE
NOTE BOOK	PLOTTED	BY
NO.	TEMPLATE	
	AREAS	
	CHECKED	

ORIGINAL SURVEY	SURVEYED	DATE
NOTE BOOK	PLOTTED	BY
NO.	TEMPLATE	
	AREAS	
	CHECKED	

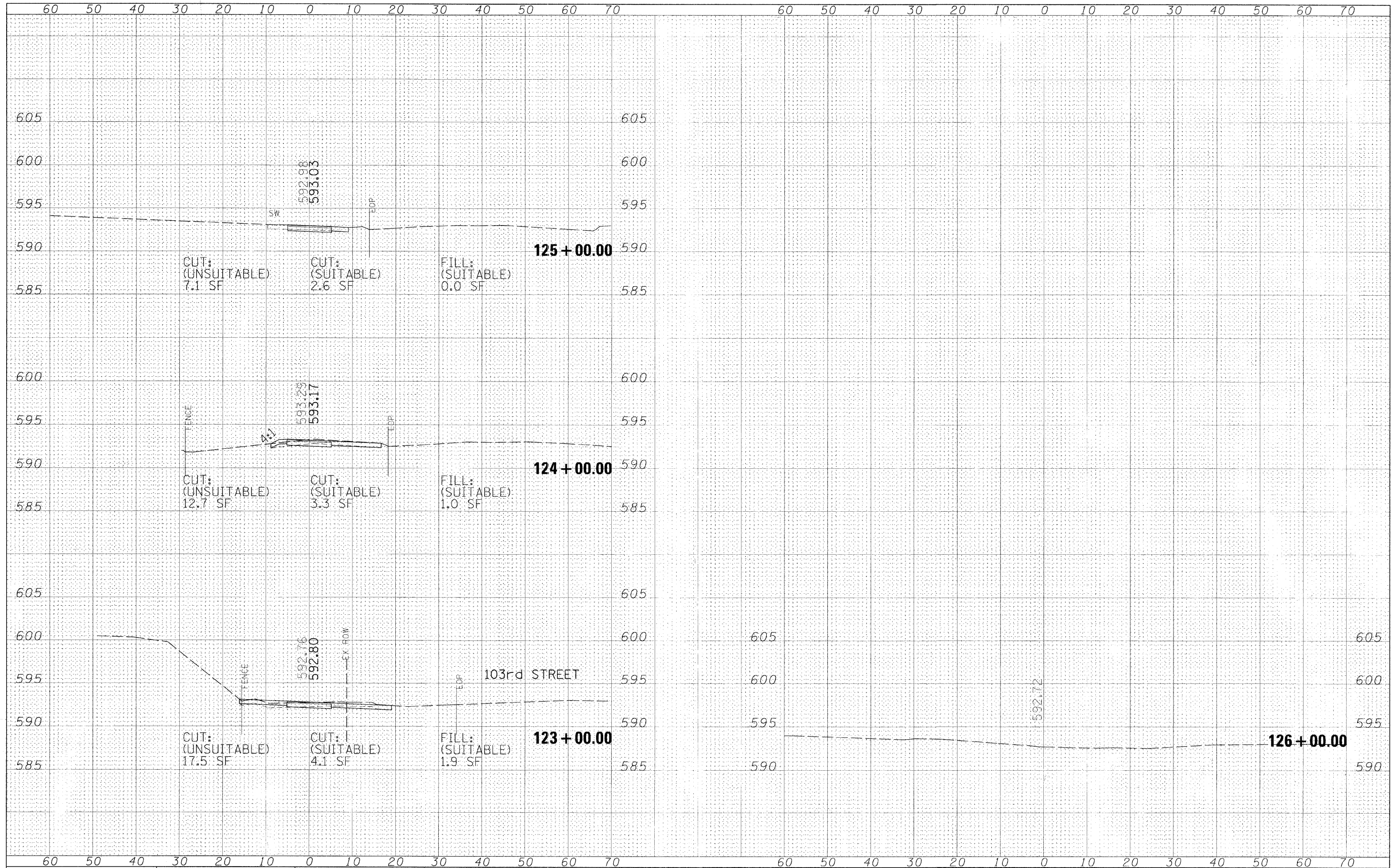


FILE NAME =	USER NAME = *USER*	DESIGNED - MIA	REVISED -	STATE OF ILLINOIS DEPARTMENT OF TRANSPORTATION	STONY CREEK BIKE TRAIL X-SECTIONS 103rd STREET		F.A. RT.	SECTION	COUNTY	TOTAL SHEETS	SHEET NO.
#FILEL*		DRAWN - MIA	REVISED -		SCALE:	SHEET NO. 5 OF 6 SHEETS	STA. 119+00.00 TO STA. 122+00.00	09-00173-00-BT	COOK	20	17
		CHECKED - DDL	REVISED -								
		DATE - 12/01/09	REVISED -								

ILLINOIS FED. AID PROJECT

FINAL SURVEY	SURVEYED	DATE
NOTE BOOK	PLOTTED	
NO.	TEMP. DATE	
	AREAS CHECKED	
	AREAS CHECKED	

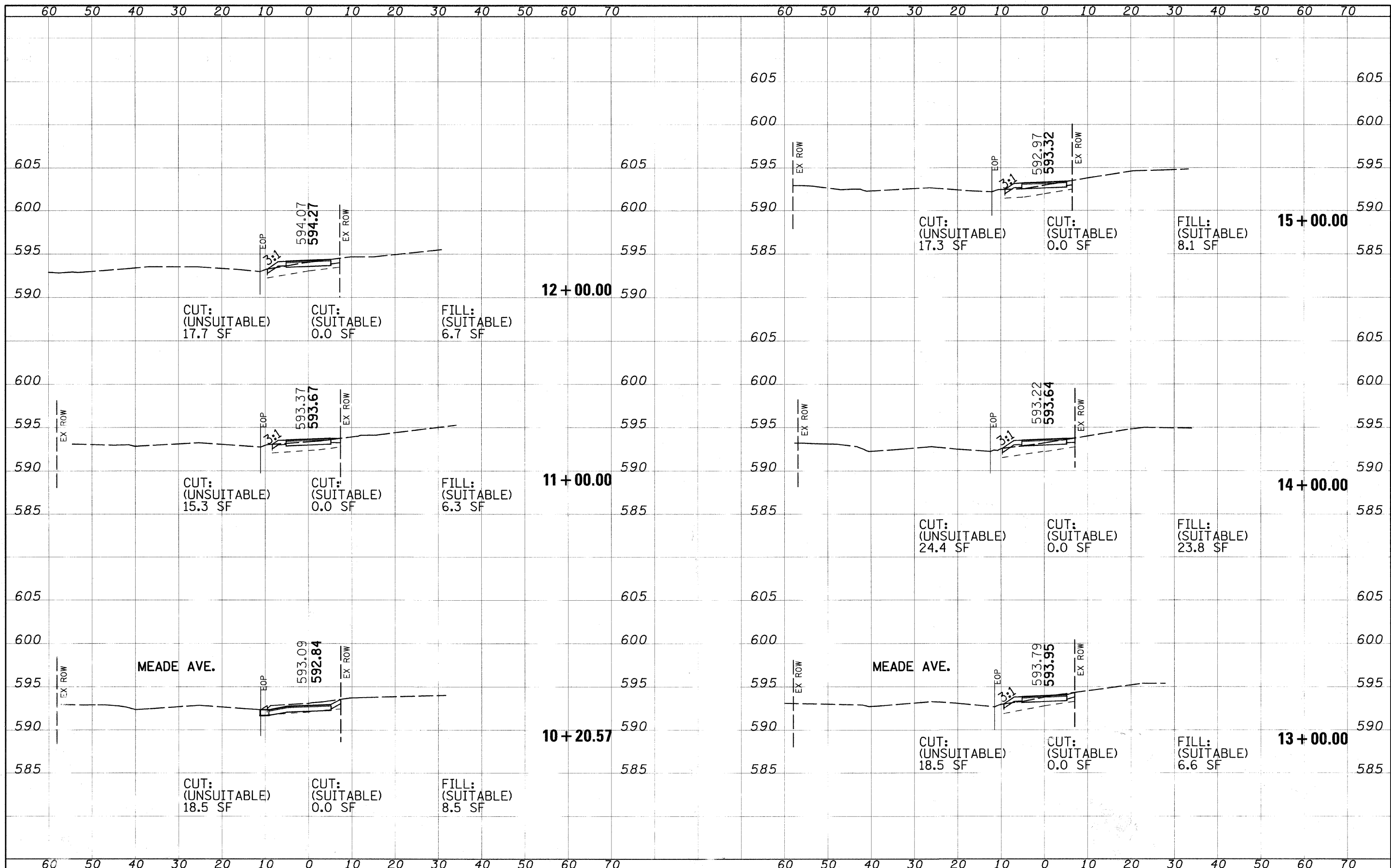
ORIGINAL SURVEY	SURVEYED	DATE
NOTE BOOK	PLOTTED	
NO.	TEMP. DATE	
	AREAS CHECKED	
	AREAS CHECKED	



FILE NAME =	USER NAME = #USER#	DESIGNED - MIA	REVISED -	STATE OF ILLINOIS DEPARTMENT OF TRANSPORTATION	STONY CREEK BIKE TRAIL X-SECTIONS 103rd STREET		F.A. RTE.	SECTION	COUNTY	TOTAL SHEETS	SHEET NO.
#FILE#		DRAWN - MIA	REVISED -		SCALE:	SHEET NO. 6 OF 6 SHEETS	STA. 123+00.00 TO STA. 126+00.00	09-00173-00-BT	COOK	20	18
		CHECKED - DDL	REVISED -		CONTRACT NO. 63387						
		DATE - 12/01/09	REVISED -		ILLINOIS FED. AID PROJECT						

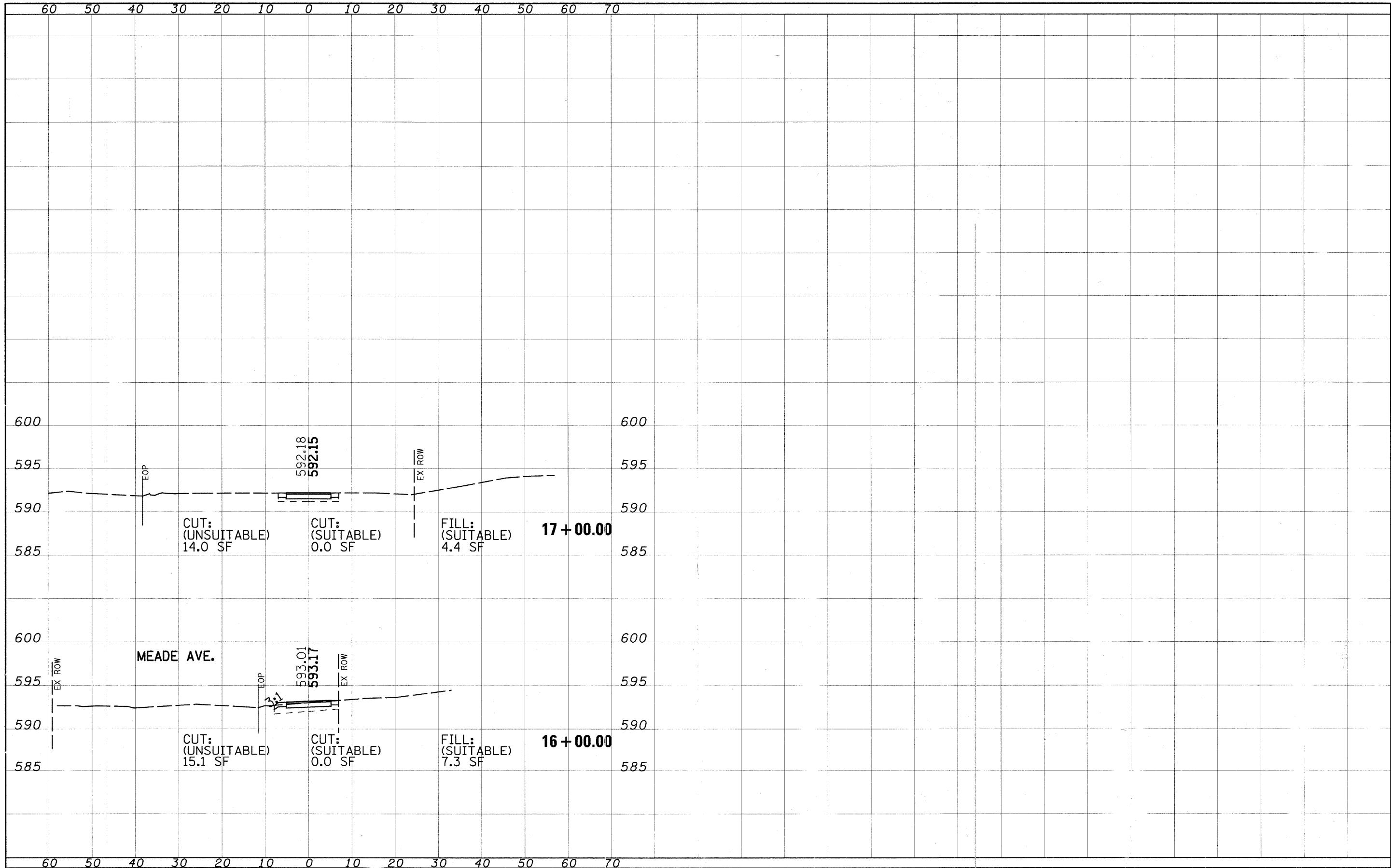
DATE	
BY	
SUPERVISED	
PLOTTED	
NOTE BOOK	
TEMPLATE	
AREAS CHECKED	
NO.	

DATE	
BY	
SUPERVISED	
PLOTTED	
NOTE BOOK	
TEMPLATE	
AREAS CHECKED	
NO.	



FINAL SURVEY	SUBMITTED	DATE
NOTE BOOK	PLOTTED	BY
NO.	TEMPLATE	
	AREAS CHECKED	

ORIGINAL SURVEY	SUBMITTED	DATE
NOTE BOOK	PLOTTED	BY
NO.	TEMPLATE	
	AREAS CHECKED	



FILE NAME	USER NAME =	DESIGNED	MIA	REVISED	STATE OF ILLINOIS DEPARTMENT OF TRANSPORTATION		STONY CREEK BIKE TRAIL X-SECTIONS MEADE AVE.		F.A. RTE.	SECTION	COUNTY	TOTAL SHEETS	SHEET NO.
#FILE#		DRAWN	MIA	REVISED					09-00173-00-BT	COOK	20	20	20
	PLOT SCALE = 10:12 IN.	CHECKED	DDL	REVISED			SCALE: SHEET NO. 2 OF 2 SHEETS STA. 16+00.00 TO STA. 17+00.00					CONTRACT NO. 63387	
	PLOT DATE = 12/01/09	DATE	12/01/09	REVISED					ILLINOIS FED. AID PROJECT				