

F.A.U. RTE.	SECTION	COUNTY	TOTAL SHEETS	SHEET NO.
0321	09-00043-00-SW	WILL	7	1
FED. ROAD DIST. NO.	ILLINOIS	CONTRACT NO. 63392		

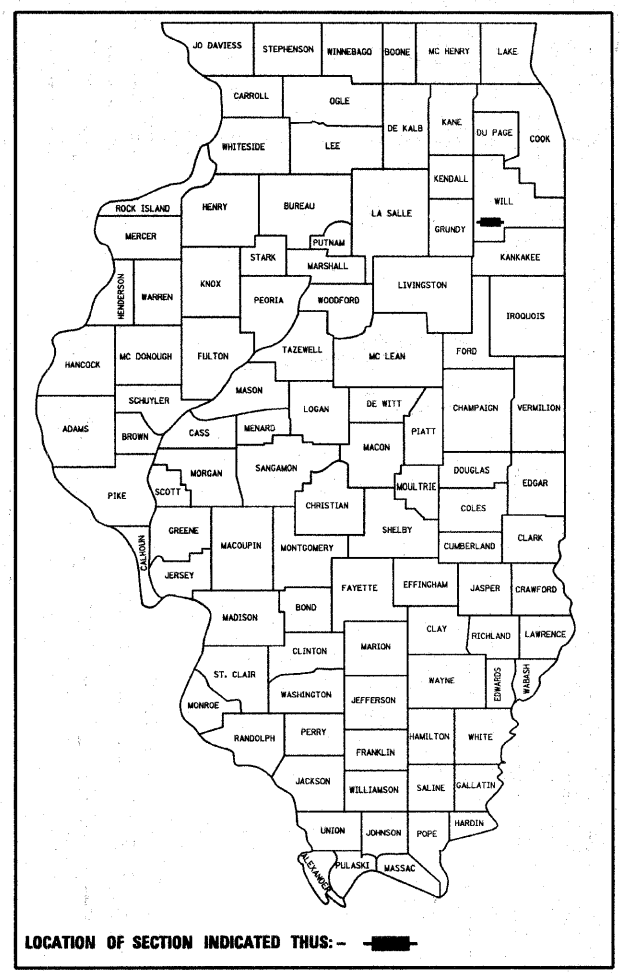
STATE OF ILLINOIS
DEPARTMENT OF TRANSPORTATION
DIVISION OF HIGHWAYS

PLANS FOR PROPOSED
FEDERAL AID HIGHWAY

FAU ROUTE 0321 (KANKAKEE STREET)
BALTIMORE ST. TO KANKAKEE RIVER DR.
SECTION 09-00043-00-SW
PROJECT # ARA-9003 (513)
JOB # C-91-135-10

SIDEWALK AND APPURTENANCES

CITY OF WILMINGTON
WILL COUNTY



INDEX OF SHEETS

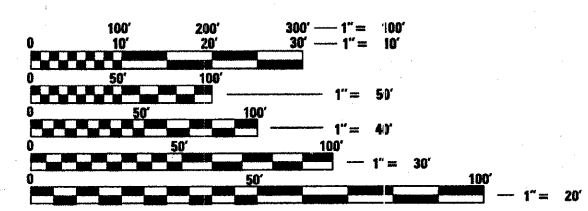
- 1 COVER SHEET
- 2 GENERAL NOTES
- 3 SUMMARY, SCHEDULE OF QUANTITIES & TYPICAL SECTIONS
- 4 - 7 PLAN SHEETS

STATE STANDARDS

- 000001-05 STANDARD SYMBOLS, ABBREVIATIONS AND PATTERNS
- 424001-05 CURB RAMPS FOR SIDEWALK
- 701301-03 LANE CLOSURE 2L 2W - SHORT TIME OPERATIONS
- 701501-05 URBAN LANE CLOSURE 2L 2W - UNDIVIDED
- 701801-04 LANE CLOSURE MULTILANE 1W OR 2W CROSSWALK OR SIDEWALK CLOSURE
- 701901-01 TRAFFIC CONTROL DEVICES

DESIGN DESIGNATION

KANKAKEE STREET
ADT=5000 (2008)
COLLECTOR
POSTED SPEED=25 MPH
DESIGN SPEED=30 MPH

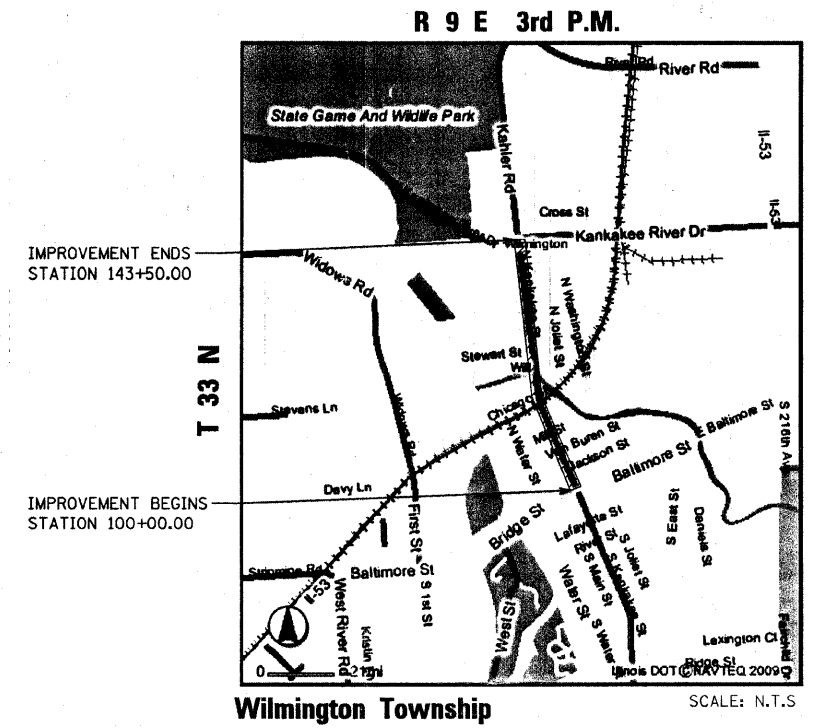


FULL SIZE PLANS HAVE BEEN PREPARED USING STANDARD ENGINEERING SCALES. REDUCED SIZED PLANS WILL NOT CONFORM TO STANDARD SCALES. IN MAKING MEASUREMENTS ON REDUCED PLANS, THE ABOVE SCALES MAY BE USED.

J.U.L.I.E.
JOINT UTILITY LOCATION INFORMATION FOR EXCAVATION
1-800-892-0123
OR 811

PROJECT MANAGER: COLBY C. ZEMAITIS, PE

CONTRACT NO. 63392



Wilmington Township

SCALE: N.T.S.

GROSS LENGTH = 4,225 FT. = 0.8 MILE
NET LENGTH = 4,225 FT. = 0.8 MILE

ROBERT E. HAMILTON
CONSULTING ENGINEERS P.C.
 3230 EXECUTIVE DRIVE
 JOLIET, ILLINOIS
 PH: 815.730.3444
 www.REHamilton.org
 ILL. LICENSE NO. 184-003208 REH JOB NO.: 09719

Expires 11/30/11

 COLBY C. ZEMAITIS
 ENGINEERS SEAL

STATE OF ILLINOIS
DEPARTMENT OF TRANSPORTATION
DIVISION OF HIGHWAYS

Approved: *[Signature]* 12-1-2009
 CITY OF WILMINGTON MAYOR

Passed: DECEMBER 5, 2009
[Signature]
 DISTRICT 1 ENGINEER OF LOCAL ROADS & STREETS

Releasing for Bid Based on Limited Review: DECEMBER 8, 2009
[Signature]
 DIRECTOR OF HIGHWAYS, REGION 1 ENGINEER

PRINTED BY THE AUTHORITY
OF THE STATE OF ILLINOIS

FIELD ENGINEER: MELCHOR MANGOBA (847) 705-4408

GENERAL NOTES

1. THE ILLINOIS DEPARTMENT OF TRANSPORTATION "STANDARD SPECIFICATIONS FOR ROAD AND BRIDGE CONSTRUCTION", LATEST EDITION, AND ALL ADDENDA THERE TO, SHALL GOVERN ALL WORK UNDER THIS CONTRACT, EXCEPT AS MODIFIED BY THE SPECIFICATIONS.
 2. FOR STABILIZATION, ALL TYPE III BARRICADES SHALL REQUIRE A MINIMUM OF FOUR SAND BAGS PER BARRICADE.
 3. ALL ELEVATIONS REFERRING TO NAVD 88 DATUM.
 4. EXISTING UTILITIES KNOWN TO BE WITHIN THE LIMITS OF THE IMPROVEMENT ARE TO BE LOCATED BY JULIE.
THE CONTRACTOR SHALL CONTACT JULIE AT LEAST 48 HOURS PRIOR TO EXCAVATION.
 5. THE CONTRACTOR SHALL NOTIFY THE ENGINEER AT LEAST 72 HOURS IN ADVANCE OF BEGINNING WORK AND SHALL COORDINATE ALL CONSTRUCTION OPERATIONS WITH THE ENGINEER. SPECIAL ATTENTION IS CALLED TO ARTICLE 105.7 OF THE STANDARD SPECIFICATIONS AND THE SPECIAL PROVISIONS FOR TRAFFIC CONTROL AND PROTECTION. THE STORAGE OF EQUIPMENT AND/OR MATERIALS WITHIN THE PARKWAYS SHALL REQUIRE PRIOR APPROVAL OF THE ENGINEER. UNDER NO CONDITION SHALL THE CONTRACTOR OPERATE ANY VALVES OR HYDRANTS WITHIN THE PROJECT AREA.
6. THE CONTRACTOR SHALL BE RESPONSIBLE FOR ANY DAMAGE OR DESTRUCTION OF PUBLIC OR PRIVATE PROPERTY, AND SHALL RESTORE SUCH PROPERTY AT HIS OWN EXPENSE. COORDINATION OF ALL UTILITY AND ROADWAY WORK INVOLVED IN THE CONSTRUCTION AREA, WILL BE DISCUSSED AT A PRECONSTRUCTION CONFERENCE. THE CONTRACTOR SHALL USE ALL NECESSARY PRECAUTIONS AND PROTECTIVE MEASURES REQUIRED TO MAINTAIN EXISTING UTILITIES, SEWERS, AND APPURTENANCES THAT MUST BE KEPT IN OPERATION.
7. WHENEVER THE CONTRACTOR ENCOUNTERS FACILITIES AND APPURTENANCES WITHIN THE LIMITS OF THE IMPROVEMENTS, HE WILL BE REQUIRED TO HAND TRENCH IN THAT AREA IN ORDER NOT TO DAMAGE THE FACILITIES.
8. THE CONTRACTOR WILL BE REQUIRED TO DISPOSE OF ALL PAVEMENT, AND ALL OTHER MATERIAL EXCAVATED OR REMOVED DUE TO CONSTRUCTION OPERATIONS, AT HIS EXPENSE. ALL EXCESS EXCAVATED MATERIAL SHALL BE REMOVED FROM THE SITE ON THE DATE IT IS EXCAVATED, UNLESS APPROVED BY THE ENGINEER NO PAYMENT WILL BE MADE FOR HAULING OR TRUCKING MATERIAL TO LOCATIONS, OUTSIDE THE LIMITS OF THE IMPROVEMENT.
9. WHENEVER DURING CONSTRUCTION OPERATIONS, ANY LOOSE MATERIAL IS DEPOSITED IN THE FLOW LINE OF GUTTERS, DRAINAGE STRUCTURES, DITCHES, ETC. SUCH THAT THE NATURAL FLOW LINE OF WATER IS OBSTRUCTED, THIS LOOSE MATERIAL SHALL BE REMOVED AT THE CLOSE OF EACH WORKING DAY BY THE RESPONSIBLE PARTY. AT THE CONCLUSION OF CONSTRUCTION OPERATIONS, ALL DRAINAGE STRUCTURES AND FLOW LINES SHALL BE FREE FROM DIRT AND DEBRIS. THIS WORK SHALL BE INCLUDED IN THE COST OF THE CONTRACT.
10. THE CONTRACTOR SHALL BE RESPONSIBLE FOR THE INSTALLATION AND MAINTENANCE OF ADEQUATE SIGNS, TRAFFIC CONTROL DEVICES, AND WARNING DEVICES TO INFORM AND PROTECT THE PUBLIC DURING ALL PHASES OF CONSTRUCTION. BARRICADES AND WARNING SIGNS SHALL BE PROVIDED IN ACCORDANCE WITH ARTICLE 107.14 OF THE IDOT STANDARD SPECIFICATIONS. ADEQUATE LIGHTING SHALL BE MAINTAINED FROM DUSK TO DAWN AT ALL LOCATIONS WHERE CONSTRUCTION OPERATIONS WARRANT, OR AS DESIGNATED BY THE ENGINEER OR MUNICIPALITY. ALL TRAFFIC CONTROL WORK SHALL BE DONE IN ACCORDANCE WITH THE IDOT "MANUAL ON UNIFORM TRAFFIC CONTROL DEVICES."

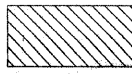
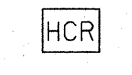
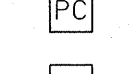
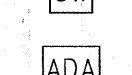

11. ALL EXISTING TRAFFIC SIGNS, STREET SIGNS, ETC., WHICH INTERFERE WITH CONSTRUCTION OPERATIONS AND NOT NOTED FOR REMOVAL OR DISPOSAL SHALL BE REMOVED AND RESET BY THE CONTRACTOR AT LOCATIONS AS DESIGNATED BY THE ENGINEER. THIS SHALL BE INCLUDED IN THE COST OF THE CONTRACT AND NO ADDITIONAL COMPENSATION SHALL BE ALLOWED. DAMAGE TO THESE ITEMS SHALL BE REPLACED BY THE CONTRACTOR AT HIS OWN EXPENSE. ALL SIGNS NOT REQUIRED TO BE RESET SHALL BE DELIVERED TO THE CITY AS APPROPRIATE.

12. THE CITY OF WILMINGTON, IDOT OR WCHD MAY OWN AND OPERATE TRAFFIC SIGNALS AND CABLE IN THE VICINITY OF THE WORK. THE CONTRACTOR SHALL CONTACT THE SAME FOR TRAFFIC SIGNAL CABLE LOCATION A MINIMUM OF 48 HOURS (EXCLUSIVE OF SATURDAYS, SUNDAYS AND HOLIDAYS) PRIOR TO EXCAVATION AT ANY LOCATION WITHIN THE PUBLIC RIGHT-OF-WAY OF THE SURROUNDING STREETS.
13. ALL EXISTING TOPOGRAPHY, UNDERGROUND UTILITIES, STRUCTURES AND ASSOCIATED FACILITIES SHOWN ON THESE DRAWINGS HAVE BEEN PLOTTED FROM AVAILABLE SURVEYS AND RECORDS. THEREFORE, THEIR LOCATIONS AND ELEVATIONS MUST BE CONSIDERED APPROXIMATE ONLY. THERE MAY BE OTHER FACILITIES, THE EXISTENCE OF WHICH ARE NOT PRESENTLY KNOWN. CONTRACTOR IS TO VERIFY ALL EXISTING STRUCTURES AND FACILITIES AND NOTIFY ENGINEER OF ANY DISCREPANCIES PRIOR TO STARTING HIS WORK.
14. THE CONTRACTOR SHALL PROVIDE FOR THE SAFE AND ORDERLY PASSAGE OF TRAFFIC AND PEDESTRIANS WHERE HIS OPERATIONS ABUT PUBLIC THOROUGHFARES AND ADJACENT PROPERTY.
15. CONSTRUCTION OPERATIONS SHALL BE CONDUCTED IN SUCH A WAY AS TO PREVENT TRACKING OF MUD OR SOIL ONTO PUBLIC THOROUGHFARES, AT THE END OF EACH DAY THE CONTRACTOR SHALL CLEAN UP ALL MUD OR SOIL WHICH HAS BEEN TRACKED ONTO PUBLIC STREETS.
16. BEFORE EXCAVATING OVER OR ADJACENT TO ANY EXISTING UTILITIES, NOTIFY THE OWNER OF SUCH UTILITIES TO ENSURE THAT PROTECTIVE WORK WILL BE COORDINATED AND PERFORMED BY THE CONTRACTOR IN ACCORDANCE WITH THE REQUIREMENTS OF THE OWNER OF THE UTILITY INVOLVED. IF ANY EXISTING SERVICE LINES, UTILITIES AND UTILITY STRUCTURES WHICH ARE TO REMAIN IN SERVICE ARE UNCOVERED OR ENCOUNTERED DURING THIS OPERATION, THEY SHALL BE SAFEGUARDED, PROTECTED FROM DAMAGE AND SUPPORTED IF NECESSARY.

17. THE JOINTS ADJACENT TO THE SIDEWALK TO BE REMOVED SHALL BE SAW CUT SEPARATING THE REMOVAL PORTION FROM THE SIDEWALK TO REMAIN. THE WORK SHALL BE INCLUDED IN THE COST OF THE CONTRACT.

18. ANY SIDEWALK IMPROVEMENTS MADE ADJACENT TO EXISTING DRIVEWAYS, SHALL INCLUDE ONLY THOSE SECTIONS SHOWN ON THE PLANS AND MARKED / LAYED OUT BY THE ENGINEER. SHOULD THERE BE ANY DRIVEWAY REPAIRS NECESSARY, THESE AREAS SHALL BE INCLUDED IN THE COST OF THE SIDEWALK PAY ITEMS.

LEGEND

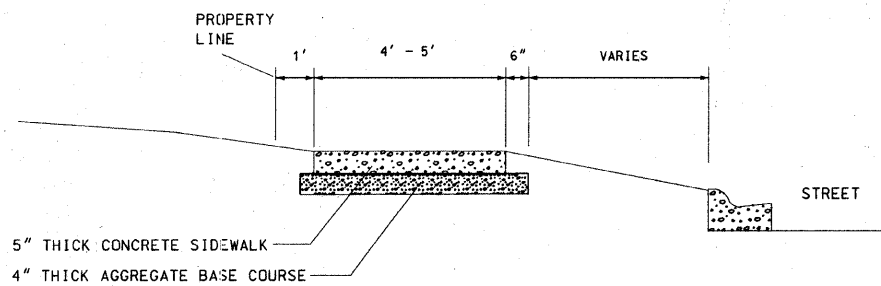
- ADJUSTMENT ITEMS**
-  SIDEWALK REMOVAL, SPECIAL
 -  HANDICAPPED RAMP (ADA) W/ DETETABLE WARNINGS
 -  POLYMER CONCRETE
 -  PORTLAND CEMENT CONCRETE SIDEWALK, 5 INCH, SPECIAL
 -  EXISTING ADA COMPLIANT RAMP

FILE NAME =	USER NAME = #USER#	DESIGNED - CCZ	REVISED - 10-12-2009 DWS	STATE OF ILLINOIS DEPARTMENT OF TRANSPORTATION	General Notes			F.A.U. RTE.	SECTION	COUNTY	TOTAL SHEETS	SHEET NO.
#FILE#		DRAWN - DWS	REVISED - 10-19-09 CCZ		SCALE: NONE			0321	09-00043-00-SW	WILL	7	2
	PLOT SCALE = #SCALE#	CHECKED - JAR	REVISED - 11-12-09 CCZ		SHEET NO. 2 OF 7 SHEETS			PROJECT ARA - 9003(513)			CONTRACT NO. 63392	
	PLOT DATE = #DATE#	DATE - 09-23-2009	REVISED -		STA. TO STA.			FED. ROAD DIST. NO. ILLINOIS FED. AID PROJECT				

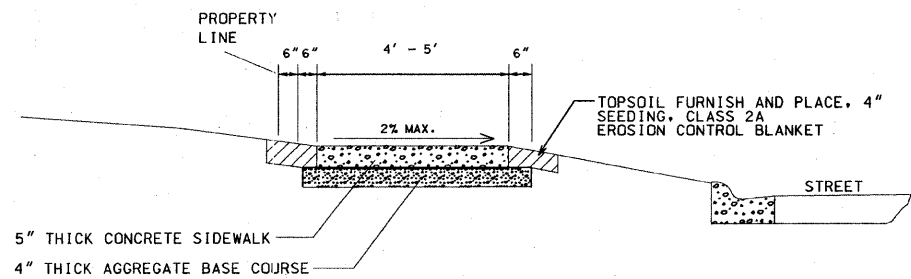
SCHEDULE OF QUANTITIES

SUMMARY OF QUANTITIES CONSTRUCTION TYPE CODE: SFTY-1B				
ITEM NO.	DESCRIPTION	UNIT	QUANTITY	
* 21101615	TOPSOIL FURNISH AND PLACE, 4"	SQ YD	1,501	
* 25000210	SEEDING, CLASS 2A	ACRE	0.31	
25000400	NITROGEN FERTILIZER NUTRIENT	POUND	28	
25000500	PHOSPHORUS FERTILIZER NUTRIENT	POUND	28	
25000600	POTASSIUM FERTILIZER NUTRIENT	POUND	28	
* 25100630	EROSION CONTROL BLANKET	SQ YD	1,501	
* 42400430	PORTLAND CEMENT CONCRETE SIDEWALK 5 INCH, SPECIAL	SQ FT	6,696	
42400800	DETECTABLE WARNINGS	SQ FT	90	
44002400	CURB REMOVAL (SPECIAL)	FOOT	168	
* 44004700	SIDEWALK REMOVAL, SPECIAL	SQ FT	6,811	
67100100	MOBILIZATION	L SUM	1	
* 70102620	TRAFFIC CONTROL AND PROTECTION, STANDARD 701501	L SUM	1	
70102640	TRAFFIC CONTROL AND PROTECTION, STANDARD 701801	L SUM	1	
* X0320887	POLYMER CONCRETE	CU FT	2	
* [Symbol]	INDICATES SPECIAL PROVISION			
▲ [Symbol]	INDICATES SPECIALTY ITEM			

EXISTING TYPICAL SECTION



PROPOSED TYPICAL SECTION



NOTES:

- AGGREGATE BASE COURSE SHALL BE CA-6.
- PREMOULDED EXPANSION JOINTS SHALL BE PROVIDED:
 - AT PROPERTY LINES
 - AT SIDEWALK INTERSECTIONS;
 - AGAINST DRIVEWAYS, CURB AND GUTTER, AND BUILDINGS, ETC.
 - EVERY 50'
- TOOLED CONTRACTION JOINTS SHALL BE PROVIDED AT 5' INTERVALS.
- TWO #4 REBAR 15' LONG SHALL BE PROVIDED AT ALL UTILITY TRENCHES.
- FORMBOARD REQUIREMENTS: MINIMUM 2" X 6".
- AT DRIVEWAYS THICKNESS SHALL BE 6" AND WELDED WIRE FABRIC 6" X 6" NO. 6 SHALL BE USED AND CONSIDERED INCIDENTAL TO THE CONTRACT.

NOTE

THE CITY OF WILMINGTON HAS IDENTIFIED THE AREAS FOR SIDEWALK REPLACEMENT IN THESE PLANS AND SCHEDULE OF QUANTITIES. THE STIMULUS GRANT BUDGET ONLY ALLOWS FOR A CERTAIN AMOUNT OF REPAIRS / REPLACEMENT; THEREFORE THE QUANTITY OF SIDEWALK REPAIRS MAY INCREASE / DECREASE BASED ON THE BID UNIT PRICE. IF ADDITIONAL FUNDS REMAIN AFTER THE SCHEDULE OF QUANTITIES ARE COMPLETED, THE CITY OF WILMINGTON WILL FIND ADDITIONAL AREAS FOR REPLACEMENT WITHIN THE PROJECT LIMITS AND IN ACCORDANCE WITH ARTICLE 104.2, "ALTERATIONS, CONCESSIONS, EXTENSIONS, DEDUCTIONS, AND EXTRA WORK", STANDARD SPECIFICATIONS FOR ROAD AND BRIDGE CONSTRUCTION, ILLINOIS DEPARTMENT OF TRANSPORTATION.

NO.	LOCATION	STATION	LENGTH		WIDTH		AREA	
			FT	FT	FT	FT	SF	SF
1	BALTIMORE STREET TO JACKSON STREET	A 101+71 - 130+21 LT	150	5	5	750		
		B 101+71 - 102+01 RT	30	5	5	150		
		C 103+22 LT	20	5	5	100		
		D 103+22 RT	36	5	5	180		
2	JACKSON STREET TO VAN BUREN STREET	A 103+60-103+95 RT	45	5	5	225		
		B 104+41 - 105+21 LT	80	5	5	400		
		C 106+25 - 106+41 LT	16	5	5	80		
3	VAN BUREN STREET TO MILL STREET	A 106+81 - 107+26 LT	45	5	5	225		
		B 108+33 - 109+08 RT	75	5	5	375		
4	MILL STREET TO CANAL STREET	A 109+96 - 110+61 RT	75	5	5	375		
		B 111+01 - 111+31 LT	30	5	5	150		
		C 111+54-111+64 LT	10	5	5	50		
		D 111+49 - 112+04 RT	55	5	5	275		
		E 112+85 LT	5	5	5	25		
		F 112+85 RT	10	5	5	50		
5	CANAL STREET TO CHICAGO STREET	A 113+20 LT	15	7	7	105		
6	CHICAGO STREET TO STEWART STREET	A 121+71 - 122+06 RT	35	5	5	175		
		B 121+60 - 123+19 LT	160	5	5	800		
7	STEWART STREET TO NORTH STREET	A 124+24-125+50 LT	126	5	5	630		
8	NORTH STREET TO S. OUTER DRIVE	A 129+66 - 131+90 RT	25	5	5	125		
		B 130+63 - 130+88 RT	25	4	4	100		
		C 131+10 - 131+90 RT	80	4	4	320		
9	S. OUTER DRIVE TO N. OUTER DRIVE	A 132+35 RT	5	4	4	20		
		B 134+10 - 134+30 RT	20	4	4	80		
10	KANKAKEE RIVER DRIVE TO ROLAND AVENUE	A 143+20 - 143+35 RT	25	4	4	100		
TOTAL 6,696								

NO.	LOCATION	STATION	LENGTH		WIDTH		AREA	
			FT	FT	FT	FT	SF	SF
1	BALTIMORE STREET - NORTHWEST CORNER	100+40 LT	2	1.5	1.5	3		
2	BALTIMORE STREET - NORTHEAST CORNER	100+40 RT	2	1.5	1.5	3		
3	JACKSON STREET - SOUTHWEST CORNER	103+22 LT	2	1.5	1.5	3		
4	JACKSON STREET - SOUTHEAST CORNER (2)	103+22 RT	4	1.5	1.5	6		
5	JACKSON STREET - NORTHWEST CORNER	103+61 LT	2	1.5	1.5	3		
6	JACKSON STREET - NORTHEAST CORNER	103+61 RT	2	1.5	1.5	3		
7	VAN BUREN STREET - SOUTHWEST CORNER	106+43 LT	2	1.5	1.5	3		
8	VAN BUREN STREET - SOUTHEAST CORNER (2)	106+43 RT	4	1.5	1.5	6		
9	VAN BUREN STREET - NORTHWEST CORNER	106+81 LT	2	1.5	1.5	3		
10	VAN BUREN STREET - NORTHEAST CORNER	106+81 RT	2	1.5	1.5	3		
11	MILL STREET - SOUTHWEST CORNER	109+66 LT	2	1.5	1.5	3		
12	MILL STREET - SOUTHEAST CORNER	109+66 RT	2	1.5	1.5	3		
13	MILL STREET - NORTHWEST CORNER	110+00 LT	2	1.5	1.5	3		
14	MILL STREET - NORTHEAST CORNER (2)	110+00 RT	4	1.5	1.5	6		
15	CANAL STREET - SOUTHWEST CORNER	112+85 LT	2	1.5	1.5	3		
16	CANAL STREET - SOUTHEAST CORNER	112+85 RT	2	1.5	1.5	3		
17	CANAL STREET - NORTHWEST CORNER (2)	113+20 LT	4	1.5	1.5	6		
18	NORTH STREET - SOUTHEAST CORNER	126+25 RT	2	1.5	1.5	3		
19	NORTH STREET - NORTHEAST CORNER	126+74 RT	2	1.5	1.5	3		
20	S. OUTER DRIVE - SOUTHEAST CORNER	131+95 RT	2	1.5	1.5	3		
21	S. OUTER DRIVE - NORTHEAST CORNER	132+35 RT	2	1.5	1.5	3		
22	N. OUTER DRIVE - SOUTHEAST CORNER	140+45 RT	2	1.5	1.5	3		
23	N. OUTER DRIVE - NORTHEAST CORNER	140+75 RT	2	1.5	1.5	3		
24	KANKAKEE RIVER DRIVE - SOUTHEAST CORNER	142+75 RT	2	1.5	1.5	3		
25	KANKAKEE RIVER DRIVE - NORTHEAST CORNER (2)	143+20 RT	4	1.5	1.5	6		
TOTAL 90								

NO.	LOCATION	STATION	LENGTH		WIDTH		AREA	
			FT	FT	FT	FT	SF	SF
1	BALTIMORE STREET - NORTHWEST CORNER (2)	100+40 LT	13	5	5	65	RAMP	
2	BALTIMORE STREET - NORTHEAST CORNER (2)	100+40 RT	10	5	5	50	RAMP	
3	JACKSON STREET - SOUTHWEST CORNER	103+22 LT	5	5	5	25	RAMP	
4	JACKSON STREET - SOUTHWEST CORNER (2)	103+22 RT	10	5	5	50	RAMP	
5	JACKSON STREET - NORTHWEST CORNER	103+61 LT	5	5	5	25	RAMP	
6	JACKSON STREET - NORTHEAST CORNER (2)	103+61 RT	5	5	5	25	RAMP	
7	VAN BUREN STREET - SOUTHWEST CORNER	106+43 LT	5	5	5	25	RAMP	
8	VAN BUREN STREET - SOUTHWEST CORNER (2)	106+43 RT	10	5	5	50	RAMP	
9	VAN BUREN STREET - NORTHWEST CORNER	106+81 LT	5	5	5	25	RAMP	
10	VAN BUREN STREET - NORTHEAST CORNER (2)	106+81 RT	9	5	5	45	RAMP	
11	MILL STREET - SOUTHWEST CORNER	109+66 LT	5	5	5	25	RAMP	
12	MILL STREET - SOUTHWEST CORNER (2)	109+66 RT	5	5	5	25	RAMP	
13	MILL STREET - NORTHWEST CORNER	110+00 LT	5	4	4	20	RAMP	
14	MILL STREET - NORTHWEST CORNER (2)	110+00 RT	10	5	5	50	RAMP	
15	MILL STREET - SOUTHWEST CORNER	112+85 LT	5	5	5	25	RAMP	
16	MILL STREET - SOUTHWEST CORNER (2)	112+85 RT	7	5	5	35	RAMP	
17	CANAL STREET - NORTHWEST CORNER	113+20 LT	7	8	8	56	RAMP	
18	CANAL STREET - SOUTHWEST CORNER	112+85 RT	7	5	5	35	RAMP	
19	CANAL STREET - SOUTHWEST CORNER (2)	113+20 RT	7	8	8	56	RAMP	
20	NORTH STREET - SOUTHWEST CORNER	126+25 LT	6	5	5	30	RAMP	
21	NORTH STREET - SOUTHWEST CORNER (2)	126+74 LT	5	5	5	25	RAMP	
22	NORTH STREET - SOUTHWEST CORNER (2)	126+74 RT	5	5	5	25	RAMP	
23	S. OUTER DRIVE - SOUTHWEST CORNER	131+95 LT	5	4	4	20	RAMP	
24	S. OUTER DRIVE - SOUTHWEST CORNER (2)	132+35 LT	5	4	4	20	RAMP	
25	S. OUTER DRIVE - SOUTHWEST CORNER (2)	132+35 RT	5	4	4	20	RAMP	
26	N. OUTER DRIVE - SOUTHWEST CORNER	140+45 LT	5	4	4	20	RAMP	
27	N. OUTER DRIVE - SOUTHWEST CORNER (2)	140+75 LT	5	4	4	20	RAMP	
28	N. OUTER DRIVE - SOUTHWEST CORNER (2)	140+75 RT	5	4	4	20	RAMP	
29	KANKAKEE RIVER DRIVE - SOUTHWEST CORNER	142+75 LT	5	5	5	25	RAMP	
30	KANKAKEE RIVER DRIVE - SOUTHWEST CORNER (2)	143+20 LT	10	5	5	50	RAMP	
TOTAL 6,811								

NO.	LOCATION	STATION	LENGTH	
			FT	FT
1	BALTIMORE STREET - NORTHWEST CORNER (2)	100+40 LT	10	
2	BALTIMORE STREET - NORTHEAST CORNER (2)	100+40 RT	10	
3	JACKSON STREET - SOUTHWEST CORNER	103+22 LT	5	
4	JACKSON STREET - SOUTHWEST CORNER (2)	103+22 RT	10	
5	JACKSON STREET - NORTHWEST CORNER	103+61 LT	5	
6	JACKSON STREET - NORTHEAST CORNER	103+61 RT	5	
7	VAN BUREN STREET - SOUTHWEST CORNER	106+43 LT	5	
8	VAN BUREN STREET - SOUTHWEST CORNER (2)	106+43 RT	10	
9	VAN BUREN STREET - NORTHWEST CORNER	106+81 LT	5	
10	VAN BUREN STREET - NORTHEAST CORNER (2)	106+81 RT	10	
11	MILL STREET - SOUTHWEST CORNER	109+66 LT	5	
12	MILL STREET - SOUTHWEST CORNER (2)	109+66 RT	5	
13	MILL STREET - NORTHWEST CORNER	110+00 LT	5	
14	MILL STREET - NORTHWEST CORNER (2)	110+00 RT	10	
15	CANAL STREET - SOUTHWEST CORNER	112+85 LT	5	
16	CANAL STREET - SOUTHWEST CORNER (2)	112+85 RT	5	
17	CANAL STREET - NORTHWEST CORNER	113+20 LT	8	
18	NORTH STREET - SOUTHWEST CORNER	126+25 RT	5	
19	NORTH STREET - NORTHEAST CORNER	126+74 RT	5	
20	S. OUTER DRIVE - SOUTHWEST CORNER	131+95 RT	5	
21	S. OUTER DRIVE - NORTHEAST CORNER	132+35 RT	5	
22	N. OUTER DRIVE - SOUTHWEST CORNER	140+45 RT	5	
23	N. OUTER DRIVE - NORTHEAST CORNER	140+75 RT	5	
24	KANKAKEE RIVER DRIVE - SOUTHWEST CORNER	142+75 RT	5	
25	KANKAKEE RIVER DRIVE - NORTHEAST CORNER (2)	143+20 RT	10	
TOTAL 168				

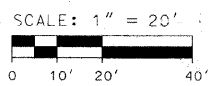
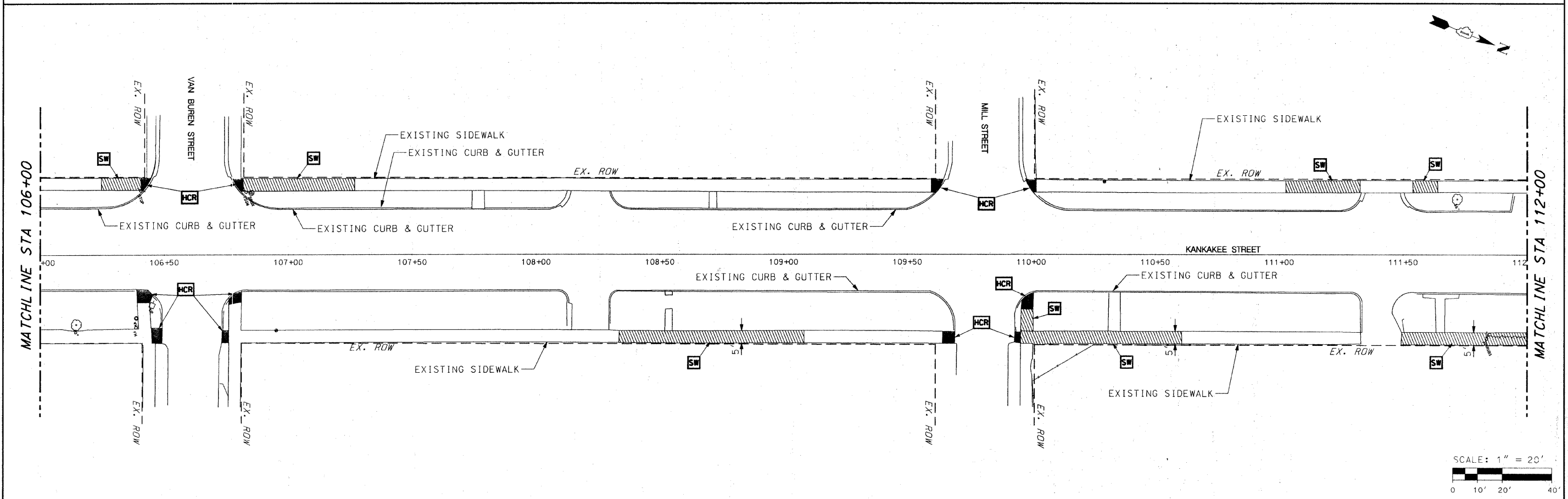
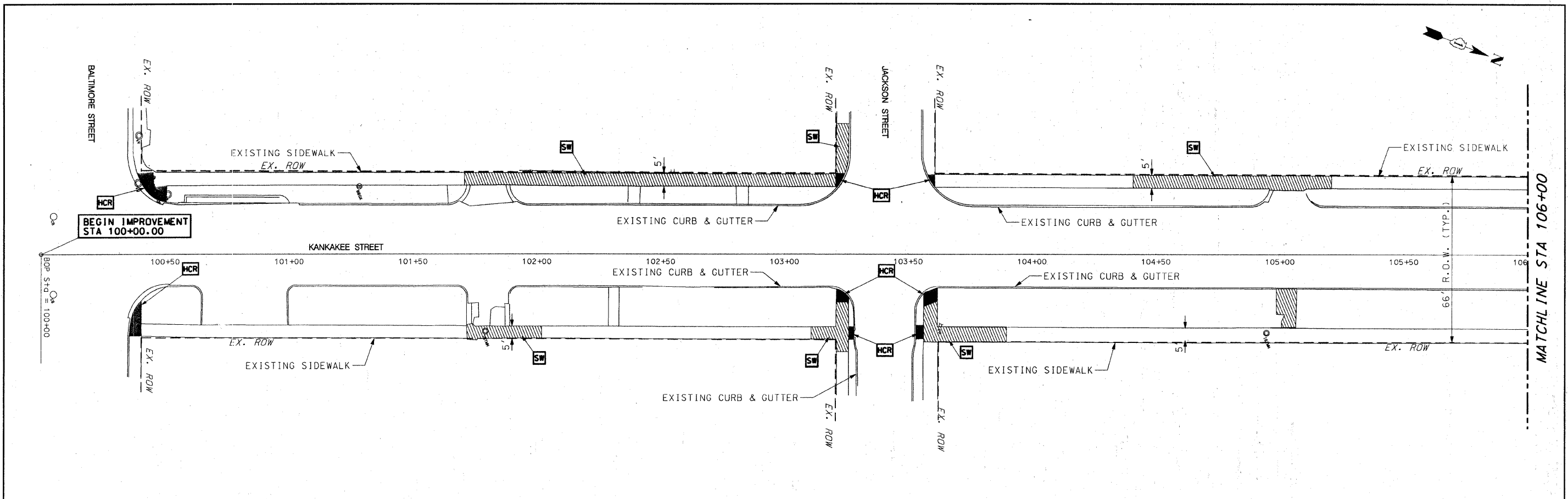
FILE NAME =	USER NAME = #USER#	DESIGNED - CCZ	REVISED - 10-12-2009 DWS
#FILE#		DRAWN - DWS	REVISED - 10-19-09 CCZ
	PLOT SCALE = #SCALE#	CHECKED - JAR	REVISED - 11-12-09 CCZ
	PLOT DATE = #DATE#	DATE - 09-23-2009	REVISED -

STATE OF ILLINOIS
DEPARTMENT OF TRANSPORTATION

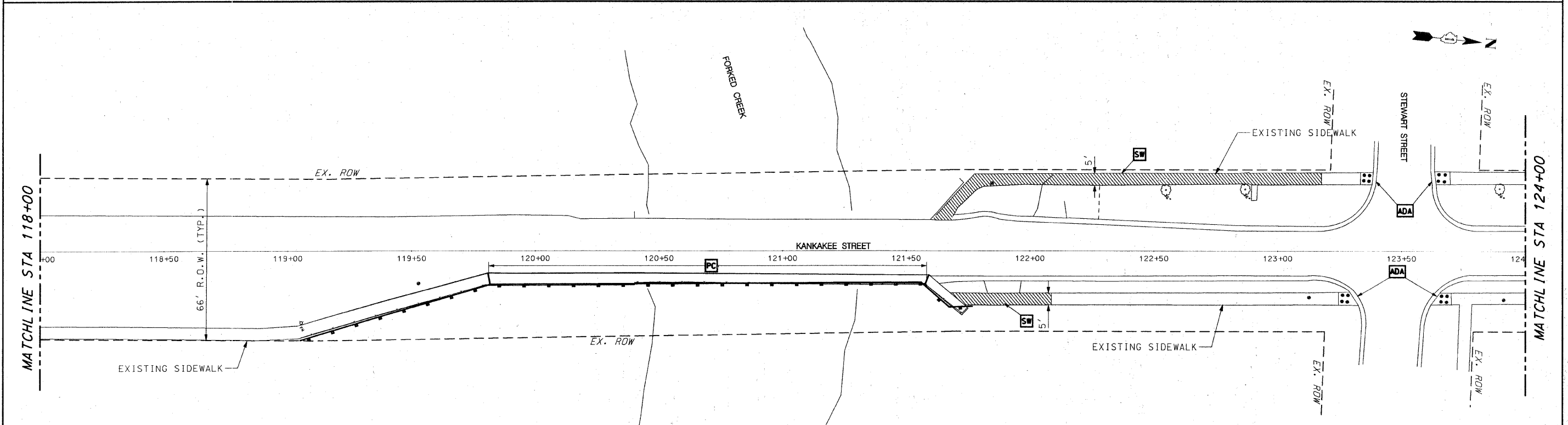
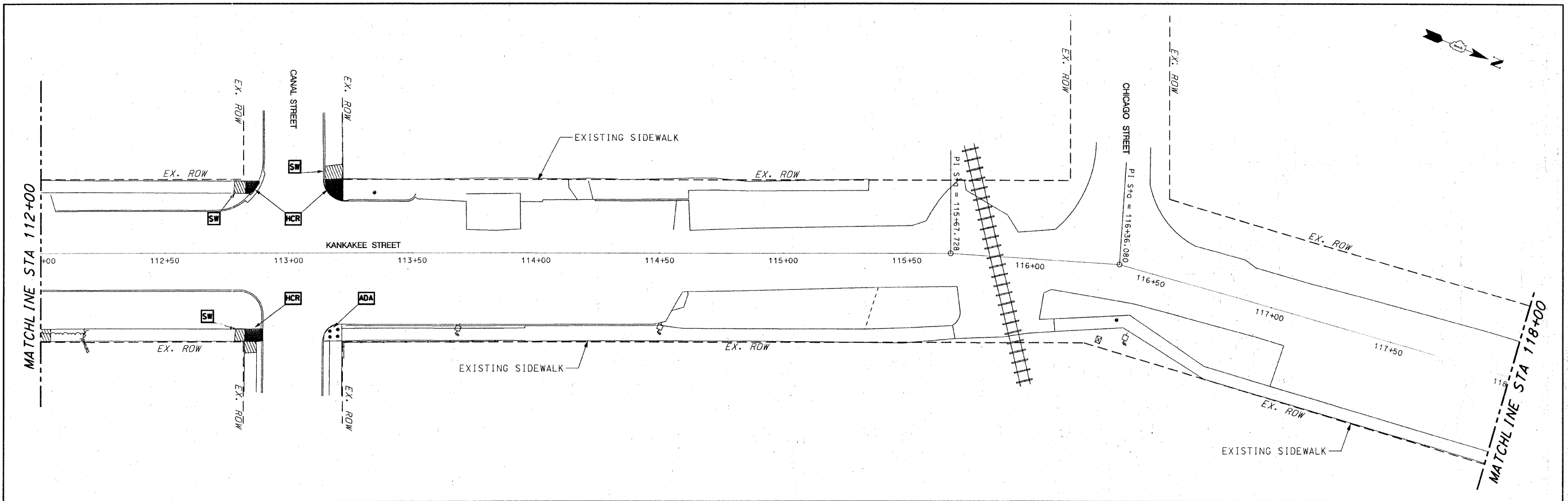
Summary, Schedule of Quantities & Typical Sections

SCALE: NONE SHEET NO. 3 OF 7 SHEETS STA. TO STA.

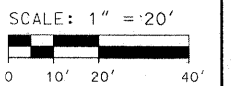
F.A.U. R.T.E.	SECTION	COUNTY	TOTAL SHEETS	SHEET NO.
0321	09-0043-00-SW	WILL	7	3
PROJECT ARA - 9003(513)		CONTRACT NO. 63392		
FED. ROAD DIST. NO. [ILLINOIS] FED. AID PROJECT				



FILE NAME =	USER NAME = #USER#	DESIGNED - CCZ	REVISED - 10-12-2009 DWS	STATE OF ILLINOIS DEPARTMENT OF TRANSPORTATION	PLAN SHEET			F.A.U. RTE. 0321	SECTION 09-00043-00-SW	COUNTY WILL	TOTAL SHEETS 7	SHEET NO. 4
#FILE#		DRAWN - DWS	REVISED - 11-12-2009 CCZ		SCALE: 1"=20'	SHEET NO. 4 OF 7 SHEETS	STA. 100+00 TO STA. 112+00	PROJECT ARA - 9003(513)	CONTRACT NO. 63392			
		CHECKED - JAR	REVISED -									
		DATE - 09-23-2009	REVISED -									



NOTE:
 LOCATION OF POLYMER CONCRETE (PC) IS TO
 BE DIRECTED BY THE ENGINEER ON THE FACE
 OF CURB LOCATIONS.



FILE NAME =	USER NAME = *USER*
FILE#	
PLOT SCALE = *SCALE*	
PLOT DATE = *DATE*	

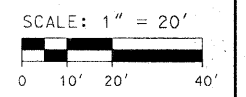
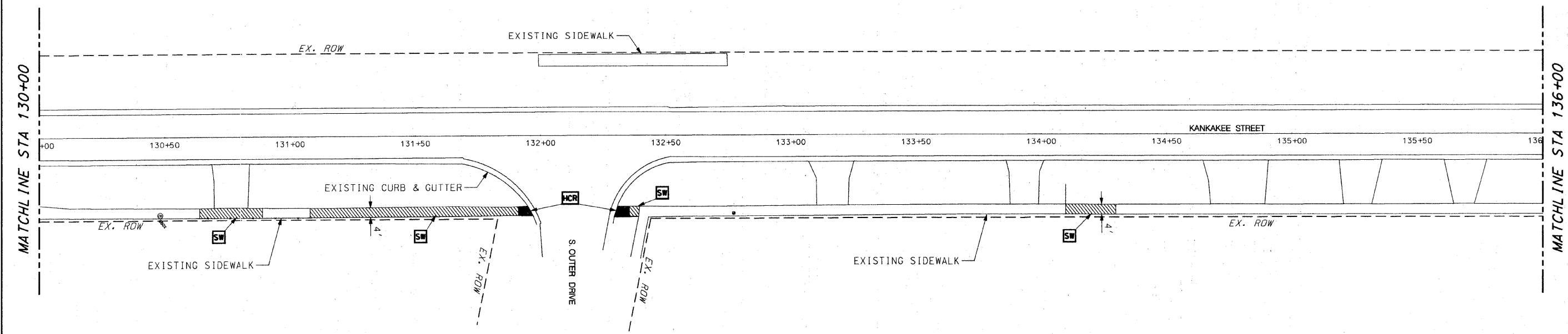
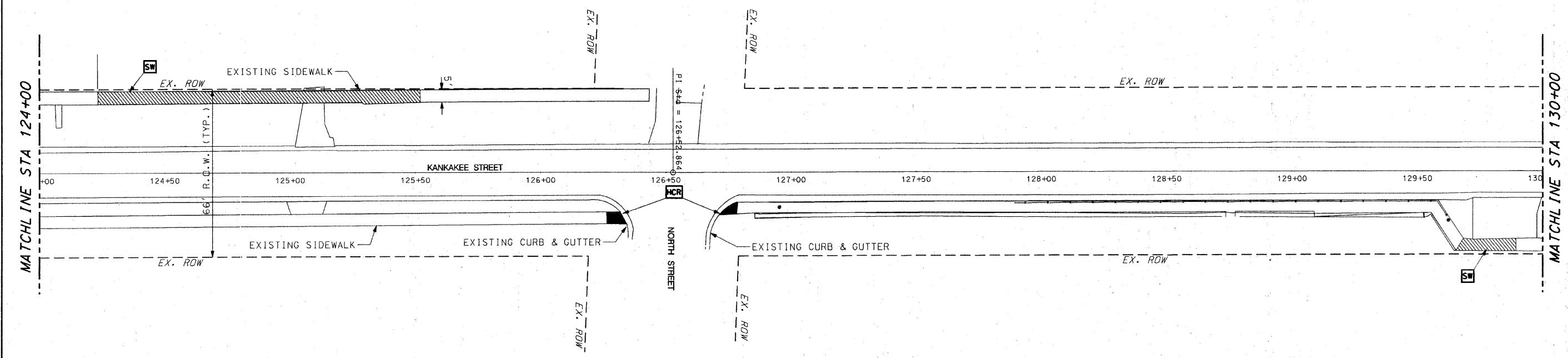
DESIGNED - CCZ	REVISD - 10-12-2009 DWS
DRAWN - DWS	REVISD - 11-12-2009 CCZ
CHECKED - JAR	REVISD -
DATE - 09-23-2009	REVISD -

DESIGNED - CCZ	REVISD - 10-12-2009 DWS
DRAWN - DWS	REVISD - 11-12-2009 CCZ
CHECKED - JAR	REVISD -
DATE - 09-23-2009	REVISD -

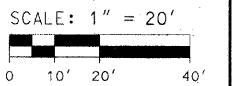
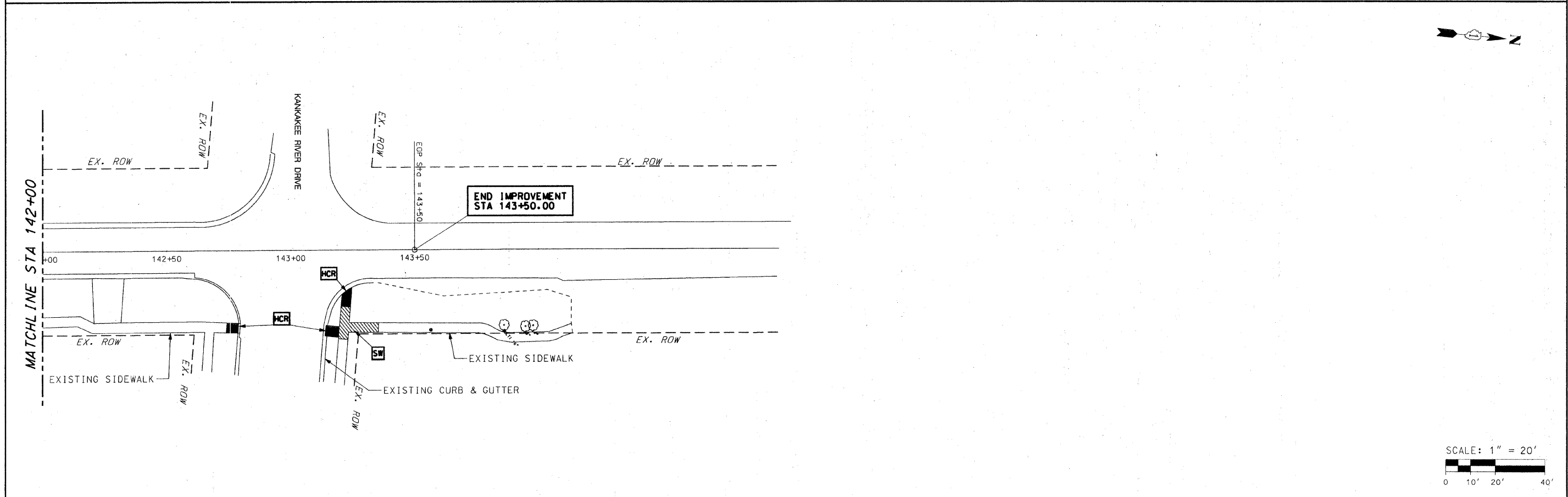
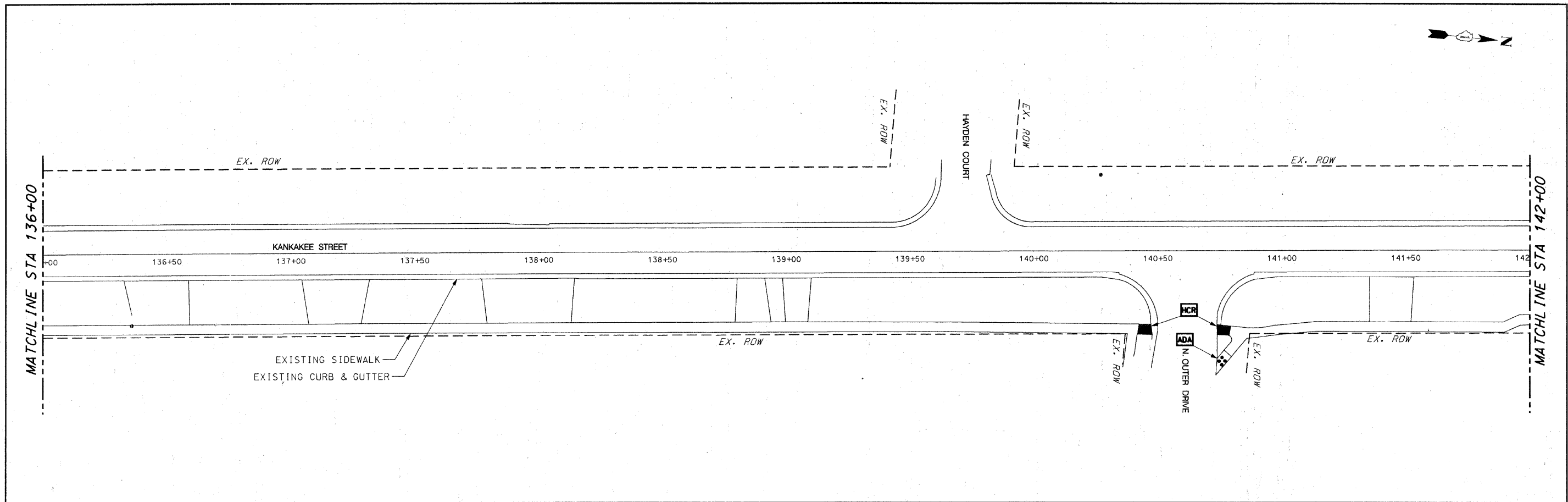
**STATE OF ILLINOIS
 DEPARTMENT OF TRANSPORTATION**

PLAN SHEET	
SCALE: 1"=20'	SHEET NO. 5 OF 7 SHEETS
STA. 112+00	TO STA. 124+00

F.A.U. RTE.	SECTION	COUNTY	TOTAL SHEETS	SHEET NO.
0321	09-00043-00-SW	WILL	7	5
PROJECT ARA - 9003(513)		CONTRACT NO. 63392		
FED. ROAD DIST. NO. ILLINOIS FED. AID PROJECT				



FILE NAME =	USER NAME = #USER#	DESIGNED - CCZ	REVISED - 10-12-2009 DWS	STATE OF ILLINOIS DEPARTMENT OF TRANSPORTATION	PLAN SHEET	F.A.U. RTE.	SECTION	COUNTY	TOTAL SHEETS	SHEET NO.	
*FILE#		DRAWN - DWS	REVISED - 11-12-2009 CCZ			0321	09-00043-00-SW	WILL	7	6	
	PLOT SCALE = #SCALE#	CHECKED - JAR	REVISED -			PROJECT ARA - 9003(513)		CONTRACT NO. 63392			
	PLOT DATE = #DATE#	DATE - 09-23-2009	REVISED -			FED. ROAD DIST. NO. [ILLINOIS] FED. AID PROJECT					
				SCALE: 1"=20'		SHEET NO. 6 OF 7 SHEETS		STA. 124+00 TO STA. 136+00			



FILE NAME =	USER NAME = #USER#	DESIGNED - CCZ	REVISED - 10-12-2009 DWS	STATE OF ILLINOIS DEPARTMENT OF TRANSPORTATION	PLAN SHEET	F.A.U. RTE.	SECTION	COUNTY	TOTAL SHEETS	SHEET NO.	
#FILEL#		DRAWN - DWS	REVISED - 11-12-2009 CCZ			0321	09-00043-00-SW	WILL	7	7	
	PLOT SCALE = #SCALE#	CHECKED - JAR	REVISED -			PROJECT ARA - 9003(513)		CONTRACT NO. 63392			
	PLOT DATE = #DATE#	DATE - 09-23-2009	REVISED -			SCALE: 1"=20'		SHEET NO. 7 OF 7 SHEETS		STA. 136+00 TO STA. 145+00	