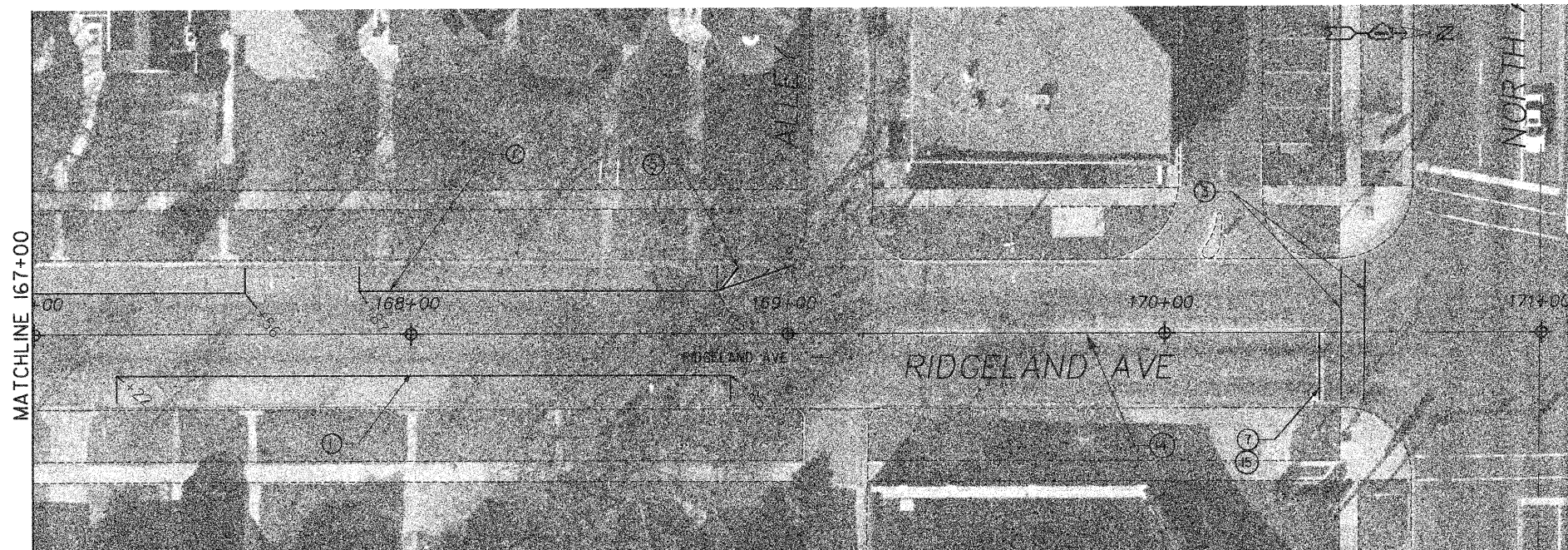


F.A.U. ROUTE	SECTION	COUNTY	TOTAL SHEETS	SHEET No.
2783	09-00247-00-RS	COOK	27	17
PAVEMENT MARKINGS				
FED. ROAD DISTR. No. 1	ILLINOIS	CONTRACT NO. 63397		



- | | |
|--|--|
| ① THERMOPLASTIC PAVEMENT MARKING
LINE 4-IN. WHITE EDGE LINE | ⑧ THERMOPLASTIC PAVEMENT MARKING
LINE 4-IN. DOUBLE YELLOW CENTER LINE |
| ② THERMOPLASTIC PAVEMENT MARKING
LINE 4-IN. WHITE DOTTED | ⑨ THERMOPLASTIC PAVEMENT MARKING
LINE 4-IN. YELLOW SKIP DASH |
| ③ THERMOPLASTIC PAVEMENT MARKING
LINE 6-IN. WHITE | ⑩ THERMOPLASTIC PAVEMENT MARKING
LETTERS & SYMBOLS WHITE |
| ④ THERMOPLASTIC PAVEMENT MARKING
4-IN. WHITE SKIP DASH TURN LANE | ⑪ THERMOPLASTIC PAVEMENT MARKING
LINE 12-IN. YELLOW |
| ⑤ THERMOPLASTIC PAVEMENT MARKING
12-IN. WHITE DIAGONALS 15' C-C @ 45 DEG. | ⑫ THERMOPLASTIC PAVEMENT MARKING
LINE 8-IN. WHITE |
| ⑥ THERMOPLASTIC PAVEMENT MARKING
12-IN. WHITE @ 90 DEG. @ 2' C-C | ⑬ TEMPORARY PAINT PAVEMENT MARKING
LETTERS AND SYMBOLS |
| ⑦ THERMOPLASTIC PAVEMENT MARKING
24-IN. WHITE STOP BAR | ⑭ TEMPORARY PAINT PAVEMENT MARKING
LINE 4-IN. YELLOW (4' X 40') |
| | ⑮ TEMPORARY PAINT PAVEMENT MARKING
LINE 24-IN. WHITE |

REVISIONS:	
Dec 2, 2009	RB

ILLINOIS DEPARTMENT OF TRANSPORTATION
 F.A.U. ROUTE 2783 - RIDGELAND AVENUE

PAVEMENT MARKINGS
 STA 167+00 TO STA 170+56

SCALE: 1"=20' (24X36)
 HALF SIZE (11X17)

DATE: 9/10/09

DRAWN: LB
 CHECKED: RB