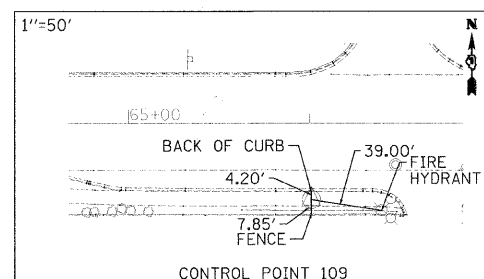
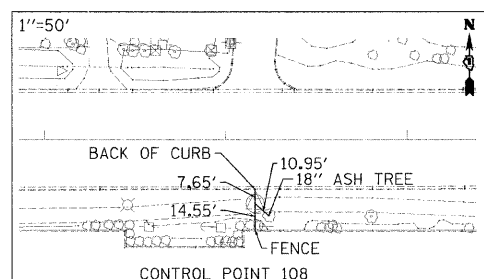
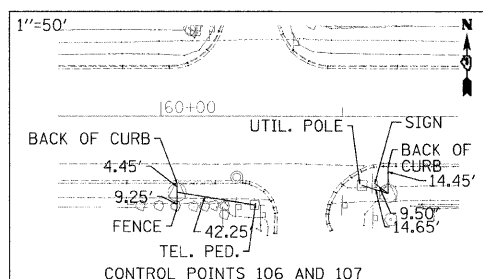
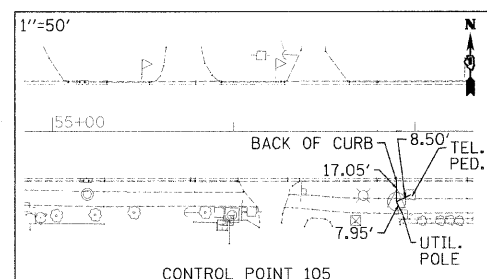
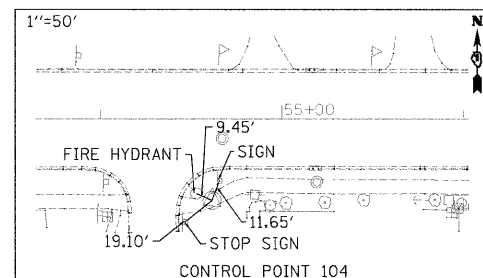
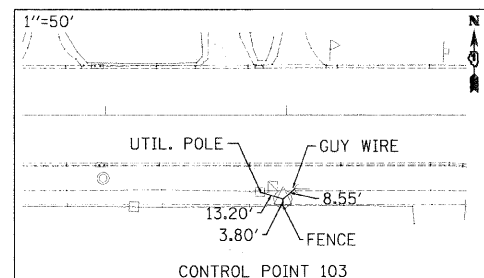
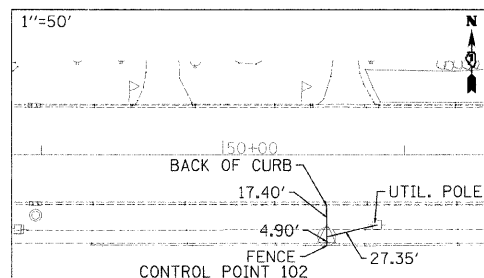
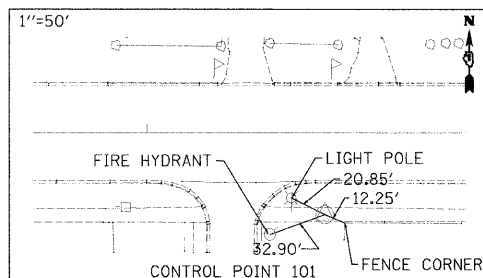
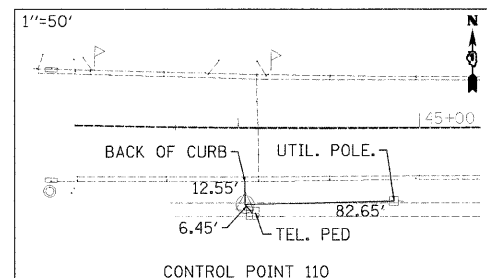


POINT	NORTHING	EASTING	STATION
40002	1,893,026.35	986,656.58	43+65.56
40003	1,893,098.93	989,352.07	70+62.03



**BENCHMARKS**

BENCHMARK	ELEVATION	DESCRIPTION
402	714.62	CHISELED SO. IN THE SW CORNER OF BRITTA LANE AND VAN NORTWICK AVE. 204' SOUTH OF FABYAN PARKWAY.
403	707.98	CHISELED SO. ON THE HEADWALL OF CULVERT ON THE NORTHSIDE OF FABYAN PARKWAY 400' WEST OF BATAVIA AVE.

**CONTROL POINTS**

POINT	NORTHING	EASTING	ELEVATION	DESCRIPTION
100	1,893,153.5250	989,046.5898	712.26	PK NAIL
101	1,892,993.1410	987,090.2333	714.71	PK NAIL
102	1,892,999.6480	987,349.1634	716.81	PK NAIL
103	1,893,005.3760	987,589.8946	717.75	PK NAIL
104	1,893,011.1370	987,753.2148	717.86	PK NAIL
105	1,893,023.2850	987,981.2909	718.11	PK NAIL
106	1,893,028.6040	988,300.4459	719.24	PK NAIL
107	1,893,031.2080	988,416.7410	719.31	PK NAIL
108	1,893,043.6572	988,607.5813	718.57	PK NAIL
109	1,893,044.4940	988,892.1088	714.11	PK NAIL

FILE NAME = #FILE#	USER NAME = #USER# PLOT SCALE = #SCALE# PLOT DATE = #DATE#	DESIGNED RDT DRAWN RDT CHECKED JAC DATE 12-08-09	REVISED REVISED REVISED REVISED	<b>STATE OF ILLINOIS</b> <b>DEPARTMENT OF TRANSPORTATION</b>	<b>FABYAN PARKWAY</b> <b>ALIGNMENTS, TIES AND BENCHMARKS</b>	F.A.P. RTE. 363 SECTION 08-00370-00-SP COUNTY KANE TOTAL SHEETS 32 SHEET NO. 7 CONTRACT NO. 63416 <small>ILLINOIS FED. AID PROJECT HSIP-9003 (056)</small>
SCALE: 1"=100' SHEET NO. 7 OF 33 SHEETS STA. 43+65.56 TO STA. 70+62.03						