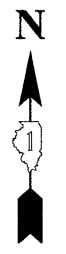
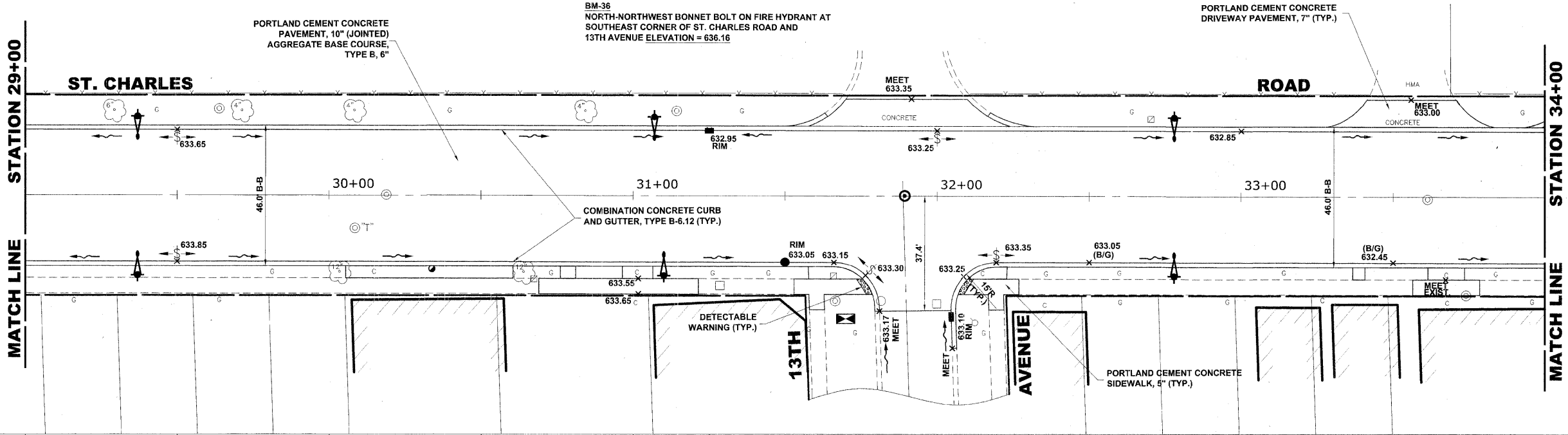
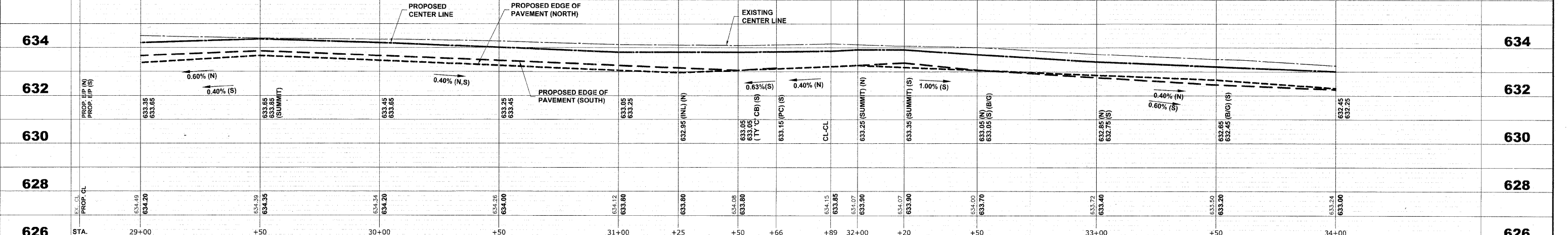


EXISTING TOPOGRAPHY



PROPOSED IMPROVEMENT



HANCOCK ENGINEERING Civil Engineers Municipal Consultants Established 1911	USER NAME - DESIGNED - MK/SBC DRAWN - MK/LEV CHECKED - SBC/JG/MV PLOT DATE -	REVISED - REVISED - REVISED - REVISED -	DATE - 11-30-09	STATE OF ILLINOIS DEPARTMENT OF TRANSPORTATION				ST. CHARLES ROAD PAVING PLAN AND PROFILE			P.A.U. RTE. 1397 SECTION 09-00129-00-PV COUNTY COOK CONTRACT NO. 63428 (BOOK NOS. 1579, 1583, 1589) E.H.E. PROJECT NO. 565-08-29001
	PLOT SCALE - PLOT DATE -	DATE - 11-30-09	SCALE: 1"=20'H./2V. SHEET NO. 6 OF 11 SHEETS STA. 29+00 TO STA. 34+00	TOTAL SHEETS NO. 26 SHEET NO. 103 FED. ROAD DIST. NO. 1 ILLINOIS FED. AID PROJECT M-9003 (267)							

Drawing file: W:\Projects\565082900 - St. Charles Rd\St. Charles Rd.dwg Dec 07, 2009 - 10:16am