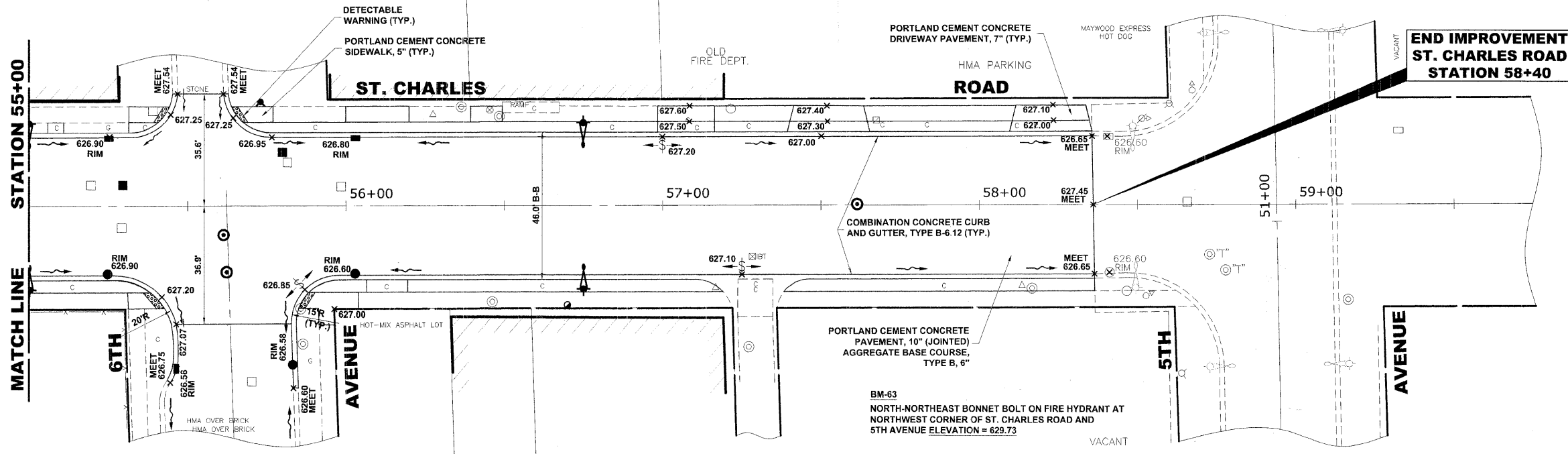
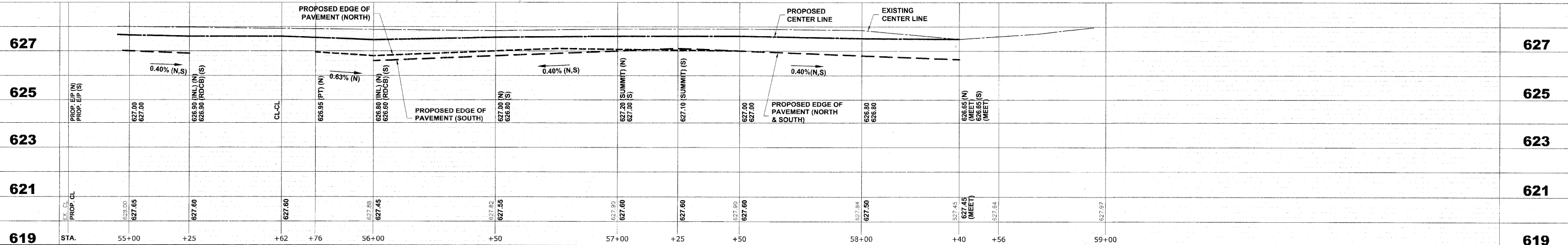


EXISTING TOPOGRAPHY



PROPOSED IMPROVEMENT



Drawing file: \\Projects\65052900 - St. Charles Rd\St. Charles Rd.dwg Dec 07, 2009 - 10:17am

HANCOCK ENGINEERING
 Civil Engineers
 Municipal Consultants
 Established 1911

USER NAME	DESIGNED - MK/SBC	REVISED -
DRAWN - MK/LEV	CHECKED - SBC/JG/MV	REVISED -
DATE - 11-30-09		REVISED -

STATE OF ILLINOIS DEPARTMENT OF TRANSPORTATION

ST. CHARLES ROAD PAVING PLAN AND PROFILE
 SCALE: 1"=20'H/2'V. SHEET NO. 11 OF 11 SHEETS STA. 55+00 TO STA. 58+40

F.A.U. RTE.	SECTION	COUNTY	TOTAL SHEETS	SHEET NO.
1397	09-00129-00-PV	COOK	103	31
CONTRACT NO. 63428				
FED. ROAD DIST. NO. 1 ILLINOIS FED. AID PROJECT M-9003 (267)				
(BOOK NOS. 1579, 1583, 1589) E.H.E. PROJECT NO. 565-08-29001				