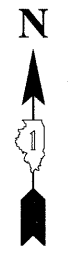
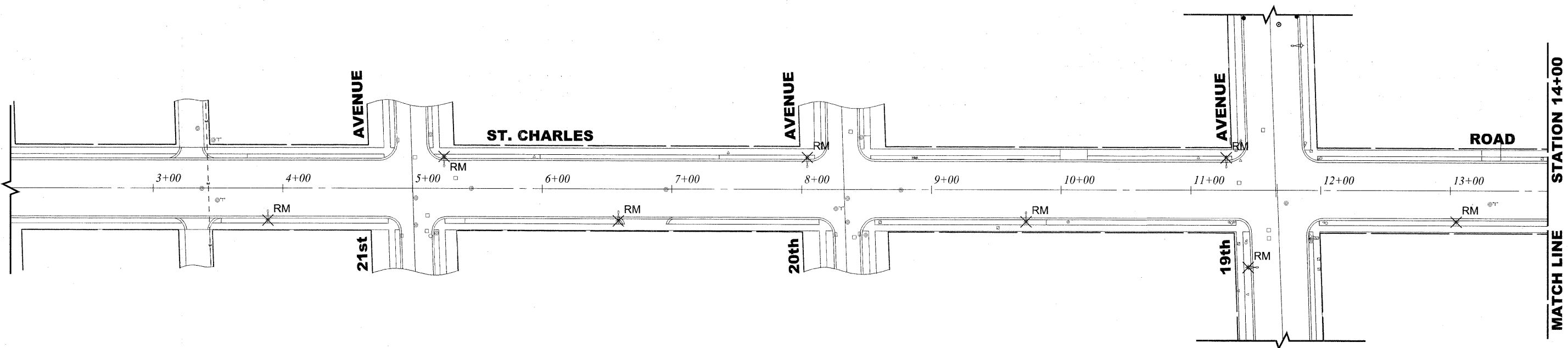
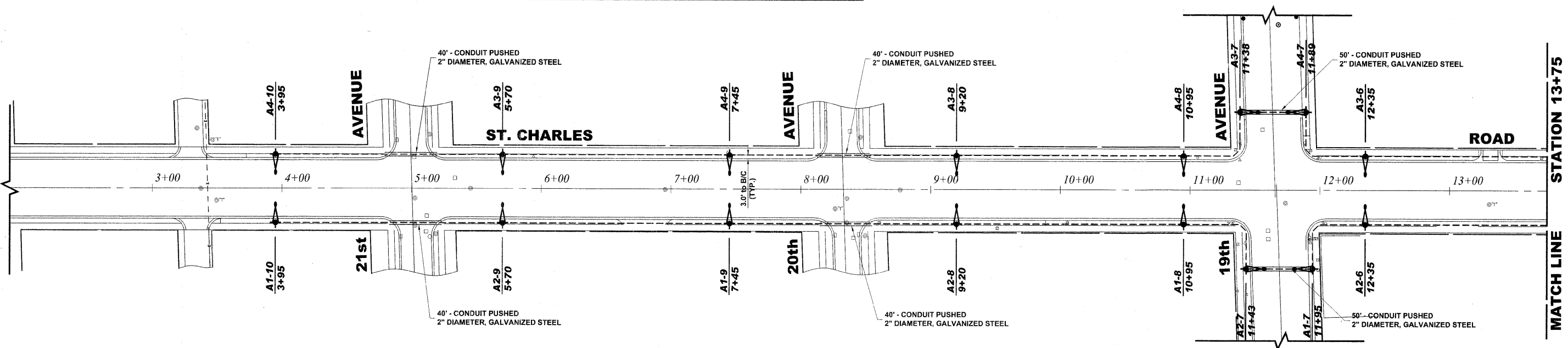


Drawing file: W:\Projects\15502290 - St. Charles Rd\50_St. Charles Lighting.dwg Nov 30, 2009 - 2:53pm



LEGEND OF SYMBOLS			
	EXISTING POST TOP LIGHT POLE AND FIXTURE TO BE REMOVED		EXISTING OVERHEAD WIRING
	EXISTING LIGHT POLE AND FIXTURE TO BE REMOVED		PROPOSED UNIT DUCT WITH 3-1/2" No. 6 & 1-1/2" No. 8 GROUND, 600V (XLP-(TYPE USE)), 1" DIAMETER OR AS NOTED, BORED & PULLED
	PROPOSED 35' MH POLE WITH 6' ARM & 250 WATT METAL HALIDE LAMP		PROPOSED GALVANIZED STEEL CONDUIT IN TRENCH OR PUSHED AS NOTED
	PROPOSED CONTROL CENTER		CONTROLLER IDENTIFICATION (TYP.) CIRCUIT NUMBER (TYP.) POLE NUMBER (TYP.) STATION NUMBER (TYP.)

EXISTING TOPOGRAPHY



PROPOSED IMPROVEMENT

HANCOCK ENGINEERING
 Civil Engineers
 Municipal Consultants
 Established 1911

9433 Rivercrest Blvd
 Westchester, Illinois 60154-2780
 Phone: 708.963.0800
 Fax: 708.963.1232

USER NAME -	DESIGNED - MK/SBC	REVISED -
PLOT SCALE -	DRAWN - MK/LEV	REVISED -
PLOT DATE -	CHECKED - SBC/JGMV	REVISED -
	DATE - 11-30-09	REVISED -

STATE OF ILLINOIS
DEPARTMENT OF TRANSPORTATION

ILLUMINATION PLAN

SCALE: 1" = 40' SHEET NO. 1 OF 5 SHEETS STA. 3+50 TO STA. 13+75

F.A.U. RTE.	SECTION	COUNTY	TOTAL SHEETS	SHEET NO.
1397	09-00129-00-PV	COOK	103	52
CONTRACT NO. 63428				
FED. ROAD DIST. NO. 1 ILLINOIS FED. AID PROJECT M-9003 (267)				
(BOOK NOS. 1579, 1583, 1589) E.H.E PROJECT NO. 565-08-29001				