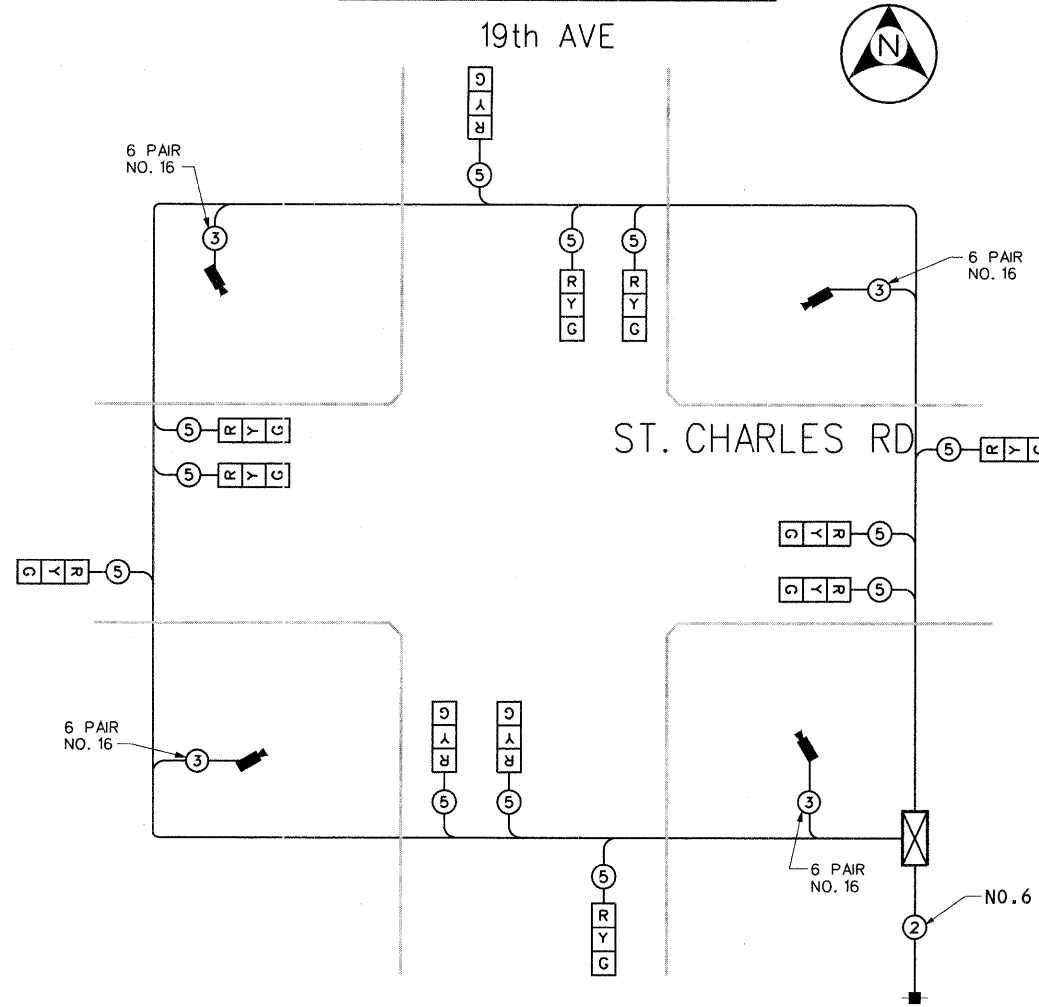


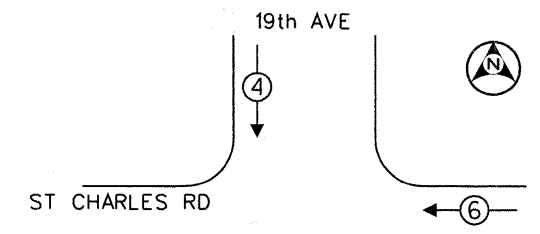
TEMPORARY CABLE PLAN



TEMPORARY CABLE DIAGRAM LEGEND

- TEMPORARY TRAFFIC SIGNAL SECTION OR PEDESTRIAN SIGNAL SECTION 12"
- TEMPORARY CONTROLLER CABINET
- PROPOSED SERVICE INSTALLATION
- INDICATES NUMBER OF CONDUCTORS IN CABLE. ALL CONDUCTORS TO BE NUMBER 14 A.W.G. WIRE UNLESS OTHERWISE NOTED.
- EMERGENCY VEHICLE LIGHT DETECTOR
- CONFIRMATION BEACON
- VEHICLE DETECTOR, INDUCTION LOOP
- PEDESTRIAN PUSHBUTTON DETECTOR
- 12" (300MM) PEDESTRIAN SIGNAL SECTION
- VIDEO VEHICLE DETECTION UNIT
- GROUND ROD AT CONTROLLER (C) OR ELECTRIC SERVICE INSTALLATION (S)

TEMPORARY CONTROLLER SEQUENCE



LEGEND

- SINGLE ENTRY PHASE
- DUAL ENTRY PHASE
- OVERLAP
- PEDESTRIAN PHASE
- * NUMBER REFERS TO ASSOCIATED PHASE.

PHASE DESIGNATION DIAGRAM

| I.D.O.T. TRAFFIC SIGNAL INSTALLATION ELECTRICAL SERVICE REQUIREMENTS | | | | | TOTAL WATTAGE |
|--|--------------|---------|------------------|------|---------------|
| TYPE | NO. OF LAMPS | WATTAGE | LED % OPERATIONS | | |
| SIGNAL (RED) | 12 | 135 | 17 | 0.50 | 102 |
| (YELLOW) | 12 | 135 | 25 | 0.25 | 75 |
| (GREEN) | 12 | 135 | 15 | 0.25 | 45 |
| ARROW | | 135 | 12 | 0.10 | |
| PED. SIGNAL | | 90 | 25 | 1.00 | |
| CONTROLLER | 1 | 100 | 100 | 1.00 | 100 |
| ILLUM. SIGN | | 84 | | 0.05 | |
| FLASHER | | | | 0.50 | |
| TOTAL = | | | | | 322.0 |

ENERGY COSTS TO: VILLAGE OF MAYWOOD
40 E. MADISON ST.
MAYWOOD, ILLINOIS 60153
(708) 344-1200

ENERGY SUPPLY - CONTACT: MICHAEL BELL
PHONE: (708) 410-5314
COMPANY: COMED

| FOUNDATION (DEPTH) | FT. (m) | CABLE SLACK | FT. (m) | VERTICAL | FT. (m) |
|--------------------|----------|------------------|-----------|-------------------|------------|
| TYPE A - POST | 4 (1.2) | HANDHOLE | 6.5 (2.0) | ALL FOUNDATIONS | 3.5 (1.1) |
| D - CONTROLLER | 4 (1.2) | DOUBLE HANDHOLE | 13 (4.0) | MAST ARM (L) POLE | 20'±L-2 = |
| E - M ARM POLE | | SIGNAL POST | 2 (1.0) | (6.1+L-1.0) = | |
| 24" (600mm) | 10 (3.0) | CONTROLLER CAB. | 1 (0.5) | BRACKET MOUNTED | 13 (4.0) |
| 30" (750mm) | 15 (4.6) | FIBER OPTIC | 13 (4.0) | PED. PUSHBUTTON | 4 (1.2) |
| 36" (900mm) | 15 (4.6) | ELECTRIC SERVICE | 1 (0.5) | ELECTRIC SERVICE | 13.5 (4.1) |
| | | GROUND CABLE | 1 (0.5) | SERVICE TO GROUND | 13.5 (4.1) |
| | | | | POST MOUNTED | 6 (1.8) |

HANCOCK ENGINEERING
Civil Engineers
Municipal Consultants
Established 1911

| | | |
|--------------|-----------------|-----------|
| USER NAME - | DESIGNED - DAP | REVISED - |
| PLOT SCALE - | DRAWN - DAP | REVISED - |
| PLOT DATE - | CHECKED - JAM | REVISED - |
| | DATE - 11-30-09 | REVISED - |

**STATE OF ILLINOIS
DEPARTMENT OF TRANSPORTATION**

TEMPORARY CABLE PLAN, AND PHASE DESIGNATION DIAGRAM
19th AVE & ST. CHARLES RD, MAYWOOD, IL

| | | | | |
|--------------------|------------------------|-------------|--|--------------|
| F.A.U. RTE. 1397 | SECTION 09-00129-00-PV | COUNTY COOK | TOTAL SHEETS 103 | SHEET NO. 80 |
| CONTRACT NO. 63428 | | | FED. ROAD DIST. NO. 1 ILLINOIS FED. AID PROJECT M-9003 (267) | |

PREPARED BY:
METRO TRANSPORTATION GROUP INC.
TRAFFIC ENGINEERING, TRANSPORTATION PLANNING,
TRANSPORTATION ENGINEERING, SIGNAL SYSTEMS/DESIGN
3100 W. HIGGINS ROAD, HOFFMAN ESTATES, IL 60169
PH# 630 213-1000 FAX# 630 213-3227