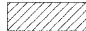



**CROSS SECTION LEGEND**

C = CUT (SQ. FT.)   
 F = FILL (SQ. FT.) 

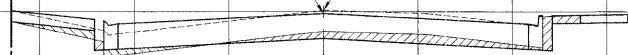
**PT**  
**13th AVE.**  
**SUMMIT (S)**

32+20

C = 14.1  
 F = 4.4

40.0 30.0 20.0 10.0 Q 10.0 20.0 30.0 40.0  
 33.0 NORTH R.O.W. 33.0 SOUTH R.O.W.

PROP. CL = 633.90  
 EXIST. CL = 634.07

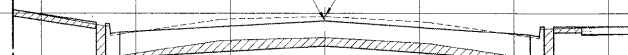


35+00

C = 24.8  
 F = 0.2

40.0 30.0 20.0 10.0 Q 10.0 20.0 30.0 40.0  
 33.0 NORTH R.O.W. 33.0 SOUTH R.O.W.

PROP. CL = 632.60  
 EXIST. CL = 632.83



**SUMMIT (N)**

32+00

C = 9.2  
 F = 5.5

PROP. CL = 633.90  
 EXIST. CL = 634.11



34+50

C = 20.8  
 F = 0.7

PROP. CL = 632.80  
 EXIST. CL = 633.04

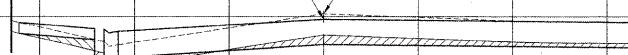


**CL-CL**  
**13th AVE.**

31+89

C = 14.4  
 F = 5.7

PROP. CL = 633.85  
 EXIST. CL = 634.15



34+00

C = 23.4  
 F = 1.0

PROP. CL = 633.00  
 EXIST. CL = 633.24



**PC**  
**13th AVE.**

31+66

C = 25.7  
 F = 0

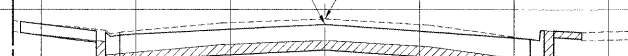
PROP. CL = 633.82  
 EXIST. CL = 634.08



33+50

C = 25.9  
 F = 0

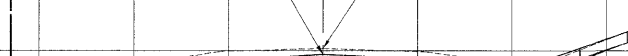
PROP. CL = 633.20  
 EXIST. CL = 633.50



31+00

C = 29.0  
 F = 0.6

PROP. CL = 633.80  
 EXIST. CL = 634.12



33+00

C = 30.7  
 F = 0

PROP. CL = 633.40  
 EXIST. CL = 633.72



30+50

C = 25.1  
 F = 0.7

PROP. CL = 634.00  
 EXIST. CL = 634.26



32+50

C = 27.9  
 F = 0

PROP. CL = 633.70  
 EXIST. CL = 634.00



40.0 30.0 20.0 10.0 Q 10.0 20.0 30.0 40.0  
 33.0 NORTH R.O.W. 33.0 SOUTH R.O.W.

40.0 30.0 20.0 10.0 Q 10.0 20.0 30.0 40.0  
 33.0 NORTH R.O.W. 33.0 SOUTH R.O.W.



USER NAME	DESIGNED - MK/SBC	REVISED
PLOT SCALE	DRAWN - MK/LEV	REVISED
PLOT DATE	CHECKED - SBC/JG/MV	REVISED
	DATE - 11-30-09	REVISED

**STATE OF ILLINOIS**  
**DEPARTMENT OF TRANSPORTATION**

**STATION CROSS SECTIONS**  
**ST. CHARLES ROAD**

SCALE: 1"=10'H/V. SHEET NO. 7 OF 12 SHEETS STA. 30+50 TO STA. 35+10

F.A.U. RTE.	SECTION	COUNTY	TOTAL SHEETS	SHEET NO.
1397	09-00129-00-PV	COOK	103	97
CONTRACT NO. 63428				
FED. ROAD DIST. NO. 1 ILLINOIS FED. AID PROJECT M-9003 (267)				

(BOOK NOS. 1579, 1583, 1589) E.H.E. PROJECT NO. 565-08-29001

Drawing file: W:\Projects\655082900 - St. Charles Rd\SECT\_ST CHARLES\SECT\_ST CHARLES.dwg Nov 25, 2009 - 4:55pm