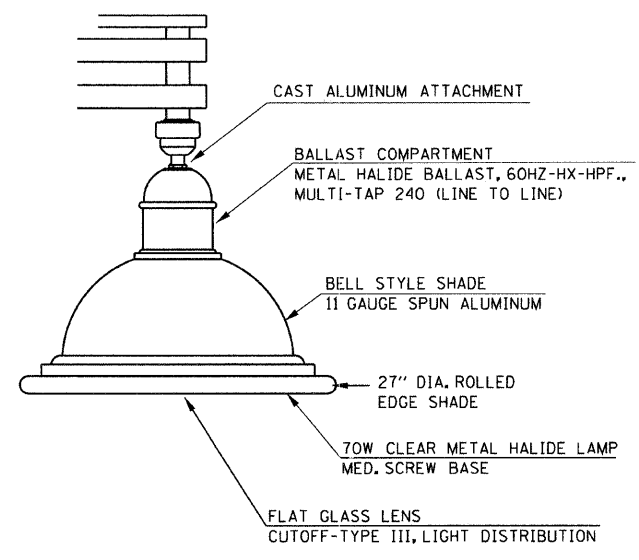
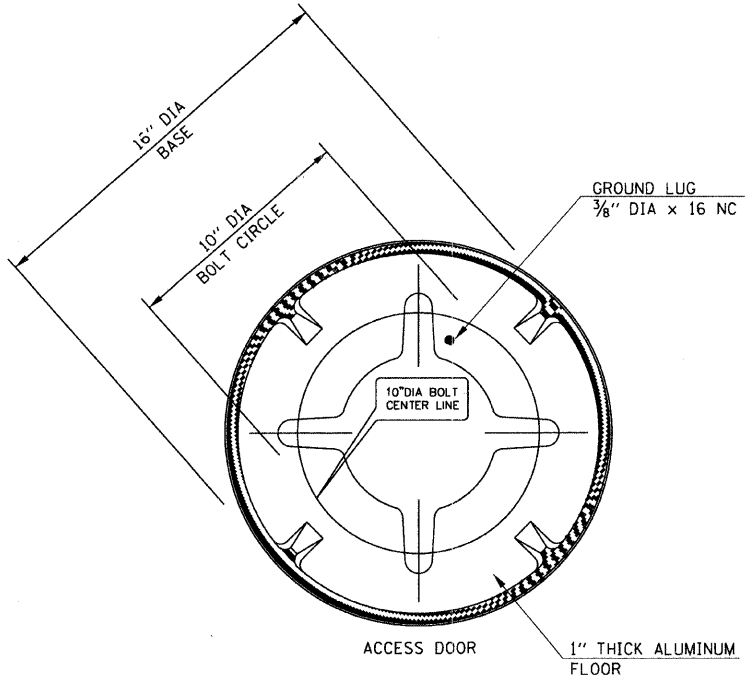


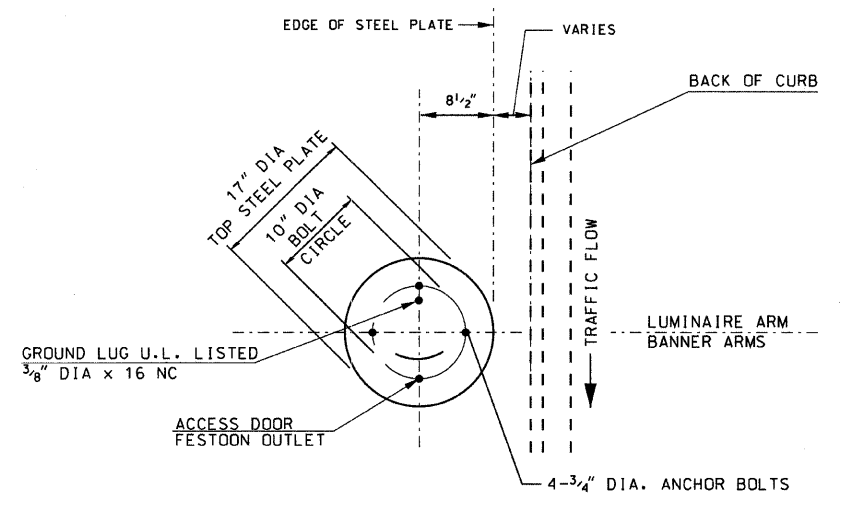
ORNAMENTAL LIGHT POLE, ALUMINUM WITH CONTEMPORARY ARM



LUMINAIRE BELL SHAPE SHADE PENDENT MOUNT



LIGHT POLE BASE DETAILS



POSITION OF ANCHOR BOLTS AND HANDHOLE

NOTES

1. THE LIGHTING UNIT SHALL COMPLY WITH THE ARTICLE 821-ROADWAY LUMINAIRE AND ARTICLE 830-LIGHT POLES OF THE STANDARD SPECIFICATIONS.
2. THE LIGHTING UNIT- THE POLE SHAFT WITH ARM AND LUMINAIRE SHALL BE PAINTED IN BLACK COLOR COAT.
3. ANCHOR BOLT CIRCLE AND BOLT SLOTS IN POLE BASE PLATE, SHALL BE VARIFIED WITH POLE MANUFACTURE.
4. LUMINAIRES ARE TO BE INSTALLED AS SOON AS POSSIBLE AFTER POLE ERECTED PER MANUFACTURER RECOMMENDATIONS. THE POLE WILL NOT BE PAID FOR UNTIL THE LUMINAIRE IS INSTALLED.
5. THE LIGHT POLE SHALL MEET 90 MPH WIND SPEED AASHTO DESIGN CRITERIA. THE CONTRACTOR SHALL FURNISH WIND LOAD CALCULATIONS MEETING AASHTO DESIGN CRITERIA.
6. THE DUCT SHALL EXTEND INTO POLE A MINIMUM OF 304.8 mm (12") ABOVE THE BASE.
7. LIGHT POLE AND LUMINAIRE SHALL BE U.L. LISTED AND LABELED



Sunjoy Inc.
Area Lighting
Consulting Engineers
212 TIMBERCREST DRIVE
SCHAUMBURG, ILLINOIS
60193-1572

REVISIONS	
NAME	DATE

ILLINOIS DEPARTMENT OF TRANSPORTATION
CITY OF BRAIDWOOD, WILL COUNTY
ILLINOIS ROUTE 113 (MAIN STREET)
ORNAMENTAL LIGHTING IMPROVEMENT
ORNAMENTAL LIGHT POLE WITH CONTEMPORARY ARM AND PENDENT MOUNT LUMINAIRE

SCALE: NTS
DATE: 10-15-09

DRAWN BY: HKQ
CHECKED BY: JS

REVISED 11-22-09