

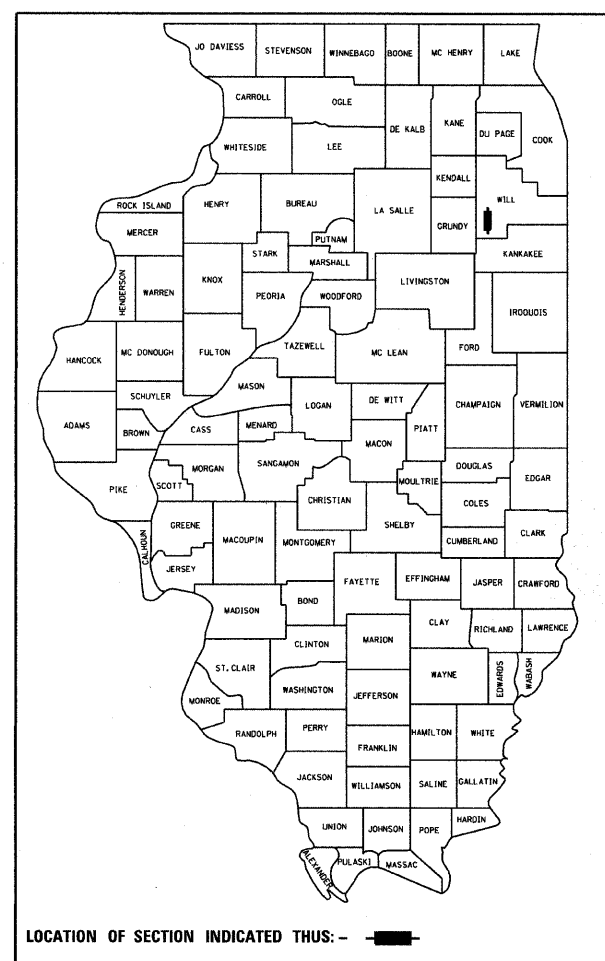
F.A.S. RTE.	SECTION	COUNTY	TOTAL SHEETS	SHEET NO.
2320	09-00012-00-LT	WILL	12	1

STATE OF ILLINOIS
DEPARTMENT OF TRANSPORTATION
DIVISION OF HIGHWAYS

**PLANS FOR PROPOSED
FEDERAL AID HIGHWAY
ORNAMENTAL STREET LIGHTING IMPROVEMENTS**
FAS ROUTE 2320 ILLINOIS ROUTE 113 (MAIN STREET)
SECTION 09-00012-00-LT
PROJECT ARA-9003(478)
JOB NO. C-91-045-10
CITY OF BRAIDWOOD
WILL COUNTY

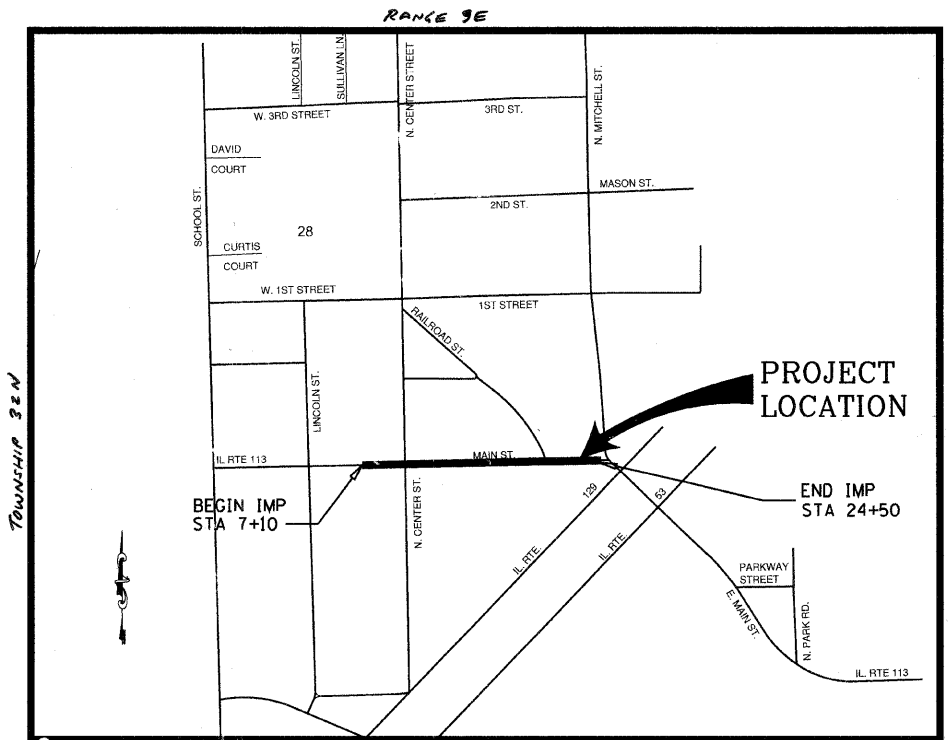
FOR INDEX OF SHEETS, SEE SHEET NO.

- 1) COVER SHEET
- 2) SUMMARY OF QUANTITIES, GENERAL NOTES AND LEGEND
- 3) EXISTING LIGHTING TO BE MAINTAINED AND REMOVED, STA. 7+00 TO STA. 17+00
- 4) EXISTING LIGHTING TO BE MAINTAINED AND REMOVED, STA. 17+00 TO STA. 25+00
- 5) PROPOSED LIGHTING STA. 7+10 TO STA. 17+00
- 6) PROPOSED LIGHTING STA. 17+00 TO STA. 25+00
- 7) ONE LINE CIRCUIT DIAGRAM
- 8) ORNAMENTAL LIGHT POLE WITH CONTEMPORARY ARM AND PENDENT MOUNT LUMINAIRE
- 9) LIGHT POLE FOUNDATION, METAL 10" BOLT CIRCLE, 8" x 8 FT
- 10) LIGHTING CONTROLLER, SPECIAL
- 11) ELECTRIC SERVICE INSTALLATION, POLE TOP MOUNTED TRANSFORMER
- 12) ELECTRIC DETAILS



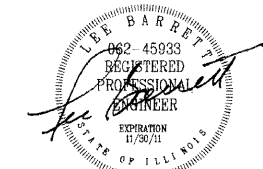
LIST OF STANDARDS:

701101-02-00	ROAD OPERATIONS, MULTILANE 15' TO 24' FROM PAVEMENT EDGE
701901-01	TRAFFIC CONTROL DEVICES
701501-05	URBAN LANE CLOSURE 2L, 2W, UNDIVIDED



SITE LOCATION MAP
NTS PROJECT LENGTH = 1,740 FEET
POSTED SPEED LIMIT: 25 MPH
IES ROAD AND AREA CLASSIFICATION : COLLECTOR MEDIUM
TRAFFIC ADT=5,800 (NO TRUCKS), 2007

ELECTRICAL ENGINEER



PROJECT DRAWINGS *E-1 TO *E-12 ARE PREPARED BY SUNJOY INC.

STATE OF ILLINOIS
DEPARTMENT OF TRANSPORTATION
DIVISION OF HIGHWAYS

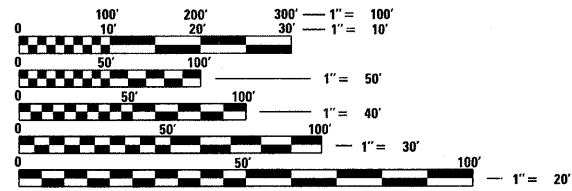
APPROVED November 24 20 09
Sue Grigal
CITY OF BRAIDWOOD

PASSED December 3 20 09
Chris Hetherington
REGION ONE ENGINEER OF LOCAL ROADS & STREETS

RELEASING FOR BID BASED ON LIMITED REVIEW December 8, 20 09
Diane M. O'Keefe
DEPUTY DIRECTOR OF HIGHWAYS, REGION ONE ENGINEER

PRINTED BY THE AUTHORITY OF THE STATE OF ILLINOIS

FIELD ENGINEER: MELCHOR MANGOBA (847) 705-4408



FULL SIZE PLANS HAVE BEEN PREPARED USING STANDARD ENGINEERING SCALES. REDUCED SIZED PLANS WILL NOT CONFORM TO STANDARD SCALES. IN MAKING MEASUREMENTS ON REDUCED PLANS, THE ABOVE SCALES MAY BE USED.

J.U.L.I.E.
JOINT UTILITY LOCATION INFORMATION FOR EXCAVATION
1-800-892-0123

CONTRACT NO. 63433

SUMMARY OF QUANTITIES

CONSTRUCTION TYPE CODE Y030-1E

CODE NO	DESCRIPTION	UNIT	QUANTITY
* 42400200	PORTLAND CEMENT CONCRETE SIDEWALK, 5"	SO. FT	825.00
* 44000600	SIDEWALK REMOVAL	SO. FT	825.00
67100100	MOBILIZATION	L. SUM	1.00
70102620	TRAFFIC CONTROL AND PROTECTION-701501	L. SUM	1.00
80400100	ELECTRIC SERVICE INSTALLATION	EACH	1.00
80400200	ELECTRIC UTILITY SERVICE CONNECTION	L. SUM	1.00
81000700	CONDUIT TRENCH, 2 1/2" DIA GALVANIZED STEEL	FOOT	130.00
81021370	CONDUIT PUSHED, 4" DIA PVC	FOOT	176.00
81702460	ELECTRIC CABLE IN CONDUIT 600 V (XLP-TYPE USE) 3-1/C NO. 3/0	FOOT	155.00
81900200	TRENCH AND BACKFILL FOR ELECTRICAL WORK	FOOT	500.00
82500505	LIGHTING CONTROLLER, SPECIAL	EACH	1.00
84200806	REMOVAL OF POLE FOUNDATION, CONCRETE	EACH	2.00
XX008282	LIGHT POLE FOUNDATION METAL 8" x 8 FT, 10" BOLT CIRCLE	EACH	37.00
XX008283	POLYETHYLENE DUCT BORED AND PULLED, 1 1/4" DIA WITH ELECTRIC CABLE 600 V (XHHW-2), 5-1/C NO. 6 AND 1-1/C NO. 6 GROUND	FOOT	3,500.00
XX008284	ORNAMENTAL LIGHT POLE, ALUMINUM WITH CONTEMPORARY ARM	EACH	37.00
XX008285	LUMINAIRE, BELL SHAPE SHADE, METAL HALIDE, PENDENT MOUNT	EACH	37.00

* DENOTE SPECIALTY ITEMS

GENERAL NOTES

- THE EXISTING LIGHTING SYSTEM WITH CONTROLLER IS OWNED AND MAINTAINED BY THE THE CITY OF BRAIDWOOD THE EXISTING LIGHTING SYSTEM SHALL REMAIN OPERATIONAL THROUGHOUT THE PROJECT AT ALL TIMES BETWEEN DUSK TO DAWN OR AS DIRECTED BY THE ENGINEER. NO LIGHTING CIRCUIT OR PORTION THEREOF SHALL BE REMOVED WITHOUT THE APPROVAL OF THE ENGINEER.
- BEFORE PERFORMING ANY EXCAVATION, REMOVAL OR INSTALLATION WORK AT THE PROJECT SITE, THE CONTRACTOR SHALL NOTIFY THE FIELD ENGINEER CITY OF BRAIDWOOD AND REQUEST FOR PRECONSTRUCTION INSPECTION FOR THE MAINTAINED LIGHTING/ELECTRICAL EQUIPMENT. THE REQUEST FOR THE PRECONSTRUCTION INSPECTION SHALL BE MADE NOT LESS THAN SEVEN (7) CALENDER DAYS PRIOR TO THE DESIRED INSPECTION DATE.
- THE CONTRACTOR SHALL CONDUCT WITH THE CITY OF BRAIDWOOD AN INVENTORY OF THE EXISTING LIGHTING/ELECTRICAL EQUIPMENTS, WHICH WILL BE AFFECTED BY THE IMPROVEMENT. THIS INVENTORY RECORD SHALL BE IN WRITING AND SIGNED BY ALL PARTIES. THE CONTRACTOR SHALL SUBMIT RECORD COPY TO CITY OF BRAIDWOOD.
- AT THE CONTRACTOR'S REQUEST, THE CITY OF BRAIDWOOD SHALL MARK AND/OR STAKE (ONLY ONCE PER LOCATION), WITHIN PROJECT LIMITS, ALL UNDERGROUND CABLE ROUTES OWNED AND MAINTAINED BY THE CITY, SEVEN (7) DAYS ADVANCE NOTICE IS REQUIRED BY THE CITY OF BRAIDWOOD.
- THE PROPOSED LIGHTING IMPROVEMENT SHALL BE COORDINATED WITH THE ENGINEER. THE CONTRACTOR SHALL GIVE IN WRITING TO THE ENGINEER FOR REVIEW, CONSTRUCTION STAGING FOR THE PROPOSED ROADWAY LIGHTING IMPROVEMENT AND THE CONTRACTOR SHALL OBTAIN WRITTEN APPROVAL FROM THE ENGINEER. THE CONTRACTOR SHALL MAINTAIN THE EXISTING LIGHTING SYSTEM AS DESCRIBED IN PAY ITEM- " MAINTANANCE OF LIGHTING SYSTEM"
- BELOW GROUND SPlicing OF THE UNIT DUCT AND CIRCUIT CABLES WILL NOT BE PERMITTED.
- WHERE SEPARATE CIRCUIT RUNS ARE TO BE INSTALLED PARALLEL WITH EACH OTHER, ONE COMMON TRENCH SHALL BE USED AND SHALL BE MEASURED ONLY ONCE FOR PAYMENT, AS TRENCH AND BACKFILL FOR ELECTRICAL WORK.
- IT SHALL BE THE CONTRACTOR'S RESPONSIBILITY TO MARK THE PROPOSED LOCATIONS OF LIGHTING SYSTEM PER SECTION 801.09 OF THE STANDARD SPECIFICATIONS FOR THE ENGINEER'S INSPECTION AND APPROVAL. THE EXACT LOCATIONS OF ALL OTHER ROADWAY LIGHTING ITEMS, INCLUDING THE THE LIGHTING CONTROLLER(S), SHALL BE CONFIRMED WITH THE ENGINEER PRIOR TO STARTING WORK.
- THE RESPONSIBILITY FOR COORDINATING FINISHED GRADE ELEVATION WITH THE TOP OF THE FOUNDATION HEIGHTS SHALL BE WITH THE CONTRACTOR.
- THE CONTRACTOR SHALL SUBMIT PER SECTION 801.05 OF THE STANDARD SPECIFICATIONS FOR THE ENGINEER APPROVAL, WITHIN 30 DAYS AFTER CONTRACT EXECUTION, EIGHT (8) COPIES OF APPROVABLE MANUFACTURER'S PRODUCT DATA AND DETAIL SHOP DRAWINGS
 - TRENCH: ELECTRICAL WARNING TAPE
 - FOUNDATION:
 - OFFSET FOUNDATION: CLASS "SI" CONCRETE, REINFORCEMENT, PVC RACEWAYS, ANCHOR BOLTS WITH NUTS & WASHERS.
 - FOUNDATION METAL: FABRICATION, STUD BOLTS, NUTS AND WASHERS
 - CONDUIT: CONDUIT AND CONDUIT FITTINGS.
 - GROUND ROD: GROUND ROD, COPPER WIRE, EXOTHERMIC WELD.
 - UNIT DUCT/CABLES: UNIT DUCT, CABLES
 - ELECTRIC CABLES: ELECTRIC CABLES
 - LIGHT POLE/ARM: POLE DETAILS, SHOP DRAWING, & WIND LOAD CALCULATIONS, POLE WIRE
 - LUMINAIRE: ROADWAY BALLAST ASSEMBLY, PHOTOMETRY FILE & LIGHTING LEVEL CALCULATIONS
 - ELECTRICAL ITEMS: ELECTRIC TAPES, QUICK DISCONNECT WITH FUSE, LAMPS.
- ALL ELECTRIC CABLE CIRCUIT SHALL BE FULLY PIGMENTED COLOR CODED AND TAGGED AS SHOWN ON THE DRAWINGS.
 - RED/BLACK - LIGHTING CIRCUIT (LINE TO LINE)
 - WHITE - YELLOW/BLUE - FESTOON CIRCUIT (LINE TO NEUTRAL)
 - GREEN-GROUND
- THE CONTRACTOR SHALL SUBMIT FOUR (4) SETS, OF RECORD DRAWINGS FULL SIZE COMPLETE, NEAT AND ACCURATE TO THE ENGINEER FOR REVIEW AND COMMENT, AS SPECIFIED PER SECTION 801.16 OF THE STANDARD SPECIFICATIONS. THE "RECORD DRAWINGS" SHALL BE UPDATED ON A REGULAR BASIS AND DEPICT ALL ROADWAY LIGHTING MATERIAL INSTALLATIONS WITH ANY CHANGES INDICATED IN RED. "RECORD DRAWINGS" SHALL BE SUBMITTED AT LEAST 7 DAYS BEFORE SCHEDULING A FINAL INSPECTION.
- THE CONTRACTOR SHALL NOTIFY J.U.L.I.E. AT (1-800-892-0123) TO LOCATE AND MARK/STAKE ALL UNDERGROUND UTILITIES.
- THE LIGHT POLE SETBACK VARIES FROM THE BACK OF CURB TO THE FACE OF FOUNDATION. THE CONTRACTOR SHALL VERIFY IN FIELD WITH THE ENGINEER.
- RESTORATION OF PARKWAY AND PROJECT SITE SHALL BE INCIDENTAL TO CONTRACT IN ACCORDANCE WITH ALL APPLICABLE CODES AND REGULATIONS, AND THE STANDARD SPECIFICATIONS.
- THE CONTRACTOR SHALL COMPLY WITH ALL LATEST LOCAL CODES AND ORDINANCES.
- THE PROPOSED TRENCH SHALL BE (30 INCH) BELOW FINISHED GRADE, PER SECTION 819 OF THE STANDARD SPECIFICATIONS.
- ALL ELECTRICAL EQUIPMENT AND PRODUCT SHALL BE UL LISTED AND LABELED
- POLE FUSES, FUSE HOLDERS AND ASSOCIATED HARDWARE/MATERIAL AND INSTALLATION SHALL BE INCLUDED IN THE LUMINAIRE PAY ITEM
- THE ENGINEER WILL NOT AUTHORIZE PARTIAL ACCEPTANCE OF THE PROJECT. FINAL INSPECTION AND ACCEPTANCE OF THE PROJECT WILL ONLY BE PERMITTED PER SECTION 801.15 OF THE STANDARD SPECIFICATIONS.
- THE ENGINEER SHALL CONTACT THE TRAFFIC CONTROL SUPERVISOR AT 847-705-4470, MINIMUM OF 72 HOURS PRIOR TO THE PLACEMENT OF ANY TEMPORARY TRAFFIC CONTROL DEVICES.

LEGEND

- EXISTING LIGHTING UNIT TO BE REMOVED, AND SALVAGE, BY OTHERS. (WOOD POLE WITH MAST ARM AND LUMINAIRE)
- A/C-E(R)-- EXISTING AERIAL CABLE TO BE REMOVED, BY OTHERS
- EXISTING LIGHTING POLE, REMAIN IN PLACE MAINTAINED BY THE CITY OF BRAIDWOOD 47.5' MH, 12' M.A. 310 W. HPS LAMP.
- EXISTING WOOD POLE, TO BE REMOVED AND SALVAGE, BY OTHERS
- LIGHTING FOUNDATION TO BE REMOVED
- EXISTING UTILITY SERVICE, POLE
- ELECTRIC SERVICE CABLE IN CONDUIT 600 V (XLP-TYPE USE), 3-1/c NO. 3/0 2 1/2" DIA CONDUIT
- LIGHTING CONTROLLER SPECIAL 200 AMPERE, 120/240 VOLT, 1 PHASE, 3 WIRE
- GROUND ROD, 5/8" DIA. x 10 FT
- PROPOSED ORNAMENTAL LIGHTING UNIT, ALUMINUM, 18 FT FLUTED POST WITH 16" DIA CAST ALUMINUM BASE, 10 DIA BOLT CIRCLE. POST TOP MOUNTED CONTEMPORARY ALUMINUM ARM 30", DUPLEX RECEPTACLE IN NEMA 3R HOUSING AND PROVISION FOR ONE PAIR OF BANNER ARM. POLE AND ARM PAINTED IN BLACK. LUMINAIRE, PENDENT MOUNT BELL SHAPE SHADE ALUMINUM HOUSING, FLAT TEMPERED GLASS LENS. 70 WATT CLEAR METAL HALIDE LAMP. MULTITAP BALLAST. REACTOR TYPE (HIGH POWER FACTOR LAG) 240 VOLT (LINE TO LINE) LUMINAIRE PAINTED IN BLACK
- FESTOON OUTLET DUPLEX 20 AMP, 120 VOLT, GFCI.
- T-TRENCH, P-PUSHED
- PVC CONDUIT
- D-DIAMETER AND L-LENGTH
- STA X+XX STATION FOR LIGHTING UNIT
- A 1 - F 1 (B) PHASE WIRE COLOR
- FESTOON OUTLET NUMBER IN CIRCUIT
- FESTOON CIRCUIT BREAKER IDENTIFICATION
- POLE NUMBER IN CIRCUIT
- BRANCH CIRCUIT BREAKER IDENTIFICATION
- PROPOSED POLYETHYLENE DUCT BORED AND PULLED, 1 1/4" DIA WITH ELECTRIC CABLE, 600 V (XHHW-2), 5-1/C NO. 6 & 1-1/C NO. 6 GROUND FULLY PIGMENTED COLOR CODED CABLE
 - B-BLACK } LIGHTING CIRCUIT (LINE TO LINE)
 - R-RED } LIGHTING CIRCUIT (LINE TO LINE)
 - C-GREEN (GROUND)
 - W-WHITE - (NEUTRAL)
 - Y-YELLOW - (NEUTRAL)
 - BL-BLUE } FESTOON CIRCUIT (LINE TO NEUTRAL)

NOTE:

- THE MATERIALS AND WORK FOR THIS PROJECT SHALL CONFORM TO THE LATEST N.E.C. AND APPLICABLE STANDARD SPECIFICATIONS AND SUPPLEMENTAL SPECIFICATIONS AND RECURRING SPECIAL PROVISIONS ADOPTED IN 2008 BY THE ILLINOIS DEPARTMENT OF TRANSPORTATION.

CAUTION

"THE CONTRACTOR SHALL VERIFY THAT THERE ARE NO CONFLICTS BETWEEN THE PROPOSED LIGHT POLE FOUNDATION LOCATIONS AND EXISTING UTILITIES, PROPOSED UTILITIES, EXISTING DRIVEWAYS, AND PROPOSED DRIVEWAYS. IF A CONFLICT IS FOUND, THE CONTRACTOR SHALL IMMEDIATELY INFORM THE ENGINEER IN WRITING. IN THE EVENT OF A CONFLICT, THE CONTRACTOR SHALL OBTAIN WRITTEN INSTRUCTIONS FROM THE ENGINEER PRIOR TO PROCEEDING WITH ANY PART OF THE WORK AFFECTED BY THE CONFLICT. FAILING TO SECURE SUCH INSTRUCTIONS, THE CONTRACTOR WILL BE CONSIDERED TO HAVE PROCEEDED AT HIS OWN RISK AND EXPENSE."

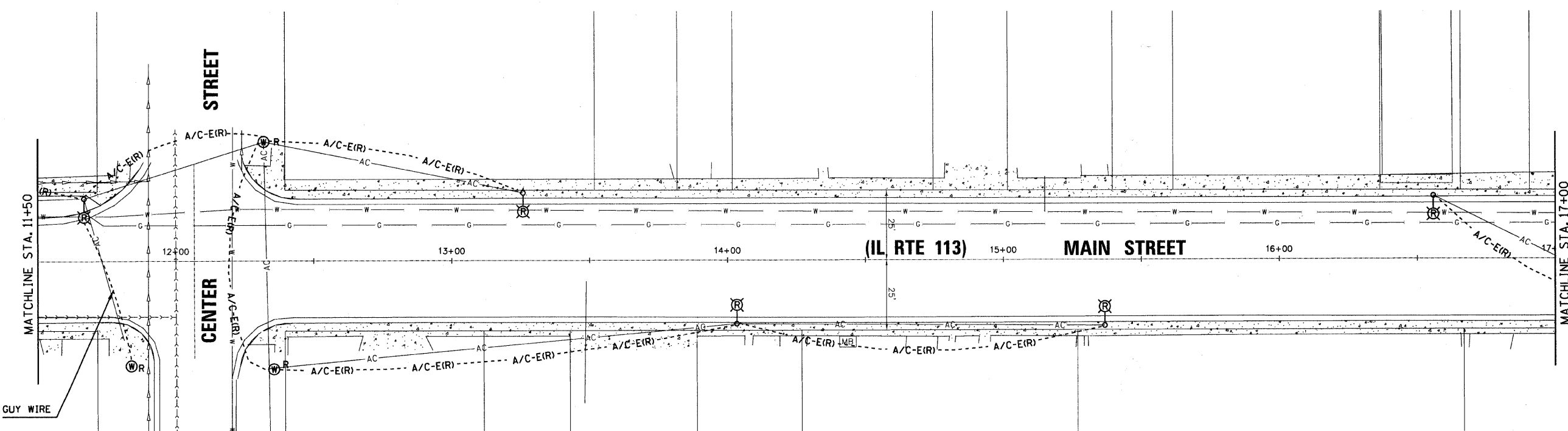
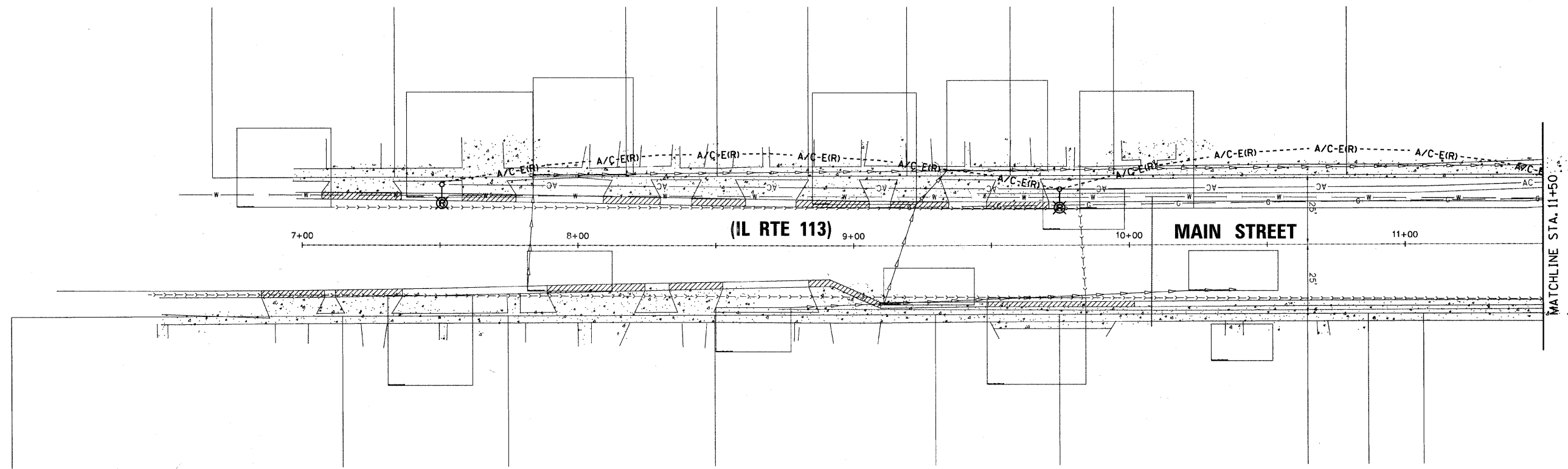


REVISIONS	
NAME	DATE

ILLINOIS DEPARTMENT OF TRANSPORTATION
CITY OF BRAIDWOOD, WILL COUNTY
ILLINOIS ROUTE 113 (MAIN STREET)
ORNAMENTAL LIGHTING IMPROVEMENT
**SUMMARY OF QUANTITIES,
GENERAL NOTES AND LEGEND**

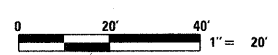
SCALE: _____
DATE: 10-15-09

DRAWN BY: HKQ
CHECKED BY: JS



NOTES:

1. THE CITY OF BRAIDWOOD WILL MAINTAIN THE EXISTING LIGHTING SYSTEM DURING ORNAMENTAL LIGHTING INSTALLATION.
2. THE CITY OF BRAIDWOOD WILL REMOVE THE EXISTING LIGHTING SYSTEM AFTER THE ORNAMENTAL LIGHTING INSTALLATION AND REVIEWED.



REVISED 11-22-09

Sunjoy Inc.
Area Lighting
Consulting Engineers
212 TIMBERCREST DRIVE
SCHAUMBURG, ILLINOIS
60193-1572

REVISIONS	
NAME	DATE

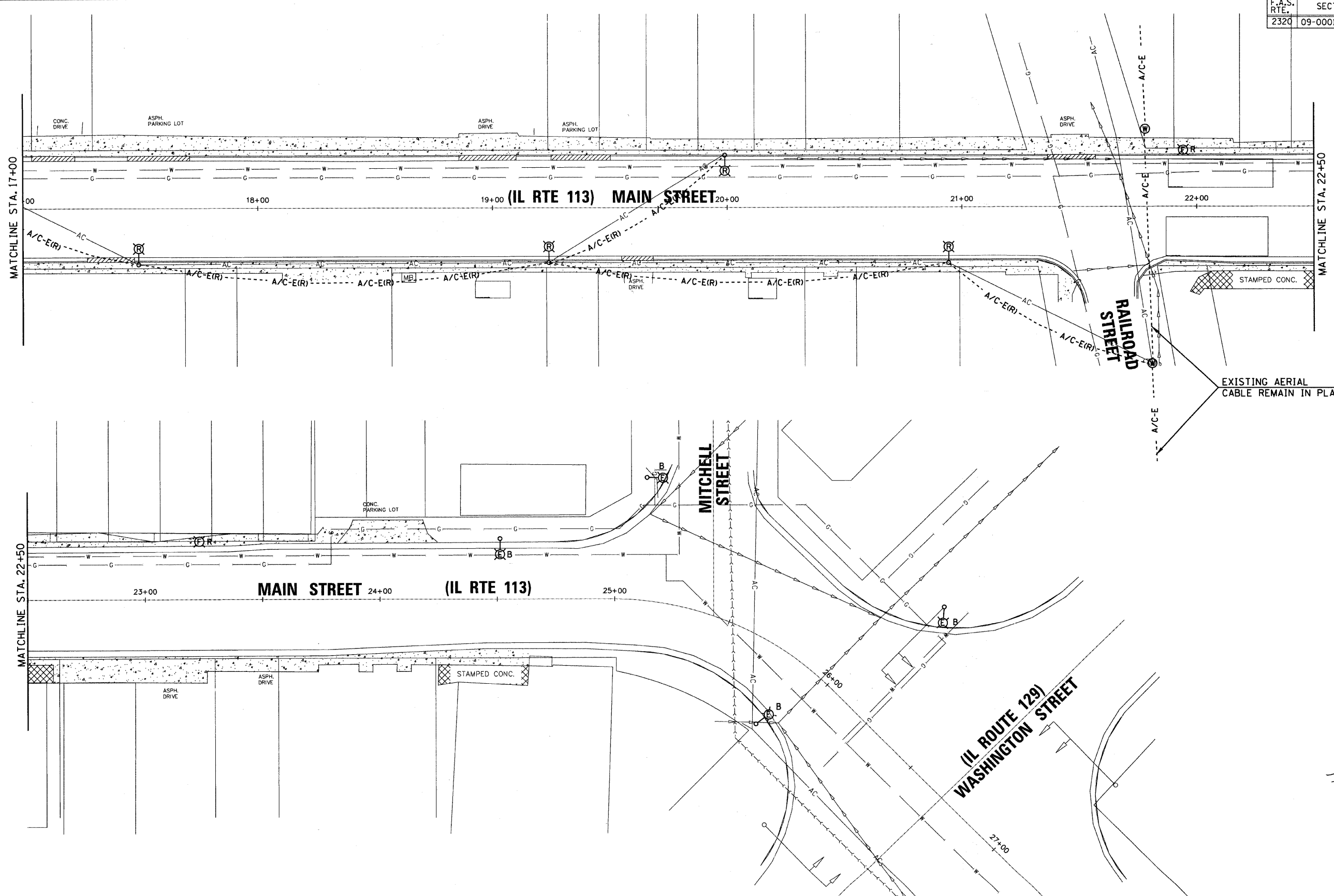
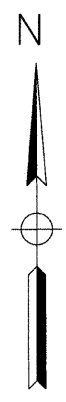
ILLINOIS DEPARTMENT OF TRANSPORTATION
CITY OF BRAIDWOOD, WILL COUNTY
ILLINOIS ROUTE 113 (MAIN STREET)
ORNAMENTAL LIGHTING IMPROVEMENT

EXISTING LIGHTING TO BE MAINTAIN & REMOVE (BY OTHERS)

SCALE: 1" = 20'
DATE: 10-15-09

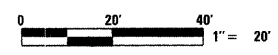
DRAWN BY: HKQ
CHECKED BY: JS

SDATES \$FILES \$



NOTES:

1. THE CITY OF BRAIDWOOD WILL MAINTAIN THE EXISTING LIGHTING SYSTEM DURING ORNAMENTAL LIGHTING INSTALLATION.
2. THE CITY OF BRAIDWOOD WILL REMOVE THE EXISTING LIGHTING SYSTEM AFTER THE ORNAMENTAL LIGHTING INSTALLATION AND REVIEWED.



REVISED 11-22-09

Sunjoy Inc.
Area Lighting
Consulting Engineers
212 TIMBERCREST DRIVE
SCHALMBURG, ILLINOIS
60193-1572

REVISIONS	
NAME	DATE

ILLINOIS DEPARTMENT OF TRANSPORTATION
CITY OF BRAIDWOOD, WILL COUNTY
ILLINOIS ROUTE 113 (MAIN STREET)
ORNAMENTAL LIGHTING IMPROVEMENT
**EXISTING LIGHTING TO BE
MAINTAIN & REMOVE (BY OTHERS)**

SCALE: 1" = 20'
DATE: 10-15-09

DRAWN BY: HKQ
CHECKED BY: JS



SFILES
SDATES

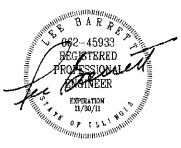
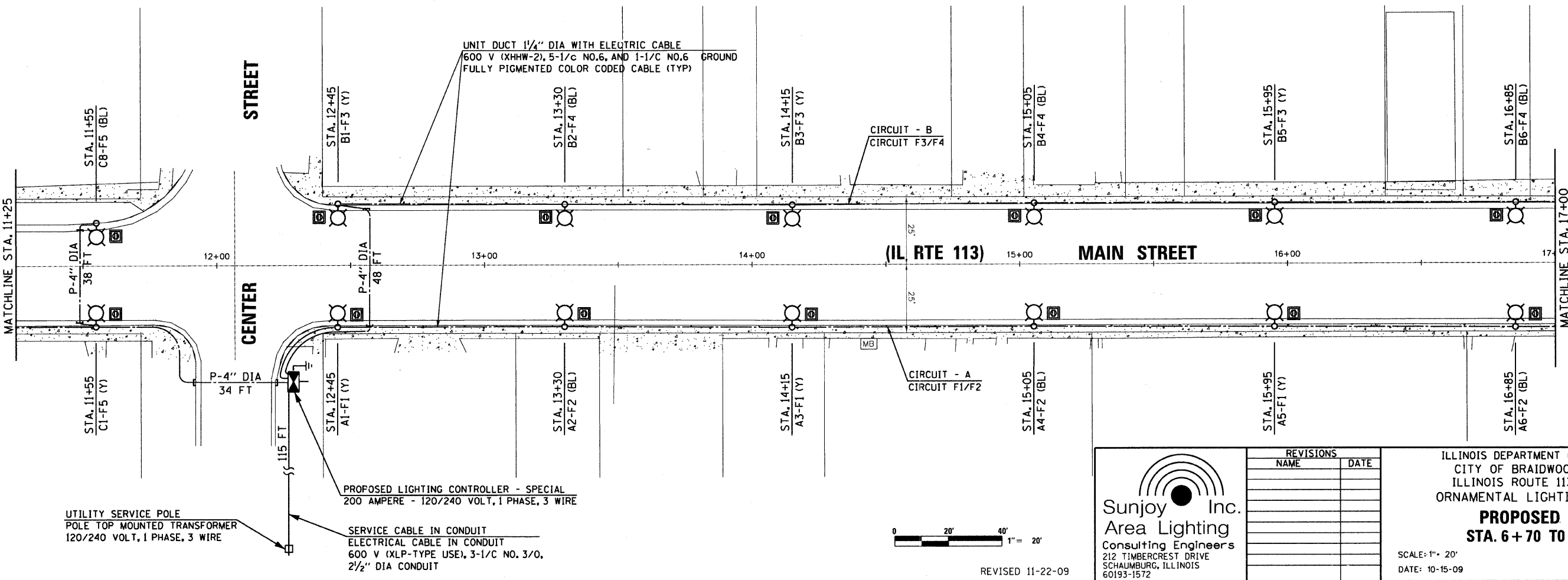
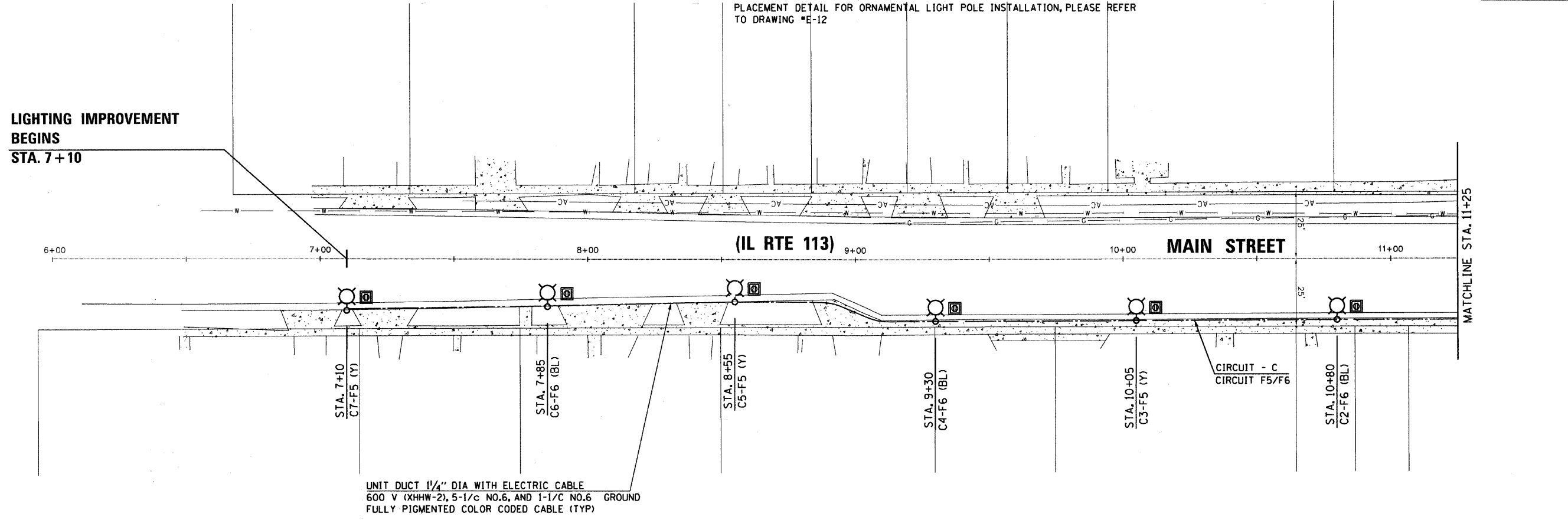
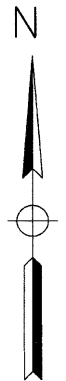
F.A.S. RTE.	SECTION	COUNTY	TOTAL SHEETS	SHEET NO.
2320	09-00012-00-LT	WILL	12	5

CONTRACT NO. 63433

NOTE:

SAW CUTS, SIDEWALK REMOVAL AND PORTLAND CEMENT CONCRETE SIDEWALK-5" PLACEMENT DETAIL FOR ORNAMENTAL LIGHT POLE INSTALLATION, PLEASE REFER TO DRAWING *E-12

LIGHTING IMPROVEMENT BEGINS STA. 7+10

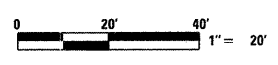


REVISIONS	
NAME	DATE

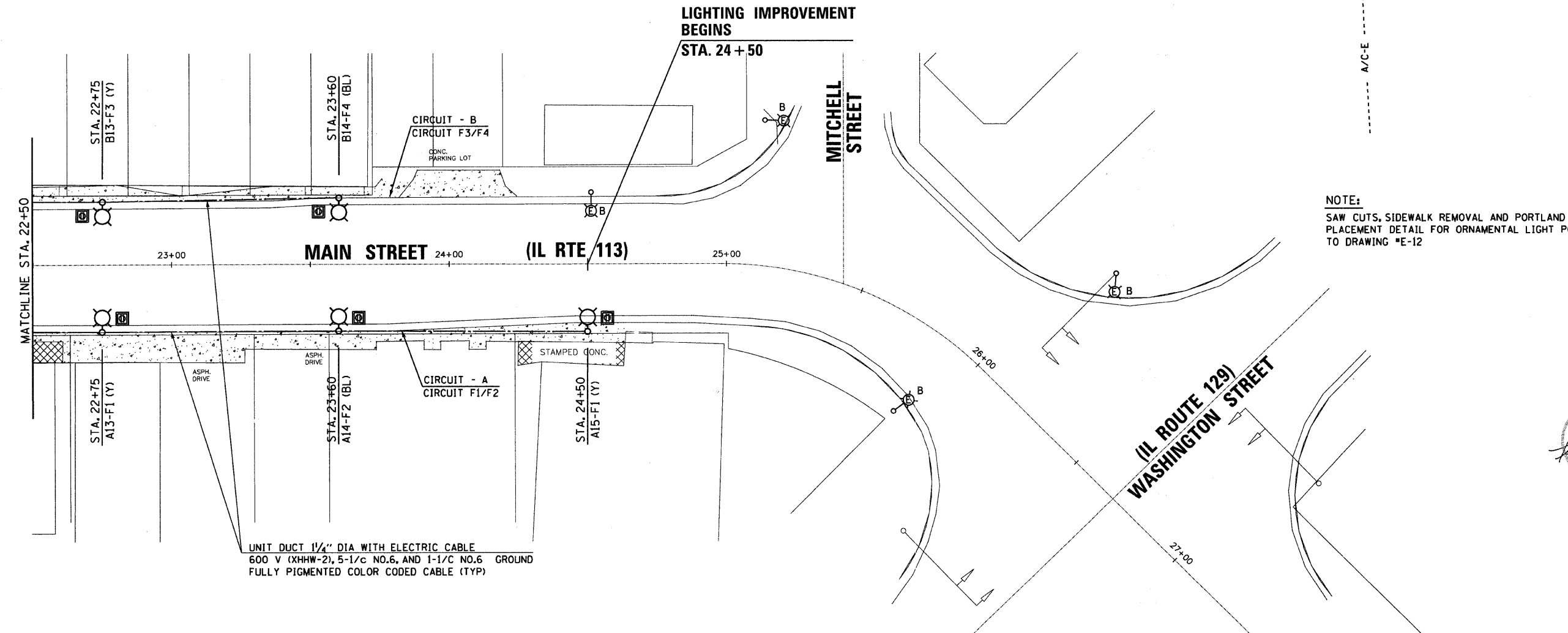
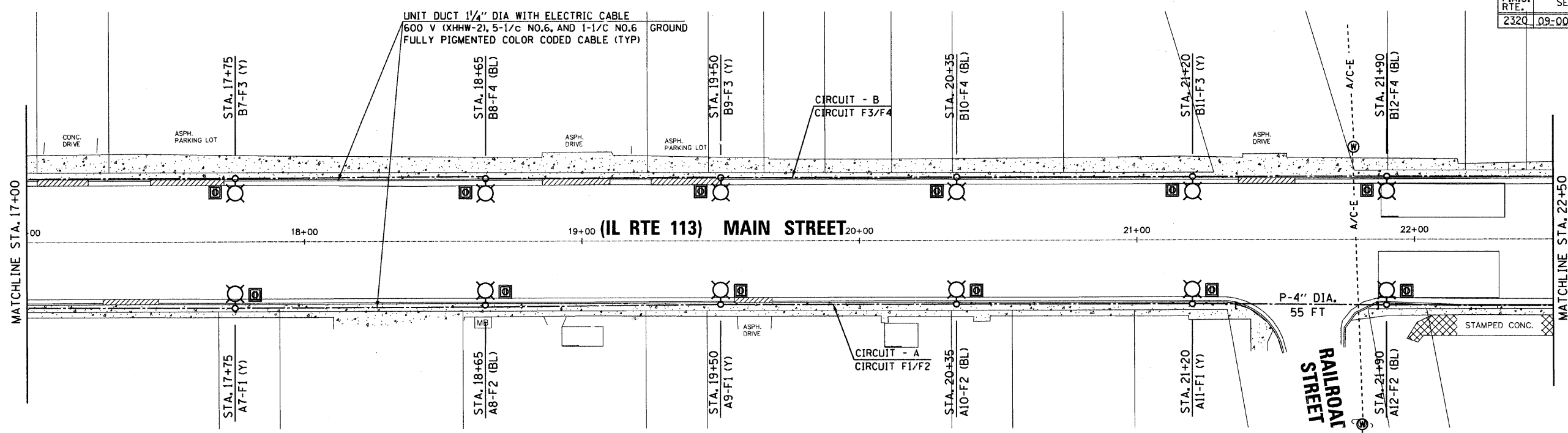
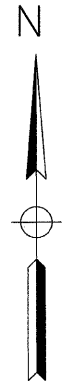
ILLINOIS DEPARTMENT OF TRANSPORTATION
 CITY OF BRAIDWOOD, WILL COUNTY
 ILLINOIS ROUTE 113 (MAIN STREET)
 ORNAMENTAL LIGHTING IMPROVEMENT
PROPOSED LIGHTING
STA. 6+70 TO STA. 17+00

SCALE: 1" = 20'
 DATE: 10-15-09

DRAWN BY HKO
 CHECKED BY JS



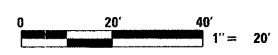
REVISED 11-22-09



NOTE:
 SAW CUTS, SIDEWALK REMOVAL AND PORTLAND CEMENT CONCRETE SIDEWALK-5" PLACEMENT DETAIL FOR ORNAMENTAL LIGHT POLE INSTALLATION, PLEASE REFER TO DRAWING *E-12



\$FILES \$
 \$DATES \$



REVISED 11-22-09

Sunjoy Inc.
 Area Lighting
 Consulting Engineers
 212 TIMBERCREST DRIVE
 SCHAMBURG, ILLINOIS
 60193-1572

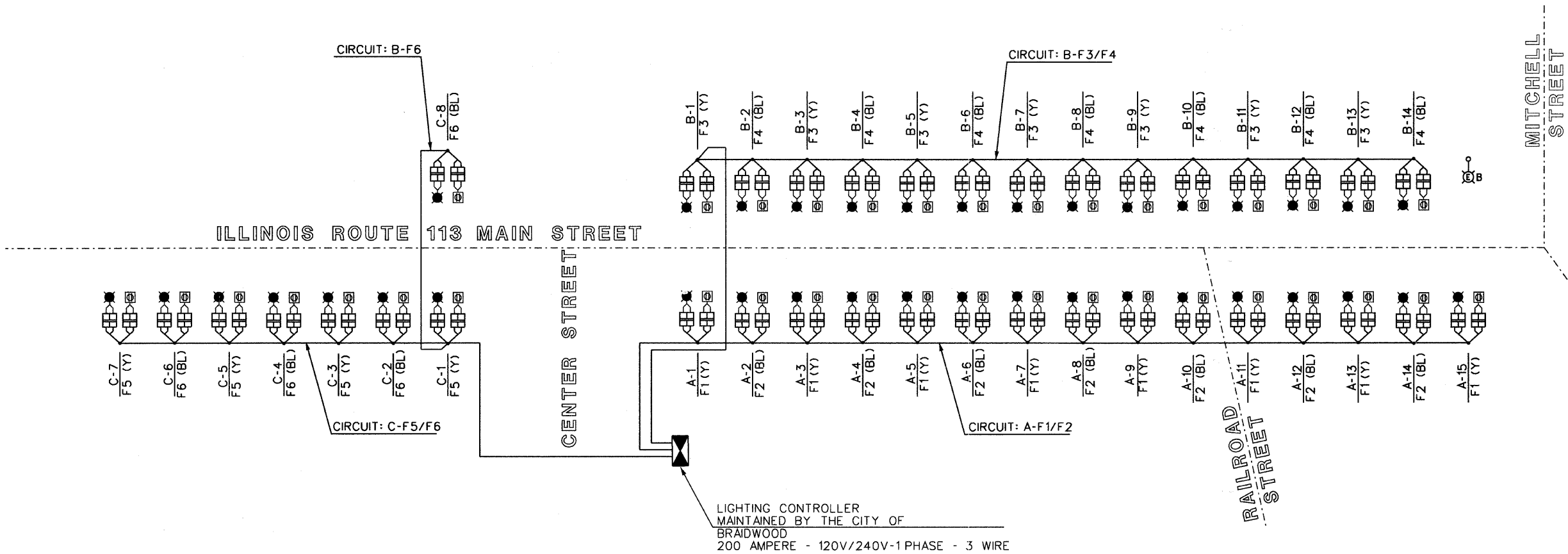
REVISIONS	
NAME	DATE

ILLINOIS DEPARTMENT OF TRANSPORTATION
 CITY OF BRAIDWOOD, WILL COUNTY
 ILLINOIS ROUTE 113 (MAIN STREET)
 ORNAMENTAL LIGHTING IMPROVEMENT

PROPOSED LIGHTING
STA. 17 + 00 TO STA. 24 + 50

SCALE: 1" = 20'
 DATE: 10-15-09

DRAWN BY: HKQ
 CHECKED BY: JS



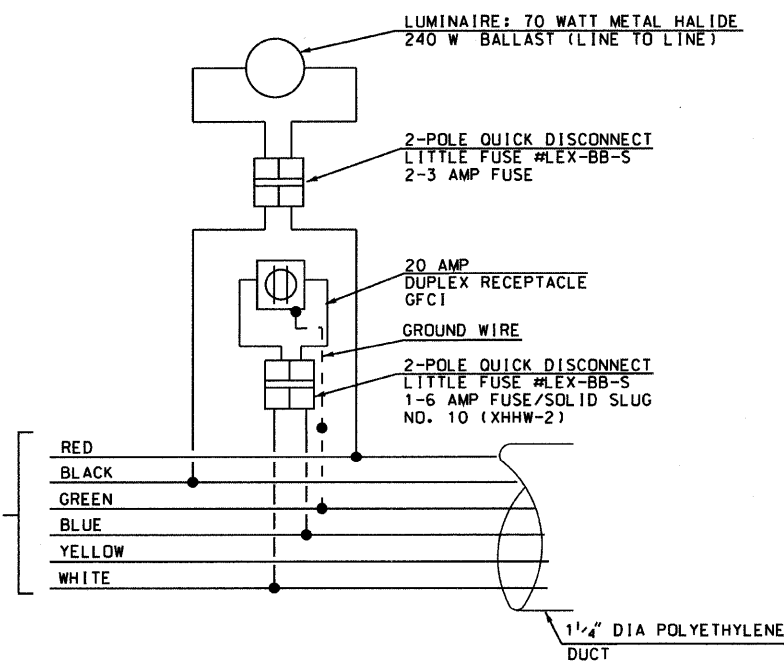
CIRCUIT LOAD

LIGHTING PANEL - 240 V			FESTOON PANEL - 120 V				
CIRCUIT	AMPERE	WATTS	CIRCUIT	AMPERE	WATTS	AMPERE	WATTS
A	6.60	1,425	F1 (Y)	24	2,880		
			F2 (BL)			21	2,520
B	6.16	1,330	F3 (Y)	21	2,520		
			F4 (BL)			21	2,520
C	3.52	760	F5 (Y)	12	1,440		
			F6 (BL)			12	1,440
TOTAL	16.28	3,515	TOTAL	57	6,840	54	6,480

BALLAST, 60 HZ-HX-HPF., MULTI-TAP, +/- 5% VOLTAGE DROP
0.40 AMP @ 240 VOLT, M.H. LAMP
70W. CLEAR M.H. LAMP, 6,300 LUMEN.

SINGLE LINE LEGEND

- LUMINAIRE, 70W MH LAMP
- FESTOON OUTLET
- 2 POLE DISCONNECT WITH FUSE
2-3 AMPERE FUSE, 70 W MH LAMP
1-6 AMPERE FUSE/SOLID SLUG, FESTOON OUTLET
- LIGHTING CONTROL CABINET
200 AMPERE, 120/240 VOLT, 1 PHASE, 3 WIRE
- POLYETHYLENE DUCT WITH CIRCUIT CABLE
- EXISTING LIGHT POLE MAINTAINED BY THE CITY OF BRAIDWOOD, 47.5' MH, 12' MA, 310 W. HPS LAMP



Sunjoy Inc.
Area Lighting
Consulting Engineers
212 TIMBERCREST DRIVE
SCHAUMBURG, ILLINOIS
60193-1572

REVISIONS	
NAME	DATE

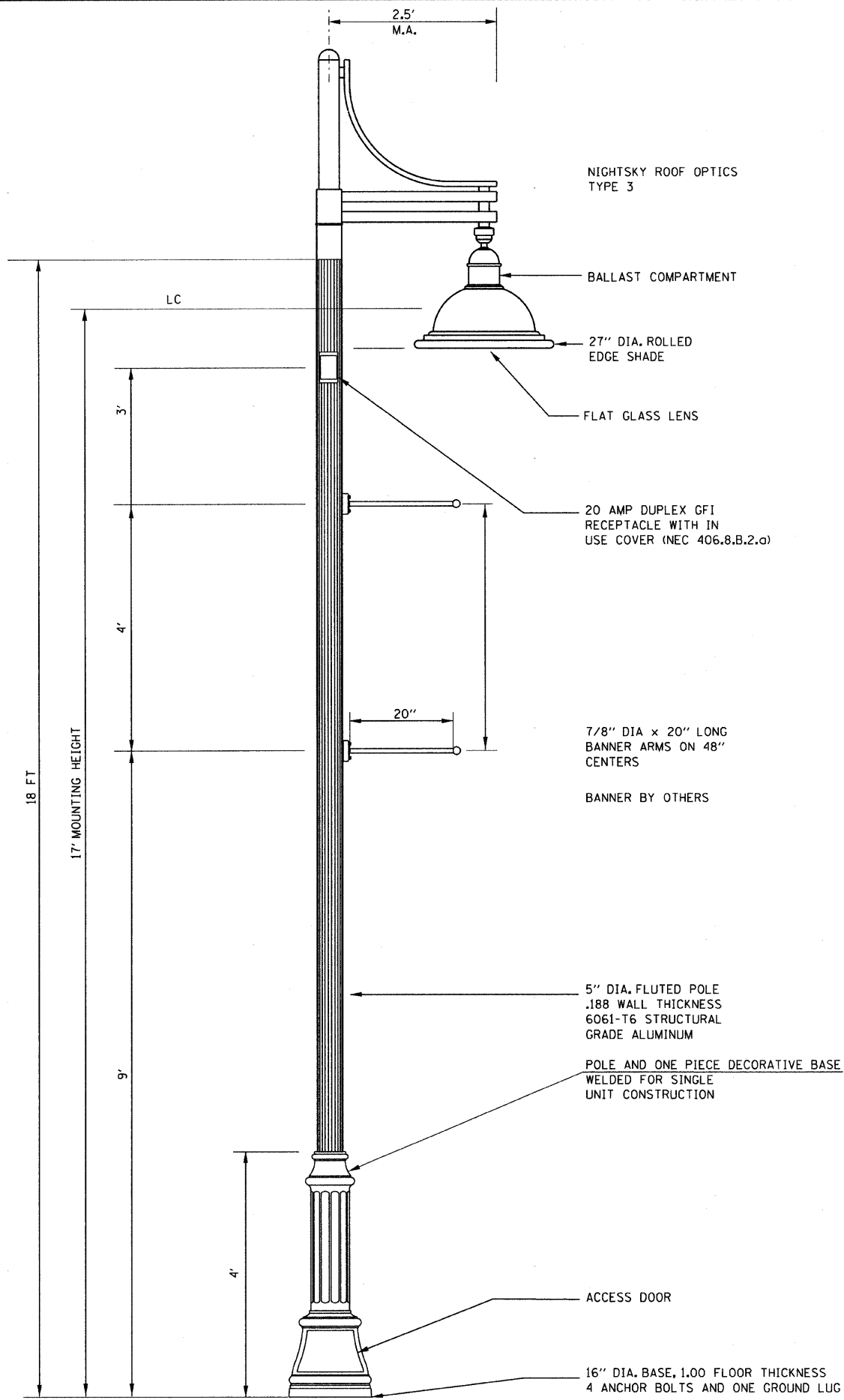
ILLINOIS DEPARTMENT OF TRANSPORTATION
CITY OF BRAIDWOOD, WILL COUNTY
ILLINOIS ROUTE 113 (MAIN STREET)
ORNAMENTAL LIGHTING IMPROVEMENT

ONE LINE CIRCUIT DIAGRAM

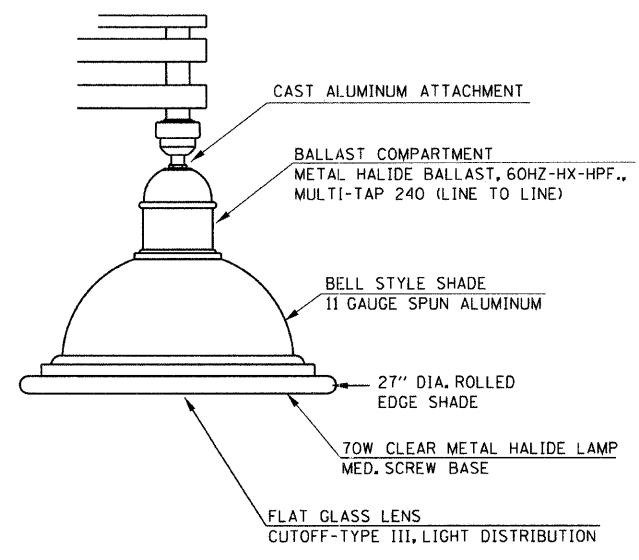
SCALE: NTS
DATE: 10-15-09

DRAWN BY: HKQ
CHECKED BY: JS

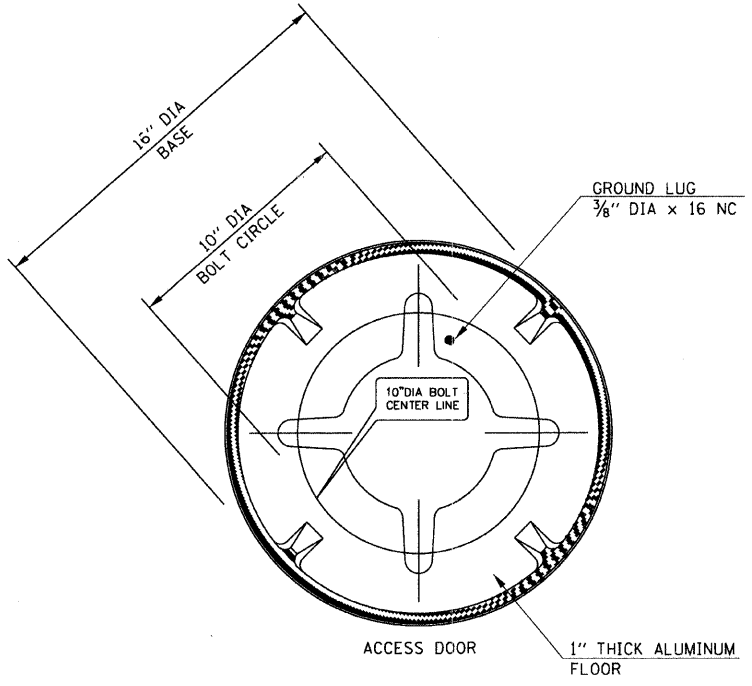
REVISED 11-22-09



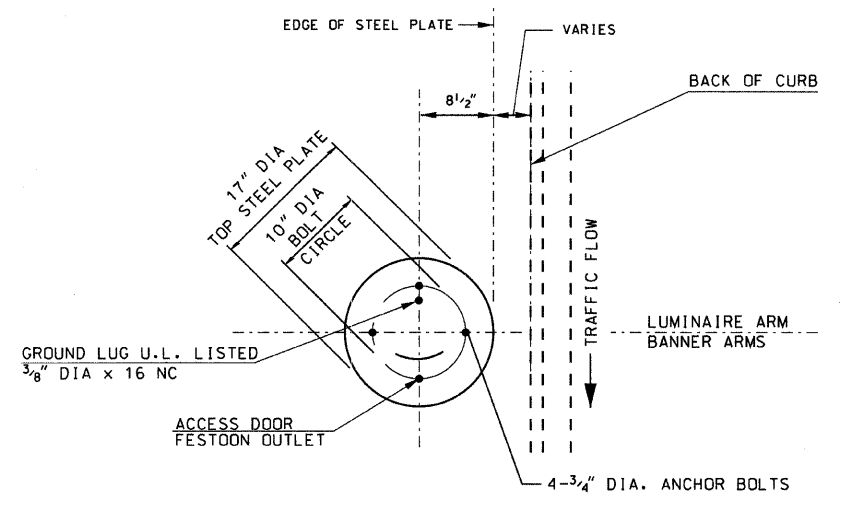
ORNAMENTAL LIGHT POLE, ALUMINUM WITH CONTEMPORARY ARM



LUMINAIRE BELL SHAPE SHADE PENDENT MOUNT



LIGHT POLE BASE DETAILS



POSITION OF ANCHOR BOLTS AND HANDHOLE

NOTES

1. THE LIGHTING UNIT SHALL COMPLY WITH THE ARTICLE 821-ROADWAY LUMINAIRE AND ARTICLE 830-LIGHT POLES OF THE STANDARD SPECIFICATIONS.
2. THE LIGHTING UNIT- THE POLE SHAFT WITH ARM AND LUMINAIRE SHALL BE PAINTED IN BLACK COLOR COAT.
3. ANCHOR BOLT CIRCLE AND BOLT SLOTS IN POLE BASE PLATE, SHALL BE VARIFIED WITH POLE MANUFACTURE.
4. LUMINAIRES ARE TO BE INSTALLED AS SOON AS POSSIBLE AFTER POLE ERECTED PER MANUFACTURER RECOMMENDATIONS. THE POLE WILL NOT BE PAID FOR UNTIL THE LUMINAIRE IS INSTALLED.
5. THE LIGHT POLE SHALL MEET 90 MPH WIND SPEED AASHTO DESIGN CRITERIA. THE CONTRACTOR SHALL FURNISH WIND LOAD CALCULATIONS MEETING AASHTO DESIGN CRITERIA.
6. THE DUCT SHALL EXTEND INTO POLE A MINIMUM OF 304.8 mm (12") ABOVE THE BASE.
7. LIGHT POLE AND LUMINAIRE SHALL BE U.L. LISTED AND LABELED



Sunjoy Inc.
Area Lighting
Consulting Engineers
212 TIMBERCREST DRIVE
SCHAUMBURG, ILLINOIS
60193-1572

REVISIONS	
NAME	DATE

ILLINOIS DEPARTMENT OF TRANSPORTATION
CITY OF BRAIDWOOD, WILL COUNTY
ILLINOIS ROUTE 113 (MAIN STREET)
ORNAMENTAL LIGHTING IMPROVEMENT
ORNAMENTAL LIGHT POLE WITH CONTEMPORARY ARM AND PENDENT MOUNT LUMINAIRE

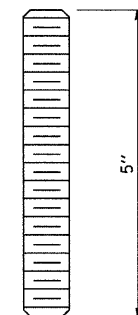
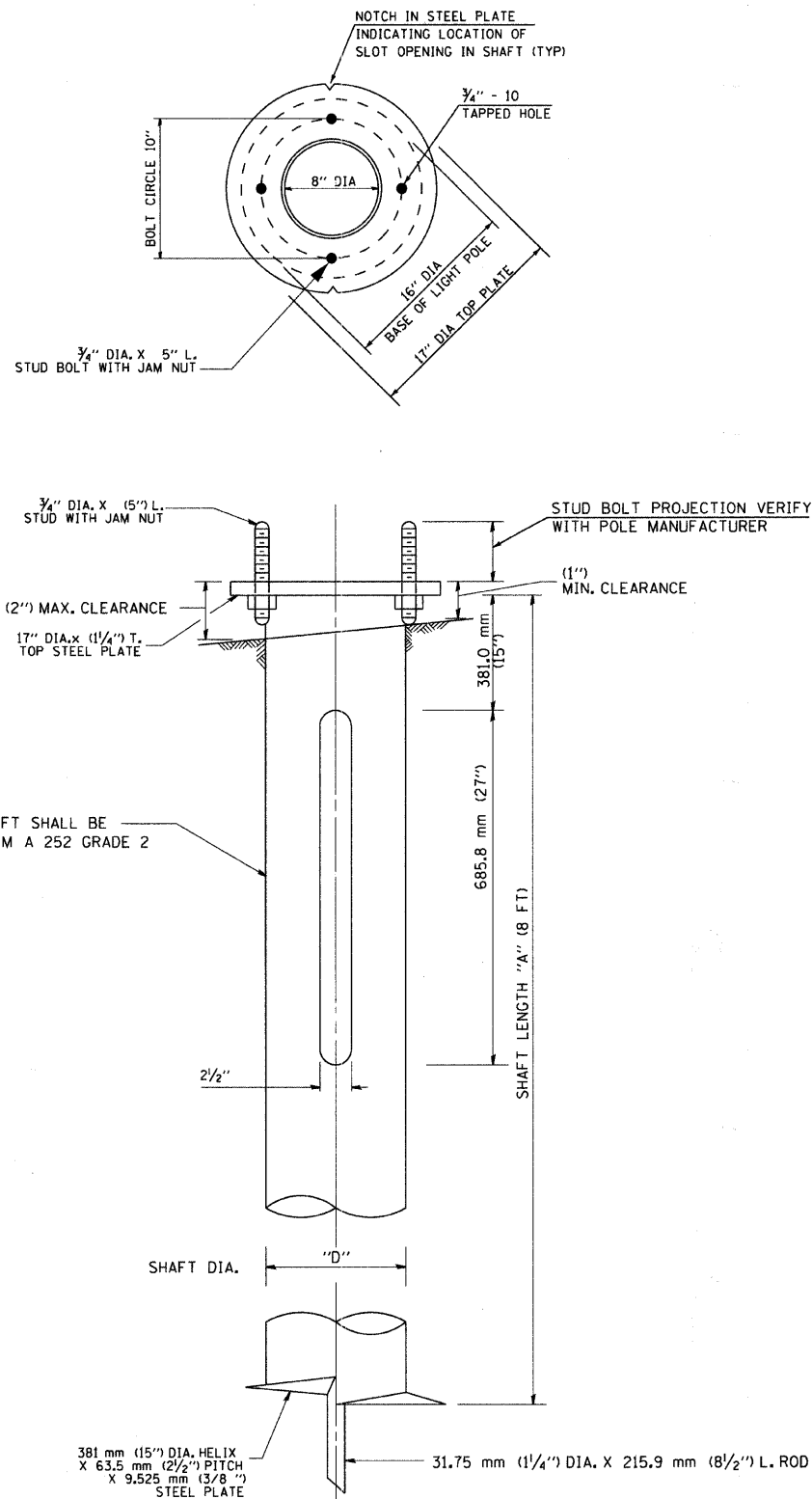
SCALE: NTS
DATE: 10-15-09

DRAWN BY: HKQ
CHECKED BY: JS

REVISED 11-22-09

NOTES:

1. THE HELIX FOUNDATION SHAFT BASE PLATES, HELICAL PLATE, HELIX SCREW, PILOT POINT, AND STOCK BAR SHALL BE ASTM A36 STRUCTURAL STEEL OR BETTER.
2. ALL WELDS SHALL BE CONTINUOUS AND NOT LESS THAN (1/4 ") FILLET WELDS. THE WELDED FOUNDATION SHALL BE CAPABLE OF WITHSTANDING (10,000 FT/LBS) OF INSTALLATION TORQUE APPLIED ABOUT THE AXIS OF THE FOUNDATION.
3. THE ENTIRE HELIX FOUNDATION SHALL BE HOT DIPPED GALVANIZED AFTER FABRICATION IN ACCORDANCE WITH ASTM A123, GRADE B. NO TOUCH-UP WILL BE PERMITTED.
4. FLAT AND LOCK WASHERS SHALL BE OF STEEL. THE STUD BOLTS, NUTS, AND WASHERS SHALL BE HOT DIPPED GALVANIZED IN ACCORDANCE WITH ASTM A153. HEX NUTS SHALL BE IN CONFORMANCE WITH ASTM A563, GRADE DH AND WASHERS SHALL BE IN CONFORMANCE WITH ASTM F436.
5. THE HELIX FOUNDATION SHAFT SHALL BE INSTALLED VERTICAL AND THE BASE PLATE SHALL BE IN LEVEL. THE HARDWARE SHALL NOT BE USED TO ALIGN THE POLE INSTALLATION.
6. THE CABLE TRENCH SHALL BE BACKFILLED AND FIRMLY COMPACTED BEFORE THE INSTALLATION OF THE LIGHT POLE.
7. STUD BOLTS (THREADED STUD) SHALL BE 3/4" DIAMETER AND SHALL COMPLY WITH THE REQUIREMENTS OF ASTM DESIGNATION A687 A F1554 GRADE 105
8. THE CONTRACTOR SHALL COORDINATE EXTENSION OF STUD BOLTS ABOVE TOP OF STEEL PLATE WITH THE LIGHT POLE MANUFACTURER'S REQUIREMENTS.
9. ANY VOIDS WITHIN THE METAL FOUNDATION SHALL BE FILLED WITH FINE AGGREGATE. THE FINE AGGREGATE SHALL COMPLY WITH THE STANDARD SPECIFICATIONS, ARTICLE 1003.04 (C) . COST AND LABOR FOR FURNISHING AND FILLING VOID OF THE METAL FOUNDATION SHALL BE INCLUDED IN THE PAY ITEM "LIGHT POLE FOUNDATION, METAL".
10. WIRING SLOTS SHALL BE ORIENTED PARALLEL TO THE CONCRETE CURB.
11. METAL FOUNDATION THAT ARE NOT INSTALLED TO FULL INSTALLATION DEPTH OR DO NOT ACHIEVE THE MINIMUM INSTALLATION TORQUE SHALL BE REMOVED AND REPLACED WITH THE CONCRETE FOUNDATION WITHOUT ANY ADDITIONAL COST.
12. THE METAL FOUNDATION SHALL NOT BE INSTALLED TO A TORQUE WHICH EXCEEDS MANUFACTURER'S MAXIMUM TORQUE RATING NOR SHALL IT BE INSTALLED TO AN INSTALLATION TORQUE VALUE OF LESS THAN 3,500 FT LB. METAL FOUNDATIONS THAT ARE NOT INSTALLED TO FULL INSTALLATION DEPTH OR DO NOT ACHIEVE THE MINIMUM INSTALLATION TORQUE SHALL BE REMOVE AND REPLACED WITH A CONCRETE FOUNDATION AT NO ADDITIONAL COST.



**3/4" DIA. 10UNC
THREADED STUD BOLT
(LIGHT POLE FOUNDATION)**

HELIX FOUNDATION SIZE

POLE MOUNTING HEIGHT	BOLT CIRCLE "d"	SHAFT LENGTH "A"		SHAFT DIA. "D"
		ON FLAT GROUND	ON 2:1 OR STEEP SLOPE	
14.478 m (47'-1/2 FT.)	381.0 m (15")	3.048 m (10'-0")	3.048 m (10'-0")	254.0 mm (10")

LIGHT POLE FOUNDATION METAL, DETAILS

DETAILS FROM J.H. BOTTS 815-726-5885

Sunjoy Inc.
Area Lighting
Consulting Engineers
212 TIMBERCREST DRIVE
SCHAUMBURG, ILLINOIS
60193-1572

REVISIONS	
NAME	DATE

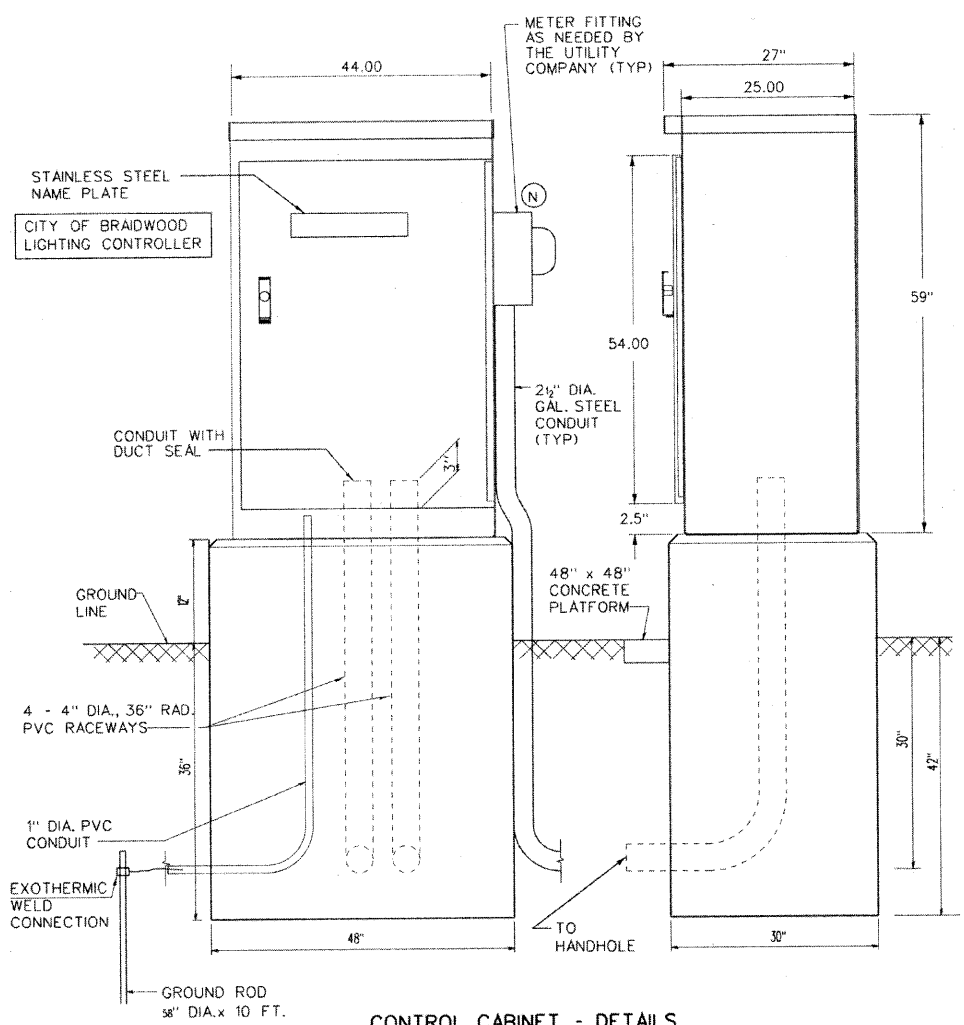
ILLINOIS DEPARTMENT OF TRANSPORTATION
CITY OF BRAIDWOOD, WILL COUNTY
ILLINOIS ROUTE 113 (MAIN STREET)
ORNAMENTAL LIGHTING IMPROVEMENT
**LIGHT POLE FOUNDATION, METAL
10" BOLT CIRCLE, 8" x 8 FT**

SCALE: NONE
DATE: 10-15-09

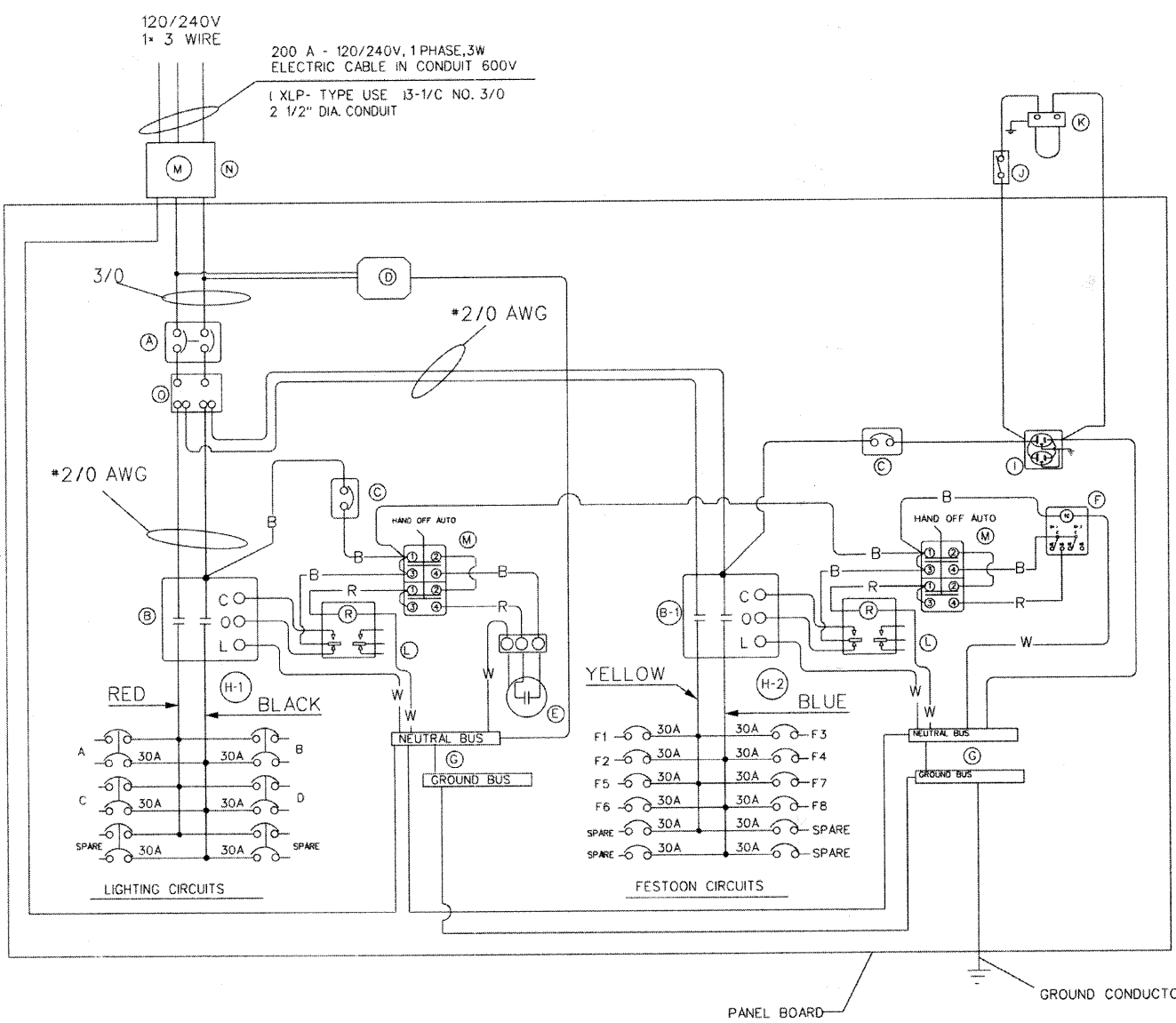
DRAWN BY HKQ
CHECKED BY JS

REVISED 11-22-09

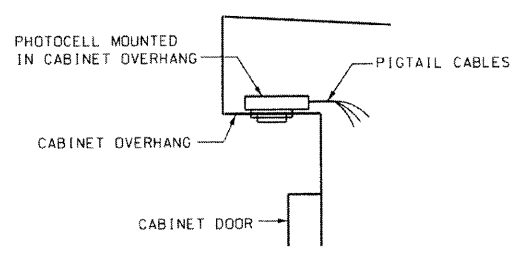
SFILES
SDATES



CONTROL CABINET - DETAILS



ONE LINE CIRCUIT DIAGRAM
200 AMPERE - 120/240 VOLT, SINGLE PHASE, 3 WIRE



PHOTOCELL IN CABINET OVERHANG DETAIL
NOT TO SCALE

DEVICE SCHEDULE		
ITEM	QTY	DESCRIPTION
A	1	CIRCUIT BREAKER, MOLDED CASE, THERMAL MAGNETIC, 2-POLE, 600V, A.C. 225A FRAME, 200A, NON-INTERCHANGEABLE TRIP. BOLT-ON TYPE. INTERRUPTING CAPACITY OF NOT LESS THAN 65,000 RMS SYMMETRICAL AMPERES AT 240V.
B	2	LIGHTING CONTACTOR (REMOTE CONTROL SWITCH) MECHANICALLY HELD, SQ.D. PB. MOUNTED ON SUB PANEL 100A, 2P, 600V, WITH 120V. COIL.
C	2	CIRCUIT BREAKER, MOLDED CASE, THERMAL MAGNETIC, 1-POLE, 15A, 277V, BOLT-ON TYPE WITH AN INTERRUPTING RATING OF NOT LESS THAN 14,000 RMS SYMMETRICAL AMPERES AT 277V.
D	1	SURGE ARRESTOR, FOR 240/120V, 3 WIRE SERVICE
E	1	PHOTOCELL, 120 V, 1 PHASE
F	2	TIMECLOCK, 120V, 60 HZ, MICROPROCESSOR BASED 2-CHANNEL CONTROLLER WITH ASTRONOMIC FUNCTIONS, RATED FOR -30% C.
G	2	GROUND/NEUTRAL BUS, COPPER, 22 CONNECTORS, (MIN.)
H1	6	CIRCUIT BREAKER, MOLDED CASE, THERMAL MAGNETIC, 2-POLE, 30A, 277V, BOLT-ON TYPE WITH AN INTERRUPTING RATING OF NOT LESS THAN 14,000 RMS SYMMETRICAL AMPERES AT 277V.
H2	12	CIRCUIT BREAKER, MOLDED CASE, THERMAL MAGNETIC, 1-POLE, 30A, 277V, BOLT-ON TYPE WITH AN INTERRUPTING RATING OF NOT LESS THAN 14,000 RMS SYMMETRICAL AMPERES AT 277V.
I	1	RECEPTACLE, 120V, 20A PREMIUM SPEC. GRADE, NEMA REFERENCE 5-15R IN WEATHER PROOF BOX WITH FLAP-TYPE COVER, (NEC 406.8B.2.c)
J	1	MICRO SWITCH (MOUNTED WITH ACTUATOR TO SWITCH WHEN DOOR OPENED)
K	1	120 V LIGHT FIXTURE, VAPORTIGHT, WITH GLOBE AND GUARD AND MOUNTING BOX.
L	2	RELAY, 120V - COIL
M	2	MANUAL-OFF-AUTO 3 POSITION SWITCH
N	1	METER FITTING, 200A
O	1	SPLICE BLOCK

PHOTOCELL MOUNTED IN CABINET OVERHANG

- NOTES**
- THE CABINET SHALL BE FABRICATED FROM 0.125" THICK ALUMINUM ALLOY SHEET AND SHALL BE REINFORCED WITH ALUMINUM ANGLES. THE CABINET DOOR SHALL BE NEMA TYPE 3R CONSTRUCTION WITH NEOPRENE GASKET. THE DOOR SHALL HAVE STAINLESS STEEL HINGES AND THREE POINT LOCKING SYSTEM.
 - THE CONTRACTOR SHALL REMOVE VEGETATION AND TOPSOIL. LEVEL THE AREA IN FRONT OF THE CONTROL CABINET DOOR AND PLACE LENGTH WISE, PARALLEL TO CONTROL CABINET. A PRECAST PAD, 48"x48"x4" MINIMUM SIZE. THE COST OF LABOR AND MATERIALS SHALL BE INCIDENTAL TO THE CONTROL CABINET.
 - CONTROL WIRE SHALL BE #12 AWG, 600V, TYPE "MTW" STRANDED COPPER GRAY SWITCH BOARD WIRE. THE ENDS OF ALL CONTROL WIRES SHALL BE IDENTIFIED.
 - THE ELECTRIC METER BOX SHALL BE MOUNTED ON THE SIDE OF THE CONTROL CABINET, NEAR TO THE SERVICE POLE AND/OR AS DIRECTED BY THE ENGINEER.
 - ALL CONTROL CABINET ITEMS SHALL HAVE SUITABLE IDENTIFICATION. OPEN CIRCUIT BREAKERS, CONTACTORS AND OTHER OPEN DEVICES SHALL HAVE PERMANENT SELF STICKING TAGS. DEVICES IN ENCLOSURES SHALL HAVE ENGRAVED 2-COLOR LAMINATED PLASTIC NAMEPLATES ATTACHED TO ENCLOSURES WITH SCREWS. NAMEPLATES SHALL BE ENGRAVED TO CORRESPOND TO DESIGNATIONS ON THE DRAWINGS. INTERNAL CABINET WIRING SHALL BE IDENTIFIED AS INDICATED OR AS DIRECTED BY THE ENGINEER BY MEANS OF SELF-STICKING TAGS APPLIED AT EACH CONNECTED END. IDENTIFICATION SHALL BE MADE BY THE CABINET MANUFACTURER.
 - ALL WIRING WITHIN THE CABINET SHALL BE COLOR CODED AS INDICATED.
R = RED BL = BLUE W = WHITE
B = BLACK Y = YELLOW G = GREEN
 - PROVIDE SEALING GROMMETS FOR ALL OPEN WIRING EXTENDED FROM DEVICES IN BOXES OR CABINETS WITHIN THE CONTROL CABINET.
 - THE CABINET SHALL BE PRIMED AND PAINTED AS SPECIFIED. THE OUTSIDE SURFACE OF THE CONTROL CABINET SHALL HAVE A BLACK COLOR FINISH.
 - THE HEADS OF CONNECTOR SCREWS SHALL BE PAINTED WHITE FOR NEUTRAL BUSS CONNECTION AND GREEN FOR GROUND BUSS CONNECTORS.
 - ALL WIRING SHALL BE NEATLY DRESSED AND SUPPORTED.
 - THE CONTROLLER SHALL BE CONSTRUCTED TO U.L. STD. 508 AND BEAR THE U.L. LABEL "ENCLOSED INDUSTRIAL CONTROL PANEL".
 - PROVIDE A HOLDER AND WATERPROOF POUCH ON THE INNER SIDE OF THE CONTROLLER DOOR. THE HOLDER AND POUCH SHALL BE MOUNTED SO THAT RAIN WATER OR CONDENSED WATER CANNOT ENTER THE POUCH WITH THE CABINET DOOR OPEN. FURNISH A LAMINATED THE APPROVED COPY OF THE "CONTROL CABINET WIRING DIAGRAM".
 - THE CONTRACTOR SHALL OBTAIN ANCHOR BOLTS LOCATION TEMPLATE FROM THE FABRICATOR OF LIGHTING CONTROLLER
 - THE CONTROLLER FABRICATION SHALL COMPLY TO ARTICLE 1068.01 OF THE STANDARD SPECIFICATIONS
 - THE CONTROLLER CABINET DOOR SHOULD OPEN AWAY FROM THE STREET
 - THE SERVICE EQUIPMENT SHALL HAVE U.L. LABEL AND SHALL BE MARKED TO IDENTIFY IT AS BEING SUITABLE FOR USE AS SERVICE EQUIPMENT (NEC ARTICLE 230.66)

THIS DRAWING IS THE EXCLUSIVE PROPERTY OF SUNJOY INC. AND IS PROVIDED ONLY FOR THE PROJECT LISTED ON THIS DRAWING. THIS DRAWING SHALL NOT BE DUPLICATED, USED OR DISCLOSED, IN WHOLE OR IN PART, FOR ANY PURPOSE WHATSOEVER WITHOUT THE WRITTEN PERMISSION OF SUNJOY INC.

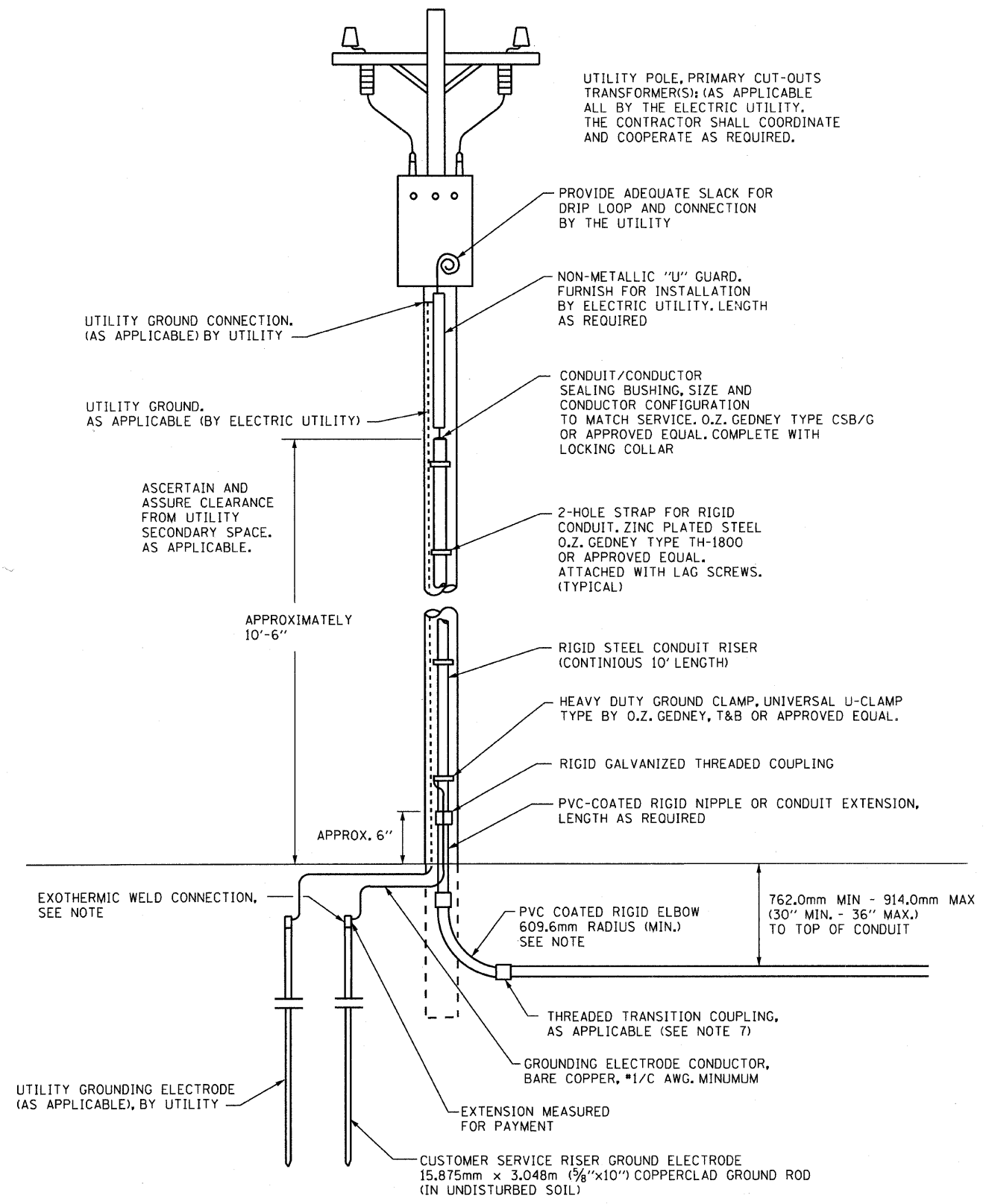
DETAILS FROM EXCEL LTD - (847) 543-9138

REVISIONS	
NAME	DATE

ILLINOIS DEPARTMENT OF TRANSPORTATION
CITY OF BRAIDWOOD, WILL COUNTY
ILLINOIS ROUTE 113 (MAIN STREET)
ORNAMENTAL LIGHTING IMPROVEMENT
LIGHTING CONTROLLER, SPECIAL

SCALE: NTS
DATE: 10-15-09
DRAWN BY: HKO
CHECKED BY: JS

REVISED 11-22-09



UTILITY POLE, PRIMARY CUT-OUTS TRANSFORMER(S); (AS APPLICABLE ALL BY THE ELECTRIC UTILITY. THE CONTRACTOR SHALL COORDINATE AND COOPERATE AS REQUIRED.

PROVIDE ADEQUATE SLACK FOR DRIP LOOP AND CONNECTION BY THE UTILITY

NON-METALLIC "U" GUARD. FURNISH FOR INSTALLATION BY ELECTRIC UTILITY. LENGTH AS REQUIRED

UTILITY GROUND CONNECTION. (AS APPLICABLE) BY UTILITY

UTILITY GROUND. AS APPLICABLE (BY ELECTRIC UTILITY)

CONDUIT/CONDUCTOR SEALING BUSHING, SIZE AND CONDUCTOR CONFIGURATION TO MATCH SERVICE. O.Z. GEDNEY TYPE CSB/G OR APPROVED EQUAL. COMPLETE WITH LOCKING COLLAR

ASCERTAIN AND ASSURE CLEARANCE FROM UTILITY SECONDARY SPACE. AS APPLICABLE.

2-HOLE STRAP FOR RIGID CONDUIT. ZINC PLATED STEEL O.Z. GEDNEY TYPE TH-1800 OR APPROVED EQUAL. ATTACHED WITH LAG SCREWS. (TYPICAL)

APPROXIMATELY 10'-6"

RIGID STEEL CONDUIT RISER (CONTINUOUS 10' LENGTH)

HEAVY DUTY GROUND CLAMP, UNIVERSAL U-CLAMP TYPE BY O.Z. GEDNEY, T&B OR APPROVED EQUAL.

RIGID GALVANIZED THREADED COUPLING

PVC-COATED RIGID NIPPLE OR CONDUIT EXTENSION, LENGTH AS REQUIRED

APPROX. 6"

EXOTHERMIC WELD CONNECTION, SEE NOTE

PVC COATED RIGID ELBOW 609.6mm RADIUS (MIN.) SEE NOTE

762.0mm MIN - 914.0mm MAX (30" MIN. - 36" MAX.) TO TOP OF CONDUIT

THREADED TRANSITION COUPLING, AS APPLICABLE (SEE NOTE 7)

GROUNDING ELECTRODE CONDUCTOR, BARE COPPER, #1/C AWG. MINIMUM

UTILITY GROUNDING ELECTRODE (AS APPLICABLE), BY UTILITY

EXTENSION MEASURED FOR PAYMENT

CUSTOMER SERVICE RISER GROUND ELECTRODE 15.875mm x 3.048m (5/8"x10") COPPERCLAD GROUND ROD (IN UNDISTURBED SOIL)

**PROPOSED SERVICE INSTALLATION
POLE TOP MOUNTED TRANSFORMER**

NOTES:

- SERVICE VOLTAGE SHALL BE AS INDICATED ELSEWHERE IN THE DRAWINGS.
- UNLESS OTHERWISE INDICATED, ITEMS AND WORK SHALL BE INCLUDED AND PAID AS PART OF ELECTRIC UTILITY SERVICE INSTALLATION.
- CONDUIT AND CONNECTOR DIAMETER SHALL MATCH THE DIAMETER OF SERVICE CONDUCTOR RACEWAY AS INDICATED.
- PVC COATED RACEWAY AND ACCESSORIES SHALL BE CAREFULLY INSTALLED WITH MFR RECOMMENDED TOOLS AND PROCEDURES TO AVOID DAMAGE. ANY DAMAGE SHALL BE REPAIRED WITH COMPATIBLE PVC TOUCH-UP MATERIAL TO THE SATISFACTION OF THE ENGINEER OR THE DAMAGED MATERIAL SHALL BE REPLACED AT NO ADDITIONAL COST.
- THE CONTRACTOR SHALL OBTAIN INSPECTION AND APPROVAL BY THE ENGINEER OF SERVICE RISER GROUND ELECTRODE, RISER ELBOW, NIPPLE AND CONNECTION TO SERVICE CONDUCTOR RACEWAY EXTENSION BEFORE BACKFILL AND SHALL ALSO OBTAIN INSPECTION OF SERVICE RISER AND SEALING BUSHING BEFORE UTILITY 1/32" U" 3/32" GUARD INSTALLATION AND SERVICE CONNECTION.
- THE SERVICE METER SOCKET, AS APPLICABLE, MOUNTED ELSEWHERE AS INDICATED SHALL BE INCLUDED AND PAID AS PART OF THE ELECTRICAL UTILITY SERVICE INSTALLATION PAY ITEM.
- THE SERVICE CONDUCTOR RACEWAY SHALL BE AS INDICATED AND SHALL BE MEASURED SEPARATELY FOR PAYMENT. WHEN THE RACEWAY IS PVC-COATED RIGID GALVANIZED STEEL, THE COUPLING SHALL BE THE SAME. WHEN THE RACEWAY IS PVC CONDUIT (IN CONCRETE), THE COUPLING SHALL BE A METALLIC TO NON METALLIC ADAPTER. WHEN THE RACEWAY IS ENCASED IN CONCRETE, THE CONCRETE SHALL EXTEND TO COVER THE COUPLING.
- PLANS AND DETAILS INDICATE THE GENERAL NATURE AND REQUIREMENTS. THEY DO NOT SHOW EVERY ACCESSORY AND ATTACHMENT, AND THEY DO NOT RELIEVE THE CONTRACTOR OF THE REQUIREMENTS OF THE SPECIFICATIONS AND SPECIAL PROVISIONS TO ASCERTAIN UTILITY REQUIREMENTS AND TO COORDINATE ACCORDINGLY. FURNISHING ALL ITEMS AND WORK NOT PROVIDED BY THIS UTILITY, BUT NECESSARY FOR A COMPLETE SERVICE INSTALLATION.



SFILES
SDATES

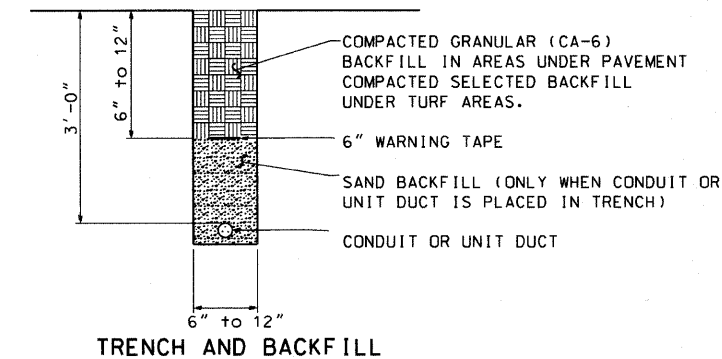
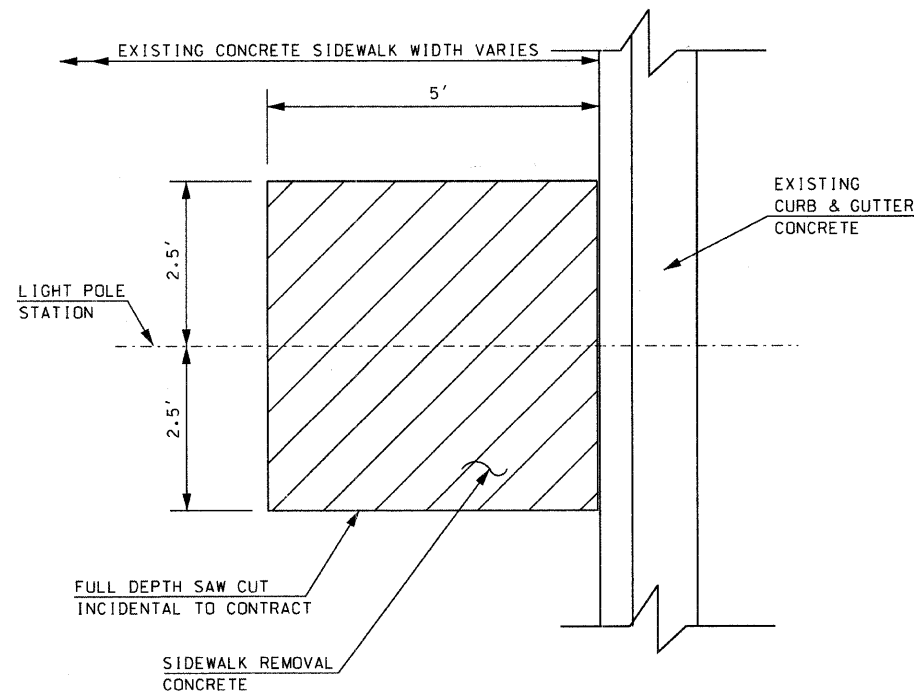
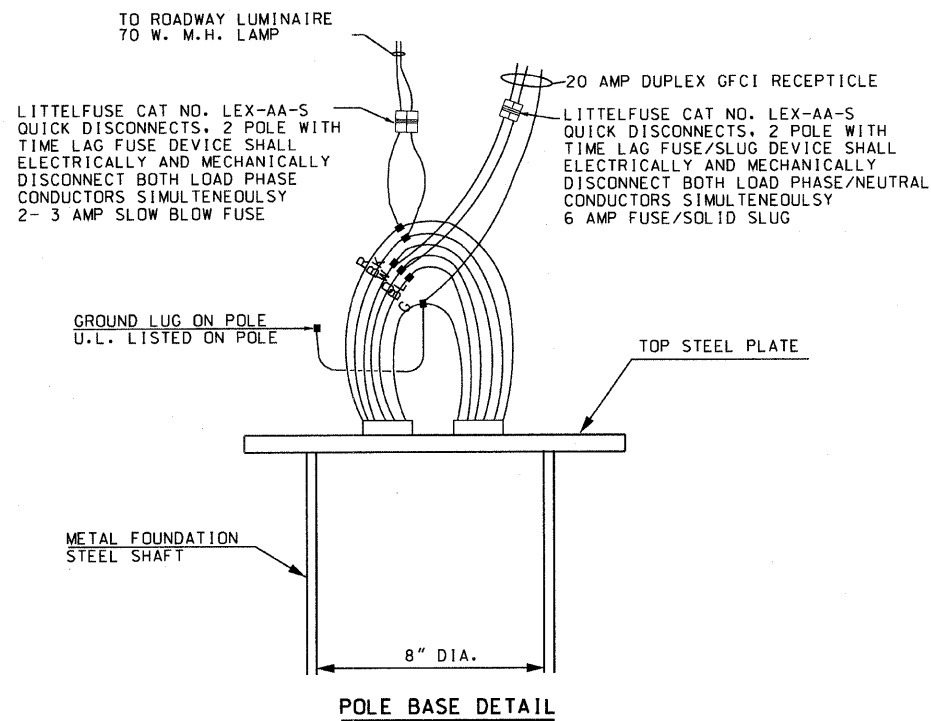
Sunjoy Inc.
Area Lighting
Consulting Engineers
212 TIMBERCREST DRIVE
SCHAUMBURG, ILLINOIS
60193-1572

REVISIONS	
NAME	DATE

ILLINOIS DEPARTMENT OF TRANSPORTATION
CITY OF BRAIDWOOD, WILL COUNTY BE-220
ILLINOIS ROUTE 113 (MAIN STREET)
ORNAMENTAL LIGHTING IMPROVEMENT
**ELECTRIC SERVICE INSTALLATION
POLE TOP MOUNTED TRANSFORMER**

SCALE: NONE
DATE: 10-15-09
DRAWN BY: HKQ
CHECKED BY: JS

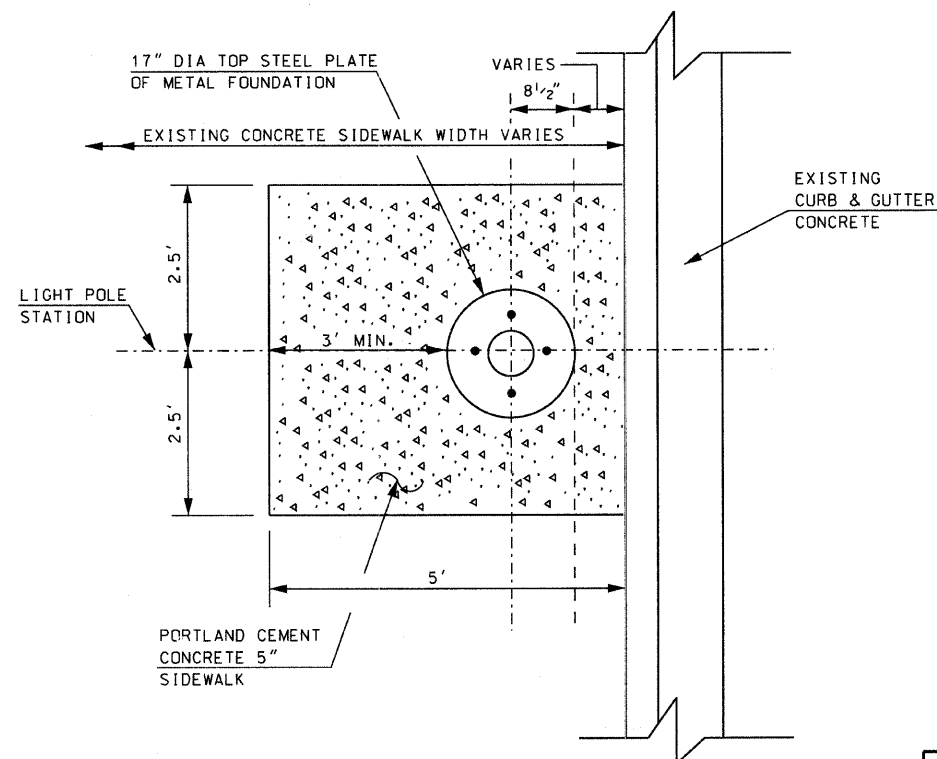
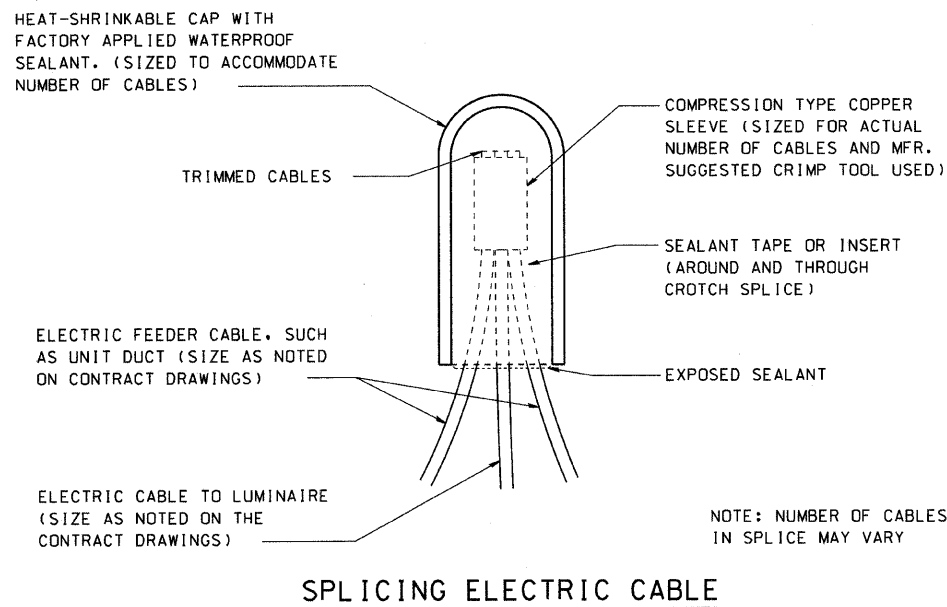
REVISED 11-22-09



SAW CUT SIDEWALK REMOVAL DETAILS

SAW CUT AND SIDEWALK REMOVAL AT THE FOLLOWING STATIONS

PLAN SHEET #E-5	9+30 (RT), 10+05 (RT), 10+80 (RT), 11+55 (RT), 12+45 (LT & RT), 13+30 (LT & RT), 14+15 (LT & RT), 15+05 (LT & RT), 15+95 (LT & RT), 16+85 (LT & RT)
PLAN SHEET #E-6	17+75 (LT & RT), 18+65 (LT & RT), 19+50 (LT & RT), 20+35 (LT & RT), 21+20 (LT & RT), 21+90 (LT & RT), 22+75 (LT & RT), 23+60 (LT & RT), 24+50 (RT)



METAL FOUNDATION LOCATION AND PORTLAND CEMENT CONCRETE SIDEWALK DETAILS

REVISED 11-22-09

Sunjoy Inc.
Area Lighting
Consulting Engineers
212 TIMBERCREST DRIVE
SCHAUMBURG, ILLINOIS
60193-1572

THIS DRAWING IS THE EXCLUSIVE PROPERTY OF SUNJOY INC. AND IS PROVIDED ONLY FOR THE PROJECT LISTED ON THIS DRAWING. THIS DRAWING SHALL NOT BE DUPLICATED, USED OR DISCLOSED, IN WHOLE OR IN PART, FOR ANY PURPOSE WHATSOEVER WITHOUT THE WRITTEN PERMISSION OF SUNJOY INC.

REVISIONS	
NAME	DATE

ILLINOIS DEPARTMENT OF TRANSPORTATION
CITY OF BRAIDWOOD, WILL COUNTY
ILLINOIS ROUTE 113 (MAIN STREET)
ORNAMENTAL LIGHTING IMPROVEMENT

ELECTRICAL DETAILS

SCALE: NTS
DATE: 10-15-09

DRAWN BY: HKQ
CHECKED BY: JS

