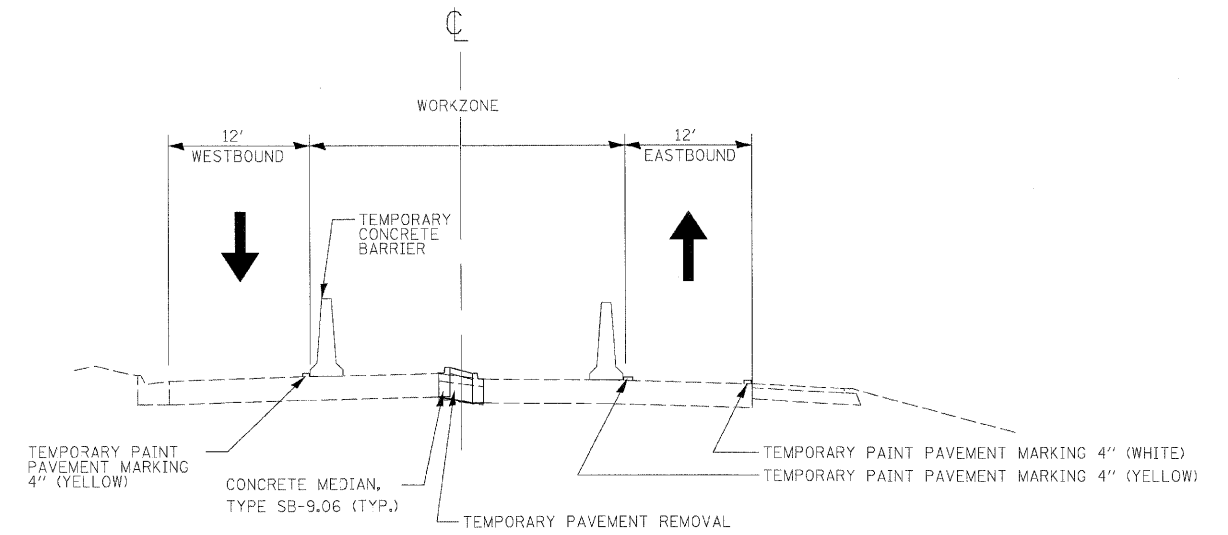
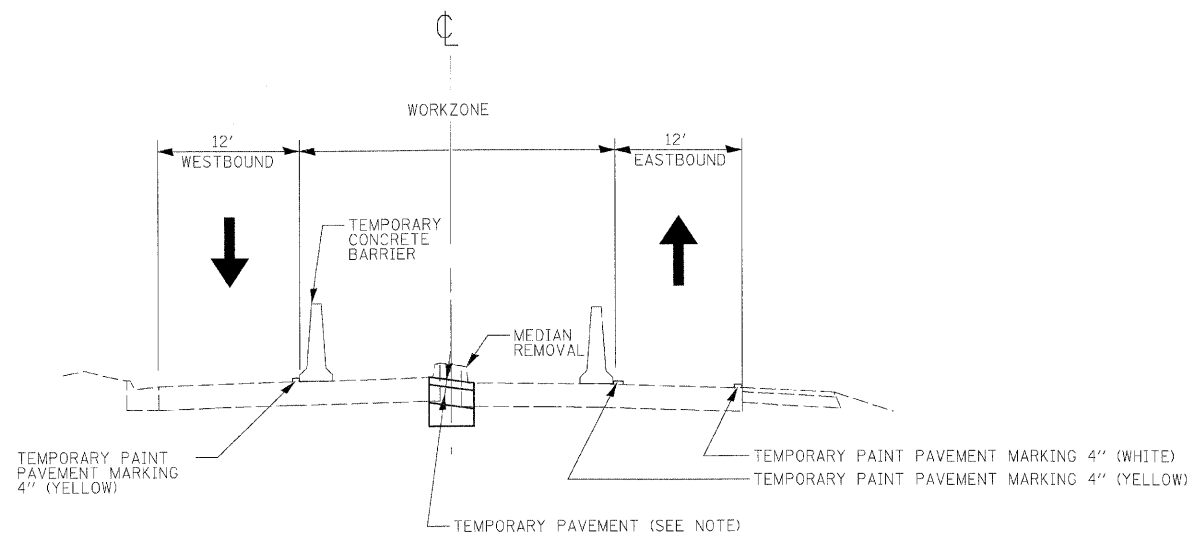


STAGE 1 TYPICAL SECTION
STA. 76+28 to STA. 115+05



STAGE 5 TYPICAL SECTION
STA. 76+28 to STA. 133+55



STAGE 2 TYPICAL SECTION
STA. 76+28 to STA. 133+55

NOTE:

TEMPORARY PAVEMENT WILL CONSIST OF HOT-MIX ASPHALT SURFACE COURSE, MIX "C", N50, 6" AND AGGREGATE BASE COURSE, TYPE B, 12"

FILE NAME =	USER NAME = #USER#	DESIGNED: KAC	REVISED -
G:\ENG\06-6798-13_TASK7\C:\Sh\NIT64C68.S	HT007_MOTtypical_Stage1.2.5.dgn	DRAWN BY: CKL/TMF	REVISED -
	PLOT SCALE = #SCALE#	CHECKED BY: KAC	REVISED -
	PLOT DATE = 12/1/2009	DATE: 11/13/2009	REVISED -

STATE OF ILLINOIS
DEPARTMENT OF TRANSPORTATION

MOT STAGE TYPICAL SECTIONS		
SCALE: N.T.S.	SHEET NO. 18 OF 80 SHEETS	STA. 99+27 TO STA. 114+33

F.A.P. RTE.	SECTION	COUNTY	TOTAL SHEETS	SHEET NO.
301	43T&M	JODAVIESS	80	18
FED. ROAD DIST. NO. ILLINOIS FED. AID PROJECT			CONTRACT NO. 64C68	