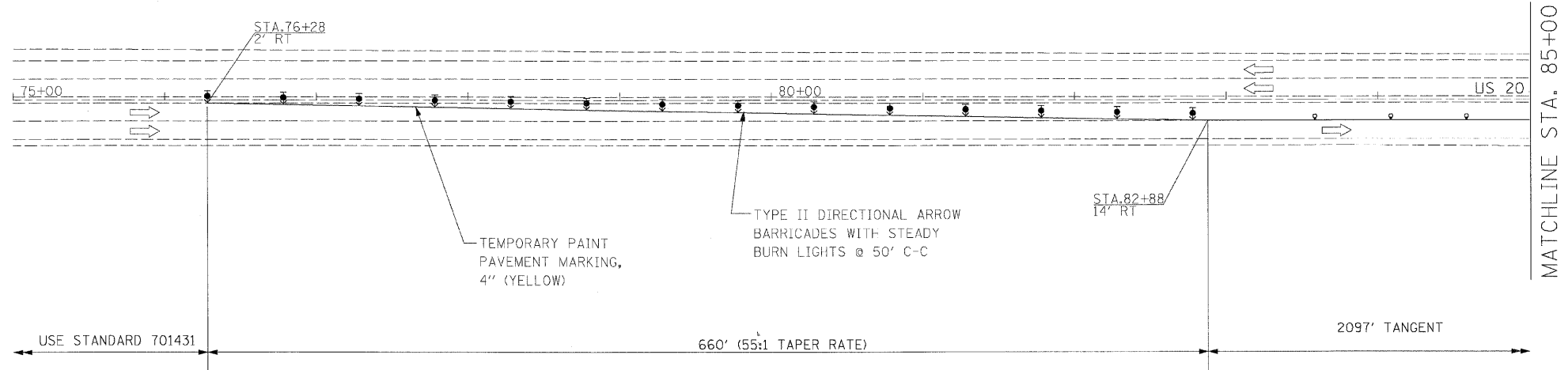
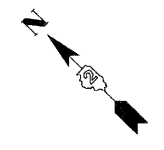


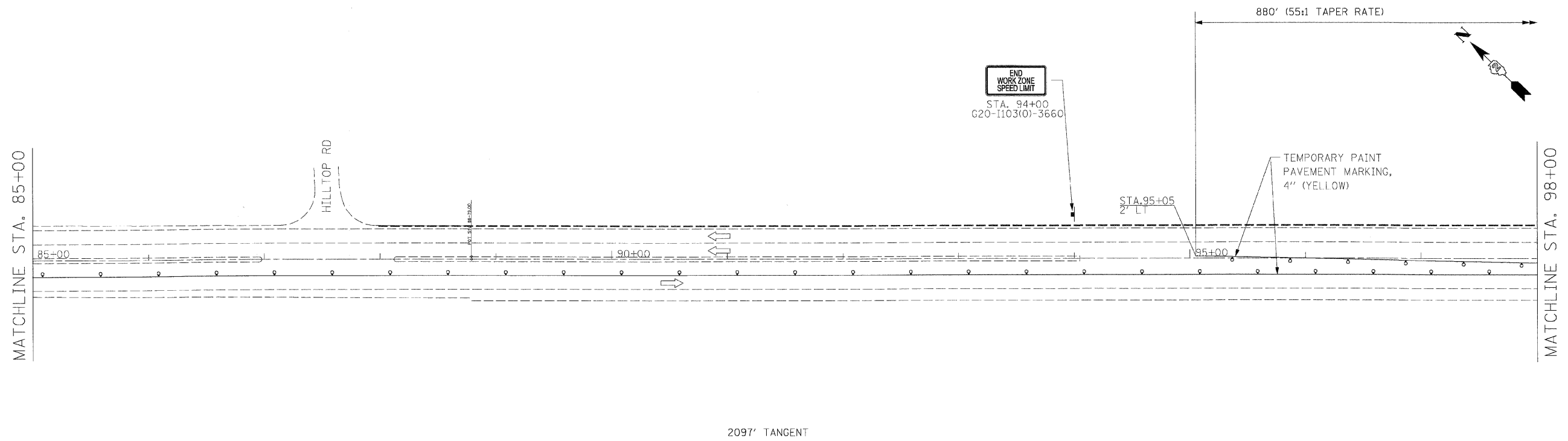
**NOTES:**

1. SETUP TRAFFIC CONTROL AND PROTECTION ACCORDING TO STANDARD 701431. SEE STANDARD FOR ADDITIONAL SIGNS AND DEVICES. SHIFT WB TRAFFIC ONTO THE INSIDE AND PART OF THE OUTSIDE EB LANES AND SHIFT EB TRAFFIC ONTO PART OF THE OUTSIDE EB LANE AND THE SHOULDER CONSTRUCTED IN STAGE 1.
2. REMOVE PAVEMENT, HOT-MIX ASPHALT SURFACE REMOVAL, GUARDRAIL, CURB & GUTTER, AND CATCH BASIN AS SHOWN ON PLANS.
3. REMOVE NORTH SECTION OF EXISTING CULVERT; REFER TO STRUCTURAL PLANS.
4. CONSTRUCT NEW BOX CULVERT, END SECTION, CATCH BASIN, STORM SEWER PIPE, AND BACKFILL.
5. CONSTRUCT PCC CURB & GUTTER AND CLASS B PATCHES.

# STAGE 3



**SYMBOLS:**  
 HOT-MIX ASPHALT SURFACE REMOVAL



**SYMBOLS:**  
 HOT-MIX ASPHALT SURFACE REMOVAL

FILE NAME = G:\ENGL\26-8790-13_TASK7\CIV\SH\DI\64C68_SHT003_PROP_stage3.dgn	USER NAME = #USER#	DESIGNED - KAC	REVISED -	<b>STATE OF ILLINOIS DEPARTMENT OF TRANSPORTATION</b>	<b>STAGING PLANS (STAGE 3)</b>			F.A.P. RTE. 301	SECTION 43T & M	COUNTY Jo Daviess	TOTAL SHEETS 80	SHEET NO. 25
	PLOT SCALE = #SCALE#	CHECKED - KAC	REVISED -		SCALE: 1" = 50'	SHEET NO. 25 OF 80 SHEETS	STA. 99+27 TO STA. 114+33	CONTRACT NO. 64C68				
	PLOT DATE = 12/1/2009	DATE - 11/13/2009	REVISED -		ILLINOIS FED. AID PROJECT							