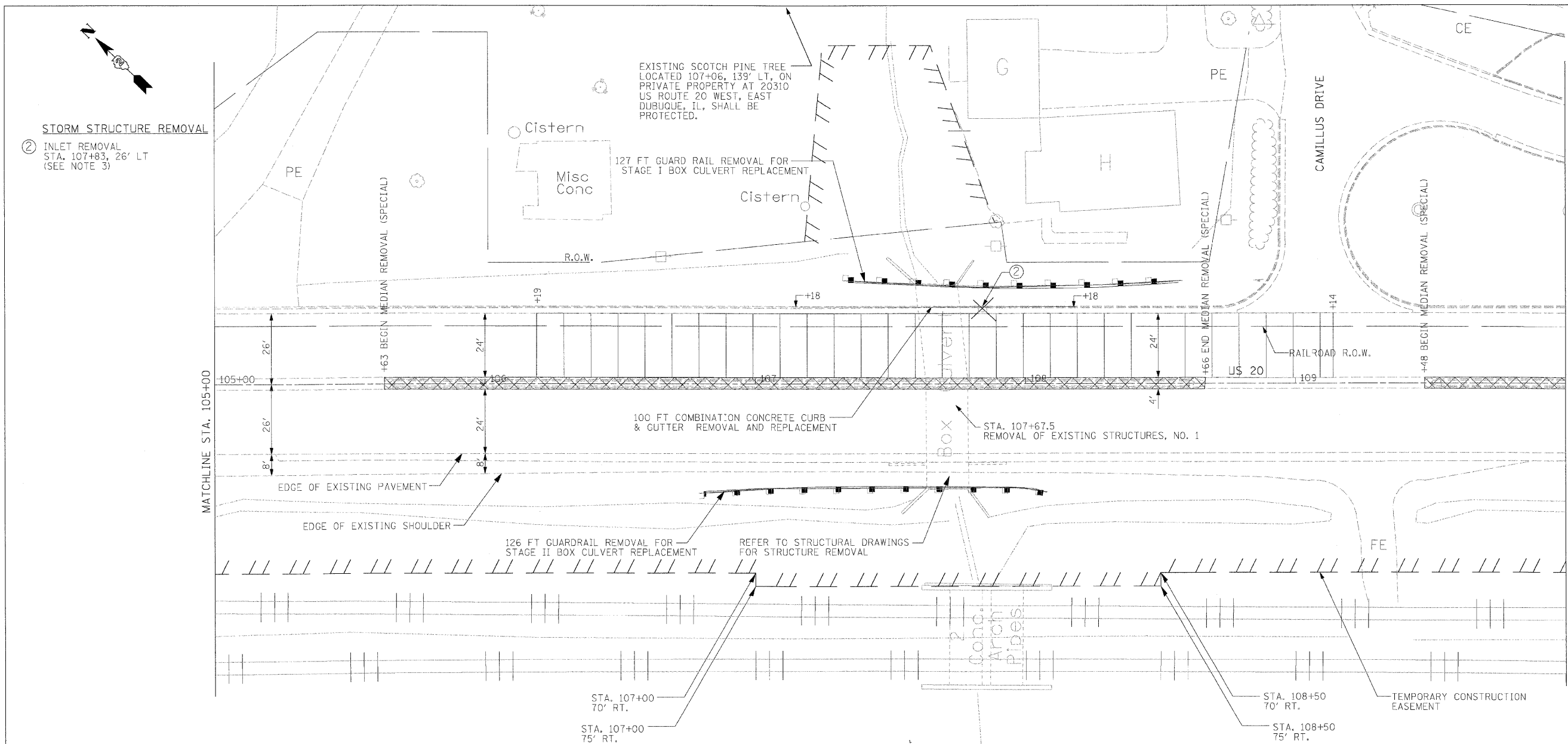


F.A.P. RTE.	SECTION	COUNTY	TOTAL SHEETS	SHEET NO.
301	43T&M	JoDaviess	80	35
STA. 99+27		TO STA. 114+33		
FED. ROAD DIST. NO.		ILLINOIS FED. AID PROJECT		

PLAN	DATE	BY

PROFILE	DATE	BY

PLOT DATE = 12/1/2009
 FILE NAME = G:\ENR\65-6790-13_1\ASK7\G:\S\1\0184668.S\1102_existing.dwg
 PLOT SCALE = 1/8"=1'-0"
 USER NAME = USER8



LEGEND

- REMOVAL ITEM
- MEDIAN REMOVAL (SPECIAL)
- HOT-MIX ASPHALT SURFACE REMOVAL, SPECIAL

NOTE

- A PROPOSED PERMANENT EASEMENT SHALL BE LOCATED 1 FOOT SOUTH OF THE OUTSIDE EDGE OF THE EASTBOUND 8-FOOT BITUMINOUS SHOULDER FROM STA. 99+27 TO STA. 114+20. THIS IS REQUIRED FOR THE MAINTENANCE OF THE PROPOSED WIDENING OF EASTBOUND U.S. 20 TO ACCOMMODATE THE ADDITIONAL LEFT-TURN LANE OF CAMILLUS DRIVE.
- FROM STA. 99+00 TO STA. 110+45.20 THE BASE LINE IS LOCATED ALONG THE U.S. 20. CENTERLINE. FROM STA. 110+45.20 TO STA. 115+00.00 THE BASE LINE IS LOCATED 13.9 FEET SOUTHWEST AND PARALLEL TO THE U.S. 20 CENTERLINE.
- REMOVAL OF INLET & 12" DIA. STORM SEWER AT STA. 107+83, 26' LT SHALL BOTH BE INCLUDED IN THE COST OF INLET REMOVAL.
- PAVEMENT REMOVAL FOR THE CONSTRUCTION OF THE BOX CULVERT SHALL NOT BE PAID FOR SEPARATELY, BUT SHALL BE INCLUDED IN THE COST OF CLASS B PATCHES.



USER NAME = #USER#	DESIGNED KAC	REVISED -	STATE OF ILLINOIS DEPARTMENT OF TRANSPORTATION	US-20 /CAMILLUS DRIVE EXISTING PLAN & PROFILE		F.A.P. RTE. 301	SECTION 43T&M	COUNTY JODAVIESS	TOTAL SHEETS 80	SHEET NO. 35	
PI OT SCALE = #SCALE#	DRAWN BY: CKL/TMF	REVISED -		SCALE: 1" = 20'	SHEET NO. 35 OF 80 SHEETS	STA. 99+27 TO STA. 114+33	CONTRACT NO. 64C68				
PLOT DATE = 12/1/2009	CHECKED BY: KAC	REVISED -		FED. ROAD DIST. NO. ILLINOIS FED. AID PROJECT							
	DATE: 11/13/2009	REVISED -									