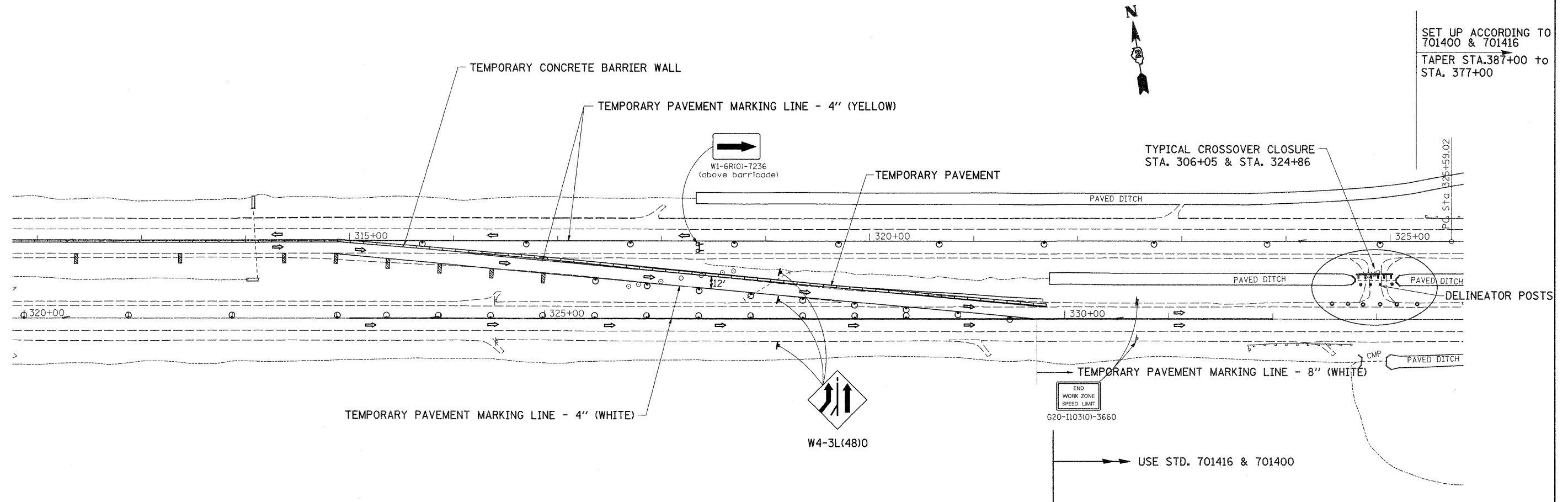


# EXISTING EAST CROSSOVER STAGE I



### STAGING NOTES:

1. USE STANDARD 701400 & 701416 WHEN UTILIZING CROSSOVER.
2. CONSTRUCT ADDITIONAL 3' OF TEMPORARY PAVEMENT ALONG THE NORTH SIDE OF CROSSOVER FOR THE BARRIER WALL TO SIT ON.
2. PRIOR TO APPLYING TEMPORARY PAVEMENT MARKING THE EXISTING CROSSOVER MUST BE CLEANED OF ANY DEBRIS AND EXISTING MEDIAN CROSS OVER CLOSURE TO BE REMOVED. (THIS IS INCLUDED IN THE COST OF TRAFFIC CONTROL STD. 701416.)
2. APPLY TEMPORARY PAVEMENT MARKING LINE 4"
3. SETUP TEMPORARY CONCRETE BARRIER WALL @ C OF WESTBOUND LANES INCLUDING ALL TAPERS.
4. ANY CONFLICTING INLAID PAVEMENT MARKING SHALL BE COVERED WITH BLACKOUT TAPE, COST WILL BE INCLUDED IN TRAFFIC CONTROL STANDARD 701416.
5. INSTALL TEMPORARY LIGHTING SYSTEM.
6. ONCE PROJECT IS COMPLETE INSTALL DISTRICT STD. TYPICAL MEDIAN CROSSOVER CLOSURE (98.4)

### SYMBOLS

- ↑ Arrow board
- ▨ Work area
- † Sign
- ↑ Direction indicator barricade with steady burn monodirectional light
- ↑ Type II barricade with steady burn monodirectional light
- Drum with steady burn monodirectional light
- ▨ Vertical Panel (back to back)
- ↑ Type III barricade with flashing lights
- Temporary concrete barrier
- ◇ Bidirectional barrier marker

FILE NAME =	USER NAME = cushmanbw	DESIGNED -	REVISED -	<b>STATE OF ILLINOIS DEPARTMENT OF TRANSPORTATION</b>	<b>EXISTING EAST CROSSOVER STAGE I</b>				F.A.P. RTE.	SECTION	COUNTY	TOTAL SHEETS	SHEET NO.
cs:\pwork\pwork\cushmanbw\d0117386\0242808-staging.dgn	2808-staging.dgn	DRAWN -	REVISED -						301	31T	JO DAVIESS	160	42
PLOT SCALE = 50.0000 / / IN.	CHECKED -	REVISED -	REVISED -		CONTRACT NO. 64D92								
PLOT DATE = Wed Dec 09 11:48:14 2009	DATE -	REVISED -	REVISED -		ILLINOIS FED. AID PROJECT								
					SCALE:	SHEET NO.	OF	SHEETS	STA.	TO	STA.		