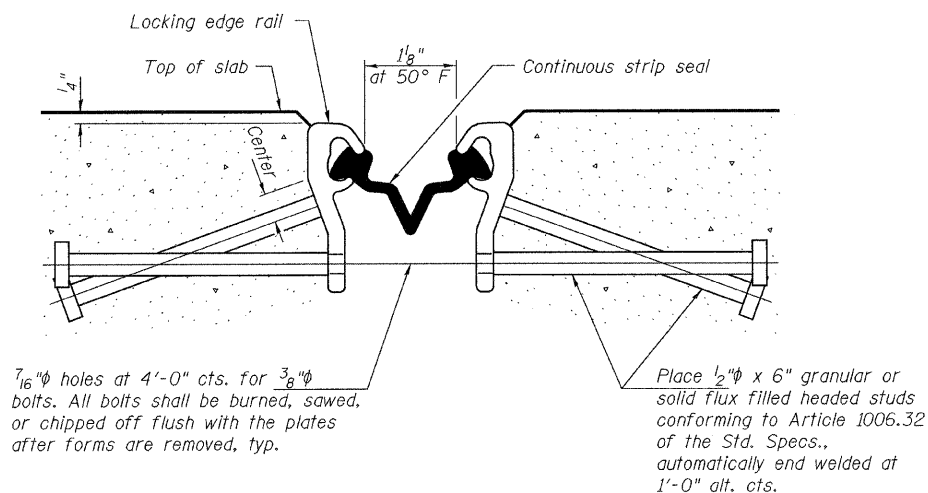


* Omit weld at seal opening.

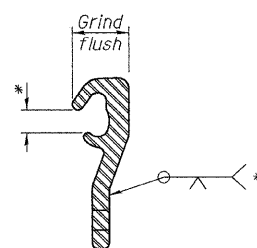
STATE OF ILLINOIS
DEPARTMENT OF TRANSPORTATION



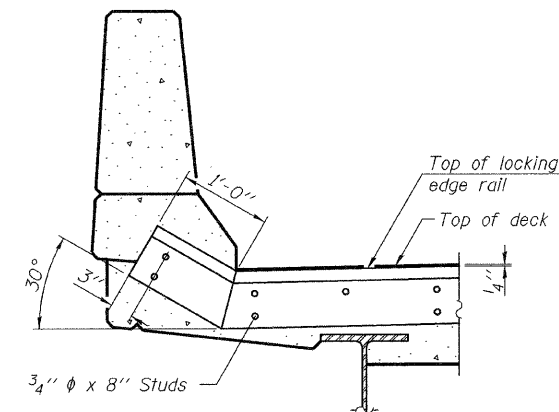
SECTION THRU STRIP SEAL JOINT
FOR OVERLAY OVER DECK BEAMS



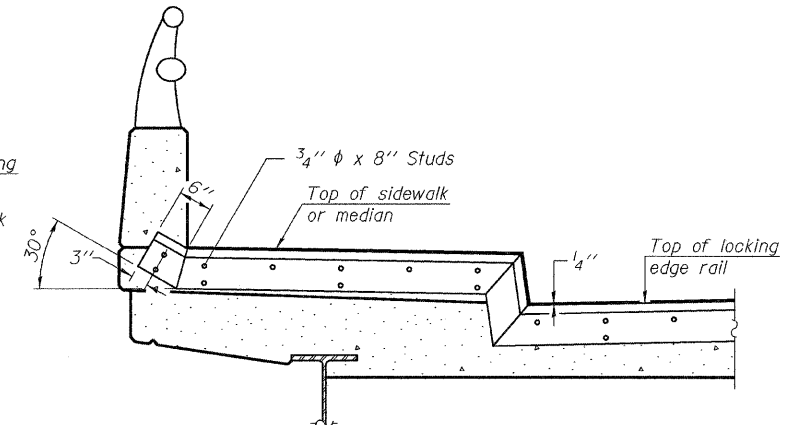
LOCKING EDGE RAIL



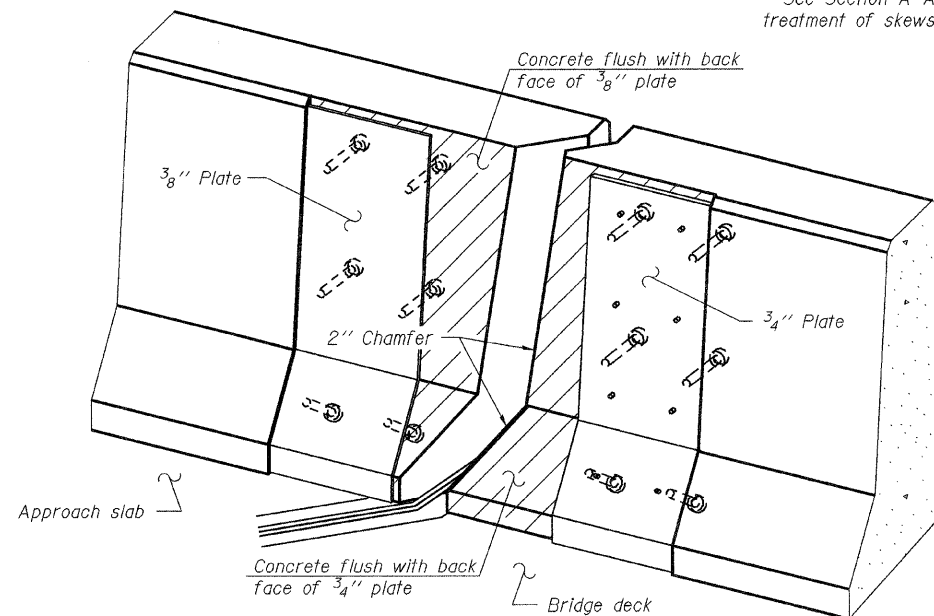
LOCKING EDGE RAIL SPLICE



AT PARAPET
See Section A-A for end treatment of skews > 30°.



AT SIDEWALK OR MEDIAN
Shorter plates with a single row of studs at 12" cts. may be necessary on medians which are shallower than 9". See manufacturer's recommendation.

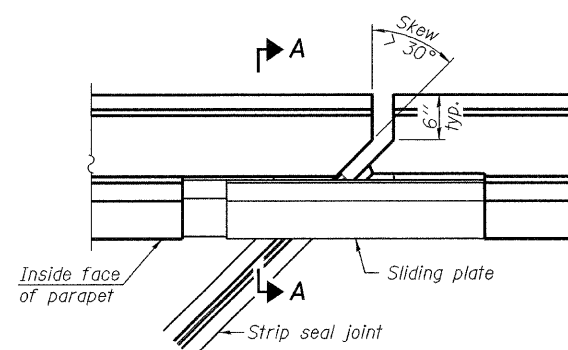


TYPICAL END TREATMENTS

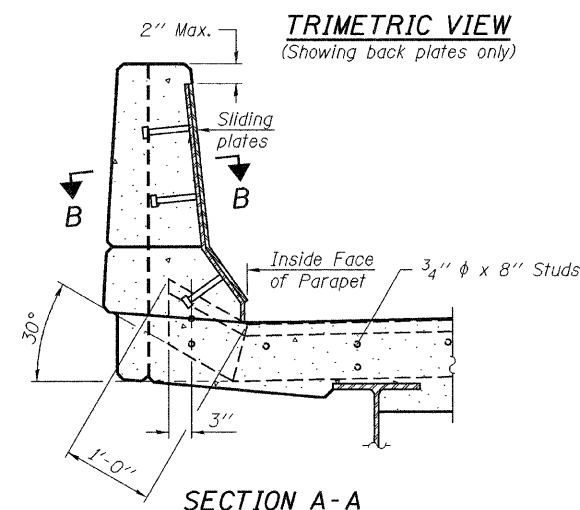
Notes:

The strip seal shall be made continuous and shall have a minimum thickness of 1/4". The configuration of the strip seal shall match the configuration of the Locking Edge Rails. Open or "webbed" strip seal gland configurations are not permitted. The gland shall be sized for a maximum rated movement of 4 inches. The Locking Edge Rails depicted are conceptual only, except for the minimum dimensions shown. The actual configuration of the Locking Edge Rails and matching strip seal may vary from manufacturer to manufacturer. Flanged edge rails will not be allowed. Locking Edge Rails may be spliced at slope discontinuities.

The manufacturer's recommended installation methods shall be followed. The joint opening and deck dimensions detailed on the superstructure are based on a rolled rail expansion joint. If the Contractor elects to use the welded rail expansion joint, the opening and deck dimensions shall be modified according to the dimensions detailed on this sheet. Required modifications shall be made at no additional cost to the State. All steel components shall be galvanized after fabrication according to Article 520.03 of the Standard Specifications. Maximum space between rail segments at stage lines shall be 3/16", sealed with a suitable sealant.



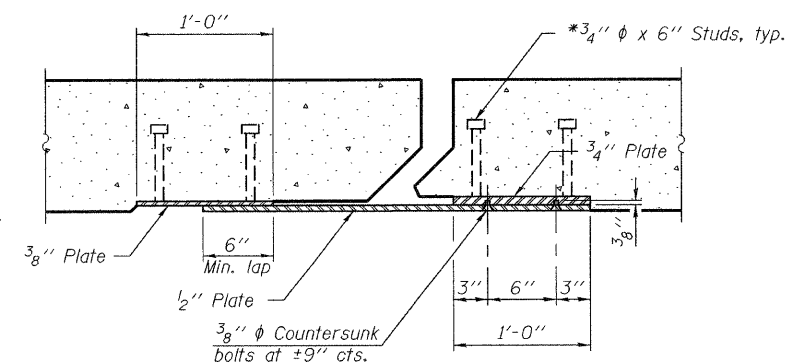
PLAN



TRIMETRIC VIEW
(Showing back plates only)

SECTION A-A

POINT BLOCK DETAILS
(for skews > 30°)



SECTION B-B

BILL OF MATERIAL

Item	Unit	Total
Preformed Joint Strip Seal	Foot	404

PREFORMED JOINT STRIP
SEAL DETAILS
SN 081-0038

DESIGNED	A.T.H.
CHECKED	I.J.L.
DRAWN	Drew Christopher
CHECKED	A.T.H. I.J.L.

January 8, 2009	
EXAMINED	<i>Carl P. [Signature]</i>
	ENGINEER OF STRUCTURAL SERVICES
PASSED	<i>Ralph E. Anderson</i>
	ENGINEER OF BRIDGES AND STRUCTURES

EJ-SSJ

11-1-09

SHEET NO.	F.A. RTE.	SECTION	COUNTY	TOTAL SHEETS	SHEET NO.
3	599	17(D)BR-M	Rock Island	11	10
4 SHEETS			CONTRACT NO.	64F94	
	FED. ROAD DIST. NO.	ILLINOIS	FED. AID PROJECT		